



MURRAY STATE
UNIVERSITY

Murray State's Digital Commons

Campus Lights

Digitized Collections

1940-02-23

Campus Lights 1940

Murray State College

Follow this and additional works at: <https://digitalcommons.murraystate.edu/campuslights>



Part of the [Acting Commons](#), and the [Music Performance Commons](#)

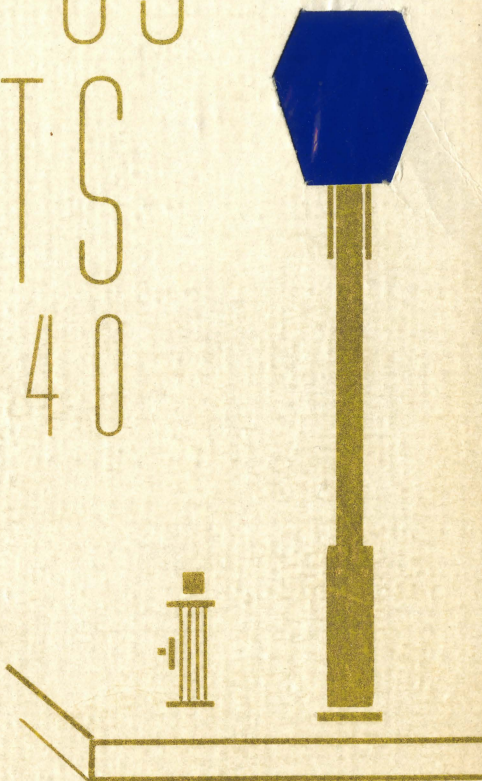
Recommended Citation

Murray State College, "Campus Lights 1940" (1940). *Campus Lights*. 4.
<https://digitalcommons.murraystate.edu/campuslights/4>

This Article is brought to you for free and open access by the Digitized Collections at Murray State's Digital Commons. It has been accepted for inclusion in Campus Lights by an authorized administrator of Murray State's Digital Commons. For more information, please contact msu.digitalcommons@murraystate.edu.

CAMPUS LIGHTS *of* 1940

Presented By
Gamma Delta Chapter
Phi Mu Alpha



CAMPUS LIGHTS

MURRAY STATE COLLEGE'S
THIRD MUSICAL REVUE

Friday, February 23rd

1940

COLLEGE AUDITORIUM



PRODUCTION STAFF

<i>Director-Conductor</i>	ARVED LARSEN
<i>Business Manager</i>	HARLAN K. INGLIS
<i>Assistant Business Manager</i>	WALTER NANCE
<i>Scenery</i>	ARTHUR COLAIANNI and JOHN SINGLETON
<i>Electricians</i>	WILLIAM SWYERS and JAMES STEVENS
<i>Costumes</i>	RUTH HEPBURN
<i>Dances</i>	MARCIA McEWEN FOX

To the Music Department of Murray State College
which is striving to teach the "Universal
Language"—Music, and to all who con-
tribute in any fashion to the dis-
semination of this art we
dedicate this space



Corn-Austin Co.

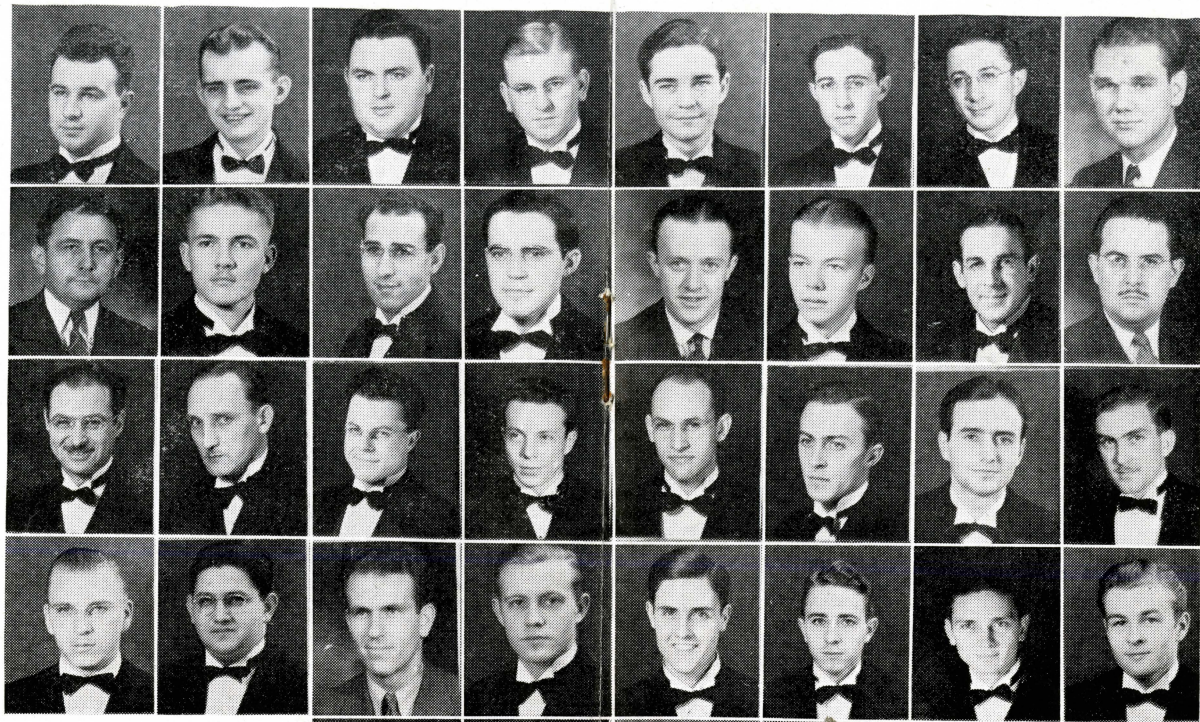
"Where Men Trade"

PROGRAM



1. Theme *Tschaikowsky*
2. Heat Wave.
3. Gone With The Wind
Art Colaizzi, Joe Fitch
4. Starlit Hour
5. Persian Market
6. Makin' a Dean
Joe Fitch, Billy Shelton
7. The Man I Love
Inez Phillips
8. Jiminy Cricket
9. Deep In Your Eyes *Paul Bryant*
Mary Anne Brandon
10. Photo Finish
Mary Ann Newman, Leo Lookofsky, Bob Smith
11. Dancing Feet
Jimmy Bagby
12. I Surrender, Dear
Eleanor Gatlin, Dot Currier, Inez Phillips
13. Sister Rats
Anne Berry, Dalene Bottom, Rex Inglis, James Rickman
14. As You Like It

Phi Mu
Alpha
Sinfonia
Fraternity
of America



Gamma
Delta
Chapter

First Row—
Sam Anderson
Guy Ashmore
Lynn Bartlow
Wayne Burdick
H. L. Carter
Art Colaianne
Gil Colaianne
Eldridge Cross

Second Row—
Price Doyle
Harry Davidson
Sanford Davis
Roy Davis
Jim Davis
Bill Dickinson
Wm. H. Fox
Joseph Garton

*Fifth Row—*John Singleton, Robert Stoddart, Elwood Swyers, William Swyers

Third Row—
Frank Gelber
Jack Herpy
Franklin P. Inglis
Rex Inglis
Fred Johnson
Watkin Jones
V. J. Kennedy
Arved Larsen

Fourth Row—
Steve Latanation
Leo Lookofsky
Clair R. McGavern
Walter Nance
Jack Prichard
Elmo Reed
James Rickman
William Shelton

*Pledges (Not in Picture)—*Robert Arnoldi, Jesse Darnell, Thomas Freeman, Harold Gilbert, Ted Haley, Shirley Mills, Joseph Udovic.

PROGRAM



15. Ave Maria Schubert
Fred Johnson
16. "The Picture" Jack Myer Kellman
Joe Fitch, Tom Blazier
17. I Must Have One More Kiss
18. Faculty Swing Quintet
*Bill Fox, Uncle Joe Garton, Mac McGavern, "Maest" Inglis,
Les Putnam*
19. Don't Make Me Laugh
Kathleen Winter
20. "The Men"—Series A
Art Colaianne, Joe Udovic, Bob Smith
21. Swinging In Siberia Paul Bryant
Paul Bryant
22. "The Men"—Series B
Art Colaianne, Joe Udovic, Bob Smith
23. It's A Wonderful World
"Joe" Burdick
24. Some Fauna
Joe Fitch, Walt Nance
25. How Sweet You Are Paul Bryant
Eleanor Gatlin, Dot Currier, Inez Phillips, "Joe" Burdick
26. Ballet
Martha Belle Hood, Billy Shelton

PROGRAM



27. Professor Dizz
Rex (Sport) Inglis, Walt Nance
28. Play, Fiddle, Play
Bill Fox
29. Too Hot To Handle
Art Colaianne, Mary Ann Newman
30. This Changing World
Thelma Marcum
31. On The Nose
Walt Nance, Eleanor Waidelis, Bob Smith
32. Deep In Your Eyes
Dot Currier, Kay Winter, Inez Phillips, Eleanor Gatlin
33. Soft At 60 (Or Social Security No. 2895467)
Sol Davis, Walt Nance, Art Colaianne, Bob Smith
34. Theme

Special Arrangements and Scoring By

*Paul Bryant, Morris Carter, Gilbert Colaianne, William H. Fox,
Bill Parrish, Bud Rubl*

*Dancers—Betty Burdick, Lucille Cap, Doris Church, Dixie Dexter,
Sue Farmer, Joyce Hill, Martha Belle Hood, Margaret Holland,
Nancy Jerman, Maddie Kohart, Martha Sue Key, Jane Lewis,
Mary Katherine McClellan, Lillian Meriweather, Marion Sharborough,
Jane Shultz.*

Acknowledgments to Helen Thornton and the Sock and Buskin Club for playlet "The Picture".

CAMPUS LIGHTS



*The campus lights come gleaming one by one
From out the dim recesses of our minds,
And each one lights a scene of yesterday,
A scene that really was, or might have been.
And in each scene we see ourselves go by.
We catch a glimpse of laughs, of sighs, of tears.
And e're this fleeting dream is gone, we fill
Our minds with memories that never die*

*Our vision fades. The campus lights grow dim.
Our hands reach out to grasp and hold each scene
That passes, never to return except
In fleeting dreams of cherished yesterdays.
Our days of laughs and sighs and tears are gone.
Guarded with jealous care through passing years
We keep a golden shrine of memory
Safe locked within a treasure-house of dreams.*

—EDWARD K. WEST.

Sock and Buskin Club presents "Mary Queen of Scots", March 22.

Sigma Alpha Iota and Sock and Buskin Club presents "The Vagabone King", May 3.