



MURRAY STATE
UNIVERSITY

Murray State's Digital Commons

Campus Lights

Digitized Collections

1945-12-01

Campus Lights 1945

Murray State College

Follow this and additional works at: <https://digitalcommons.murraystate.edu/campuslights>



Part of the [Acting Commons](#), and the [Music Performance Commons](#)

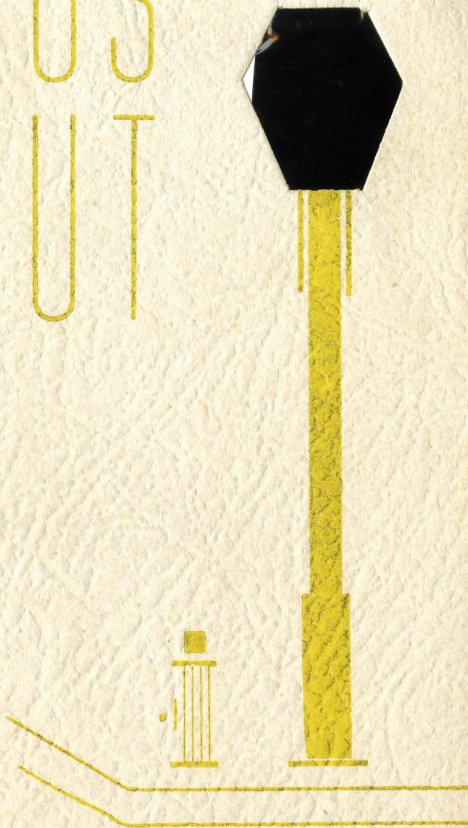
Recommended Citation

Murray State College, "Campus Lights 1945" (1945). *Campus Lights*. 9.
<https://digitalcommons.murraystate.edu/campuslights/9>

This Article is brought to you for free and open access by the Digitized Collections at Murray State's Digital Commons. It has been accepted for inclusion in Campus Lights by an authorized administrator of Murray State's Digital Commons. For more information, please contact msu.digitalcommons@murraystate.edu.

CAMPUS
DIMOUT
of 1945

Presented By
Iota Beta Chapter
Sigma Alpha Iota



CAMPUS DIMOUT

MURRAY STATE COLLEGE'S

EIGHTH MUSICAL REVUE

Friday, December 1

Saturday, December 2

1944

COLLEGE AUDITORIUM



We dedicate this show to the members of Phi Mu Alpha Sinfonia,
here and everywhere.

PRODUCTION STAFF

Director-Conductor.....MARY GRACE LAND
Stage Manager and Electrician.....DOROTHY CAIN
Assistant.....CURTIS HUGHES
Business Manager.....MILDRED PERRY
Rehearsal Assistants.....EDDIE MELTON, BOB GIPE
Dancing Chorus.....KRYSTAL SMITH
Skits.....BETTY WIGGINS
Chief Copyist.....MARGARET FELTNER



That the Campus Lights of America may not be extinguished by the cruel force of dictators;

That little boys and girls of America and the whole world may forever have the right to play and sing—in defense of these two ideas . . .

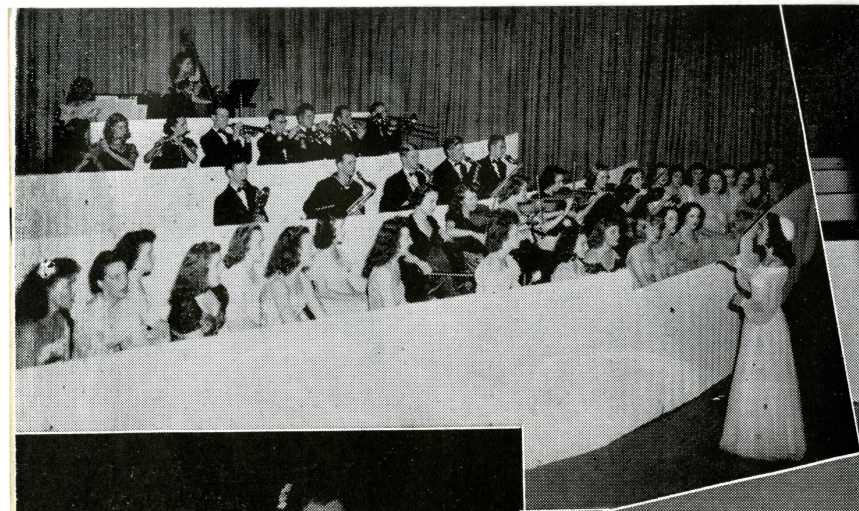
WE DEDICATE THIS SPACE

Corn-Austin Co.

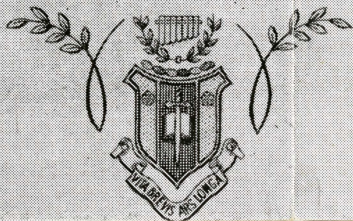
"WHERE MEN TRADE"

Program

1. Theme..... Arr. *Will Hudson*
2. Great Day..... Arr. *Bob Gipe*
Gamma Delta Chapter, Phi Mu Alpha
3. Story of A Starry Night..... Arr. *O/C Lindsey Merrill*
Gamma Delta Chapter, Phi Mu Alpha
Trio, Chorus, Band
4. Tramp, Tramp, Tramp..... Arr. *Pvt. Josiab Darnall*
Gamma Delta Chapter, Phi Mu Alpha
5. Actions Speak Louder Than Words—Written and Arranged
Josephine Franklin, Iota Beta Chapter, Sigma Alpha Iota
(First President)
Jean Van Hooser and Trio
6. Paradise Waltz..... Arr. *Gipe*
Dancing Chorus
7. Flight of the Bumblebee.... *Rimsky-Korsakov*—Arr. *Morey*
George Morey *Alpha Xi Chapter, Phi Mu Alpha*
8. Racing With The Moon..... Arr. *Gipe*
Chorus, Quintet
9. Adagio Dance
Barrett-Owens
10. It Had To Be You..... Arr. *Cpl. Elmo Reed*
Dorothy Cain *Gamma Delta Chapter, Phi Mu Alpha*
11. Bird's Eye View
Jordon, Ryan
12. Variations On A Mozart Theme..... Arr. *Morey*
Band



Top Left—"Great Day."
Top Center—"Curt a' Crooning."
Top Right—Lights and Music; Dimout In The Making.
Bottom Left—Lovely Ladies; Jeane and Barbara.
Center—The Trio; Martha Sue, Nelle, Dotsy.
Bottom Right—Pose?



Program

13. Low Man On a Totem Pole Larry Doyle
Ryan, Hughes, O'Brien
14. Lovely To Look At Arr. Eddie Melton
Dancing Chorus Gamma Delta Chapter, Phi Mu Alpha
15. High Man On A Ladder
Wiggins, Ryan
16. Spanish Dance Moskowski
Christmas Medley Arr. Musser
Dorothy Elliott
17. Waiting Frank Prindl
Chorus Alpha Upsilon Chapter, Phi Mu Alpha
18. Faculty Skit
19. O Holy Night Arr. Cpl. Arved Larsen
Dorothy Cain
20. Izzy Is Or Izzy Ain't My Basie Arr. Gipe
21. Temptation Arr. Gipe
Curtis Hughes
22. Yankee Doodle Dandy Arr. Gipe
Tap Chorus
23. Pavanne Gould—Arr. Morey
Band
24. Tea By Candlelight S/Sgt. Paul Bryant
Barbara Polk Arr. Cpl. Bill Parrish,
Gamma Delta Chapter, Phi Mu Alpha
25. Great News Is In The Making Arr. Ens. Wm. Shelton III
Band, Chorus, Tri Gamma Delta Chapter, Phi Mu Alpha
26. Theme

SKIT COMMITTEE—

Betty Wiggins, Frances Jordan, Curtis Hughes, Jean Ryan.

GLEE CLUB—

Martha Sue Crosby, Mary Esther Bottom, Jean Van Hooser, Anne Blanton, Gene Smith, Barbara Polk, Corrinne Durrett, Minnie Lee Churchbill, Mickie Chapman, Betty Ann Wake, Nelle Bizzle, Martha Jo Ross, Mildred Perry, Olo May Cathy, Bettye Eberhardt, Dorothy Cain, Helen Floyd, Mary Jane Dunn, Betty Hartley, Margaret Liechty, Mary Jane Cooper, Callie Harris, Betty Holland, Marjorie Arnett, Sue McKendree.

DANCERS—

Mary Jane Cooper, Frances Green, Sue McKendree, Aliese James, Norma Samons, Betty Ann Wake, Nancy Taylor, Martha Ellison, Ruth Prince, Jackie Pennebaker, Marilu Howton, LaNelle Bugg, Ava Nell Farmer, Jeanette Farmer, Elaine Mitchell, Joe McNeilly, Olga Jean Perkins, Clair Jenkins, Marion Treon, Louis Schrader, Ann Owens, Buddy Barrett, Norma Jean Weller, Bill Crosswy, Naomi Lee Whitnell, Phyllis Farmer.

STAGE BAND—

Wandi Donati, Frances Clark, Hazel Babb, Ruby Nell Brown, Lois Wiese, Lucy Smith, Eddie Melton, Norman Bromley, Bill Crosswy, C. A. Woodall, H. W. Emme, Frances Jordan, LaNelle Bugg, Marilu Howton, Bob Gipe, Clair Jenkins, Joe Long, Buddy Barrett, Jack Shinn, Bill Cobron, Anna Marie Friday, Byron Brown, Charlotte Durkee.

Campus Lights



*Again this subtle magic rides the air;
The Campus Lights begin to faintly glow.
For us who saw them, once, but are not there
They have a meaning only we can know.*

*Brighter than fire they are—sharper than darts—
And we who walk abroad on this one night
Feel now a desperate longing in our hearts,
And learn how dull, forgotten scars grow bright.*

*This we have always cherished—but now, more;
We lift our eyes and turn and listen here;
We see the dim lights glowing as before,
Far-off and faint at first, and now more near.*

*We have a need of such a greeting flung
Across our thought—across our eager sight.
In these dark places that we walk among
This is the gift most precious—peaceful light.*

*These bright and lovely images of peace
Might well be pictures that the mind had wrought
Out of some tortured labor at release—
From the dark chambers of tormented thought.*

*And turning back to our own tasks again,
Touched with the difference that a dream can make,
We are no more the same men among men
But, all-exalted for this vision's sake,
We bear within our hearts...by days...by nights...
The fragile beauty of the Campus Lights.*

—TOM DODD, 2-6-44.