



1985-02-14

Campus Lights 1985

Murray State University

Follow this and additional works at: <https://digitalcommons.murraystate.edu/campuslights>

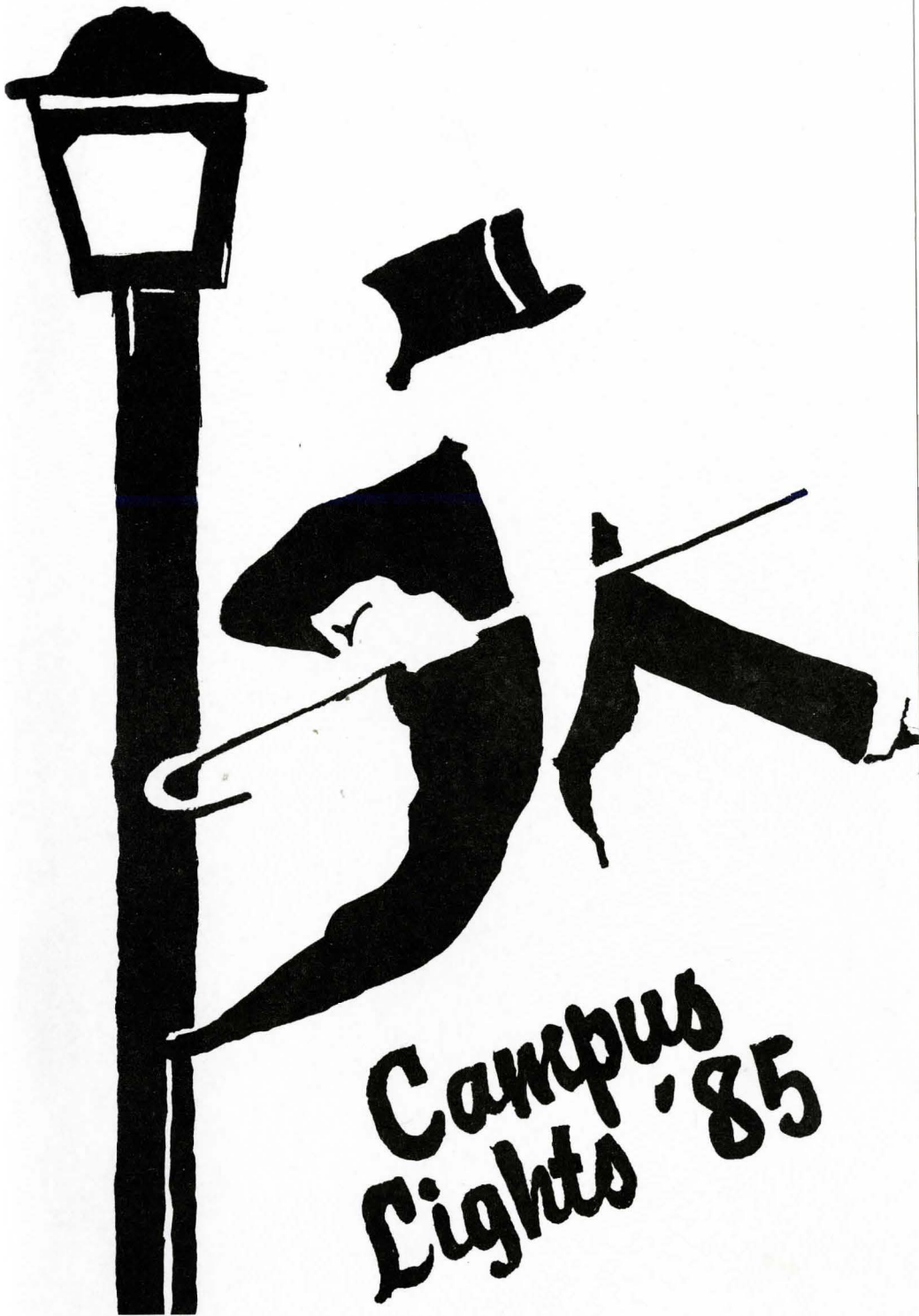


Part of the [Acting Commons](#), and the [Music Performance Commons](#)

Recommended Citation

Murray State University, "Campus Lights 1985" (1985). *Campus Lights*. 39.
<https://digitalcommons.murraystate.edu/campuslights/39>

This Article is brought to you for free and open access by the Digitized Collections at Murray State's Digital Commons. It has been accepted for inclusion in Campus Lights by an authorized administrator of Murray State's Digital Commons. For more information, please contact msu.digitalcommons@murraystate.edu.



Campus Lights '85

Presented by
Phi Mu Alpha and Sigma Alpha Iota



Murray State University

Office of the President
Murray, Ky. 42071 (502) 762-3763

It is with great pride and pleasure that I welcome you to the forty-eighth production of Campus Lights. The curtains went up for the first time in 1937 and has since become one of our oldest, cherished traditions at Murray State University.

Through these many years characterized by war, changes in students, changes in faculty and personnel, and growth of the University, this campus event has remained a steady, unyielding reminder of our past, our memories, and our dreams.

Each year through the dedication of more than one hundred students, endless hours of late-night rehearsal, the building of sets, the writing of scores, and the guidance of faculty, the magic of Campus Lights once again comes alive.

Thank you for joining us as Murray State University proudly presents the 1985 production of Campus Lights.

Kala M. Stroup
Kala M. Stroup

Campus Lights

of 1985

Murray State University

Forty-eighth Annual Production

February 14, 15, 16, 17

Lovett Auditorium

Dear Friend,

The 48th annual production of "Campus Lights" begins this year on Valentine's Day, an appropriate curtain date for what is truly "an affair of the heart." "Campus Lights" is deeply imbedded in the minds and hearts of participants and audiences who have shared for nearly half a century in one of Murray State's most cherished traditions.

The tradition continues to hold steadfast to principles set forth during the show's inception. Talented students from across the campus are involved in the show and profits continue to generate scholarships for entering freshmen with demonstrated abilities in music.

We believe you will enjoy the show. If this is your first time to attend, we look forward to your becoming a part of the tradition and returning each year to experience the aspects which, as in ritual, do not change and lend added meaning with each repetition. If this show marks your return, we look forward to greeting you as you greet old friends and make new acquaintances.

As always, the Department of Music extends grateful appreciation to the students, faculty, alumni and members of the community who keep "Campus Lights" an affair of the heart."

Sincerely,
Roger Reichmuth, Chairman
Department of Music
Faculty Advisor

I would like to thank everyone for attending this 48th production of "Campus Lights." You are in for a real treat! Everyone from the producer and directors to the cast and the stage hands have worked hard to make this year's "Campus Lights" shine brighter than ever.

Enjoy the show!!!

Sincerely,
Gray A. Scaglione
Chairman, Board of Producers
"Campus Lights" 1985

On behalf of the Sisters of the Iota Beta chapter of Sigma Alpha Iota, I would like to welcome you to the 48th annual production of Campus Lights.

Thank you for your continuing support of our music scholarships for the incoming freshman.

Sit back and enjoy the show. We hope that this show is entertaining and filled with lots of memories.

Sincerely,
Sandy Thomas
President, Iota Beta
Sigma Alpha Iota

Ladies and Gentlemen,

Welcome to the 48th annual production of Campus Lights. This year's production present to you the finest talent of Murray State University. It is with great pride and enthusiasm that we bring to you Murray State's oldest musical tradition.

Thanks to the cast, crew, and production staff who have spent much time and energy in preparing this tradition.

I hope you enjoy the magic of Campus Lights and thank you for supporting the show.

Sincerely,
Ronnie Oliver Jr.
President, Gamma Delta
Director, Campus Lights
OASAASLLS

PRODUCTION STAFF

BOARD OF PRODUCERS

Gray Scaglione
Brad Myatt
Charles Proffitt
Jennifer Cole
Sandy Thomas

DIRECTOR

Ronnie Oliver

ASST. DIRECTOR

Miki D. Lynn

WRITERS

Cam Williams Mary Lou Fitzgerald Ronnie Oliver

Stage Manager. Craig B. Teer
Music Tech. Dale Tuggle
Band Director. Todd Hill
Chorus Director. Greg Varner
Lighting Director. Larry Drake

Staff: Sherrie Dailey, Jerry Bowles,
Denny Neer, Lee Drake

Choreographer. Bethany Holland
Set Design Chuck Stribling
Sound. Brad Myatt

Staff: Scott Barnett, Ronald Watkins
Dan Burnham, Denny Neer, Steve Ward
John Gold

Properties. Jennifer Shaughnessy
Program Miki Lynn

Staff: Sandy Thomas

Photographer. Larry Brant
House Manager. Melinda Bugg

Make-up Diana Johnson

Staff: Danny Prather, JoAnn Hardin,
Karen Hester, Barbara Vickery
Mitch Dupree, Robert Desimone

Costume. Sue Quinn

Staff: Hope Convoy, Martha Fern
Leslie Sizemore, Susie Goodgine

Tickets. Shari Johnson

Assistant: Charles Proffitt

Bookkeeper. Jacky Howlett

Cover Design Sharon Snowberger

Faculty Advisor. Roger R. Reichmuth



Board of Producers



Directors

PROGRAM

Moonlove Johnson/Stewart*
Everything's Coming Up Roses Arr. Todd Hill
On Broadway Arr. Gray Scaglione/Greg Varner
I'm the Greatest Star Arr. Todd Hill
Can't Help Lovin' That Man Arr. Todd Hill
Ol' Man River Arr. Dean Smith
There's No Business Like Show Business
Arr. Dean Smith/ Greg Varner
Anything You Can Do, I Can Do Better
Arr. Rick Mozeliski
I'm Gonna Wash That Man Right Outta My Hair
Arr. Gray Scaglione
I'm Just a Girl Who Cain't No Arr. Chuck Bradley*
Cool Arr. Gray Scaglione
Tonight (Quintet) Arr. Jay Fern
Embraceable You Arr. Todd Hill
Friendship Arr. Tracy Fortson

*****INTERMISSION*****

Band Feature Arr. Kevin White*
If You Believe Arr. Todd Hill
I Hope I Get It Adapted by Greg Varner/Todd Hill
Oh, What a Beautiful Mornin' Arr. Rick Mozeliski
The Music and the Mirror Arr. Dean Smith
Do Re Mi Arr. Miki Lynn
Tomorrow Arr. Dale Tuggle/Greg Varner
I Don't Know How to Love Him Arr. A.G. McGrannahan*
Hard Knock Life Arr. Joe Jackson*
Somewhere Arr. Paul W. Shahan**
Everybody Arr. Jay Fern*
Moonlove (Epilogue) Johnson/Stewart*

*Alumni Arranger
**Faculty

CAST/CHORUS

Anne. Jennifer Beck
 Kurt. Keith Roberts
 Director. Cam Williams
 Byron. Larry Drake
 Gwendolyn Pulaski. Lisa Cabanis
 Old Woman. Dee Banister

Scott Alexxander	Janie Howerton
Andy Birch	Julie Janowaik
Melanie Black	William Jordan
Rayla Beth Bridges	Robbie Jo Kieper
Lisa Cabanis	Teri King
Kevin Clark	Rebecca Lindsey
Kevin Cole	B.J. McGibney
Sherrie Dailey	Audra Orr
Robert DeSimone	Lisa Reed
Mitch Dupree	Pam Rushing
Susan Edwards	Peter Shepard
T.J. Edwards	Brian Sirles
Media Faith	Sara Spahr
Angela Fritts	Erika Washer
Julie Garrard	Amy Werschky
Paula Hedges	Lucy Wheeler
Kenneth Woods	Marilea Beth Widick



Cast

CAMPUS LIGHTS 1985 BAND

Flute

Amy Frederick
 Laura Allen

Clarinet

Kathy White
 Jeff Parker
 Rick Mozeleski (also Bassoon)

Alto Saxophone

Michael Congiaro
 Jimmy Bowland

Tenor Saxophone

Marsha Broady
 Susan Perry

Baritone Saxophone

Karen Atkins

Trumpets

Rich Edwards
 Kurt Slaughenhoupt
 Jessica Shanklin

Horns

Dale Tuggle
 Alan Mattingly

Trombones

Dean Smith
 Chuck Stribling
 Jesse Walker (bass)

Rhythm

Tracy Fortson-piano
 Donnie Skaggs-guitar
 Kevin Sitton-bass
 Rick Wagoner-set
 Leigh Draper-set



DANCERS

Sheri Green
Teri King
Erika Washer

Robbie Jo Kieper
Audra Orr

CAMPUS LIGHTS COMMITTEE CHAIRMEN



Committee Chairmen

Roger Reichmuth, Chairman, Department of Music

The Department of Music

The music at Murray State is good. The opportunities to expand musical talents or begin new ones at Murray State are diverse and of depth.

Three degree programs in music prepare the teacher, performer, historian, and librarian, as well as the person interested in careers in which music may be a primary or secondary interest. The Bachelor of Music Education degree carries teacher certification K-12. The Bachelor of Music degree is for the aspiring professional performer, and the Bachelor of Arts in Music provides a liberal arts background with a strong music emphasis. You can obtain a minor in music at Murray State.

Non-music majors as well as music majors enjoy the Racer Band, Wind Ensemble, Symphony Orchestra, Choir, Chorus, Opera Workshop, Madrigal Singers, Guitar Classes, Piano Classes, Organ Lessons, Jazz Bands and Combos, Brass Choir, Percussion Ensemble and Chamber Music Groups.

An impressive scholarship program is available. Inquiry should be made now for the auditions of February 18, 1984. Special opportunities exist in the areas of string instruments, double reeds, flute, clarinet and voice.

The University

Murray State University is located in the beautiful lakes region of West Kentucky. Its attractive, tree-lined campus is located in Murray, recently honored as an "All-Kentucky City." The friendly Murray community is a natural setting for enjoyable college life.

Those who live and study here benefit from Murray State's peaceful 232-acre landscape. It is a special place where quality education comes to life. Professors who care and students who are ready to achieve make this university unlike any other.

An MSU education leads to achievements. That is why so many students choose our university. From enrollment to graduation, we help students prepare for professional careers. Our graduates enter the job market with skills and experiences, not excuses.

If you are concerned about your future, give Murray State University serious consideration. If you have questions or would like to schedule a campus visit, simply contact our Admissions Office. You'll receive a quick, friendly response.

CHUCK'S MUSIC CENTER

"FOR BETTER MUSIC
EVERYWHERE"

Ph: 753-3682 1411 Main Street

Murray
Kentucky

- *BAND INSTRUMENTS
- *ELECTRONIC KEYBOARDS
- *ACCESSORIES
- *SALES/SERVICE

**Boone
Laundry &
Cleaners**

The cleaners
interested in
you.

Six convenient
locations



Writers

**THURMAN
FURNITURE,
INC.**

Phone
502-753-4834

208 East Main St.
Murray, KY 42071



LITTLETON'S

OUR PEOPLE CARE.

It's our policy. . .

It's our promise.



PEOPLES BANK

MURRAY KY.

In banking, **PEOPLE** still make the difference.

Member F.D.I.C.



**IT'S A
GOOD TIME
FOR THE
GREAT
TASTESM**



The best pizza in town.

Honest!



**MURRAY
MONTESSORI
SCHOOL**

2nd Floor Curris Center

HOMEMADE FUDGE

HOMEMADE COOKIES

Offering a structured
educational program
for 2½-6 year olds.

*"The education of even a very small
child does not aim at preparing
him for school but for life."*

MARIA MONTESSORI

212 North 15th Street
Murray, Kentucky 753-8380
FRANCIE BEARD VANARDEL

MasterCard

VISA

**SINCE 1934
DISCOUNT PRESCRIPTIONS**

Pay Less

SIX CONVENIENT LOCATIONS

DOWNTOWN
442-8281

LONE OAK
554-0480

PADUCAH MALL
442-6194

319 BROADWAY 2560 LONE OAK RD. PADUCAH MALL

MURRAY
753-2547

PRINCETON
365-9537

1205 CHESTNUT ST.

122 WEST MAIN

KY. OAKS MALL

442-5001

KY. OAKS MALL



Bank of Murray

"THE FRIENDLY BANK"

Member FDIC

COMPLIMENTS OF



10TH AND CHESTNUT STREETS
MURRAY, KENTUCKY 42071

PHONES
BUSINESS: 753-1474
RESIDENCE: 753-3352

**University
Books Store**
Murray State University

CAVALCADE *Enterprises*

FOR INNOVATIVE MARCHING PRODUCTS

Pardon Us for Blowing Our Own Horn

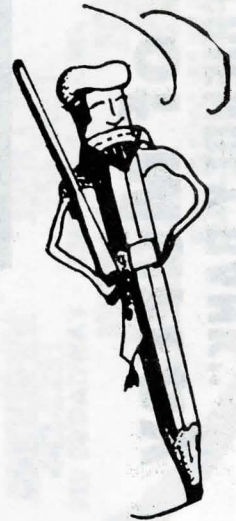


You have trusted THE CAVALCADE Performance Workshops to train your flags, rifles, majorettes, pom poms and field commanders.

Now we are prepared to help you with your band equipment needs. We offer quality and innovation at the lowest possible prices.

DAVID A. WELLS

800 MINERVA PLACE
MURRAY, KENTUCKY 42071
PHONE: (502) 753-3700



with the quality difference



Coast to Coast

TOTAL HARDWARE



*"We're
Here To
Help You"*

Central Shopping Center
"Across from the Stadium"
753-8604

campus lights

WHERE ARE YOU??????????????

What year did you participate- _____

What did you do- _____

The Iota Beta Chapter of Sigma Alpha Iota and the Gamma Delta Chapter of Phi Mu Alpha are eager to hear from all alumni and all past participants of Campus Lights.

NAME _____

ADDRESS _____

PHONE NUMBER _____

PLAN TO ATTEND THE 50th CAMPUS LIGHTS (1987).

Send to: Phi Mu Alpha
Gamma Delta
Box 2275 University Station
M.S.U.
Murray, Ky. 42071

Sigma Alpha Iota
Iota Beta
Box 2336 University Station
M.S.U.
Murray, Ky. 42071

Thank you for attending Campus Lights



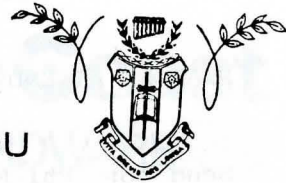
WE WISH YOU
THE VERY BEST

FROM

PHI MU ALPHA

AND

SIGMA ALPHA IOTA



Forty-eight years of Campus Lights

Forty-eight years of Corn Austin

It is with considerable pride that we have been an advertising sponsor for Campus Lights from its beginning. From the first night, through the war years, and to the present time, we have occupied this page. We are proud of the fact that we have had this association through the years with those who have labored to make this event possible.

To those of former years who have contributed to the success of this production and to those who carry on so faithfully today . . .

We Dedicate This Space

CORN-AUSTIN CO.

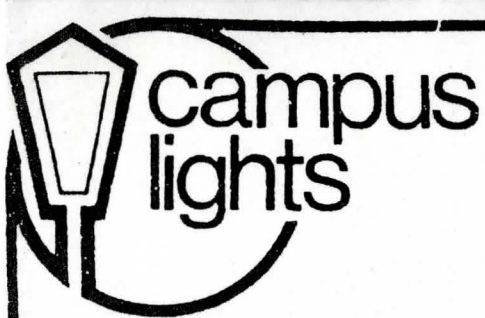
"WHERE MEN TRADE"
DOWNTOWN MURRAY
and
PARIS, TENN.

Campus Lights

*The campus lights come gleaming one by one
From out the dim recesses of our minds,
And each one lights a scene of yesterday,
A scene that really was, or might have been.
And in each scene we see ourselves go by.
We catch a glimpse of laughs, of sighs, of tears.
And e'er this fleeting dream is gone, we fill
Our minds with memories that never die . . .*

*Our vision fades. The campus lights grow dim.
Our hands reach out to grasp and hold each scene
That passes, never to return except
In fleeting dreams of cherished yesterdays.
Our days of laughs and sighs and tears are gone.
Guarded with jealous care through passing years
We keep a golden shrine of memory
Safe locked within a treasure-house of dreams.*

— Edward K. West
Gamma Delta.



ANNOUNCING

The 48th Annual Production

of

CAMPUS LIGHTS

What Is "Campus Lights"?

"Campus Lights" is an annual production that is written, produced and directed by students at Murray State University. The show is sponsored by members of the Phi Mu Alpha and Sigma Alpha Iota fraternities with proceeds donated toward music scholarships.

The show has traditional elements such as an opening scene with orchestra and chorus, a big band feature number and comedy walk-ons. Other than the traditional elements, each year's show is brand-new.

This year the show focuses on the top hits from Broadway musical productions. There will be plenty of live music, singing, dancing, comedy routines and colorful staging.

What Are the Details?

Dates:	February 14-16	February 17
	8 p.m.	2 p.m.
	Lovett Auditorium	Lovett Auditorium
Tickets:	ADULTS	\$4.00
	STUDENTS & SR. CITIZENS	3.00
	UNDER AGE TWELVE	2.50
	SPECIAL RATES:	
	Group rates (10 or more) Each ticket discounted 50¢	
	Valentine's Day Special	
	February 14th Only:	Students \$2.00
	Sunday Special:	Each ticket discounted 50¢ if bought at door & church bulletin shown.

How May I Make Reservations:

Simply return the enclosed form or call (502) 762-4288.

AT YOUR LEISURE

Lights!

Campus!

Action!

Murray Ledger & Times B3
02/13/85

Students keep the faith of MSU stage tradition with 47th production

By CHARLES HONEY
Staff Writer

"Campus Lights," a Murray State tradition as venerable as Wrather Hall, lights up Lovett Auditorium this weekend, as it has yearly since 1937.

A 35-member cast and two-dozen-member orchestra are only the most visible elements of this student production

as the late 1930s "Show Boat" to the recent "The Wiz," "Funny Girl" and "Annie."

The production results from the energies of some 80 students who make up the company. Work on it began last spring with the election of officers and artistic directors. Gray Scaglione was

in it. They're very serious about it."

Reichmuth saw his first show in 1958 as a freshman. As a high school student in Louisville, he had heard about it from cohorts attending MSU, and was "fascinated with the idea of students doing the whole production." He immediately got in

through Saturday, Feb. 14-16, and at 2 p.m. Sunday, Feb. 17. Tickets are \$4 for adults, \$3 for students and senior citizens and \$2.50 for children under age 12. Group rates are available.

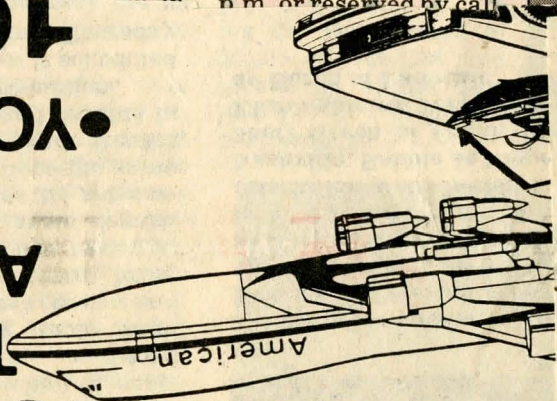
Tickets may be purchased in the Curris Center from 11 a.m. to 2 p.m. or reserved by call

100% RENAULT

• YOU COULD WIN 1 of 8

AMERICAN AIRLINES

• YOU COULD WIN 1 of 8 TRIPS FOR TWO ON



PRODUCT PRIZES!



PLAY

\$60

26-6-E

26-6-E

Non-music majors find diverse pleasure in 'Campus Lights'

MURRAY, Ky. — Why do non-music majors try out for parts in campus musical productions at Murray State University? Ask Kevin Clark, Sarah Spahr or Beth Widick.

With their diverse academic backgrounds, the three students are involved in the 47th annual "Campus Lights" musical scheduled Feb. 14-17 in Murray State's Lovett Auditorium.

Clark, a freshman pre-medicine major from Paducah, said being in the musical's chorus provides a release from the pressures of a tough class schedule, and adds that he has never seriously considered a career in music.

"I know I'm going to enjoy the stability and rewards of being a doctor. However, I will keep my music as a hobby."

Clark, a presidential scholar at MSU, is the son of Mr. and Mrs. Larry Clark of Paducah Rt. 10.

Spahr — who auditioned for the production because her music-major friends talked her into it — said her involvement in "Campus Lights" has helped improve her grades.

"Being in the musical has given me more responsibility to sit down and do my school work efficiently so I have time left for other things," she said.

Spahr, a junior math major, is the daughter of Mr. and Mrs. David Spahr of 220 Park Lane Drive in Paducah.

"I really like the family atmosphere of the production," said Widick, a math major. "Even though all the performers in 'Campus Lights' have different academic backgrounds, we are striving for the same thing — perfection. That gives us a closeness that's really special."

Widick, a freshman presidential scholar, is the daughter of Mr. and Mrs. Leland Widick of 204 W. Broadway in McLeansboro. III

Dr. Roger Reichmuth, chairman of the department of music, said there is a tradition of having many non-music majors in "Campus Lights."

"I think the limited scope of time involvement — plus the fact that musical activities add to a fulfilling career in college — draws many types of students to our productions."

The 1985 production presents music from classic and modern Broadway hits from the late 1930s "Showboat" to recent productions of "The Wiz" and "Annie." The company includes a 42-voice choir, 20-piece band and 25-member production crew.

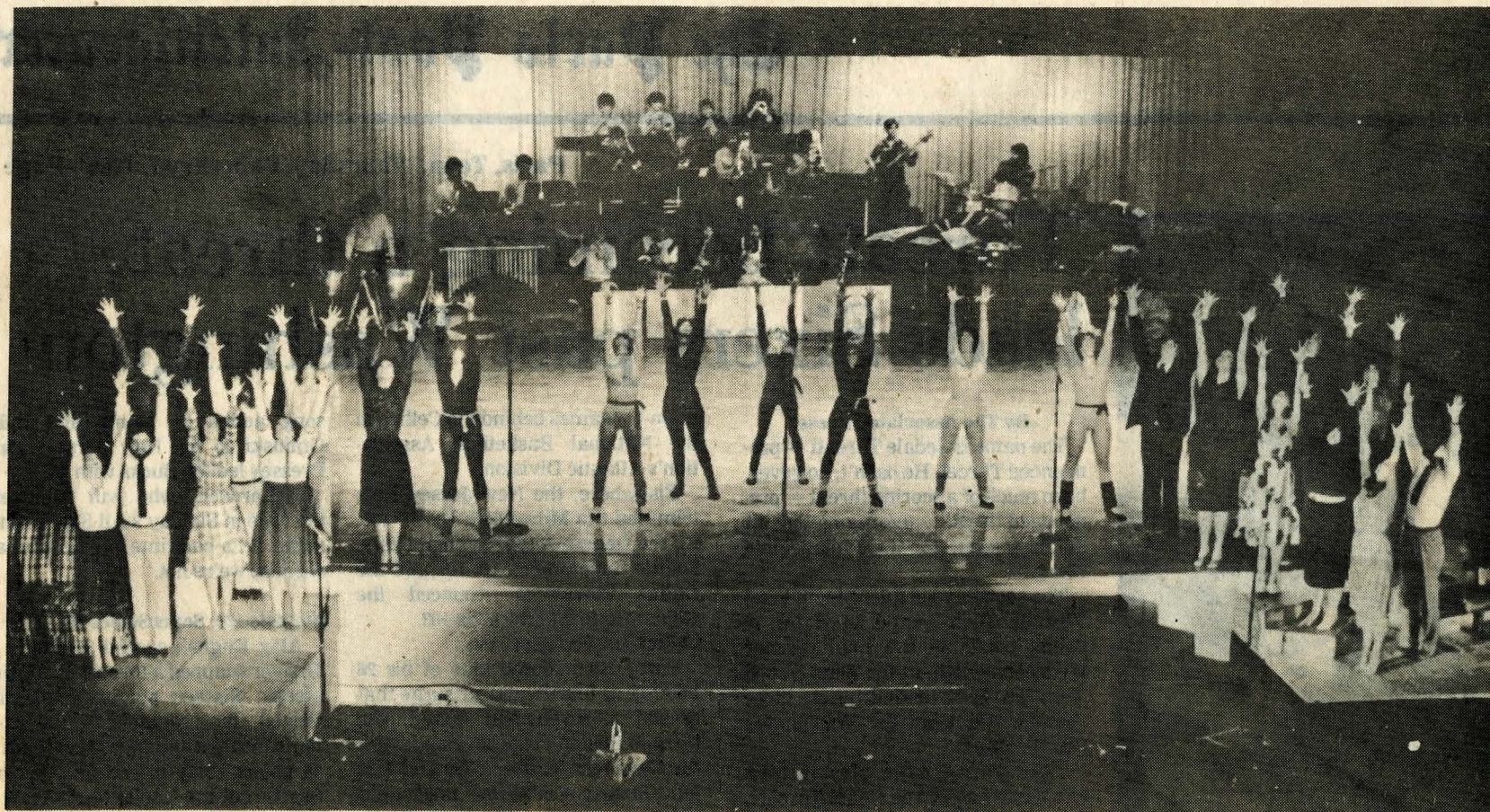
Students write, direct, produce and perform "Campus Lights," which is generally recognized as one of the most outstanding college musical productions in the country.

Sponsors are the two music fraternities on campus, Sigma Alpha Iota for women and Phi Mu Alpha Sinfonia for men. Proceeds go into a scholarship fund for music students.

Performances are scheduled at 8 p.m. Feb. 14-16, with a 2 p.m. matinee Feb. 17. Tickets are \$4 for adults, \$3 for students and senior citizens and \$2.50 for children under age 12. Special group rates are available.

Reservations may be made by phoning (502) 762-4288 or by writing the Department of Music, Murray State University, Murray, Ky. 42071.

Dwain McE
26-6-E



'Campus Lights'

Murray State University students rehearse for the "Campus Lights" show to be held at the university Feb. 14-17. A special bus trip for the Feb. 17 performance is being sponsored locally by the Paris-Henry County Arts Council. Bus tickets and orchestra seats for the Sunday afternoon show are \$11 a person. The bus will leave at 1 p.m. from the Jim Adams parking lot on Mineral Wells Avenue. For reservations call 642-3955.

Two Murray students in 'Campus Lights' ^{26-6E}

Two Murray State University students from Murray are part of the 87-student company for the 47th annual "Campus Lights" production in Lovett Auditorium, Feb. 14-17.

They are Rick Wagoner, band member and the son of Mrs. Marjorie Wagoner of Murray, Route 5, and Kevin Cole, chorus member and the son of Mr. and

Mrs. Loal Cole of 1703 W. Main.

The 1985 production presents music from classic and modern Broadway hits, from the late 1930s "Showboat" to the recent "The Wiz" and "Annie." The company includes a 42-member production crew.

Students write, direct, produce and perform "Campus Lights," which is generally

recognized as one of the most outstanding college musical productions in the country.

Sponsors are the two music fraternities on the campus, Sigma Alpha Iota for women and Phi Mu Alpha Sinfonia for men. Proceeds go into a musical scholarship fund.

Performances are scheduled at 8 p.m. Thursday, Friday and Saturday, Feb. 14-16,

with a matinee at 2 p.m. Sunday, Feb. 17. Tickets are \$4 for adults, \$3 for students and senior citizens and \$2.50 for children under age 12. Special group rates are available.

Reservations may be made by calling (502) 762-4288, or writing to the Department of Music, Murray State University, Murray, Ky., 42071.

Murray Ledger 2-6-85 A-3

The lure of Campus Lights draws students from all fields

Murray Ledger A-2 2-4-85

Why do non-music majors try out for parts in campus musical productions at Murray State University?

Ask Kevin Clark, Sarah Spahr or Beth Widick.

They are three of the students with diverse academic backgrounds who are involved in the 47th annual "Campus Lights" musical scheduled Feb. 14-17 in Murray State's Lovett Auditorium.

Clark, a freshman pre-medicine major from Paducah, said being in the musical's chorus provides a release from the pressures of a tough class schedule. He adds that he has never seriously considered a career in music.

"I know I'm going to enjoy the

stability and rewards of being a doctor. However, I will keep my music as a hobby."

Clark, a Presidential Scholar at Murray State, is the son of Mr. and Mrs. Larry Clark of Paducah Route 10.

Miss Spahr — who auditioned for the production because her music-major friends talked her into it — said her involvement in "Campus Lights" has helped to improve her grades.

"Being in the musical has given me more responsibility to sit down and do my school work efficiently so that I have time left for other things," she said.

Miss Spahr, a junior math major, is the daughter of Mr. and Mrs. David Spahr of 220 Park Lane Drive, Paducah.

"I really like the family atmosphere of the production," said math major Beth Widick. "Even though all of the performers in 'Campus Lights' have different academic backgrounds, we are striving for one thing — perfection. That gives us a closeness that's really special."

Miss Widick, a freshman Presidential Scholar, is the daughter of Mr. and Mrs. Leland Widick of 204 W. Broadway, McLeansboro, Ill.

Dr. Roger Reichmuth, chairman of the department of music, said there is a tradition of having many non-music majors in "Campus Lights."

"I think the limited scope of time involvement — plus the fact that musical activities add to a fulfilling career in college — draws many types of students to our productions."

The 1985 production presents music from classic and modern Broadway hits from the late 1930s "Showboat" to the recent "The Wiz" and "Annie." The company includes a 42-voice chorus, 20-piece band and 25-member production crew.

Students write, direct, produce and perform "Campus Lights," which is generally recognized as one of the most outstanding college musical productions in the country.

Sponsors are the two music fraternities on the campus, Sigma Alpha Iota for women and Phi Mu Alpha Sinfonia for men. Proceeds go into a musical scholarship fund.

Performances are scheduled at 8 p.m. Thursday, Friday and Saturday, Feb. 14, 15 and 16, with a matinee at 2 p.m. Sunday, Feb. 17. Tickets are \$4 for adults, \$3 for students and senior citizens and \$2.50 for children under age 12. Special group rates are available.

Reservations may be made by calling (502) 762-4288, or writing to the Department of Music, Murray State University, Murray, Ky., 42071.

'Campus Lights': MSU tradition continues with 47th production

26-6-E

People who love classic Broadway musicals will find a smorgasbord in the 47th annual production of "Campus Lights" at Murray State University.

Scheduled for Feb. 14-17 in Lovett Auditorium, the 1985 musical is based on a dozen popular Broadway shows. Numbers are taken from the late 1930s "Show Boat" to the recent "The Wiz," "Funny Girl" and "Annie."

"Music had always been the heart of 'Campus Lights,'" says director Ronnie Oliver Jr., a senior from Owensboro. "So the writers looked for a way to give the audience as much music as possible this year."

Oliver said 25 complete numbers will be performed. A sample of other Broadway shows

covered includes "Annie Get Your Gun," "South Pacific" and "A Chorus Line."

A traditional boy-meets-girl story binds the music together. The main characters are "Kurt Allen," played by Keith Roberts of Madisonville Route 5, and "Anne Blake," Jennifer Beck of Calvert City.

"Anne" and "Kurt" meet at an audition and fall in love as they try for parts in a series of "Broadway shows."

The competition spawns an inevitable spat about who has the most talent.

The cast includes a 42-member chorus, 20-piece band and production crew of about 25. The show, as always, is totally written and produced by students and sponsored by the two music fraternities — Sigma Alpha Iota for

women and Phi Mu Alpha Sinfonia for men.

Others involved in the show include Gray A. Scaglione of Beaufort, S.C., chairman of the board of directors; Miki Lynn of Boaz, assistant director; Todd Hill of Paris, Tenn., band director; Greg Varner of Norris City, Ill., Route 2, chorus director; and Bethany Holland of Calvert City, choreographer. Dr. Roger Reichmuth is the faculty sponsor.

Will "Anne" and "Kurt" land a part in a "Broadway Production" and/or get back together? Oliver answers that the show does have a history of happy endings.

Show times are 8 p.m. Thursday, Friday and Saturday, Feb. 14-16, and at 2 p.m. Sunday, Feb. 17. Tickets are \$4 for adults, \$3 for

students and senior citizens, and \$2.50 for children under age 12, with a 50-cent discount per ticket for groups of 10 or more and on Sunday for anyone with a church bulletin.

Reservations may be made by calling (502) 762-4288, or writing to the Department of Music, Murray State University, Murray, Ky., 42071.

Murray State

1-23-85
B-13

47th 'Campus Lights' production is scheduled Feb. 14-17 at MSU

MURRAY, Ky. — People who love classic Broadway musicals will find a smorgasbord in the 47th annual production of "Campus Lights" at Murray State University.

Scheduled Feb. 14-17 in Lovett Auditorium, the 1985 musical is based on a dozen popular Broadway shows. Numbers are taken from the late 1930s "Show Boat" to the recent "The Whiz," "Funny Girl" and "Annie."

"Music has always been the heart of 'Campus Lights,'" says director Ronnie Oliver Jr., a senior from Owensboro. "So the writers looked for a way to give the audience as much music as possible this year."

Oliver said 25 complete numbers will be performed. A sample of other Broadway shows covered includes "Annie Get Your Gun," "South Pacific" and "A Chorus Line."

A traditional boy-meets-girl story binds the music together. The main characters are Kurt Allen, played by Keith Roberts of Madisonville, and Anne Blake, played by Jennifer Beck of Calvert City.

Anne and Kurt meet at an audition and fall in love as they try for parts in a series of Broadway shows. The competition spawns an

tion crew of about 25. The show, as always, is totally written and produced by students and sponsored by the two music fraternities — Sigma Alpha Iota for women and Phi Mu Alpha Sinfonia for men.

Others involved in the show include Gray A. Scaglione of Beaufort, S.C., chairman of the board of directors; Miki Lynn of Boaz, assistant director; Todd Hill of Paris, Tenn., band director; Greg Varner of Norris City, Ill., chorus director, and Bethany Holland of Calvert City, choreographer. Dr. Roger Reichmuth is the faculty sponsor.

Will Anne and Kurt land a part in a Broadway production and/or get

back together? Oliver answers that the show does have a history of happy endings.

Show times are 8 p.m. Thursday, Friday and Saturday, Feb. 14-16, and at 2 p.m. Sunday, Feb. 17. Tickets are \$4 for adults, \$3 for students and senior citizens, \$2.50 for children under age 12, with a 50-cent discount per ticket for groups of 10 or more and on Sunday for anyone with a church bulletin.

Reservations may be made by telephoning 762-4288, or writing to the Department of Music, Murray State University, Murray, Ky. 42071. Proceeds from "Campus Lights" go into a music scholarship fund.

26-6-E

Ann 1-20-85 E-2

47th 'Campus Lights' production is scheduled Feb. 14-17 at MSU

MURRAY, Ky. — People who love classic Broadway musicals will find a smorgasbord in the 47th annual production of "Campus Lights" at Murray State University.

Scheduled Feb. 14-17 in Lovett Auditorium, the 1985 musical is based on a dozen popular Broadway shows. Numbers are taken from the late 1930s "Show Boat" to the recent "The Whiz," "Funny Girl" and "Annie."

"Music has always been the heart of 'Campus Lights,'" says director Ronnie Oliver Jr., a senior from Owensboro. "So the writers looked for a way to give the audience as much music as possible this year."

Oliver said 25 complete numbers will be performed. A sample of other Broadway shows covered includes "Annie Get Your Gun," "South Pacific" and "A Chorus Line."

A traditional boy-meets-girl story binds the music together. The main characters are Kurt Allen, played by Keith Roberts of Madisonville, and Anne Blake, played by Jennifer Beck of Calvert City.

Anne and Kurt meet at an audition and fall in love as they try for parts in a series of Broadway shows. The competition spawns an inevitable spat about who has the most talent.

The cast includes a 42-member chorus, 20-piece band and produc-

tion crew of about 25. The show, as always, is totally written and produced by students and sponsored by the two music fraternities — Sigma Alpha Iota for women and Phi Mu Alpha Sinfonia for men.

Others involved in the show include Gray A. Scaglione of Beaufort, S.C., chairman of the board of directors; Miki Lynn of Boaz, assistant director; Todd Hill of Paris, Tenn., band director; Greg Varner of Norris City, Ill., chorus director, and Bethany Holland of Calvert City, choreographer. Dr. Roger Reichmuth is the faculty sponsor.

Will Anne and Kurt land a part in a Broadway production and/or get

back together? Oliver answers that the show does have a history of happy endings.

Show times are 8 p.m. Thursday, Friday and Saturday, Feb. 14-16, and at 2 p.m. Sunday, Feb. 17. Tickets are \$4 for adults, \$3 for students and senior citizens, \$2.50 for children under age 12, with a 50-cent discount per ticket for groups of 10 or more and on Sunday for anyone with a church bulletin.

Reservations may be made by telephoning 762-4288, or writing to the Department of Music, Murray State University, Murray, Ky. 42071. Proceeds from "Campus Lights" go into a music scholarship fund.

See 1-20-85 E-2

MURRAY, Ky., Jan. 18 -- Three Murray State University students from Danville, Ill., are part of the 87-student company for the 47th annual "Campus Lights" production in Lovett Auditorium on the campus Feb. 14-17.

They are chorus members Jennifer Ann Cole, the daughter of Mr. and Mrs. Bob Cole of 1125 Wilkin Road; Pamela J. Cannon, the daughter of Mr. and Mrs. Steve Cannon of 506 E. Winter; and Juliet Jackson, the daughter of Mr. and Mrs. Joe Jackson of 1409 Golf Terrace.

The 1985 production presents music from classic and modern Broadway hits from the late 1930s "Showboat" to recent "The Wiz" and "Annie." The company includes a 42-voice chorus, 20-piece band and 25-member production crew.

Students write, direct, produce and perform "Campus Lights," which is generally recognized as one of the most outstanding college musical productions in the country.

Sponsors are the two music fraternities on the campus, Sigma Alpha Iota for women and Phi Mu Alpha Sinfonia for men. Proceeds go into a musical scholarship fund.

Performances are scheduled at 8 p.m. Thursday, Friday and Saturday, Feb. 14, 15 and 16, with a matinee at 2 p.m. Sunday, Feb. 17. Tickets are \$4 for adults, \$3 for students and senior citizens and \$2.50 for children under age 12. Special group rates are available.

Reservations may be made by calling (502) 762-4288, or writing to the Department of Music, Murray State University, Murray, Ky., 42071.

Others involved in the show include Gray A. Scaglione of Beaufort, S.C., chairman of the board of directors; Miki Lynn of Boaz, assistant director; Todd Hill of Paris, Tenn., band director; Greg Varner of Norris City, Ill., Route 2, chorus director; and Bethany Holland of Calvert City, choreographer. Dr. Roger Reichmuth is the faculty sponsor.

Will "Anne" and "Kurt" land a part in a "Broadway Production" and/or get back together? Oliver answers that the show does have a history of happy endings.

Show times are 8 p.m. Thursday, Friday and Saturday, Feb. 14, 15 and 16, and at 2 p.m. Sunday, Feb. 17. Tickets are \$4 for adults, \$3 for students and senior citizens, \$2.50 for children under age 12, with a 50-cent discount per ticket for groups of 10 or more and on Sunday for anyone with a church bulletin.

Reservations may be made by calling (502) 762-4288, or writing to the Department of Music, Murray State University, Murray, Ky., 42071. Proceeds from "Campus Lights" to into a music scholarship fund.

Commuter, Elizabethtown, Madisonville, Dawson Springs, Evansville, Henderson, Owensboro, Union City, Martin, Cairo, Carbondale, Metropolis, Senior Citizen News, C-J Features and Sunday Calendar

**News from
murray
state
university**

Johnny Miller
(502) 762-2197

26-6-85

1-14-85

MURRAY, Ky., Jan. 14 -- People who love classic Broadway musicals will find a smorgasbord in the 47th annual production of "Campus Lights" at Murray State University.

Scheduled Feb. 14-17 in Lovett Auditorium, the 1985 musical is based on a dozen popular Broadway shows. Numbers are taken from the late 1930s "Show Boat" to the recent "The Whiz," "Funny Girl" and "Annie."

"Music has always been the heart of 'Campus Lights,'" says director Ronnie Oliver Jr., a senior from Owensboro. "So the writers looked for a way to give the audience as much music as possible this year."

Oliver said 25 complete numbers will be performed. A sample of other Broadway shows covered includes "Annie Get Your Gun," "South Pacific" and "A Chorus Line."

A traditional boy-meets-girl story binds the music together. The main characters are "Kurt Allen," played by Keith Roberts of Madisonville Route 5, and "Anne Blake," Jennifer Beck of Calvert City.

"Anne" and "Kurt" meet at an audition and fall in love as they try for parts in a series of "Broadway shows." The competition spawns an inevitable spat about who has the most talent.

The cast includes a 42-member chorus, 20-piece band and production crew of about 25. The show, as always, is totally written and produced by students and sponsored by the two music fraternities -- Sigma Alpha Iota for women and Phi Mu Alpha Sinfonia for men.

-more-