



**MURRAY STATE**  
UNIVERSITY

**Murray State's Digital Commons**

---

Marshall Courier

Newspapers

---

5-15-1952

## The Marshall Courier, May 15, 1952

The Marshall Courier

Follow this and additional works at: <https://digitalcommons.murraystate.edu/mc>

---

### Recommended Citation

The Marshall Courier, "The Marshall Courier, May 15, 1952" (1952). *Marshall Courier*. 102.  
<https://digitalcommons.murraystate.edu/mc/102>

This Newspaper is brought to you for free and open access by the Newspapers at Murray State's Digital Commons. It has been accepted for inclusion in Marshall Courier by an authorized administrator of Murray State's Digital Commons. For more information, please contact [msu.digitalcommons@murraystate.edu](mailto:msu.digitalcommons@murraystate.edu).



# The Marshall Courier

Western Kentucky's Largest Weekly Newspaper — Benton and Marshall County's Home Newspaper

VISIT the State's Biggest  
Attraction... TVA'S  
Gigantic Kentucky Dam

Paid Circulation Sells — That Is The  
Kind This Newspaper Offers Customers

Benton, Kentucky, Thursday May 15, 1952

First In Advertising  
First In The Home, First In Reader Interest

Number 52

## 25-31 IS PROCLAIMED RECREATION WEEK

and to help acquaint others. A tour of Kentucky by about 25 out-of-state travel editors from midwestern newspapers has been scheduled for the week. The editors, coming on invitation of the Governor, will start in Louisville May 25 and end their tour in Frankfort the following Sunday. The tour will include the Mountain Laurel Festival at Pine Mountain State Park, Pineville, on Memorial Day and

visits to 10 other State and National parks. It will be sponsored by the State Chamber of Commerce. The week in Kentucky will be part of a national observation based on a proclamation by President Truman.

## Crop Prospects Reported Bright

Crop production prospects have brightened during the past three weeks to raise government hopes that this year's harvest of food and fiber crops may set a record after all.

A month ago prospects were not good because unfavorable weather had retarded planting. But a new crop survey made by the Agriculture Department yesterday said conditions have improved greatly and crops are now normal or advanced in most areas of the country.

A wheat crop which may be the second or third largest of record was said to be indicated. The winter wheat portion of the crop was forecast at 988 million bushels. An average spring wheat crop would give a total combined crop of about 1,293,000,000 bushels. Only in 1947 and 1948 were larger wheat crops harvested. The department said it appears likely farmers will plant a larger acreage to corn than had been indicated by a planting survey in March. The government has appealed for more corn to meet feed demands of an expanding industry.

## PERSONALS

M. B. Fiser, Route 6, was a visitor in Paducah Saturday. Mrs. Jack Perlman and mother, Mrs. J. L. Edwards, of Routes 7 and 4, were shopping visitors in Benton Monday.

## Partnership Protection WOODMEN OF THE WORLD LIFE INSURANCE SOCIETY

Offers You

- Legal Reserve
- Life Insurance
- Practical
- Fraternity
- Free Treatment for Tuberculosis
- Local Representative

District Manager

ROY E. HENSON

12th Street  
ARTELLE HALTOM, SEC.

Benton, Ky.

## VISITORS INSPECT COURIER PLANT



(Polaroid Photo By M. Wyatt)

INSPECTORS OF GOVERNMENT Generator Contract at the Tappan Store plant in Murray are shown above looking over specimens of type from Marshall Courier Linotype machines. Left is William E. Turner, U. S. Army Signal Corp Inspector, in charge of Army Inspection at the plant. Right, Van D. Hall, Chief Inspector of Company Inspection at O'Keefe-Merritt Co., Los Angeles, Prime Contractor for the Army contract.

## PENNSALT DECLARES 40-CENT DIVIDEND ON COMMON STOCK

The board of directors of the Pennsylvania Salt Manufacturing Company today declared a dividend of 40 cents a share on the common stock with a par value of \$10 a share, payable June 13, 1952, to share owners of record at the close of business May 29, 1952. Transfer books do not close.

At the same time the company reported that net earnings after federal income taxes for the first quarter of this year amounted to \$924,036, equivalent to 85 cents per share on the 1,087,446 shares of common stock outstanding. Net earnings for the same period in 1951 were \$1,300,734, equivalent to \$1.30 a share on the 999,035 shares of common stock then outstanding. Sales for the first quarter of 1952 were \$14,764,924, as compared with sales of \$12,432,886 in the first quarter of 1951.

## New 4-H Club Contest Begins

The seventh annual State 4-H Club Achievement Contest in agriculture and home economics has been announced by J. W. Whitehouse, 4-H Club state leader, and Barry Bingham, president of The Courier-Journal, The Louisville Times, and WHAS.

The contest is open to Kentucky 4-H Club boys and girls who are at least 15 years old and who have been in 4-H Clubs for a minimum of four years, including 1952. Previous winners are not eligible.

The contest is sponsored by the newspapers and radio station as a part of their farm-incentive program, which includes four other contests. For five consecutive years through 1950 this program won recognition in the public service division of a national newspaper competition conducted by Editor and Publisher, a newspaper journal.

Four cash prizes are offered in the agriculture section for boys and girls and four in the home-economics section for girls. First prize in each division is \$75, second prize \$50, 3rd \$25, and fourth \$12.50.

In addition to cash awards winners and their families will be given an all-expense paid trip to Louisville to the annual Farm Awards Luncheon next year as guests of the newspaper-radio sponsors.

Winners are selected on the basis of projects carried, leadership shown, and participation in various activities within the club and in the community and county.

Record books on projects in 1952 and previous years, a narrative report, and a complete record of accomplishments in a standard report form are required.

These must be turned in at 4-H district meetings next October.

Grand prize winners in 1951 were Mary Ann Hurlage, Pleasant Ridge Park, and Dan E. Turner, Lancaster.

Circulars on this year's contest are being sent to all home-demonstration agents and coun-

## Fishing License Sales Up 315,000 In 8 Years

FRANKFORT, Ky., May 15 — A look at the increased sale of Kentucky fishing licenses is solid proof that the state is fast becoming recognized as the land of opportunity for the fisherman.

Figures released today by the Division of Game and Fish show an increase of more than \$15,000 in the license sale in an eight year period. The increase is considerably above the national average and an all-time high is expected this year.

In 1944, 75,061 licenses were issued, and by last year the figure had jumped to 390,529. Other years in the period and the number of licenses sold: 1945-105,939; 1946-197,419; 1947-227,997; 1948-295,489; 1949-324,806 and 1950-354,153.

Bang's disease of cattle causes breeding difficulty and premature born calves. The drinking of milk from diseased cattle causes undulant fever in humans. This is a disease to be dreaded. We are very fortunate that cattle can be treated and determine the diseased animals. Young calves may be vaccinated for the control of Bang's.

Dr. A. S. Barnes, district Supervisor of the Bureau of Animal Industry, Frankfort, Kentucky, assisted with the meeting. He showed a colored picture entitled "The Triple Threat". Dr. Sam Henson discussed the effect of the disease on humans. A county wide testing and vaccinating program will control the disease. The public attended in cordial numbers.

Mr. and Mrs. George Locker and son, Route 4, were visitors in Benton Saturday. Harve Darnell, of Route 1, was a shopper in Benton Saturday.

## Control Of Bang's Disease Discussed At Meeting Here

Control of Bang's disease of cattle will save Marshall County farmers thousands of dollars each year. A public meeting was held Monday night, May 12, in the Courthouse at Benton for the purpose of discussion of its control and eradication, according to J. H. Miller, County

## Wilson's Book Store

Office Furniture Books - Music  
Office Supplies Fountain Pens  
Duplicators Greeting Cards  
306 Broadway Paducah, Ky.

## HURLEY & RILEY REALTY COMPANY

1108 1-2 Main Street BENTON, KENTUCKY Phone 5721  
WE SELL — RENT — TRADE  
REAL ESTATE OF ANY NATURE  
NOTHING TOO LARGE OR SMALL  
List Your Property With Us  
We Have Farms — City Property  
and Lake Property  
BE SURE AND SEE  
HURLEY & RILEY REALTY CO.  
BENTON, KENTUCKY

## Drive It Yourself!

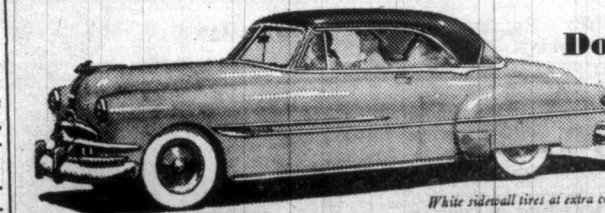


## A Spectacular Performer—A Wonderful Value!

Come in, get behind the wheel of a new Dual-Range\* Pontiac and watch all your driving troubles fade away! In Traffic Range you'll ease through the toughest traffic so nimbly, so easily, so smoothly you'll hardly know there's another car around.

On the open road, you're in Cruising Range—so smooth and quiet it's almost like coasting. In Cruising Range you actually reduce engine revolutions as much as 30 per cent! No wonder you save gasoline every hour you drive.

Come in and see this great new Pontiac—America's lowest priced straight-eight; the lowest priced car with Hydra-Matic Drive. Let us show you the wonderful deal we can make that will put you behind the wheel of your own new Pontiac!



Dollar for Dollar you can't beat a

## Pontiac Roberts Motor & Implement Co.

100 West 12th St.

Benton, Ky.

## Plan For The Future

## Or A Plan Of The Present



Of The Belmont for furniture. There is ample space for a breakfast table in the kitchen. Storage space is also plentiful. The bedrooms have closet space. There is a coat closet in the front entrance, also general and linen closets in the hall, making a total of 6 closets.

Cabinets in the Belmont's modern kitchen are efficiently arranged with the sink under the window, the range next to the living room door and the refrigerator at the opposite end of the room.

Exterior walls of The Belmont are frame with siding or shingles. Concrete blocks can be substituted if desired. Asphalt shingles cover the roof.

Overall dimensions of The Belmont are 39 feet by 26 feet with a full basement. The area of The Belmont is 761 square feet with 15,372 cubic feet.

For further information about THE BELMONT, write the Small House Planning Bureau, St. Cloud, Minn.

we hope we can be of service to you on plans for a New home. We Invite you to discuss your plans with us.

## QUALITY BUILDING MATERIALS

## BUILD THROUGH F. H. A. Treas Lumber Co.

from Foundation to Roof — We Have It  
Benton, Ky.

Phone 2301



JOIN THE REST OF THE NATION... IN A  
**KENTUCKY VACATION**

YOUR STATE PARKS OFFER...

**FISHING**

**HIKING**

**BOATING**

**RIDING**

**PICNICKING**

**GOLFING**

**SWIMMING**

Take your choice..

**CABINS**

**OR ROUGH IT**

**LODGES**

Take a big trip without big-trip expense. Plan now to have your summer vacation or outing at one of Kentucky's newly developed State Parks. Easy access over good roads. Modern accommodations plus a range of outdoor activities make a Kentucky vacation a must for all the family. Send today for complete information.

**MAIL TODAY FOR FREE LITERATURE**

DIVISION OF PUBLICITY  
Frankfort, Kentucky

Please rush free complete information about rates, special features and accommodations at Kentucky State Parks.

NAME \_\_\_\_\_  
ADDRESS \_\_\_\_\_  
CITY \_\_\_\_\_ STATE \_\_\_\_\_

## Church Programs

**Brewers Circuit**

B. J. Barren, Pastor  
Jereys M. E. Church—  
Fourth Sunday morning at 10 o'clock.  
First Sunday evening at 7 o'clock.  
Sunday School each Sunday  
Oak Level M. E. Church—  
morning at 10 o'clock.  
Second Sunday morning at 11 o'clock.  
Third Sunday evening at 7 o'clock.  
Sunday School each Sunday  
morning at 10 o'clock.  
Pleasant Grove M. E. Church—  
First and third Sunday morning at 11 o'clock.  
Second and fourth Sunday evenings at 7 o'clock.  
Sunday School each Sunday morning at 11 o'clock.

**BENTON CIRCUIT**

Mt. Carmel  
Sunday School each Sunday morning at 10 o'clock.  
Preaching every first Sunday at 11 a.m.  
Church Grove  
Sunday School every Sunday at 10 a.m.  
Preaching 2nd Sunday morning at 11 o'clock, and 3rd and 4th Sunday at 7 p.m.  
Maple Spring  
Preaching 3rd Sunday at 11 a.m. and 1st Sunday at 7 p.m.  
Prayer service evening at 7:00 p.m.  
Driensburg  
Preaching 4th Sunday at 11 a.m.; second Sunday at 7 p.m.; Sunday School 10 a.m.  
WCS meets monthly.  
The public is cordially invited to attend all services.

**FIRST MISSIONARY BAPTIST CHURCH**

J. Frank Young, Pastor  
Sunday School, 9:30 a.m.  
Kenneth Nichols, Supt.  
B.T.U. 6:00 p.m.  
Homer Paw, Director.  
Worship Services every Sunday at 10:45 a.m. and 7:00 p.m.  
Mid-week Prayer Service 7:00 p.m.  
The public is cordially invited to attend these services.

**FIRST CHRISTIAN CHURCH**

Rev. Bill Williams, Pastor  
Joe Williams, Supt.  
Sunday school 10:00 a.m.  
Worship Service 11:00 a.m.  
You are cordially invited to come and worship with us.

**BETHLEHEM BAPTIST CHURCH**

Rev. A. R. Adams, Pastor  
Sunday School — 10:00 a.m. each Sunday.  
Prayer Meeting — 7:45 each Wednesday evening.  
First and third Sundays.  
Sunday School Supt. — Ozley Powell.  
Choir Director—Willie Henson  
Pastor—A. R. Adams.  
The public is cordially invited to attend these services and worship with us.

**NEW ZION CHURCH**

Edward Crowell, pastor.  
Harl Urey, S.S. Supt.  
Sunday School, 10:00 A. M.  
Preaching at 11 A. M., and 7 P. M. each Sunday.  
Prayer meeting each Wednesday night at 7:00 o'clock.

**LAKEVIEW BAPTIST CHURCH**

(James C. Asbridge, Pastor)  
Roy Vasseur, Supt.  
Sunday school 9:45 a.m.  
Worship Service 11:00 a.m. and 7:00 P. M.; B.T.U. 6:00 P. M., each Sunday.  
Paul Gregory, Director.  
Prayer meeting Wednesday evenings 7:00 o'clock.  
You are cordially invited to attend all these services.

**First Methodist Church**

Rev. Harry Williams, Pastor  
Joe Coulter, Gen. Supt.  
Sunday school at 9:45 A. M.—  
Morning worship Service at 10:45 A. M., morning worship 11:00 A. M.—Sermon by the Pastor.  
Everyone welcome.

**HARDIN METHODIST CHARGE**

Rev. Max Sykes, Pastor  
Hardin: Sunday 10:00 a.m. every Sunday. Worship third Sunday at 11:00 a.m.; First Sunday at 7:00 p.m.  
Dexter: Sunday school 10:00 a.m. every Sunday except third Sunday and Worship at 11:00  
Olive: Sunday school 10 A. M.

**HARDIN BAPTIST**

(George E. Clark, Pastor)  
Sunday School 10 A. M.  
Morning Worship 11 A. M.  
Evening Worship 7:30 P. M.  
Everyone invited to attend all services.

**CHURCH OF CHRIST**

Benton M. Carman, Minister.  
Sunday School 10:00 a.m.  
Preaching and worship 11:00 a.m. and 7:00 p.m. each Sunday.  
A cordial welcome is extended.

**Olive Baptist Church**

(Willie Johnson, Pastor)  
Preaching services each Sunday at 11:00 A. M., and 7:00 P. M.  
Sunday school 10 A. M.  
Prayer meeting Wednesdays at 7:00 P. M.  
Everyone Welcome

**CHURCH OF CHRIST**

(Paul J. Waller)  
Bible study 10:00 A. M.  
Worship 11:00 A. M.  
Bible Study Wednesdays 7 P. M.  
Everyone invited.

**BETHEL BAPTIST CHURCH**

Max Sledd, Supt.  
On Tatumville old Birmingham road.  
John Stringer, pastor.

Services each Sunday at 1:00 o'clock.  
Sunday School 10:00 a.m.

**HARDIN BAPTIST**

(George E. Clark, Pastor)  
Sunday services: 10:00 A. M.  
Sunday school 11:00 A. M.  
Preaching Service 11:00 A. M.  
2nd - 4th Sundays 7:30 P. M.  
Prayer meeting Wednesday night at 7:30 P. M.  
8 p.m. Prayer meeting each Wednesday at 7 p.m.

**Church of Christ**

(J. Woody Stevill)  
Bible Study 10:00 A. M.  
Worship 11:00 A. M.  
Ladies' Bible Class, Wednesdays 2:30 P. M.  
Prayer Meeting Wednesdays at 7:30 P. M.  
Come, let us Reason Together.

**PENTECOSTAL HOLINESS CHURCH**

On Maple and Seventh St.  
Rev. E. B. Proctor, Pastor  
Sunday School - 2 p.m.

Worship Service — 3 p.m.  
Prayer Service Tuesday at 7:30 p.m.

**BRIENSBURG BAPTIST CHURCH**

T. L. Campbell, Pastor  
Sunday School at 10:00 a. m.  
Harry T. Chup, Gen. Supt.  
Training Unions 6:00 p.m.  
Paul Clayton, director.  
Preaching Services 11:00 a.m. and 7:00 p.m.  
Wednesday evening Prayer Services at 7:00 p.m.

**FIRST BAPTIST CHURCH**

(E. D. Davis, Pastor)  
Jimmie Lester, Supt.  
Sunday school, 9:45 A. M.  
Morning worship, 10:45 A. M.  
Training Union 6:30 P. M.  
Evening worship, 7:30 P. M.  
Prayer service, Wednesdays at 7:00 P. M.  
The public is cordially invited to attend all the services of the church.  
**PRESBYTERIAN CHURCH**  
Rev. Raymond A. Long, Pastor  
Richard Rudolph, Supt.  
Sunday School 10:00 a.m. Worship 11:00 A. M.

C. Y. F. 6:30 P. M.  
Evening services at 7 P. M.  
The public is welcome to each and every service.

**LIST DRUG STORE**

PADUCAH, KY.

# You Can Get A Better Deal If YOU Trade For Hotpoint

Appliances...for Pennies a day - - - -  
You can have that Dream Kitchen or Laundry

FOR ONLY PENNIES A DAY YOU CAN OWN A HOTPOINT REFRIGERATOR OR HOME FREEZER

Hotpoint Refrigerators and Home Freezers provide so much cold storage space, you can shop less often, store more, avoid bad weather shopping. Why don't you see the Hotpoint line.

REFRIGERATORS FROM \$219.95 to \$509.50 HOME FREEZERS From \$429.95 to \$659.95

FOR ONLY PENNIES A DAY YOU CAN OWN A HOTPOINT RANGE, DISPOSAL or DISHWASHER

Ease and efficiency can be yours when you do your cooking on a Brilliant Hotpoint Electric Range. Instant Heat Calrod Units give intense heat for fast starting.

RANGES FROM \$169.95 to \$449.95

DISPOSALS \$137.66

A big part of your kitchen time is spent in cleaning up the mess and fuss of preparing food. Dishwashing and garbage removal are two of the most disliked tasks. Why struggle with this endless task? Come in and look over the Hotpoint Disposal and Dishwasher.

DISHWASHERS \$323.68 to \$478.68

FOR ONLY PENNIES A DAY YOU CAN OWN A HOTPOINT AUTOMATIC WASHER, DRYER or WATER Heater

No longer does "washday" mean time spent in damp unpleasant surroundings. Bring the sunshine into your home with this automatic washer and dryer by Hotpoint — Make your washday pleasant with this Harmony Duo.

AUTOMATIC WASHERS \$339.95 DRYERS — \$307.19

Hotpoint Automatic Electric Water Heaters. Eight models from 30 to 82 gallons. Both table top and round models offer magic circle heat of pressurized calrod units. Quicker, easier, surer and plenty of hot water when you want it.

WATER HEATERS From \$139.95 to \$199.95

Get Our Prices Before You Buy — It will Save You Money.

**ERVIN POE PALMA, KY**

**News of Our**

be Lovett, of  
ing the Sat-  
anton.  
Mr. and  
visited 3  
daughter,  
in Colum  
Grace Cathey  
Ruth Cath-  
te 1, were  
Saturday.  
Will R.  
was a Se  
or in Be

**CONFESSION**

**HAVE IN US**

**OUR**

**WORLD OFFERS YOU**  
THING DILIGENT  
RTS AND ABILITIES  
OBTAIN.  
E WELL!

**KITCHENS BA**

**Your Telephone**

When  
A  
YOU  
ABOUT  
MOTH  
DOING

**RS and anxiety give w**  
appiness, you're grateful  
ther, that you got so quick

**HONE convenience is wit**  
hners today than ever  
bled the number of Dixie  
ears!

**DD thing the South's tele**  
ast. A good thing for our  
industry... for homes,  
Bell Telephone and Tele

years of phenomenal  
for new telephones,  
0 applications have  
ken care of—more  
of all applications

**SERVICE—LOWEST P**



Benton, Kentucky Thursday  
 P. 6:30 P. M.  
 ing services at 7 P. M.  
 public is welcome to each  
 service.

**CONFIDENTIAL**  
**DOCTORS**  
**HAVE COME TO US!**

doctor knows best what to do in  
 best how to accurately fill his  
 ed pharmacists are always at your

**IST DRUG STORE**  
 PADUCAH, KY.

**et A Better**  
**For**

**your Telephone worth?**  
**When You Need Advice!**

**part of your kitchen**  
 spent in cleaning  
 mess and fuss of  
 ing food. Dishwash-  
 a garbage removal  
 o of the most dis-  
 tasks. Why struggle  
 his endless task?  
 n and look over the  
 at. Disposals and  
 other.

**ER Heater**

Hotpoint Automatic Elec-  
 tric Water Heaters. Eight  
 models from 30 to 82 gal-  
 ons. Both table top and  
 round models offer magic  
 circle heat of pressurized  
 sealed units. Quicker, eas-  
 ier, surer and plenty of  
 hot water when you want  
 it.

**WATER HEATERS**  
 From  
 \$139.95 to \$199.95

**ave You Money.**

**PALMA, KY.**

Courier Benton, Kentucky Thursday May 15, 1952

# News of Our Neighbors

Mr. and Mrs. Floyd Roberts visited the family of their daughter, Mrs. Ben Humphreys, in Columbus, S. C., recently.

Will R. Stratton, of Route 1, was a Saturday business visitor in Benton.

Mr. and Mrs. Roy Houser and Loren Houser, Route 3, were business visitors in Benton Saturday.

Mr. and Mrs. H. Clay Henson, of Route 4, were visitors in Benton Saturday.

Mr. and Mrs. Roy Houser and Loren Houser, Route 3, were business visitors in Benton Saturday.

Mr. and Mrs. Roy Houser and Loren Houser, Route 3, were business visitors in Benton Saturday.

Mr. and Mrs. Roy Houser and Loren Houser, Route 3, were business visitors in Benton Saturday.

Mr. and Mrs. Roy Houser and Loren Houser, Route 3, were business visitors in Benton Saturday.

Mr. and Mrs. Roy Houser and Loren Houser, Route 3, were business visitors in Benton Saturday.

Mr. and Mrs. Roy Houser and Loren Houser, Route 3, were business visitors in Benton Saturday.

Mr. and Mrs. Roy Houser and Loren Houser, Route 3, were business visitors in Benton Saturday.

Mr. and Mrs. Roy Houser and Loren Houser, Route 3, were business visitors in Benton Saturday.

Mr. and Mrs. Roy Houser and Loren Houser, Route 3, were business visitors in Benton Saturday.

Mr. and Mrs. Roy Houser and Loren Houser, Route 3, were business visitors in Benton Saturday.

Mr. and Mrs. Roy Houser and Loren Houser, Route 3, were business visitors in Benton Saturday.

Mr. and Mrs. Roy Houser and Loren Houser, Route 3, were business visitors in Benton Saturday.

Mr. and Mrs. Roy Houser and Loren Houser, Route 3, were business visitors in Benton Saturday.

Mr. and Mrs. Roy Houser and Loren Houser, Route 3, were business visitors in Benton Saturday.

Mr. and Mrs. Roy Houser and Loren Houser, Route 3, were business visitors in Benton Saturday.

Mr. and Mrs. Roy Houser and Loren Houser, Route 3, were business visitors in Benton Saturday.

Mr. and Mrs. Roy Houser and Loren Houser, Route 3, were business visitors in Benton Saturday.

Mr. and Mrs. Roy Houser and Loren Houser, Route 3, were business visitors in Benton Saturday.

Mr. and Mrs. Roy Houser and Loren Houser, Route 3, were business visitors in Benton Saturday.

Mr. and Mrs. Roy Houser and Loren Houser, Route 3, were business visitors in Benton Saturday.

Mr. and Mrs. Roy Houser and Loren Houser, Route 3, were business visitors in Benton Saturday.

Mr. and Mrs. Roy Houser and Loren Houser, Route 3, were business visitors in Benton Saturday.

Mr. and Mrs. Roy Houser and Loren Houser, Route 3, were business visitors in Benton Saturday.

Mr. and Mrs. Roy Houser and Loren Houser, Route 3, were business visitors in Benton Saturday.

## THE BIBLE SPEAKS

BY DR. KENNETH J. FOREMAN

SCRIPTURE: Exodus 20:12; Mark 10:13; Luke 24:42; John 19:26-27.  
 DEVOTIONAL READING: Proverbs 4:1-10.

### House or Home?

Lesson for May 15, 1952

ANYBODY with pencil and paper can count the number of houses on a street. Counting the houses is something else. Anybody can sell you or build you a house, any kind you can pay for; but no one can sell you a home. A house is a house the minute it is finished. A home never is finished, it goes on being built year after year.

Edgar Guest said what everybody knows: "It takes a heap o' livin' to make a house a home." A house begins to be a home when two people move in who live each other; but it is much more of a home after the grandchildren start coming back for visits.

A house may be running down while a home is growing better and better. Besides, a home does not necessarily have to have a house.

Does the Family Live There? ALL of us would rather have a home than a house if we had to choose. Whatever we live in—a separate house, a "flat" or "duplex," an apartment, a trailer, or what not—it can become a home—IF.

A house becomes a home in the first place only if the family live there. If all they do is to come in when there is nowhere else to go; if they seldom see one another and then almost by accident; if the place is only a lunch-counter, a rooming-house, a place to be fed and to stay in when it rains; then it is no home, it is only a house.

Animals don't have homes; they have kennels, barns, styes, stables. They can have very expensive stables too, as you can find around the Bluegrass country. But no one has ever succeeded in making a home for horses because horses have no family life, they are quite content if the roof doesn't leak and if there is enough to eat and a clean place to lie down in.

People have minds and hearts and souls, and they can know comradeship and unity such as are completely beyond the reach of even the most intelligent of animals. Living is much more than existing; and it takes a heap of living, not just existing, to make a home.

Who Runs the Place? A HOUSE is a home if it is well run. This does not refer to paying the bills, keeping up the repairs, and so forth. A house is a home only if it is in charge of those who have the most wisdom and can best bear responsibility.

The Bible comes to us from a time and place in history very different from ours; so that we are not wise if we take just any family in the Bible and use it as a model. Solomon had 700 wives and 300 minor wives or "concubines"; Abraham had at least three.

We have progressed (thanks to Christianity) past these things. But still the Bible does give us some indispensable guidance in this matter of the home. And one of the points you will find in both Old Testament and New is that the parents ought to have the place of authority in the home—that is, they are expected to run it.

Some families aren't run by any one; they are pure anarchies, continual rumpus and riot. Some families are run by the children, which means they are run by those with least sense and experience. "Honor thy Father and thy Mother" also means, "Father and Mother, be honorable."

Are Children a Nuisance? A HOUSE IS A HOME if children are expected, welcomed and loved. It is not a home if children are regarded either as nuisances, as items of expense, or perhaps shut out entirely.

Now there are true homes which are of necessity childless; but a house where children would not be welcome and where they are not loved, is no home.

The parents ought to be in charge, by all means. But they ought not to be tyrants, dictators. They run the home for the children's benefit, which is quite a different thing from letting the children run it as they please. Eventually, if the parents are wise, they will send out into the world young people who have been taught to stand on their own feet. They will cut the apron-strings. They will train their children so that they will be capable of founding and living happily in homes of their own.

(Copyright 1951 by the Division of Christian Education, National Council of the Churches of Christ in the United States of America. Released by WPA Features.)

## Veep To Speak At Jefferson - Jackson Day Dinner May 17

Vice President Alben W. Barkley will fit a key piece into the Presidential race puzzle when he makes the principal speech in Louisville May 17 at the Jefferson-Jackson Day dinner.

The Veep, as he is known to millions of Americans, has been growing steadily in popularity for more than two decades. It is a certainty that matters of more than state-wide importance will be included in his address.

Vice-President Barkley will be presented by Governor Lawrence W. Wetherby and will be preceded at the speaker's stand by U. S. Senator Earle C. Clements and Tom Underwood. Mayor Charles P. Farnsley will welcome his distinguished fellow Democrats to Louisville and Judge Jess Lindsey will preside as toastmaster.

While little has been said of the Presidential question by the Vice President, astute political observers rate this speech the most logical occasion for an announcement of his future plans. News gathering agencies are placing particular emphasis upon the talk. If Vice President Barkley declares himself into the 1952 Presidential race, the spotlight will turn full focus upon Kentucky and the possible effect this declaration will have upon the chances of other candidates. To date all queries have been turned aside with the deft good humor that characterizes Kentucky's most famous son.

May 17th may settle the issue one way or another.

## PERSONALS

H. S. Cathey, of Route 5, was a business visitor in Benton Saturday.

Solon Gipson, of Route 2, was a business visitor in Benton Saturday.

Mr. and Mrs. M. B. Fiser, of Route 6, were Saturday visitors in Benton.

Mr. and Mrs. Reid Walker and Miss Ollie Walker, of Rt. 5, were shoppers in Benton Saturday.

A. D. Thompson, of Rt. 1, was a visitor in town Saturday.

Loyd Collie, of Route 5, was a business visitor in Benton Saturday.

Clovis Chiles, of Route 7, was a visitor in Benton Saturday.

Enos Darnell, Route 5, was a business visitor in Benton Saturday.

Mr. and Mrs. Ezra Lents, of Route 4, were visitors in Benton Saturday.

Eugene Anderson, of Route 1, was a visitor in Benton Saturday.

Robert Turner, a resident of Route 5, was a Saturday business visitor in Benton.

W.R. Stratton, of Route 1, was a business visitor in town Saturday.

Mrs. Louie Duncan and children, Mrs. Winona Beard and Mrs. Myrtle Beard have returned home after a vacation in Tampa, Florida.

Mrs. Artie Hale is ill at her home in the Cole's addition community.

Mr. and Mrs. H. Clay Henson, of Route 4, were visitors in Benton Saturday.

Oscar Lovett, of Route 4, was in Benton Saturday.

Mr. and Mrs. Roy Houser and Loren Houser, Route 3, were business visitors in Benton Saturday.

LOOK! Look at the numerals in the upper left hand corner of page one and if they read 4-1-52 your subscription to the Marshall Courier expired the first of April. In order for you to not miss a single issue of the Marshall Courier drop by our office or mail your renewal at once!

WE WISH YOU Success...

YOUR EFFORTS AND ACHIEVEMENTS HAVE MADE US PROUD TO KEEP GOING 1952

PEERLESS CLEANERS

CONGRATULATIONS 1952 GRADS

FUTURE CLASSES MIGHT WELL STRIVE TO MATCH YOUR RECORD...

MAY TODAY'S SUCCESS BE ONLY THE FOUNDATION OF A BOUNTIFUL FUTURE!

Crawford - Fergerson

LENEAVE Service Station

Best Wishes CLASS OF 1952

Add to your credit our congratulations for a job well done... 1952

Good Luck 1952

KINNEY MOTOR CO.

BUTLER'S GROCERY

1952

1952

1952

1952



# WE'RE PROUD OF OUR RECORD

## AS BENTON and MARSHALL COUNTY'S LICENSED PLUMBING and HEATING CONTRACTORS

### No Job Too Large -- Or Too Small

BELOW ARE SOME OUTSTANDING JOBS COMPLETED IN THE LAST 2 YEARS AND NOW UNDER

Dentists' Building  
Benton, Ky.  
Plumbing & Heating

McCLAIN CLINIC  
Benton, Kentucky  
Plumbing

Calvert City Heights  
plumbing, heating and  
water distribution  
30 Units Completed  
18 new units to start

Kentucky Dam  
AIRPORT  
Gilbertsville Ky.  
Plumbing and  
Water Distribu-  
tion.

PENNSALT — new  
addition in Calvert  
City.  
Plumbing — Heating  
Process Piping

Long Concrete Works  
Calvert City, Ky.  
Process Piping

NICHOLS Tourist  
COURT  
Plumbing

Benton High School  
Home Ec Dept,  
Plumbing & Heating

Air-Reduction  
Sales Co.  
Calvert City  
Plumbing

KY. DAM Bath House  
And 10 Cottages At  
Ky. Dam Park  
Plumbing

Lower Boat  
BASIN  
G'ville, Ky  
Plumbing

FORRESTER'S  
Tourist Court  
Plumbing

Big Bear Camp  
New Addition  
Plumbing

Pittsburgh Metallurgical  
Calvert City, Ky  
Plumbing & Heating  
Process piping and air con-  
ditioning

TREAS  
Lumber Co.  
Plumbing

And Hundreds of Residential Plumbing and Water Systems throughout Marshall County!  
MANY OTHER LARGE JOBS UNDER CONSTRUCTION

DISTRIBUTORS OF THE FOLLOWING NATIONALLY KNOWN LINES

Fairbanks-Morse Hot Water Heaters  
FARM WATER SYSTEMS

CRANE - STANDARD - KOHLER  
PLUMBING and HEATING Systems

COLEMAN FLOOR FURNACES  
AND SPACE HEATERS

HEATMASTER - RE  
FAIRBANKS - MORSE H

## REMODEL-REPAIR

Your  
Plumbing  
And Heating

## FOR BETTER LIVING

# MILLER-JOHNSON COMPANY

Phone 4482 Benton, Ky.

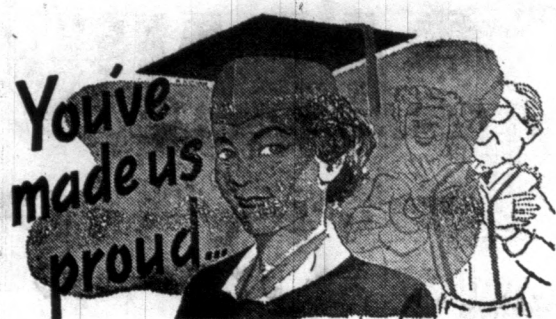
FREE ESTIMATES

LICENSED CONTRACTORS

Phone 711



# Congratulations To The Grads Of Benton And Marshall County



## Local News of Our Neighbors

Little Miss Cathy Hule, of St. Louis, has been visiting her grandparents, Mr. and Mrs. Max Petway here for several days.

Mrs. S. E. Adams, of Detroit, visited her twin sister, Mrs. Ted Crouch and Mr. Crouch on Benton Route 4 last week.

Mrs. Thomas Holland spent the past week-end in Nashville, Tenn., with her husband, who is confined to a hospital there.

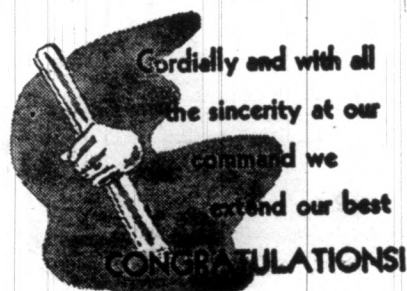
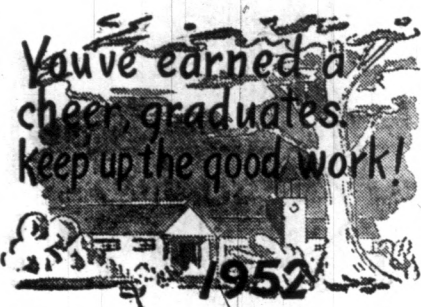
Mr. and Mrs. Carl Krebs, and Mr. and Mrs. Buddy Blake, of Louisville, are spending a weeks vacation on Kentucky Lake.

Mrs. Krebs is the former, Miss Dixie Eley of this city.

Mr. and Mrs. George Edwards, Hopkinsville, Ky., are spending several days with Mr. Edwards' mother on Rt. 5, who has been in ill health recently.

Mrs. Cliff Hatcher and daughter, Ann Taylor, of Madisonville, were week-end guests of her mother, Mrs. F. E. Wyatt here.

Mr. and Mrs. Wayne Burnham and daughter, Sheila, of Kevil, Ky., visited Mrs. Burnham's mother, Mrs. Stella Foust during the past week-end.



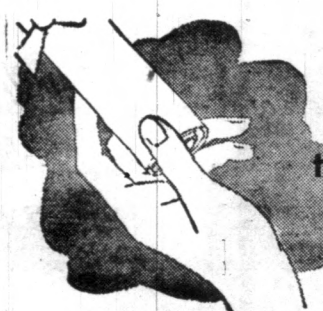
SOLOMON · McCALLUM ·  
Insurance Agency

## Congratulations

## Linn Funeral Home

ONE HILL, Chairman  
Brien, Vice-chairman  
Mobley  
Ivey  
HOLLAND ROSE Supt.  
Eura Mathis  
Della Sirls, Sec'y.

Marshall County Bd. Of Education

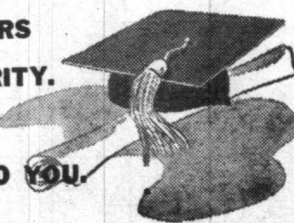


The world and the  
times are waiting for  
your achievements.



WE ARE TRULY PROUD  
OF THE KNOWLEDGE  
YOUR EFFORTS  
HAVE EARNED

YOU GRADUATE  
WITH HONORS  
AND MATURITY.  
CONTINUED  
SUCCESS TO YOU.



## BANK OF BENTON

Member F. D. I. C.

## BANK OF MARSHALL COUNTY

Member F. D. I. C.

RD  
S  
ING

H

OW UNDER CON

am  
Ky.  
Marian  
BOAT D  
Gilbertsville  
Plumb



Cherokee  
Bath H  
Eggners F  
Plumb

Lower Boat  
BASIN  
G'ville, Ky  
Plumbing

OWN LINES  
HEATMASTER - REAR  
BANKS - MORSE Hot W  
ER LIVING

ANY

Phone 711 Cal

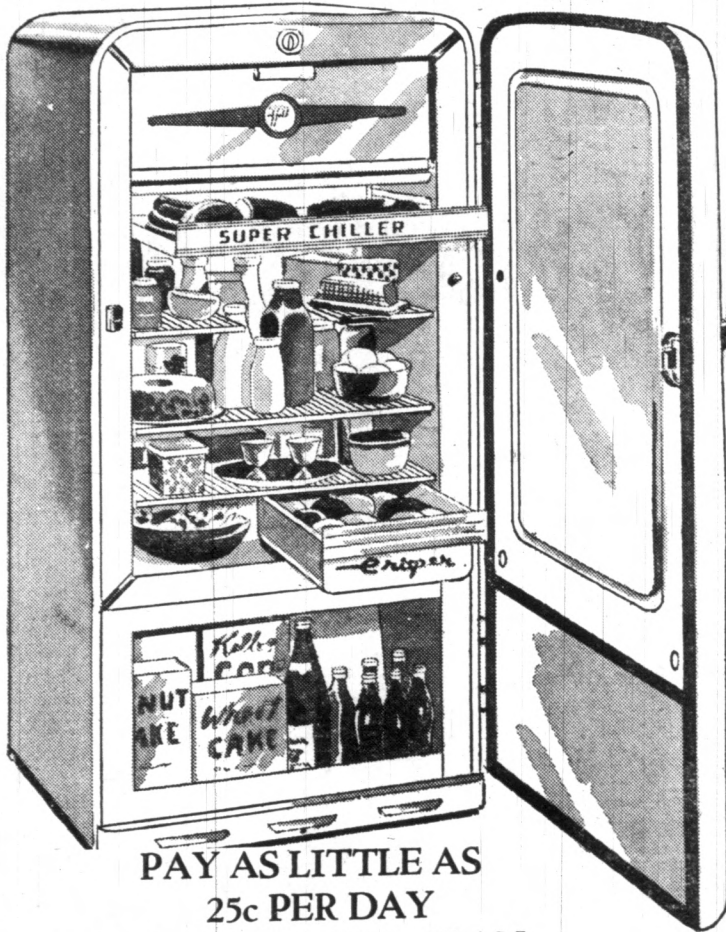


**Paducah**  
Dry Goods Co.  
Home Furnishings Store

**NOW'S THE TIME  
TO BUY!**

Credit Restrictions  
Removed

Once again—you can buy on easy, economical credit plans! All famous brands—TAKE UP TO 2 Yrs. TO PAY.

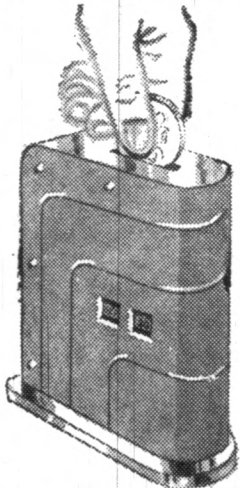


PAY AS LITTLE AS  
25c PER DAY  
ON OUR METER PLAN

**NOW... NO  
MONEY  
DOWN**

7-Cu. Ft. Plymouth  
**REFRIGERATOR**  
**\$189<sup>95</sup>**

- 13.5 Square Ft. Shelf Area
- 39 lb. Frozen Food Storage
- Super Chiller Drawer
- 7-Point Cold Control
- Hermetically Sealed Tecumseh 1-8 H. P. Motor



**OUR NEW METER PLAN  
MAKES IT EASY TO BUY!**

Use our meter plan! Just put a coin in ... and your refrigerator is working! You can save more than it costs you, on food! Protect your family's health ... have comfort and convenience in the days ahead!

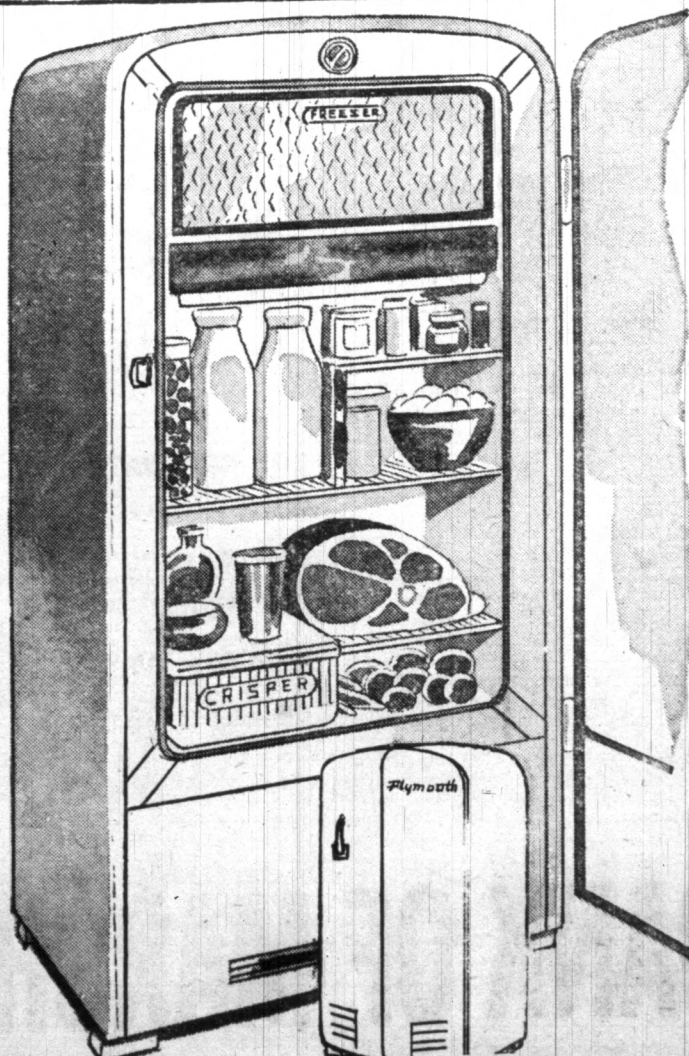
Roomy 9-Cu. Ft.  
Plymouth

**REFRIGERATOR**  
**\$239<sup>95</sup>**

- 52-Lb. Food Freezer
- Vegetable Crisper
- All Porcelain Interior
- 5-Year Warranty
- Hermetically Sealed Motor

Open Evenings by Appointment  
Phone 4466 - Paducah, Ky.

Open Friday Till 9:00 P. M.;



Saturday Till 5:30 P. M.

**Ideal Can For Feed**



It takes a farmer to discover the many uses of today's household items. For example, this sturdy 20-gallon galvanized refuse can—a product of Wheeling Corrugating Company—makes an ideal rodent-proof and moisture-proof storage container for feed. It takes 100 pounds of feed easily and has drop handles on the sides for convenient carrying.

STATE DIRECTOR OF  
PUBLICITY VISITS COURIER  
OFFICE SATURDAY

Mack Sisk, former secretary to Governor Wetherby, who is now Director of Publicity for the State of Kentucky, visited the Marshall Courier office Saturday of the past week.

Mr. Sisk spent several days at Kentucky Dam State Park.

**PERSONALS . . . . .**

Mr. and Mrs. Alvie Henson, of Route 4, were among the Saturday visitors in town.

Mr. and Mrs. Roy Cox, of Gilbertsville Route 1, were visitors in Benton Saturday.

Jim Frank Brown, of Route 1, was a business visitor in town Monday.

Mr. and Mrs. Dan Nelson, of Detroit, visited relatives and friends in Benton during the past two weeks.

Jackson Jones is able to be back in his place of business at the Benton Stand, after having been a patient in the Murray hospital for several days.

Mr. and Mrs. A. J. Perlman and son, George Frank, and Mrs. J. L. Edwards, of Routes 7 and 4, will leave Friday for Columbia, S. C., to visit the family of a brother of Mr. Perlman, Capt. Sam Perlman. They expect to visit in Florida before returning home.

Dolly Myers is able to be back at work at the Myers-Elkins grocery, after an absence caused by illness during which time he underwent surgery at the Mayfield hospital.

Mr. and Mrs. Wesley Stone, of Route 3, were Saturday visitors in Benton.

Mrs. Loyd Holley has purchased the Buster Farley residence in Benton and has moved there from Route 5. Mr. and Mrs. Robert Poague and daughter will reside with her.

Mr. and Mrs. Allen Fleming and daughter, Judy, were visitors in Mayfield Sunday.

Allie Johnston, of Calvert City Route 2, was a business visitor in Benton Monday.

**Calvert Theatre**

Fri. and Sat. May 16-17



Cartoon and Serial

Sun. and Mon. May 18-19



Cartoon and News

Wed. and Thurs. May 21-22



Color Cartoon

The Marshall Courier Benton, Kentucky Thursday

Mrs. Ether Ross and Mrs. Inell York, of Route 5, were Monday shopping visitors in town.

Galen O. Pace, of Hardin, was a business visitor in Benton Monday.

Jack Henton, pastor of the Oak Grove M. E. church near Jack-

**PENNEY'S**  
ALWAYS FIRST QUALITY  
PADUCAH  
Ky.

1952 SUMMER

**CARNIVAL**

prints 'n' plains 'n'  
woven patterns  
...all sorts of  
smart new  
cottons in our  
wonderful  
Carnival  
collection!



**Cottons...  
Cottons...  
COTTONS**



**AT PENNEY'S IN PADUCAH**

**Let's Get Acquainted**

N. POLICE CHIEF



Neal Owens  
ote: Beginning 'th  
S GET ACQUAINT  
a weekly feature  
or Benton and Ma  
ty can better kno  
sials and busin  
week an official  
an or woman w  
ed to you. It is o  
in this way we c  
a close relation  
in you, our reader  
wn. With the gre  
program underwa  
we have newcomer  
and County eac  
say to you LET  
AINTED.)

Above is Neal Owens  
or Police and Super  
of the Water and  
rtment, of Benton  
, with his wife an  
1109 Birch St. H  
Benton Police for  
1946. He has been  
police work in Ben  
of eight years.  
ago he was made  
ant over the Water  
Department.  
ens is the son of  
Jim Owens, Pine  
was born in the  
ction of Marshall  
has been a resident  
the past 18 years.  
erview with Chief  
pressed his thanks  
c for their support  
and stated that "he  
workers will con-  
ve in the future  
Benton one of  
ing towns in the  
ke Region.

**Shed  
Opens  
Wednesday**

erry shipping shed  
Wednesday for the  
berries from this  
r, secretary of the  
acky Strawberry  
clation and mem-  
also agent firm,  
pping and stemm-  
l be received at  
1 5 p.m. daily.  
to be handled on  
orm must be on  
y 5 p.m. each day  
en, Mr. Barger  
lles to shipments  
ck.

**Davis Dies  
City**

Katherine Davis,  
y at her home in  
Thursday May 15,  
member of the  
Church of Christ  
eral services were  
at 2 p.m. Jewell  
ated.  
clude the hus-  
C. Davis; four  
a. Curtis McCuen,  
Warren Cope-  
nt Tyree, and  
ard, all of Cal-  
sons, Luther, Ey-  
Leonard and J.  
Calvert City, and  
s of Paducah;  
Mrs. Emma Con-  
on; Mrs. Maggie  
Tenn., and Mrs.  
Evansville, Ind.  
Harvey, Eddie  
ead, all of Evans-  
6 grandchildren  
fagotting in the  
in the Calvert  
broider, with the Grand-  
y, who's pallbearers.

Silky-  
with mon  
6 grandchild  
fagotting in  
in the Calvert  
broider, with the Grand-  
y, who's pallbearers.