



MURRAY STATE
UNIVERSITY

Murray State's Digital Commons

Marshall Courier

Newspapers

1-15-1953

The Marshall Courier, January 15, 1953

The Marshall Courier

Follow this and additional works at: <https://digitalcommons.murraystate.edu/mc>

Recommended Citation

The Marshall Courier, "The Marshall Courier, January 15, 1953" (1953). *Marshall Courier*. 167.
<https://digitalcommons.murraystate.edu/mc/167>

This Newspaper is brought to you for free and open access by the Newspapers at Murray State's Digital Commons. It has been accepted for inclusion in Marshall Courier by an authorized administrator of Murray State's Digital Commons. For more information, please contact msu.digitalcommons@murraystate.edu.

Wesleyan Service Guild Meets With

Ms. Scott Dycus

The Wesleyan Service Guild met Thursday, Jan. 8, at 7:30 p. m. at the home of Mrs. Scott Dycus. Mrs. Katie Major, the president, presided over the business meeting.

John Strow was in charge of the program entitled "Sowing Seeds of Kindness," which was presented in three parts. Mrs. Strow read the opening prayer, "Love Made Manifest," presented by Mrs. Duncan. "Love Never Fails" by Cliff Treas, and "A Helping Hand" by Mrs. Pat Moore.

A social hour was enjoyed by members after the meeting. Dycus was assisted by Mrs. Johnson as hostess. The meeting will be February 12 at the home of Mrs. Cliff Treas.

Benton, The Best
• Town in Ky. •
By A Dam Site

The Marshall Courier

Western Kentucky's Largest Weekly Newspaper — Benton and Marshall County's Home Newspaper

Build Marshall
• County And It •
Will Build You

Volume XVI Paid Circulation Sells — That Is The Kind This Newspaper Offers Customers

Benton, Ky., Jan. 15, 1953

First In Circulation, First In Advertising
First In The Home, First In Reader Interest Number 34

Four Generations Attend Burnett Family Dinner

Four generations of the Burnett family attended a Christmas dinner at the home of Mr. and Mrs. Nolan Wyatt. The house was decorated in Christmas colors and a beautiful Christmas tree, bought and decorated by Mrs. Frank Street, was loaded with gifts. Mrs. Street carved the turkey and served the plates. Mrs. Wyatt was hostess, since she was the great grandmother. Others making up the four generations were Mrs. Lucille Downing, grandmother, and Hugh M. Anderson and daughter, Melinda Rose.

Others present were Mr. and Mrs. Frank Street and children, Frankie and Leslie, and Raymond Downing and Jim Cathey.

First Baptist WMS Holds Meeting At Thompson Home

The WMS of First Baptist Church met Tuesday, Dec. 16, at the home of Mrs. Luther Thompson, with Mrs. E. D. Davis, president, presiding.

Mrs. Thompson had charge of the Royal Service program, "Where Jesus Walked." The missionary situation in Israel and Lebanon was discussed by members under the different topics of the program.

Refreshments were served to Mrs. J. R. Brandon, E. D. Davis, Annie Nelson, Fanny Peters, Leslie Wallace, Gorda Hastings and Miss Lizzie Hall.

LARGE GRAPEFRUIT GIVEN TO MRS. W. L. TRAVIS

Mrs. W. L. Travis last week was showing off a two and three quarter pound grapefruit she received as a gift from her grandson, Tommy Downs.

Mr. Downs picked the grapefruit himself while in Florida and brought it to his grandmother. Mr. Downs was in Fla. on a honeymoon trip.

N-O-T-I-C-E

The CITY OF BENTON now owns one 1951 Plymouth 4 door sedan and wishes to exchange it for one new 1953 4 door sedan with heater -- any make.

If you are interested in submitting bids, please do so and state what allowance you will make in exchange. Bids must be filed with Joe Williams, City Clerk, not later than 7:00 P. M. February 2, 1953.

Shrubbery Lesson Given Homemakers By Sunshine Colley

A lesson on shrubbery was given the landscape leaders of the Homemakers by Miss Sunshine Colley, county home demonstration agent last week.

Leaders attending were Mrs. Dan Gold, Mrs. D. B. Griffin, Mrs. Leonard Cope, Mrs. C. G. Morrow, Rotchie Howard, Mrs. Ray Chamber, Mrs. Richard Edwards, Mrs. Levi Bouland, Mrs. Claude Dees, Mrs. J. L. Bouland, Mrs. Paul Creason, Mrs. William Perry, Mrs. Bluitt Rudolph, Mrs. James Turner and Mrs. Bert Kennedy.

The leaders set up landscape goals for the Homemakers for 1953.

Miss Colley showed two model houses (a ranch type and a Cape-Cod type) and how to landscape each. The leaders discussed shrubbery for foundation plantings for specimen planting and as a shrub border. Leaders will give the landscape lesson at the Homemakers club meetings in January. Visitors are always welcome at this meeting.

CARD OF THANKS

We wish to express our sincere thanks to our many friends and neighbors for their many deeds of sympathy shown us during the recent illness and death of our brother, John McNatt also the donors of flowers, Bro. Walter for his consoling words, for the many cards and letters of sympathy which made it more easy to bare, the singers and Filbeck-Cann for their untiring service. May God's richest blessings rest on each of you is our prayer.

Mrs. Mattie Myers Ben and Minnie McNatt.

Curtis Lee Grace To Wed Paducah Girl

Mr. and Mrs. W. B. Hassel of 637 Elizabeth St., Paducah, wish to announce the engagement and forthcoming marriage of their daughter, Norma Lou, to Curtis Lee Grace, son of Mrs. Gautie Grace and the late Aubrey Grace of Benton.

Miss Hassel and Mr. Grace are both employees of the Citizens Bank and Trust Company, Paducah.

Complete wedding plans will be announced at a later date.

NOTICE

Notice is hereby given that Grace Thompson, Administratrix of the Estate of Pat Thompson, has filed with the Marshall County Court her final settlement as such Administratrix. A hearing will be held in the County Judge's office at 10:00 A. M. on February 2, 1953, this being regular County Court day, and anyone holding claims against said estate may present them on or before the above date or be forever barred.

CARD OF THANKS

I want to thank all that have been so wonderful to me this Christmas. I want to thank my friends and neighbors, both Baptist and Methodist Churches and for the songs that were sung and for the prayers that were prayed. May the Lord bless and keep you all through this new year is my prayer.

NELSON DRUG STORE

Symptoms of Distress Arising from
STOMACH ULCERS
DUE TO EXCESS ACID
QUICK RELIEF OR NO COST
Ask About 15-Day Trial Offer!

Over four million bottles of the WILLARD Treatment have been sold for relief of symptoms of distress arising from Stomach and Duodenal Ulcers due to Excess Acid, Poor Digestion, Sour or Upset Stomach, Gasiness, Heartburn, Sleeplessness, etc. due to Excess Acid. Ask for "Willard's Message" which fully explains this remarkable home treatment—free—at

Kroger Canned Food Sale

KROGER — 15 1-2 Oz. CAN

CHILI Con Carne 39c

FINE QUALITY RED SOUR PITTED NO 303

CHERRIES 3 cans - - - 59c

SOLE KERNEL GOLDEN KROGER CORN 3 No. 303 Cans 49c

FINE QUALITY HUM SALMON tall can 39c

SALE!
Big Savings On CANNED FOODS
CAMPBELLS TOMATO SOUP 3 cans for 35c

SHINE KRISPY CRACKERS lb. 26c HOUSEHOLD BLEACH 20c

ARMOUR TREET 12oz. can 45c

ARMOUR TAMALES 16 Oz. Can 24c

FOUR 2 5 1-2 Oz. Cans 29c

FOUR 2 4 Oz. Cans 43c

FOUR 16 Oz. Can 32c

CRIDA TENDER SUGAR-SWEET

ORANGERINES 2 dozen 25c

WERN GROWN TRIUMPH POTATOES 10 LBS 49c

FLORIDA - SEEDLESS GRAPEFRUIT 8 Lb. Bag 59c

FANCY WINESAP APPLES 2 Lbs. 35c

GOVT. GRADED — TOP QUALITY HUCK ROAST pound 55c

GOVT. GRADED — TOP QUALITY ROLOIN STEAK LB 79c

FRESH DAILY KROGER CUT SHORT RIB Boiling BEEF lb., 29c

SKINLESS PORK CUT UP TRAY PACKED FRYERS lb. 55c

QUALITY - SLICED CON lb. 47c

SLICED OR PIECE LOGNA lb. 39c

WOWLS lb. 27c

World's newest V8

with a million miles behind it

HERE, in literal fact, is the most advanced V8 engine ever placed in a standard-production American automobile.

It is the first such V8 to reach an 8.5 to 1 compression ratio, and the first with a dynamic flow muffler that cuts power loss to zero.

It is the first V8 to utilize vertical valves together with a 12-volt electrical system instead of the usual 6. It is also the first designed with new "T" type intake manifold to replace the "Y" type conventionally used in V8s.

It is, quite simply, the first V8 Fireball Engine—the engine that brings electrifying performance to the greatest Buicks in fifty great years—the engine that powers the 1953 Buick Roadmaster with 188 hp., and the 1953 Buick Super with up to 170.

Naturally, this spectacular new V8 has been proved—by eight years of developing, testing, improving, perfecting—

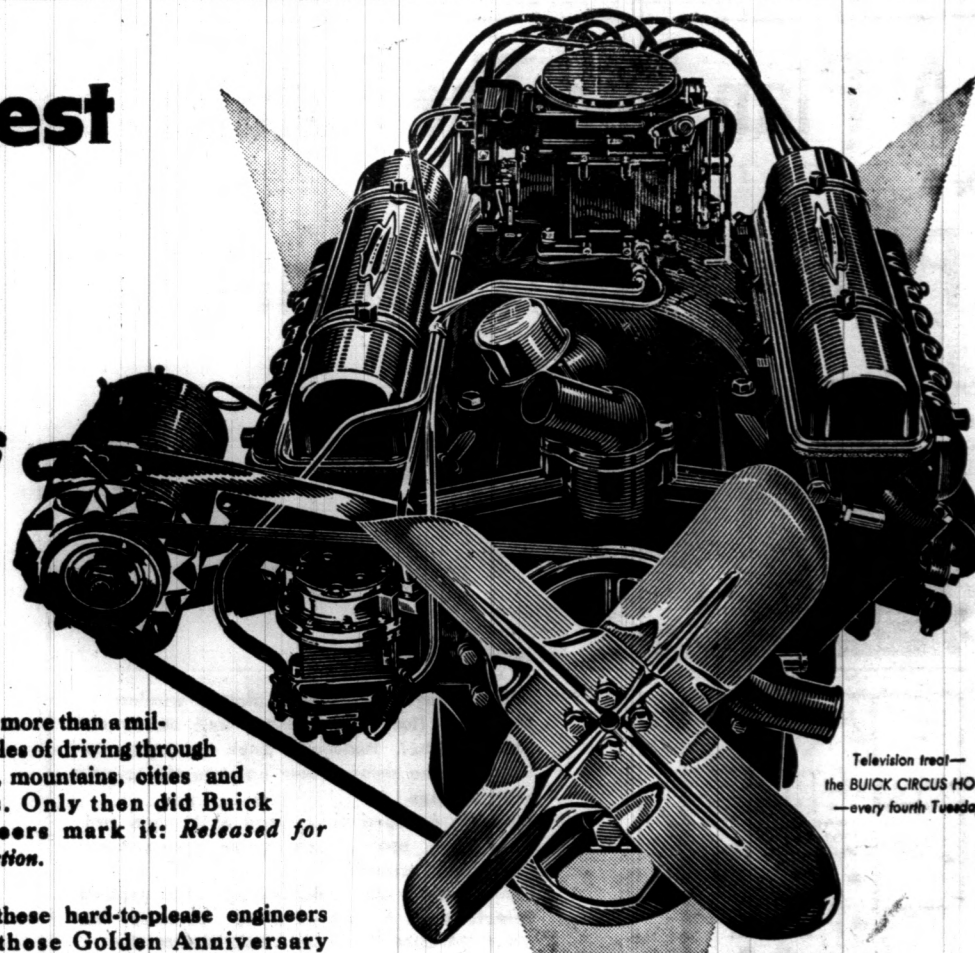
and by more than a million miles of driving through desert, mountains, cities and plains. Only then did Buick engineers mark it: Released for Production.

But these hard-to-please engineers gave these Golden Anniversary Buicks far more than new power.

They gave them, too, a still finer ride, more superb comfort, new braking power and handling ease—and a sensational new Twin-Turbine Dynaflo Drive* that adds new quiet and whip-fast getaway to absolute smoothness.

Nothing, we believe, will do more justice to your automobile dollars—or to your love of magnificent motoring—than a visit to us right now.

*Standard on Roadmaster; optional at extra cost on other Series.



THE GREATEST
BUICK
IN 50 GREAT YEARS

WHEN BETTER AUTOMOBILES ARE BUILT
BUICK WILL BUILD THEM

Lee Scarbrough Buick Co.

300 EAST 12TH STREET

BENTON, KENTUCKY

via a MINK COAT

360 MINK PRIZES
with \$150,000
LUX TOILET SOAP'S
4 BIG WEEKLY
CONTESTS

GOVT. GRADED — TOP QUALITY

HUCK ROAST pound 55c

GOVT. GRADED — TOP QUALITY ROLOIN STEAK LB 79c

FRESH DAILY KROGER CUT SHORT RIB Boiling BEEF lb., 29c

SKINLESS PORK CUT UP TRAY PACKED FRYERS lb. 55c

QUALITY - SLICED CON lb. 47c

SLICED OR PIECE LOGNA lb. 39c

WOWLS lb. 27c

WOWLS lb. 27c

WOWLS lb. 27c

WOWLS lb. 27c

WOWLS lb. 27c

Church Programs

Brewers Circuit

J. J. Barron, Pastor
Frederick M. E. Church
 Fourth Sunday morning at 10 o'clock.
 First Sunday evening at 7 o'clock.
 Sunday School each Sunday
Oak Level M. E. Church
 morning at 10 o'clock.
 Second Sunday morning at 11 o'clock.
 Third Sunday evening at 7 o'clock.
 Sunday School each Sunday morning at 10 o'clock.
 Pleasant Grove M. E. Church—
 First and third Sunday morning at 11 o'clock.
 Second and fourth Sunday evenings at 7 o'clock.
 Sunday School each Sunday morning at 11 o'clock.

BENTON CIRCUIT

Mt. Carmel
 Sunday School each Sunday morning at 10 o'clock.
 Preaching every first Sunday at 11 a.m.
Church Grove
 Sunday School every Sunday at 10 a.m.
 Preaching 2nd Sunday morning at 11 o'clock, and 3rd and 4th Sunday at 7 p.m.
Maple Spring
 Preaching 3rd Sunday at 11 a.m. and 1st Sunday at 7 p.m.

First Methodist Church

Rev. W. D. Grissom, Pastor
 Joe Coulter, Gen. Supt.
 Sunday school at 9:45 A. M.—
 Morning worship, 11:00 a.m.
 11:00 A. M.—Sermon by the Pastor.
 Everyone welcome.

HARDIN METHODIST CHURCH

Rev. Max Sykes, Pastor
 Hardin: Sunday 10:00 a.m.
 every Sunday. Worship third Sunday at 11:00 a.m.; First Sunday at 7:00 p.m.
 Dexter: Sunday school 10:00 a.m. every Sunday except third Sunday and worship at 11:00 o'clock; Sunday school 10 A. M.

FIRST MISSIONARY BAPTIST CHURCH

J. Frank Young, Pastor
 Sunday School, 9:30 a.m.
 B.T.U., 6:00 p.m.
 Homer Faw, Director.

Worship Services every Sunday at 10:45 a.m. and 7:00 p.m.
 Mid-week Prayer Service 7:00 p.m.
 The public is cordially invited to attend these services.

FIRST CHRISTIAN CHURCH

Rev. Bill Williams, Pastor
 Joe Williams, Supt.
 Sunday school 10:00 a.m.
 Worship Service 11:00 a.m.
 You are cordially invited to come and worship with us.

W. GILBERTSVILLE BAPTIST CHURCH

(The Rev. Curtis Haynes, Pastor)
 Sunday school 9:45 A. M.
 Preaching 11:00 A. M.
 Bible Study Wednesday nights.
 Training Union 6:00 P. M.
 B.T.U. 6:00 P. M.
 Preaching 7:00 P. M.
 Mid-Week Prayer service each

CALVERT CITY BAPTIST CHURCH

(Galen L. Hargrove, Pastor)
 Bible School 10 a.m. Hardy Cann, Supt.
 Training Unions 6:45 p.m.
 Guy Hefner, director.
 Day night at 7:00 o'clock.

BENTON FIRST BAPTIST CHURCH

(E. L. Davis, Pastor)
 Jimmie Lester, Supt.
 Sunday school, 9:45 A. M.
 Morning worship, 10:45 A. M.
 Training Union 6:30 P. M.
 Evening worship, 7:30 P. M.
 Prayer service, Wednesday 7:00 P. M.
 The public is cordially invited to attend all the services of the church.

NEW HARMONY BAPTIST

Rev. Jack R. Doom, Pastor
 Robert Copeland Sunday School Supt.
 Prayer Service Saturday at 7:30 P. M.
 Sunday School Sunday at 10:00 A. M.
 Morning worship Sunday at 11:00 A. M.
 B.T.U. class for all ages at 6:30 P. M.
 Evangelistic Service Sunday at 7:30 P. M.
 A Cordial welcome to all.

ASTHMA COUGHS

Don't let difficult breathing, coughing and wheezing, due to recurring spasms of Bronchial Asthma or simple Bronchitis, ruin your sleep and energy without trying MENDACO. Works through your blood to help loosen and remove thick, strangling mucus. Thus usually allows coughing which permits freer breathing and sounder sleep. Get MENDACO under money back guarantee at drugstore.

Visitors are never strangers

Olive Baptist Church

(Willie Johnson, Pastor)
 Preaching services each Sunday at 11:00 A. M. and 7:00 P. M.
 Sunday school at 10 A. M.
 Prayer meeting, Wednesday at 7:00 P. M.
 Everyone Welcome

LAKEVIEW BAPTIST CHURCH

(James C. Ashbridge, Pastor)
 Roy Vasseur, Supt.
 Sunday school 9:45 a.m.
 Worship Service 11:00 a.m.
 M. and 7:00 P. M.; B.T.U. 6:00 P. M., each Sunday.
 Paul Gregory, Director.
 Prayer meeting Wednesday 7:00 P. M.
 You are cordially invited to attend all these services.

MT. MORIAM PRIMITIVE BAPTIST CHURCH

(Gordon Heaton Pastor)
 Preaching each Second, Fourth and Fifth Sundays Services at 11 o'clock.
 Worship Services 11 a.m. and 7:45 p.m.
 Wednesday Prayer Service 7:45 p.m.

HARDIN BAPTIST

George E. Clark Pastor
 Sunday services: 10:00 A. M. under school 11:00 A. M. Preaching Service 11:00 A. M. and 4th Sundays 7:00 P. M. Prayer meeting Wednesday night 7:30 P. M.

PRESBYTERIAN CHURCH

THANK HEAVENS! Most attacks are just acid indigestion. When it strikes, take Boil-and-tablets. They contain the fastest-acting medicines known to doctors for the relief of heartburn, gas and similar distress. 25¢.

CHOKED with GAS?

"Suffered 7 years—then I found Pazo brings amazing relief!"
 says Mr. M. W., Los Angeles, Calif.
 Speed amazing relief from minutes of simple Pazo, with soothing Pazo! Acts to relieve pain, itching instantly—soothes inflamed tissues—lubricates dry, hardened parts—helps prevent cracking, soreness—reduces swelling. You get real comforting help. Don't suffer needless torture from simple Pazo. Get Pazo for fast, wonderful relief. Ask your doctor about it. Suppository form—also tubes with perforated pile pipe for easy application. *Pazo Ointment and Suppositories @

Rev. Raymond A. Long, Pastor
 Richard Rudolph, Supt.
 Sunday School 10:00 a.m. Worship 11:00 A. M.
 C. Y. F. 6:30 P. M.
 Evening services at 7 P. M.
 The public is welcome to each

BETHLEHEM BAPTIST

Rev. Clayton Wyatt, pastor
 W. O. Powell, supt.
 Sunday school 10 a.m. Worship service 10 a.m. and 8 p.m.
 Training Union 7 p.m.
 Wednesday prayer service 7:30 p.m.

Church of Christ

Bible Study 10:00 A. M.
 Worship 11:00 A. M.
 Worship 6:30 P. M.
 Bible Study Weds. 7:45 P. M.
 Everyone invited.

BRIENSBURG BAPTIST

T. L. Campbell, Pastor
 Harvey T. Culp, Gen. Supt.

Shaving Is Slicker—Blade Changing Quicker

BUY Gillette BLUE BLADES IN HANDY DISPENSER
 used-blade compartment
 20 for 10 for 98¢ 49¢

SORE PILES

Don't let sore, fiery, painful, itching simple Piles drive you nearly crazy. In 15 minutes CHIFACOID starts giving you wonderful cooling, soothing, temporary relieving relief from pain, burning and itching or money back guaranteed. Genuine CHIFACOID costs only \$1.00 at drugstore. Try it today for better sleep tonight and a brighter tomorrow.

"Hot flashes" of Change of Life stopped or strikingly relieved

In 63-80% of the cases in doctors' tests!
 • Those suffocating "heat waves"—alternating with nervous, clammy feelings—and accompanied often by restless irritability and nervousness—are well-known to women suffering the functionally-caused distress of middle life "change"! You want relief from such suffering. And—chances are—you can get it. Thrilling relief! Thanks to two famous Lydia Pinkham medicines!

"In doctors' tests, Lydia Pinkham's Compound and Tablets brought relief from such distress in 63 and 80% (respectively) of the cases tested. Complete or striking relief!"
 Thousands Have Benefited
 Amazing, you say? Not to the many thousands of women who know from experience what these Lydia Pinkham medicines can do!
 Their action—actually—is very modern. They exert action—entirely calming, soothing effect!

Try Lydia Pinkham's on the basis of medical evidence! See if you, too, don't gain blessed relief from those terrible "hot

1:00 P. M.
 Wednesday at 7:00 P. M.

CHURCH OF CHRIST

(Paul J. Waller)
 Bible study 10:00 A. M.
 Worship 11:00 A. M.
 Worship 6:30 P. M.
 Bible Study Weds. 7:45 P. M.
 Everyone invited.

BRIENSBURG BAPTIST

T. L. Campbell, Pastor
 Harvey T. Culp, Gen. Supt.

Shaving Is Slicker—Blade Changing Quicker

BUY Gillette BLUE BLADES IN HANDY DISPENSER
 used-blade compartment
 20 for 10 for 98¢ 49¢

SORE PILES

Don't let sore, fiery, painful, itching simple Piles drive you nearly crazy. In 15 minutes CHIFACOID starts giving you wonderful cooling, soothing, temporary relieving relief from pain, burning and itching or money back guaranteed. Genuine CHIFACOID costs only \$1.00 at drugstore. Try it today for better sleep tonight and a brighter tomorrow.

"Hot flashes" of Change of Life stopped or strikingly relieved

In 63-80% of the cases in doctors' tests!
 • Those suffocating "heat waves"—alternating with nervous, clammy feelings—and accompanied often by restless irritability and nervousness—are well-known to women suffering the functionally-caused distress of middle life "change"! You want relief from such suffering. And—chances are—you can get it. Thrilling relief! Thanks to two famous Lydia Pinkham medicines!

"In doctors' tests, Lydia Pinkham's Compound and Tablets brought relief from such distress in 63 and 80% (respectively) of the cases tested. Complete or striking relief!"
 Thousands Have Benefited
 Amazing, you say? Not to the many thousands of women who know from experience what these Lydia Pinkham medicines can do!
 Their action—actually—is very modern. They exert action—entirely calming, soothing effect!

Try Lydia Pinkham's on the basis of medical evidence! See if you, too, don't gain blessed relief from those terrible "hot

FLASHES" and weakness so common in "change of life."

Don't put it off! Get Lydia Pinkham's Vegetable Compound or new, improved Tablets with added iron (trial size only 59¢).

Wonderful—too—for the functional pains, cramps, "dragged-out" feelings and other discomfort of monthly menstrual periods!

Training Unions 6:00 p.m., Paul Clayton, director.
 Preaching Services 11:00 a.m. and 7:00 p.m.
 Wednesday evening Prayer Services at 7:00 p.m.

PERSONALS

Bill J. Greenfield and a companion in the Army from El Paso, Texas, visited his parents, Mr. and Mrs. Carl Greenfield on Rt. 1 during the past two weeks.

Wilson's Book Store

Office Furniture
 Office Supplies
 Duplicators
 Books - Music
 Fountain Pens
 Greeting Cards
 306 Broadway Paducah, Ky.

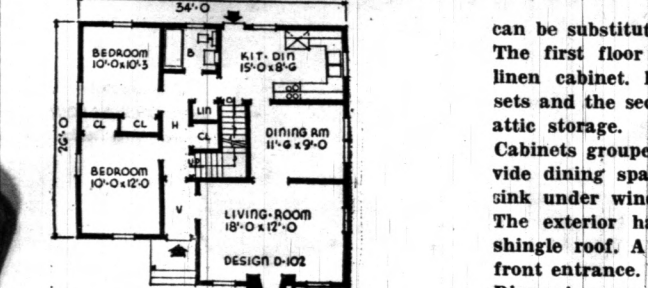
Announcing THE PURCHASE OF The SOUTH MARKET

By **JOE TOM HALTOM** WHO WILL FEATURE
 • Fresh Fancy And Staple Groceries Of All Kinds
 • Fresh Meats And Poultry
FREE DELIVERY — PHONE 2851
 "We Will Appreciate Your Business"

The SOUTH MARKET

Joe Tom Haltom, Proprietor

A Plan For The Future Or A Plan Of The Present



The CAXTON can be expanded into a four bedroom house by adding two on the second floor. By leaving out the archway the dining and living room can be combined. The fireplace is a feature of the front gable but it

can be substituted with a picture window. The first floor has a large hall closet and linen cabinet. Bedrooms have wardrobe closets and the second floor has two closets and attic storage. Cabinets grouped at one end of kitchen provide dining space, with double compartment sink under window. The exterior has wide siding and asphalt shingle roof. A covered stoop protects the front entrance. There is a full basement. Dimensions are 34 feet by 26 feet with a five and one-half foot protection. Floor area is 988 square feet. Cubage is 26,748. For further information about THE CAXTON, write the Small House Planning Bureau, St. Cloud, Minn.

We hope we can be of service to you on plans for a New Home. We Invite you to discuss your plans with us.

QUALITY BUILDING MATERIALS

BUILD THROUGH F. H. A. Treas Lumber Co.

from Foundation to Roof — We Have It
 Phone 2301 Benton, Ky.

THE GIRL FRIEND'S

WHERE CAN I GET A LICENCE?
 A HUNTING LICENSE?



PUTTIN' ON THE DOG

DID YOU KNOW THAT GROONER GETS \$75,000 A YEAR?
 IS THAT SO?



MOLLY AN' ME

FENWICK, WOULD YOU LEND ME FIVE DOLLARS IF I ASKED YOU?
 OF COURSE, MOLLY.



NO—THE HUNTING IS OVER—



WHY, THAT'S WHAT THE PRESIDENT GETS!



ALL RIGHT—LEND ME TEN, BUT JUST GIVE ME FIVE OF IT.

OKAY, BUT WHY?



I WANT A LICENSE TO MARRY THE MAN I CAUGHT!



AND CAN YOU IMAGINE THE PRESIDENT CAN'T SING A LICK!



THEN YOU'LL OWE ME FIVE AND I'LL OWE YOU FIVE WE'LL BE SQUARE!

??



FACTS Farm

difference between the farmers get for their product and the cost of producing it. 1953 the cost of production is expected to be up almost 10% down. Even though the farmer can decrease the price for his product here are many things that can do to hold down the costs.
 The higher the acreage the lower the unit cost. The farmer that produces more yields in 1953 will be "going tough". So out the year this column on facts that tend to yield and lower costs. Important of these varieties, and "doing" thing at the right

FACTS Farm

Supplies in 1953 are expected to be about 10% more plentiful than in 1952, which is fortunate because about 20% of our day production is the added plant food.

FACTS Farm

Supplies in 1953 are expected to be about 10% more plentiful than in 1952, which is fortunate because about 20% of our day production is the added plant food.

FACTS Farm

Supplies in 1953 are expected to be about 10% more plentiful than in 1952, which is fortunate because about 20% of our day production is the added plant food.

FACTS Farm

Supplies in 1953 are expected to be about 10% more plentiful than in 1952, which is fortunate because about 20% of our day production is the added plant food.

FACTS Farm

Supplies in 1953 are expected to be about 10% more plentiful than in 1952, which is fortunate because about 20% of our day production is the added plant food.

FACTS Farm

Supplies in 1953 are expected to be about 10% more plentiful than in 1952, which is fortunate because about 20% of our day production is the added plant food.

FACTS Farm

Supplies in 1953 are expected to be about 10% more plentiful than in 1952, which is fortunate because about 20% of our day production is the added plant food.

FACTS Farm

Supplies in 1953 are expected to be about 10% more plentiful than in 1952, which is fortunate because about 20% of our day production is the added plant food.

FACTS Farm

Supplies in 1953 are expected to be about 10% more plentiful than in 1952, which is fortunate because about 20% of our day production is the added plant food.

FACTS Farm

Supplies in 1953 are expected to be about 10% more plentiful than in 1952, which is fortunate because about 20% of our day production is the added plant food.

FACTS Farm

Supplies in 1953 are expected to be about 10% more plentiful than in 1952, which is fortunate because about 20% of our day production is the added plant food.

FACTS Farm

Supplies in 1953 are expected to be about 10% more plentiful than in 1952, which is fortunate because about 20% of our day production is the added plant food.

Jan. 15, 1953

Book Store
Books - Music
Mountain Park
Greeting Cards
Paducah, Ky.

Arm Facts
KENTUCKY FOLKS
Wm. C. Johnstone
AGRICULTURAL REPRESENTATIVE
KENTUCKY BANKERS ASSOCIATION

ARM FACTS
FACTS Farm profits
reference between the
farmers get for their pro-
ducts the cost of producing
the cost of producing
1953 the cost of pro-
ducts expected to be up and
down. Even though
the price for his pro-
ducts are many things
can do to hold down the
costs.
The higher the acre
age the unit cost. The
farmer that produces
age yields in 1953 will
"going tough". So,
at the year this column
on facts that tend to
yields and lower costs.
Important of these are
varieties, and "doing
thing at the right

ARM FACTS
Supplies
ers in 1953 are expect-
about 10% more plenti-
in 1952, which is for-
cause about 20% of our
y production is the re-
ded plant food.
Kentucky Experiment Sta

ARM FACTS
The number of far mworkers
declined at a rate of 10,000 per
year during the past 15 years.
In spite of this, Kentucky farm-
ers are producing more than
ever a big factor being the in-
crease in tractors - from 12,000
in 1940 to 59,000 in 1950.

ARM FACTS
Kentucky's 3.9 million head of live-
stock (exclusive of products)
are valued at 1/2 billion dollars.
But, Kentucky farmers are doing
little to aggressively promote
improvement of livestock. Only
14 counties have organized Live-
stock Improvement Associations.
Such local associations can do
much to improve livestock qual-
ity and production methods.
How about your county? If
you do not have such an associa-
tion, why don't you help orga-
nize one?

ARM FACTS
LIVESTOCK FACTS
Kentucky's 3.9 million head of live-
stock (exclusive of products)
are valued at 1/2 billion dollars.
But, Kentucky farmers are doing
little to aggressively promote
improvement of livestock. Only
14 counties have organized Live-
stock Improvement Associations.
Such local associations can do
much to improve livestock qual-
ity and production methods.
How about your county? If
you do not have such an associa-
tion, why don't you help orga-
nize one?

ARM FACTS
LIVESTOCK FACTS
Kentucky's 3.9 million head of live-
stock (exclusive of products)
are valued at 1/2 billion dollars.
But, Kentucky farmers are doing
little to aggressively promote
improvement of livestock. Only
14 counties have organized Live-
stock Improvement Associations.
Such local associations can do
much to improve livestock qual-
ity and production methods.
How about your county? If
you do not have such an associa-
tion, why don't you help orga-
nize one?

THE BIBLE SPEAKS
International Union
Spiral School Lessons
BY DR. KENNETH J. FOREMAN
Scripture: Matthew 16.
Devotional Reading: Philippians 2:1-11.
Confess—Follow
Lesson for January 11, 1953

Another of those Bible words
stand, is the word "confess." Or-
dinarly we connect this word in
our minds with a court of law, or
with some wrong that has been
done. When we say the prisoner
signed a confession, we mean he
admitted he was guilty. When
Catholics go to confession, they
are expected to tell the priest all
about their sins. In the English
Bible the word sometimes has this
meaning, as when John says that
if we confess our sins, God will for-
give (1 John 1:9).

Where Do You Stand?
But there is another meaning
of these words "confess" and "con-
fession" which is quite different.
It does not always
mean to admit.
Sometimes it
means to declare,
to announce pub-
licly and proudly,
as plainly as pos-
sible. For in-
stance, Paul tells
Timothy (1 Tim.
6:13) that Jesus,
before Pilate,
made a "good con-
fession." Paul is
not saying for a minute that Jesus
admitted that the charges against
him were true. What he means is
that Jesus stood up for God and
his duty, he did not let down his
flag, he stood out for the truth.
The expression is often used, re-
ferring to Peter's saying to Christ,
"You are the Christ," and it has
come to be known as "Peter's
confession." This does not mean
that Peter admitted something; on
the contrary, he affirmed some-
thing. He was declaring his belief.
He was letting it be known where
he stood. The Christ who has
made much use of it. But
it might be said, "Well, all
some other words, like 'I believe' and
churches will use it, and it is
to 'confess' Christ. We could just
as well say 'standing up for' him;
voting for him and 'having one's
vote put on record. When Christ
asks: Are you with me? Confessing
means simply saying openly: Yes!

Christ Never Outranked
There is something else tied up
in this idea of "confessing" Christ.
It includes saying something about
Christ. Peter's confession, accord-
ing to Matthew, was "You are the
Christ, the Son of the living God."
Luke reports that he said, "You
are the Christ of God." Mark re-
ports simply: "You are the Christ."
All agree that Peter declared Jesus
to be the Christ. To us, "Christ"
is a name; to Peter it was a title.
The highest title he knew. When a
first-century Jew used the word
"Christ" he meant there was no
one else in his class. He meant
God's chosen beginner of a new
age. There was no higher word
that Peter could have chosen than
"Christ." So to this day when we
say that a Christian confesses
Christ, we ought to mean that he
puts Christ above all others, that
he knows no one can outrank
Christ. We mean what the old
hymn says, "All hail the power of
Jesus' name, let angels prostrate
fall."

More than Mouth-Christians
But there is still another word
the church has always used, be-
cause Jesus used it: Follow. Con-
fession alone is not enough. It may
take courage to confess Christ. It
takes sincerity and also stick-to-it-
iveness to follow him. Confession
can be done in a burst of enthusi-
asm; following takes the long pull.
Confessing Christ means saying he
comes first in your life. But does
he? Who or what is really first?
There are a great many—too many
—church members today who have
been as much of a Christian as
they can possibly be—with their
mouths. They have confessed
Christ as Son of God, as Lord and
Saviour. They have said, in effect,
that they wish to be counted on
his side. But when they "joined
the church" or were "confirmed,"
that is about as far as it went. They
hardly even warm a pew nowa-
days. What is needed is something
more than mouth-Christians, voice-
Christians, word-Christians, shout-
ing Christians. What is needed is
following-Christians.

**It is noticeable that almost im-
mediately after Jesus had praised
Peter for his confession, he called
him Satan, the very devil. For it
was plain that Peter was thinking
along lines quite different from
Jesus. Following Christ means
thinking more and more as he
would think.**
(Based on outlines copyrighted by the
Division of Christian Education, for
Home Devotion of the Churches of Christ
in the U.S.A. Released by Wm.
Foreman.)

JAN White SALE

AT
Belk-Settle Co. In Murray

Save! Save! on Household Needs-Now!

SAVE ON SHEETS

ONE LOT 81 x 99
SHEETS
Special 159 or 2 for \$300

81 x 99 TYPE 128 COUNT
SHEETS
Reg. 2.29 - Sale \$200

72 x 108 TYPE 128 COUNT
Reg. 2.29 - Sale \$200

SPRING MAID TYPE 128
COLORLED SHEETS
72 x 108 \$2.79
81 x 108 \$2.95

TYPE 128 QUALITY MUSLIN
FITTED SHEETS
TWIN BED SIZE
Regular \$2.29 Sale \$2.00
DOUBLE BED SIZE
Regular \$2.49 Sale \$2.19

SALE --- Towels & Bath Cloths

BATH CLOTH Special

1 Lot Special 5c
1 Lot Reg. 10c or 12 for \$1.00
1 Lot Reg. 15c or 8 for \$1.00
1 Lot Reg. 25c or 5 for \$1.00

NEW SHIPMENT
BATH SETS
Good Assortment Colors
\$1.00

NEW SHIPMENT
BATH MAT SETS
Good Assortment Colors
\$1.98

Extra HEAVY CANNON
TOWELS SPECIAL
One Lot Reg. 1.29 Values
SPECIAL 79c
One Lot Reg. 1.00 Values
Special 69c or 2 for \$1.25
One Lot Reg. 69c Values
SPECIAL 2 for \$1.00
One Lot Reg. 59c Value
SPECIAL 49c
One Lot Reg. 49c Value
Special 39c or 3 for \$1.00

NEW SHIPMENT White, Pink, Blue, Yellow, Green
ORGANDY CURTAINS, 90" \$1.98

ONE LOT 90" Long White, Pink, Blue, Yellow, Green
ORGANDY CURTAINS, Spec. 2.95

ONE LOT 90" Long White, Pink, Blue, Yellow, Green
ORGANDY CURTAINS, Spec. 3.95

NEW SHIPMENT
PLASTIC DRAPES, pair 1.00

NEW SHIPMENT PLASTIC
KITCHEN CURTAINS, pair 1.00

42 x 36 TYPE COUNT
PILLOW CASES, 59c or 2 for 1.00

ONE BIG TABLE FALL AND WINTER
HANDBAGS 1-2 PRICE

NEW SHIPMENT — Assorted Pastel Colors
Jr. BUTCHER LINEN, yd. 59 & 79c

NEW SHIPMENT EVERGLAZE
TISSUE FAILE, 1.98

NEW SHIPMENT — Good Assortment Colors
Taffetised CHAMBRAY 89c

ONE TABLE 80 SQ. FAST COLOR
PRINTS 39c

ONE TABLE REG. 39c FAST COLOR
PRINTS 29c or 4 Yards 1.00

NEW SHIPMENT 18 x 30 NON SKID
SHAG RUGS Special 1.00

NEW SHIPMENT HIGHLAND PARK
GINGHAM & CHAMBRAYS 79c

ONE TABLE REG. 2.95 And 3.95
Woolen MATERIALS Spec. 2.00

BELK-SETTLE CO.
Murray, Kentucky

RUPTURE
DERFUL new invention now sold here. If you wear any
of truss, then see this latest scientific discovery —
MINUTES TORTUROUS BULBS, BELTS & STRAPS —
HERLAND'S IMPROVED TRUSS — Guaranteed never
slak, rust or lose tension. — No elastic — No leather —
Dale & Stubblefield
MURRAY, KENTUCKY

PEEL'S
JEWELRY — LOANS
FINE JEWELRY — LUGGAGE — LOANS
on anything of value
— OUR NEW LOCATION —
209 B'Way — Paducah, Ky.

CONFIDE IN YOUR
DOCTOR!
HAVE Confidence
IN US!

DRUG STORE
PADUCAH, KY.

MARKET YOUR TOBACCO IN MURRAY, KY.

DARK FIRED MARKET SALES NOW UNDERWAY ON WESTERN KENTUCKY'S LARGEST DARK-FIRED MARKET

- 15,000,000 LBS. MORE Fire-Cured Tobacco Sold On the Murray Market than any other Market in the past 6 Years.
- \$5,000,000 More Paid To Farmers Than Any Other Market.
- \$2.30 PER HUNDRED HIGHER Average Than any other Market.

(For Example: A crop of Tobacco weighing 6000 lbs. brought \$138.00 more on the same amount of tobacco at Murray than on any other mkt.)

- More Independent Warehouses
- More Buyers
- Better Floors & Service

SELL YOUR TOBACCO OVER ONE OF THE FOLLOWING FLOORS

FARRIS LOOSE LEAF FLOOR

PLANTERS LOOSE LEAF FLOOR

DORAN LOOSE LEAF FLOOR

GROWERS LOOSE LEAF FLOOR

OUTLAND'S LOOSE LEAF FLOOR



Marshall Cou

James W. Ra
in Honor
Soldier of M

PORT LAWTON,
James W. Ray
and Mrs. John
Benton, Ky. was
"Soldier of t
and at this Nor
for December.
is the second
has received
military
January 1950, he
"soldier" in C
after his
Lawton. At t
assigned duties
stant section. No
the 894th Army
was presented
of award by
Wilson, post com
recently married
resides with h
in Seattle.

SIAL SERVICES

W. J. BRYAN,

General services
an, 95, were he
6, at Filbeck
pel, the Rev. B
ciating. Mr. B
mber of the Cum
erian Church.

Mr. Bryan, who
ne on Paducah
ied in Briensbur
Mrs. Frank Green
Route 4 is one o
six daughters. F
ndchildren and 13
dren also surviv

CARD OF THE

We wish to than
nds and neighb
forting words a
dness during the
th of our husband
nes B. Sheppard
specially do we
for the many b
r; also Brother C
Filbeck - Can
ne.
ay God bless eac
roobe Mae She
dren.

PERSONALS.

r. and Mrs. Virg
ily and Hugh
hville recently
Mrs. Joe Bryant
rs. W. Y. Hiter
stmas holidays
i. Hiter and fam

r. and Mrs. Joh
Detroit spent th
his parents, M
Copeland of Ro
eland is with th
ional Bank of
wed his subscri
rier while here.
liss Carol Turner
at the holidays
her mother, M
ett.
liss Margaret H
is visited her
lena Hicks, durin
s.

The Home Of
Nationally
Known
Quality
Furniture
And Easy
Terms

Open Friday ev-
nings till 8:30 p.
m. Other even-
ings by appoint-
ment.

PADUCAH
Phone 366
MAYFIELD
Phone 161

RHO
BURFORD

W. Rayburn Honored As Soldier of Month

ST. LAWTON, WASH. — James W. Rayburn, son of Mrs. John F. Rayburn, Benton, Ky., was selected for "Soldier of the Month" at this Northwest Army for December.

It is the second time Rayburn has received this award. In military service in May 1950, he was selected "soldier" in October 1951, after his arrival at Lawton. At that time, he assigned duties with the section. Now a member of the 894th Army Postal Unit, he presented the certificate of award by Col. Garnett Olson, post commander.

Rayburn is married, Pfc. Rayburn resides with his wife, Leo-Seattle.

AL SERVICES HELD W. J. BRYAN, 95

Funeral services for W. J. Bryan, 95, were held Tuesday, Jan. 13, at Filbeck and Cann, 11, the Rev. E. A. Mathis officiating. Mr. Bryan was a member of the Cumberland Presbyterian Church.

Bryan, who died at his home on Paducah Route 1, was buried in Briensburg Cemetery.

Frank Greenfield of Benton is one of the survivors of the four sons, 30 children and 13 great grandchildren also survive.

CARD OF THANKS

We wish to thank all of our friends and neighbors for their kind words and deeds of sympathy during the sickness and death of our husband and father, B. Shepard Sr.

Especially do we think every- one for the many beautiful flowers also Brother George Long Filbeck - Cann Funeral Home.

God bless each of you.
Mae Shepard and
Children.

PERSONALS.....

Mr. and Mrs. Virgil Hiter and Mr. and Mrs. Hugh Brown of Louisville recently visited Mr. and Mrs. Joe Bryant on Route 4.

Mr. W. Y. Hiter spent the Christmas holidays with her son, Hiter and family on Route 4.

Mr. and Mrs. John Copeland of Detroit spent the holidays with his parents, Mr. and Mrs. Copeland of Route 1. John Copeland is with the Industrial Bank of Detroit. He received his subscription to the paper while here.

Miss Carol Turner of Detroit spent the holidays in Benton with her mother, Mrs. H. P. Turner.

Miss Margaret Hicks of St. Louis visited her mother, Mrs. Anna Hicks, during the holidays.

Home Of
Nationally
Known
Quality
Furniture
And Easy
Terms

Home Of
Nationally
Known
Quality
Furniture
And Easy
Terms

Open Friday ev-
nings till 8:30 p.
Other even-
ings by appoint-
ment.

PADUCAH
Phone 366
BENTON
Phone 161

RHODES
BURFORD CO.



JOIN THE MARCH OF DIMES

THE NATIONAL FOUNDATION FOR INFANTILE PARALYSIS - FRANKLIN D. ROOSEVELT, FOUNDER

MAIL, SEND OR BRING YOUR CONTRIBUTION TO Marvin Prince

CHAIRMAN, March of Dimes

For Marshall County
Benton, Kentucky

President Cheers Polio Patients



President-elect Dwight D. Eisenhower stops by at St. Mary's Hospital in Rochester, Minn., to visit with David Madden, who has been in an iron lung for five years. Young Jerry Snow, 12, looking on, experienced a light case of polio during 1952's record epidemic and is now fully recovered. Madden, who is being aided by March of Dimes, was much cheered by the President's visit. This 1953 March of Dimes campaign continues for the entire month of January. Contribute generously today.

Don't Wait-Send in Your Gift Today

Help Some Child To Walk And Play Again

Give Voluntarily To
March of Dimes

Drive Closes

JANUARY 31

Won't You Help

Help Strengthen This Arm



THIS AD SPONSORED BY BUSINESSES AND PROFESSIONAL MEN OF MARSHALL COUNTY

Leneaves Service Station
U-Tote-Em Grocery & Super Market
Benton Sports Center
Morgan's Department Store
Lampkins Motor Sales
Roy E. Henson, Dist. Mgr.
W. O. W. Life Ins. Society
J. B. (Mutt) Ray Service Station
Meadows Bros. Locker Plant
Hunt's Drive-In Market
The Co-Op Store
The Marshall Courier
Hurley & Riley Realty Company
Crawford - Ferguson

Ervin Poe, Hotpoint Appliances, Palma, Ky
Fleming Furniture Company
Harrison Vickers Legion Post 144
Joe Darnall - Standard Oil Agent
Butlers Grocery
Linn Funeral Home
Hutchens Style-Mart Store
Bank Of Benton
Morgan, Trevathan & Gunn, Ins.
Benton Standard Station
Wyatt's Garage, Palma, Ky.
Benton Cleaners
Collier - Peak Funeral Home
Martin Tractor & Implement Co.

Peerless Cleaners
Holmes Service Station
Sledd's Texaco Service
Filbeck & Cann Funeral Home
C. L. Walker, Farm Bureau Ins. Phone 6801
Marshall County Board Of Education
Myers & Elkins Grocery
Hutchens Bar-B-Q
Lane & Ragsdale Lumber Company
J. R. Brandon, Insurance
Cooksey & Smith Drygoods
Kinney Appliance Company
Hal Perry, General Contractor
Bank Of Marshall County

Breezeel Children Present Yule Gifts To Elderly Folks

Breezeel School children and their teacher, Miss Lela Green, surprised several of the elderly folks of the community with gifts during Christmas.

Mr. and Mrs. Nolan Wyatt were presented with an electric lamp, and they were so happy with the gift they kept it burning night and day during the holiday season.

Those taking part in the giving were:

Miss Green, Huntas Wood, Ronnie Taylor, Anna Castleberry, Ann Pison, Thomas Gipson, Joe Edd Smothers, Jimmy Johnson, Essie Taylor, Shirley Darnell, William Hamlet, Robert Copeland, Kinzie Castleberry, Benny Harrison, Lela Wood, Frankie Smothers, Geraldine Breezeel, Bobby Hamlet, Magdalene Breezeel, Sheria Lee Thompson, Lou Etta Wood, Mary Wood, William L. Woods and Athen Woods.

CARD OF THANKS

We wish to express our heartfelt thanks and appreciation for each act of kindness, words and messages of comfort and personal assistance, the beautiful floral offering received from our kind relatives, friends and neighbors, in our recent bereavement in the great loss of our beloved husband and father, W. Lee Sheppard.

Especially do we wish to thank Bro. Paul J. Waller, for his comforting message. The choir, Mr. Fred Tittsworth for his assistance, the pallbearers, the doctors, the Filbeck-Cann Funeral Home and all who assisted us in any way. May the Lord's blessings rest upon each of you, is our prayer.

Mrs. Mae Sheppard and Children.

FORMER RESIDENT OF BENTON HERE ON VISIT

Mr. and Mrs. O. D. McKendree and daughter of Flint, Mich., were recent visitors in Benton. They were enroute to Henderson, Tenn., to attend a lecture program.

On Feb. 19, Mr. McKendree will be one of the guest speakers on the lecture program to be held at Florida Christian College, Tampa.

Mr. and Mrs. McKendree are former residents of Marshall County, and have resided for several years in Flint, where he is pastor of a Church of Christ.

OLD AGE ASSISTANCE FOR COUNTY IS \$13,575

Old Age Assistance in Marshall County during December amounted to \$13,575, the state Department of Economic Security reported last week.

Aid to dependent children amounted to \$4,186, and aid to needy blind was \$128. Total Public assistance for the county amounted to \$17,883.

Total public assistance payments for the entire state during December amounted to \$3,341,632. Average Old Age Assistance amounted to \$35.03 for each person.

CARD OF THANKS

We wish to express our thanks and appreciation to all our friends and neighbors for their comforting words and deeds of kindness during the illness and death of our loving husband and father, Marion Lee Holley, especially do we want to thank the quartet for the beautiful songs and to the ones who donated the flowers, foods. We wish to thank Revs. T. L. Campbell and J. J. Gough for their comforting message, Filbeck and Cann for excellent service. May God's richest blessings be with you all in our prayer.

Mrs. Rose Holley and children

MEETING AT KENLAKE FOR TAX OFFICER CANDIDATES

An orientation meeting for prospective candidates for the office of tax commissioner will be held at Kenlake Hotel on Jan. 19 and 20.

Other meetings will be held throughout the state. These meetings are open to the public and are preliminary to the holding of qualifying examinations in each congressional district on Feb. 18.

Any person desiring to be a candidate must pass this examination before his name can be placed on the ballot.

CARD OF THANKS

The residents of the Marshall County Farm wish to thank publicly the following organizations and persons who were so generous to them at Christmas time:

Fred Tittsworth, Mr. and Mrs. Sewell of Calvert City, Mr. and Mrs. Bess Hill, Fitzgerald grocery, Mr. and Mrs. Archie O'Dell, Mr. and Mrs. Albert Lee, Mr. and Mrs. Q. R. Fleming, Mr. and Mrs. S. T. Adair, Mrs. Sargent and ladies from Sharpe.

Linn Funeral Home, Maple Springs Methodist Church, Mt. Carmel Methodist Church, Har-

din Methodist Church, New Zion Baptist Church, Calvert City Baptist Church, Calvert City Methodist Church, Benton Methodist Church, Altoona Baptist Church, and Vaughan's Chapel Missionary Auxiliary.

We feel sure the Lord will bless you fourfold for your kindness.

Mr. and Mrs. R. A. Smith, Caretakers.

FOR SALE
Good Used Electric Refrigerators & Washers.
1-Used Kerosene Refrigerator.
FLEMING FURN. CO.

WANTED - Woman to do house-keeping work; easy work, short hours, good pay. Apply at Courier at once.

Hawkins Jewelry

SAME
PRICE,
CASH or
CREDIT

WATCH REPAIRING
Diamonds - Watches - Silverware
GIFTS FOR EVERY OCCASION

CITY HALL
BUILDING
PHONE
5532

11th and Main St.

Benton, Ky.

LINN FUNERAL HOME

Where the Best in Funeral and Ambulance Service
Cost So Little. Three ambulances available,
equipped with Oxygen

AT YOUR SERVICE DAY OR NIGHT
Air conditioned for your comfort

Phone 2921 - Benton, Ky. - 297 Main

HEADQUARTERS FOR ...

Bicycles, Cushman Scooters, Mustang Motorcycles,
and Bike Motors.

LAWN MOWERS SHARPENED AND REPAIRED
We Service What We Sell

RASCHE'S CYCLE SHOP

312 South 4th Street

Let's Get Acquainted



LEE SCARBROUGH

Scarbrough, Bu was born in nington, Texas, and Mrs. C. P. S. says he is the "in his family, born in Calloway parents now reside

is a graduate School at Paris State College, n, Ky.

World War 2, L. gunner on a B-1 Air Force in No Italy. He was disc with the rank of low is a second e reserves.

er the war, he cick district sales manager at El Pa Phoenix, Ariz.

established the ch Buick Co. her 52, the first Buick Marshall County.

1947, he married Short of Greenw are the parents ter, Patricia. is a member of the Loyal O and the First

is an avid foot ball fan and like now that he is participate in t

PRICED LOW!

For Easier, Speedier Cooking!

For "Plus Feature" Gas Ranges!

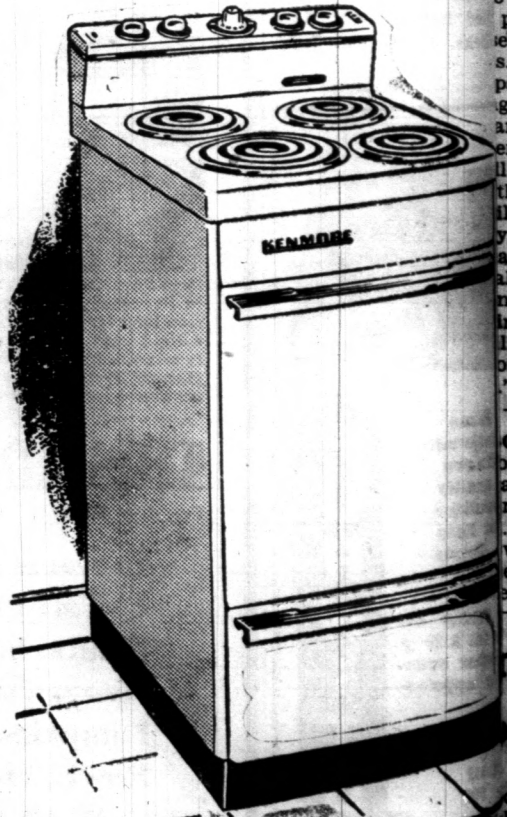
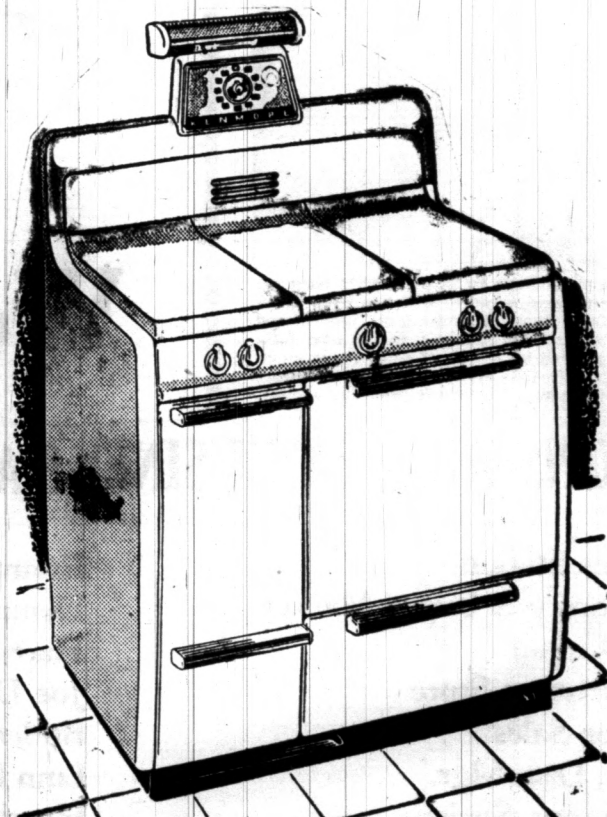
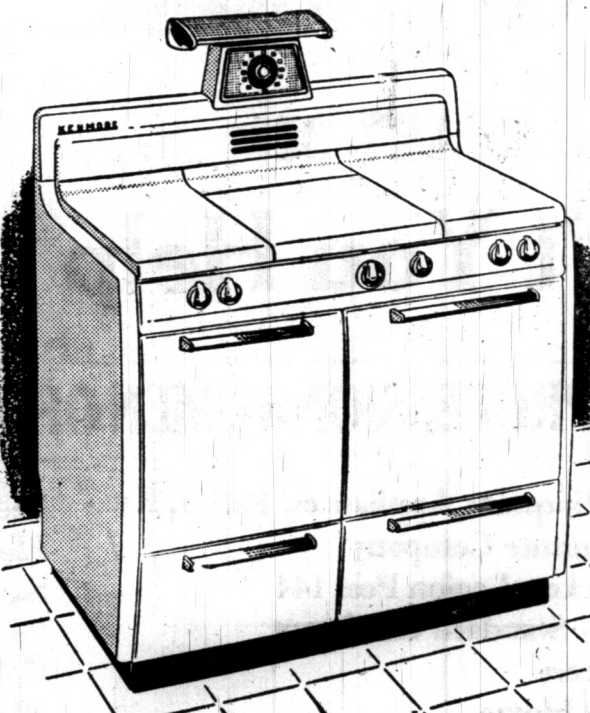
Kenmore Range

1399

Only 5.00 Down, Balance on Sears Easy Payment Plan

(Usual carrying charge)

For beautifully cooked meals on a smaller budget... get Kenmore! Features porcelain enamel steel burners that light automatically. Thermo-Disc units that cook faster, better! Giant "oven sized" oven is porcelain enameled, holds largest turkeys. Automatic Ken-Timer! Adjustable non-smoke broiler cooking char-coal type steaks, chops. Clean-in-a-wink porcelain top provides extra work space, handy drawer for plenty of pan storage! Compare the features... Sears low price money with Kenmore!



Full Size Kenmore Range

With Ken-Timer and Lamp

159.95

5.00 Down

Big Kenmore gas range with new styling for added beauty in your kitchen! Big porcelain enamel oven and automatic timer! Giant-size griddle! Save more with Kenmore!

36-In. Kenmore Range

Has 20-Inch Oven

129.95

5.00 Down

Giant 20-inch wide oven is same as ovens in big Kenmore. Shallow oven pan catches spill-overs, Non-smoke glide-out broiler... big storage section. Get Kenmore... and save!

Electric Rangette

Ideal for Apartments

159.95

Has four top burners... oven thermostat... light... drawer... outlet. Ideal for apartments. At Sears low price. Save with Kenmore.

BENTON THEATRE

BENTON KENTUCKY

"GREATER MOVIES ARE COMING YOUR WAY"

LAST TIMES TODAY - FRIDAY JAN. 16

ERROL MAUREEN Spectacular adventure in Madagascar
FLYNN OHARA AGAINST ALL FLAGS
COLOR BY TECHNICOLOR

SATURDAY - DOUBLE FEATURE - JAN. 17

GENES IN A SHOWDOWN WITH SINGING STAGE BANDITS!

GENE AURIY

A screenful of luscious dames!

A Tale of Five Women

CHAPT. 7 "BLACKHAWK"

SUNDAY AND MONDAY JANUARY 18-19

So New - Illustrations Are Not Available -

"HAPPY-TIME"

STARRING - Charles Boyer - Plus All Star Cast

DON'T MISS THE COMEDY - Sensation Of The Year!

TUESDAY - WEDNESDAY JAN. 20-21

GEORGE RAFT in

LOAN SHARK

BLOOD-MONEY MOB

Exposed!

SPECIAL !!! 2 DAYS ONLY
STARTS THURSDAY - JANUARY 22

THE HARLEM GLOBETROTTERS

with THOMAS DOWSE
DOROTHY BARNHART - BILL WALKER

THE TEAM THAT MADE BASKETBALL FUNNY... FAMOUS ...AND FOR THE WHOLE FAMILY!

TWENTY MILLION FANS CAN'T BE WRONG!

A COLUMBIA PICTURE

Satisfaction Guaranteed or Your Money Back

SEARS

Use Sears Easy Payment Plan

Paducah Kentucky 223 Broadway Phone 2-3551