



MURRAY STATE
UNIVERSITY

Murray State's Digital Commons

Marshall Courier

Newspapers

11-5-1953

The Marshall Courier, November 5, 1953

The Marshall Courier

Follow this and additional works at: <https://digitalcommons.murraystate.edu/mc>

Recommended Citation

The Marshall Courier, "The Marshall Courier, November 5, 1953" (1953). *Marshall Courier*. 212.
<https://digitalcommons.murraystate.edu/mc/212>

This Newspaper is brought to you for free and open access by the Newspapers at Murray State's Digital Commons. It has been accepted for inclusion in Marshall Courier by an authorized administrator of Murray State's Digital Commons. For more information, please contact msu.digitalcommons@murraystate.edu.

RECT FACTORY PUR
Tro-lite
E LUGGAGE

26" PULLMAN
NITE

COMPLETE
3-PIECE SET
\$32.95
Plus Fed. Tax
NO MONEY DOWN
Only 1/2 A Week

DIAMOND JEWELRY
PEREL & LOWENSTEIN
Diamond Store of the South

IALS
FESTIVAL
3.95

Club Aluminum
DINNERWARE SETS
A very good value
YOU MUST SEE THEM

Many other Items Too many
to mention.
SAVINGS UP TO 50%
On Living Room Furniture

Room Furniture

ALL ADULTS
Oct. 23 to Friday Nov.
the person holding
beautiful COLONIAL

Ridgeway
Kentucky

Bought
Only
Needy

reduced prices in the
emergency program will
only to farmers in
drought disaster coun
basic founda
to farmers "not in fi
to buy feed at
market prices" and
less than a 30-day feed
on hand. Everett Treas
of Marshall County
Committee, said this

At
Benton, Ky.

GET THE
BEST

GET

point

You Can Get
A Better Deal
At

ERVIN POE'S
In Palma
MANUEL WRIGHT
In Calvert City
RADIO SERVICE CENTER
Benton, Ky.

As important as the

FOUNDATION

to a house, is a good

BASE-STOCK

to gasoline performance

SUPERIOR performance and public acceptance
of Crown EXTRA Gasoline is due to its base stock,
changed to fit the seasons; plus these seven high-per-
formance qualities so necessary to correctly-balanced
premium gasoline:

- Quick starting
- Fast warm-up
- High anti-knock
- Full power
- Clean engine operation
- Long mileage
- Vapor-lock prevention

15-Crown EXTRA Gasoline for 30 days! You
will get the finer performance you expect, and
know why it is the leader in its field!



STANDARD OIL COMPANY (KENTUCKY)

Benton, The Best
• Town in Ky. •
By A Dam Site

Volume XVII Paid Circulation Sells — That Is The
Kind This Newspaper Offers Customers

Benton V
YOU CAN get new photo-
graphs at Crown Furniture Co.
Get the latest — Get them new.
308 North Main
Benton, Ky.
Phone 2061

VENETIAN BLINDS
AND AWNINGS
Also Wood Shades.
See
C. C. HUNT
Phone 6871 Benton

FOR SALE - Second sheets, both
regular and legal size, onion
skin or yellow paper. MARSH-
ALL COURIER.

FOR SALE - Used Duo-Therm
Oil Heater with blower. Will
heat 5 rooms. Good condition.
\$40. Phone R. C. Riley 3701.
21rsc

WILL KEEP children in my
home, days, while mothers work.
Mrs. R. C. Harmon, Briensburg,
Ky. 2tp

FOR SALE - One Angora Buck,
3 years old. Also have registered
Nubian Buck for Stud service
T. G. Harris, Calvert City Route
2. 24p

FOR SALE - Hot blast heating
stove \$15.52 sink, \$25. Elec-
tric Singer sewing machine \$40.
Sawmill, \$200. See Noble Marsh-
all, West Gilbertsville, or write
him at Calvert City Route 2.
23p

SALESMAN WANTED - Raw-
leigh dealer needed for nearby
county with 1500 families where
products sold many years. Real
opportunity for permanent,
profitable work. Start promptly.
Write Rawleigh's Dept. KYJ-921
-232, Freeport, Ill. 23p

FOR SALE - Two good Winter
all-wool suits. Size 37 & 39. See
Marshall Wyatt at Courier.

J. D. Cross of Route 5 was a
business visitor in Benton Fri-
day.

The Marshall

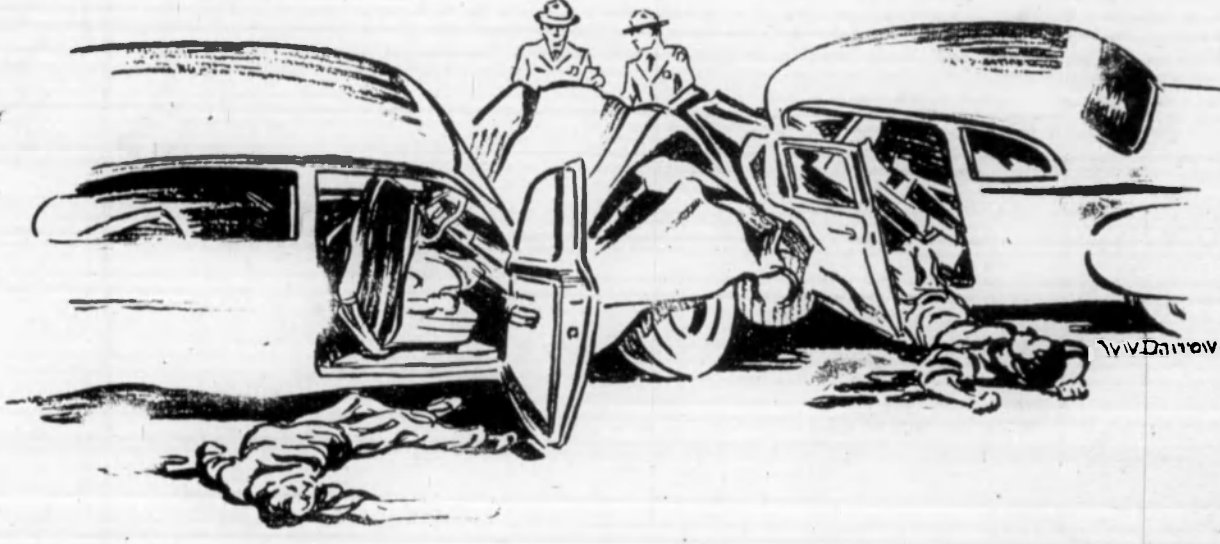
Western Kentucky's Largest Weekly Newspaper — Benton and Marshall Coun.

There is no substitute for style and quality
Special SALE

Benton Ky., November 5, 1953
Will finance. See Marshall Wyatt, nut St., Phone 5982.

PEEL'S
JEWELRY — LOANS
FINE JEWELRY — LUGGAGE — (LOANS)
on anything of value
— OUR NEW LOCATION —
409 B'Way — Paducah, Ky.

COAL SAVE
SEE or WRITE
ERNEST LINDSEY
Benton Rt. 6 at
Griggstown
Any Type Coal
Prices Right
also general hauling



DEADLY WEEK-ENDS

Pleasure time is no time for accidents and sudden death, but unfor-
tunately that is when the grim specter works overtime.

On the average week-end about 290 persons are killed and more than
13,600 injured. In a year's time, week-end and holiday casualties climb to
the numbing total of 15,000 dead, 750,000 injured, or about 41 percent of all
lives lost annually in traffic accidents.

With a week-end or holiday coming up, families and vacation parties
swarm the roads to places of recreation, traffic is congested, driving strain
increased—and then the fatal count begins.

Millions of good, bad and indifferent drivers speeding, cutting in, weav-
ing, ignoring the rules of courtesy, challenging traffic controls, provide the
lethal ingredients for crashing and killing. Add to this the potion of the
drinking driver and the mixture is deadly.

When you plan week-end driving be doubly cautious. Try to avoid peak
hours of travel and congested routes. Start early, return before or after
the rush. Watch your driving, keep your temper, don't contest the right-of-
way—and watch the other driver!

Slow down—take a little longer and bring your family home alive.



SLOW DOWN—LIVES ARE IN YOUR HANDS!

- Phillips Chevrolet Co.
- Kinney Motor Co.
- Filbeck & Cann
Phone 4681 Benton, Ky.
- Treas Lumber Co.
- Miller Auto Parts
- Butler's Grocery
- Bank of Marshall County

- Meadows Bros. Locker Plant
- Holmes Service Station
- Morgan, Trevathan & Gunn
INSURANCE AGENCY
- Hutchens Style-Mart Store
- Peerless Cleaners
- Sledd's Texaco Service
- National Stores

- Tanner IGA Super Market
"Large Enough To Serve You —
Small Enough To Appreciate You"
- Crown Furniture Co.
308 N. Main Benton, Ky.
- Bank of Benton
- Benton Service Station
STANDARD OIL PRODUCTS
- Lampkins Motor Sales

REAP A HARVEST OF REAL SAVINGS
DURING OUR **Harvest Sale**
NOW GOING ON

DON'T
MISS THE
BIG



BY
SHOPPING
HERE!

WE'VE A WORLD OF GOOD
BUYS FOR WINTER COMFORT

ELECTRIC HEATERS

WESTINGHOUSE Built-Ins Or
Small Portables
Small Utility
Heaters



See Us Also For All Types
Guns And Ammunition, Fishing
Equipment And Sporting Goods
COMPLETE BATHROOM



Equipment, White and Colored

T-V SETS

Reduced

To

COST plus FREIGHT
ONLY 2 LEFT
HURRY NOW!

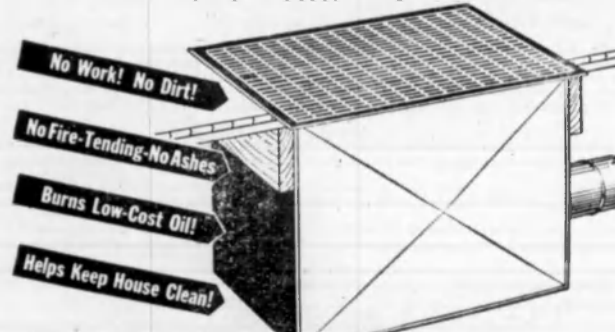


BENTON SPORTS CENTER

DON'T LET WINTER CATCH YOU
UNPREPARED . . .

Coleman OIL Floor Furnace

Heat Your Home Better! AUTOMATICALLY!



See The New
Coleman OIL Floor Furnace

LOW IN PRICE!
LOW OPERATING COST!
at CONVENIENT TERMS!

REMEMBER — We have the
correct size to heat your home.

DON'T SETTLE FOR LESS
GET THE BEST

AT NO EXTRA COST

Complete YOUNGSTOWN KITCHENS

Save steps, save money, save time, by buying
the BEST for your Kitchen. Pieces may be
bought singly or as a group.

- Kitchen Sinks
- Base Cabinets
- Storage Cabinets
- Wall Cabinets

Prices On Request

Before Winter Sets In . . . Install BATHROOM FIXTURES by the piece or save by buying COMPLETE BATH UNITS

In Pastel Colors or White

WORLD FAMOUS
FAIRBANKS - MORSE PUMPS

MILLER - JOHNSON CO.

CALVERT CITY — Phone 4201

FREE ESTIMATES

BENTON — Phone 4452

SPECIAL TOP QUALITY **Tro-lite** AIRPLANE LUGGAGE

Make this winter a comfortable winter by pre-
paring your home for oncoming cold weather
now! Use the message of the reliable dealers rep-
resented on this page as your handy reference to
all the services you will need. Depend on their long
years of successful experience as your guide to comfort.



ELECTRICAL SUPPLIES at WHOLESALE

We Are Direct Factory
Distributors For

- CAVALIER Heaters & Floor
Furnaces.
 - JACKSON Water Heaters &
Floor Furnaces.
- We Buy All Materials For House
Wiring Direct From The Factory

THOS. MORGAN CO.
Benton Kentucky

BIG SMITH WINTER WORK CLOTHES VALUE

MEN'S WINTER LINED
JUMPERS
4.95 and 5.95

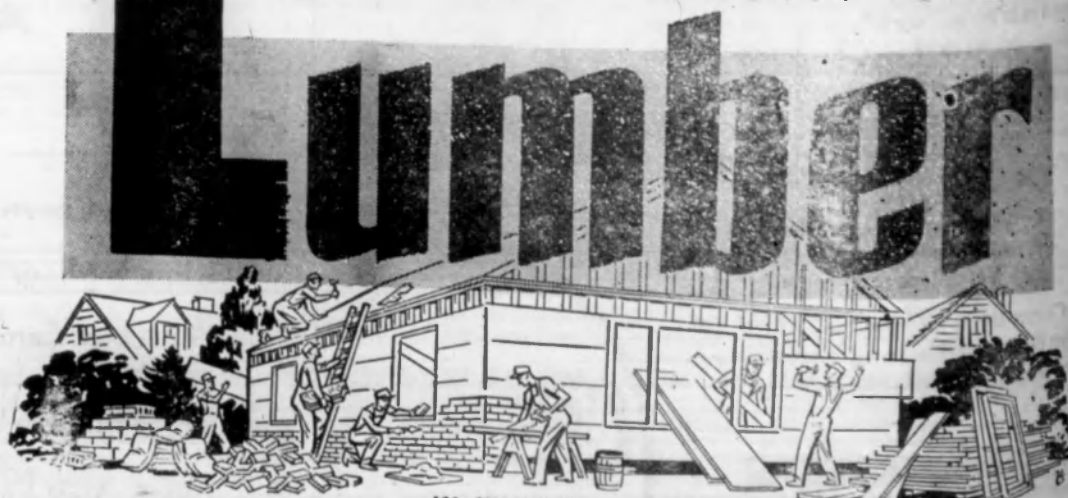
MEN'S BIG SMITH
DUNGAREES
2.98

BIG SMITH
CARPENTER OVERALLS
NEW SHIPMENT OF BUCKAROO WESTERN
BOYS BUCKAROO WESTERN
MEN'S BIG SMITH
WESTERN JEANS
BOYS REGULAR
BIG SMITH JEANS 1.98 &
LADIES and MISSES
ZIPPER JEANS 2.59 &

MORGAN'S
Benton Kentucky



WITH QUALITY
BUILDING MATERIALS AND



TREAS LUMBER CO.

Brought
Only
or Needy

At reduced prices in the
emergency program will
be available only to farmers in
designated drought disaster coun-
ties. Basic founda-
tion feedings of flocks and will be
made to farmers "not in fi-
nancial position to buy feed at
market prices" and
less than a 30-day feed
on hand. Everett Treas,
Marshall County
Committee, said this

The drought emergency feed-
ing program was designed for bona-
fide farmers and the feeds will
be available only for the pur-
pose of maintaining basic founda-
tion feedings of flocks and goats.
That will be available
to farmers in the designa-
ted counties are corn at \$1
per bushel, oats at 50 cents per
bushel, feed wheat at \$1.10 per
bushel and cottonseed meal at
\$1.10 per ton.
Conditions vary from county
to county, from farm to farm.
The operator to operator
in the area, hence, it was
deemed that the local drought
committees can best determine
the eligibility of the individual.

Marshall drought com-
mittee was composed of Eve-
rett Treas, Homer Miller, George
Miller and Paul Darnall.
Applications for these feeds
will be filed at Marshall County
office.

There's Tim
Seed Whea

by J. HOMER MILLER
County Farm Agent
It is time to seed wheat
this winter. It may not
be much grazing for the
pasture before the
pastures green up.
The Farm and Home Planning
program will start Saturday
at the Community Build-
ing. There are more than 20
farmers that have signed up for
the program this year. Mead-
ow starts at 10 a. m.
Prices are high this year
and relatively cheap. Pig
cost per pound of foot
may be at \$30 per ton cost
per pound of feed, and cor-
n cost per bushel costs \$2.75
the cost.
Molasses may help in the
cost. Six and one half gal-
lons of molasses is equal to

Turkey Shoot
Will Be Held
Lions Club

Turkey shoot will be held at
City Park on Nov. 12
and 14. The shoot is being
sponsored by the Lions Club.
There will be clay pigeons
and fill shots.
Hours will be as fol-
lows:
Monday, Nov. 12, 4:30 p. m.
to 8 p. m.
Tuesday, Nov. 13, 4:30 p. m. to
8 p. m.
Wednesday, Nov. 14, 10 a. m. to
2 p. m.
There will be plenty of tur-
key for everyone and the pub-
lic is invited to participate in
the annual Lions Club event.

Mrs. Clarence Thompson and her two daughters were among the visitors in Benton Saturday. Mrs. Talmadge Riley and her family were visitors in Benton Saturday.



Loftie

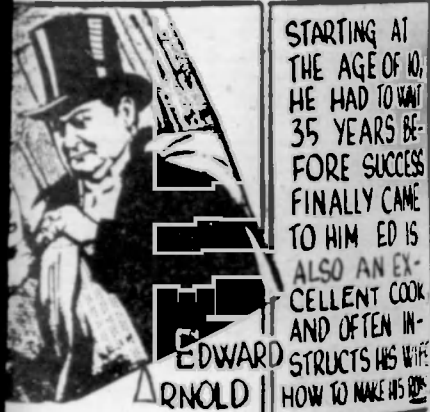
THE NEW CUSTOM-LOOK

100% woolen chenille suit with shimmering golden threads and finished with a wealth of details. In off-white, turquoise, or navy. Sizes 16 to 18.

Advised in Modern



By TONI ROSSETT



By S. M. JONES



REAP A HARVEST OF REAL SAVINGS

HARVEST Sale

HERE ARE A FEW OF THE VALUES IF YOU BUY NOW

- **SIMMONS HOLLYWOOD BED OUTFIT**
Complete with Boxspring and Innerspring Mattress Headboard, Plastic covered, choice of colors only \$69.00
- **BIGELOW CARPETING**
12 ft. width Broadloom - color beautiful beige - scroll pattern - Regular \$8.95 value, only \$4.95 sq. yd.
- **ALL WOOL FACE CARPETING - 9 FT. Width**
Choice of wine, green, grey, tan, Regular \$4.95 value - only \$2.95
- **SOFA BED - COIL SPRINGS**
Choice of colors, only \$59.50
- **BED ROOM SUITE**
Choice of modern or poster suite, Box spring and and Innerspring Mattress, complete, only \$159
- **FREE - KENMAR LOUNGE CHAIR** as our prize in Harvest Festival - Stop in and get details.

RHODES-BURFORD CO.

Mayfield, Ky. - Open Friday night until 8:30 p. m.

ANDERSON'S HARVEST SALE

A Harvest Of Values Is Yours For The Making!

Woolens yd. \$2.00 - \$3.00
54 to 60 Inches Wide

Woolens yd. \$2.00 - \$3.00
54 to 60 Inches Wide

Woolens yd. \$2.00 - \$3.00
54 to 60 Inches Wide

Woolens yd. \$2.00 - \$3.00
54 to 60 Inches Wide

Woolens yd. \$2.00 - \$3.00
54 to 60 Inches Wide

Woolens yd. \$2.00 - \$3.00
54 to 60 Inches Wide

Woolens yd. \$2.00 - \$3.00
54 to 60 Inches Wide

Woolens yd. \$2.00 - \$3.00
54 to 60 Inches Wide

Woolens yd. \$2.00 - \$3.00
54 to 60 Inches Wide

Woolens yd. \$2.00 - \$3.00
54 to 60 Inches Wide

Woolens yd. \$2.00 - \$3.00
54 to 60 Inches Wide

Woolens yd. \$2.00 - \$3.00
54 to 60 Inches Wide

Woolens yd. \$2.00 - \$3.00
54 to 60 Inches Wide

Woolens yd. \$2.00 - \$3.00
54 to 60 Inches Wide

Woolens yd. \$2.00 - \$3.00
54 to 60 Inches Wide

Woolens yd. \$2.00 - \$3.00
54 to 60 Inches Wide

Woolens yd. \$2.00 - \$3.00
54 to 60 Inches Wide

Woolens yd. \$2.00 - \$3.00
54 to 60 Inches Wide

Woolens yd. \$2.00 - \$3.00
54 to 60 Inches Wide

Woolens yd. \$2.00 - \$3.00
54 to 60 Inches Wide

Woolens yd. \$2.00 - \$3.00
54 to 60 Inches Wide

Woolens yd. \$2.00 - \$3.00
54 to 60 Inches Wide

Woolens yd. \$2.00 - \$3.00
54 to 60 Inches Wide

Woolens yd. \$2.00 - \$3.00
54 to 60 Inches Wide

Woolens yd. \$2.00 - \$3.00
54 to 60 Inches Wide

Woolens yd. \$2.00 - \$3.00
54 to 60 Inches Wide

Woolens yd. \$2.00 - \$3.00
54 to 60 Inches Wide

Woolens yd. \$2.00 - \$3.00
54 to 60 Inches Wide

Woolens yd. \$2.00 - \$3.00
54 to 60 Inches Wide

Woolens yd. \$2.00 - \$3.00
54 to 60 Inches Wide

Woolens yd. \$2.00 - \$3.00
54 to 60 Inches Wide

Woolens yd. \$2.00 - \$3.00
54 to 60 Inches Wide

Woolens yd. \$2.00 - \$3.00
54 to 60 Inches Wide

Woolens yd. \$2.00 - \$3.00
54 to 60 Inches Wide

Woolens yd. \$2.00 - \$3.00
54 to 60 Inches Wide

Woolens yd. \$2.00 - \$3.00
54 to 60 Inches Wide

HARVEST FESTIVAL BONUS VALUES

- 4 TOWELS \$1.00
- 81x99 SHEETS, 128 Count \$1.99
- 7 WASH CLOTHS \$1.00
- 2 WHITE TOWELS, Large Size \$1.00

ANDERSON & SON

SOUTH SIDE SQUARE

MAYFIELD, KY.

DON'T MISS THE BIG

HARVEST DAYS

NOW GOING ON IN MAYFIELD

OVER \$4,000 IN FREE PRIZES

COME AND SEE

Perel & Lowenstein's DIRECT DIAMOND IMPORT SALE



Perel & Lowenstein
THE DIAMOND STORE OF THE SOUTH
121 S. SEVENTH ST. MAYFIELD, KY.

SPECIALS For HARVEST FESTIVAL

Set Of 3
MAHOGANY TABLES \$4250
Cocktail and 2 End Tables
Regular Value \$60.00

Beautiful Assorted Colors
PLATFORM ROCKERS
Full Size
\$29.95 Value \$19.95

Club Aluminum
DINNERWARE SETS
A very good value
YOU MUST SEE THEM

Bates
BED SPREADS
Values to \$9.95
\$4.95 and \$5.95

Many other Items Too numerous too mention.
SAVINGS UP To 50%
On Living Room Furniture

Substantial Savings on Bed Room Furniture

FREE TICKETS TO ALL ADULTS
Visiting our store from Friday Oct. 23 to Friday Nov. 6th at 12:00 noon - at which time the person holding the winning ticket will receive a beautiful COLONIAL TABLE LAMP valued at \$42.50.

Lochridge & Ridgeway

Mayfield

Kentucky

Read The O
DO YOU
A N



Then
STYLE
Many plans from
Ranch Type • 1 1/2
Bungalows—with
attached
• ELIMINATE W
sary to comple
We will erect your
erection by furnis
Finest quality mat
in the constructio
ed by one of the
homes.
Standard method
Building requirem
For complete info
ST
PAT
Route No. 1

Now—as little as **2²⁵** a day
for this all-new Ford Pickup



After minimum down pay-
ment, on 18 months-to-pay basis,
the all-new Ford F-100 Pickup
may cost you as little as \$2.25
a day!

Your old truck will make the
down payment a breeze...
may wipe it out entirely!
42% increase in Ford Truck
sales means we can offer you
an extra-generous
trade-in allowance!

World's most powerful Pickup!
With 106-h.p. Truck V-8, Ford Pickup is the
world's most powerful! Or—choose the world's
most efficient Six—101 Low-Friction horsepower.

**World's most comfortable! New
DRIVERIZED CAB! Only Ford has it!**
New curved one-piece windshield. New 4-ft. rear
window. Exclusive new seat shock absorbers!

More ways new for your money!
New hotted-construction, 45 cu. ft. Pickup box.
Choice of 5 transmissions! See it today!

FORD ECONOMY TRUCKS
SAVE TIME • SAVE MONEY • LAST LONGER

Kinney Motor Co.

Benton

Kentucky

Norma Jean Houser Becomes Bride Of Gilbertville Man

Mr. and Mrs. Loren Houser of Benton Route 3 announce the marriage of their only daughter, Norma Jean, to Charles Collins, son of Mr. and Mrs. Gilbert Collins of Gilbertville Route 1. The ceremony was performed in Corinth, Miss., Oct. 17. Their attendants were Jimmie Sue Cates and Joe Foust. The bride was attired in a gray suit with back trim and wore gray accessories. Miss Cates also wore gray. The bride is employed at the International Shoe Company and the groom at the I. C. Freight Co., in Paducah. At present they are residing in the home of Mr. and Mrs. Loren Houser on Benton Route 3.

FOLKLORE SOCIETY WILL MEET AT MURRAY STATE
MURRAY — Folklorists and teachers from at least five states will convene at Murray State College on Nov. 13 and 14 in a regional meeting of the American Folklore Society. The meeting, planned to be of assistance to the teacher in the high school, will have as its theme "How the School Teacher Can Use Folklore and Why." Participants will come from Kentucky, Tennessee, Illinois, Indiana and Ohio.

Tax Parker of Route 2 was in town Saturday on business.

Shaving Is Slicker—
Blade Changing Quicker

BUY Gillette
BLUE BLADES
IN HANDY DISPENSER

20 for 98¢ 10 for 49¢

SOCIAL and PERSONAL

Mrs. Fred Thompson of Oak Level was a visitor in Benton Saturday.

Mr. and Mrs. Roy Culp and granddaughters, Sandra Fay and Nell Ruth King of Gilbertville Route 1 were among the Saturday visitors in Benton. Mrs. Culp renewed the Marshall Courier while here.

Mr. and Mrs. Ernest Freeman and children of Hardin Route 1 were Saturday shopping visitors in Benton.

Mrs. Marvin Coursey of Benton Route 2 renewed her Marshall Courier while in Benton Saturday.

Mr. and Mrs. Buel Ray and daughter, Joetta of Murray were weekend visitors in Benton.

Mr. and Mrs. R. E. Dunn and children of Route 4 were shoppers in Benton Saturday.

Mr. and Mrs. Sam Gold of Route 5 were among the Saturday visitors in Benton.

Mr. and Mrs. Jack Harrison, Mr. and Mrs. Virgil Woods of Route 2 were Saturday visitors in Benton.

S. W. Cox of Route 3 was a business visitor in Benton Thursday.

H. V. Duckett of Calvert City was a business visitor in Benton Friday.

Lee Croly of the county was a visitor in Benton Saturday.

Mrs. Charlie Jones and daughters of Route 3 were Saturday visitors in Benton.

Tom Res Hill of Route 2 was a visitor in Benton Friday. Tom Res has recovered from a recent illness.

NO MONTHLY CRAMPS not even on the VERY FIRST

Doctors' tests show amazing preventive relief of pain, backaches, nervous feelings

Women and girls who suffer from the functionally-caused cramps, backaches and headaches due to menstruation—who feel upset and irritable on certain "particular days" every month—may be suffering quite needlessly!

Such is the conclusion from tests by doctors in which Lydia E. Pinkham's Vegetable Compound stopped or gave amazing relief of such distress in 3 out of 4 of the cases even on the very first and worst day of the period!

Yes! Medical evidence proves Lydia Pinkham's mod-

erns in action. It cures a remarkably alarming ailment on the very first day of the month—without the use of pain-reducing drugs!

The effectiveness of Lydia Pinkham's Compound is proven by the millions of women and girls whom it has benefited. It has been used for over 40 years and is still the most popular medicine for women's ailments.

Take Lydia Pinkham's Compound, or new Improved Tablets, with added Iron. Lydia Pinkham's is wonderful for "hot flashes" and other functional disorders of the "change of life," too!

Costs No
More Than
Ordinary
Soft Drinks

Welch's
FROZEN GRAPE JUICE

—It's Better for You!
LESS THAN 5¢ A GLASS

**FASTEST KNOWN RELIEF
FOR GAS ON STOMACH**

THANKS TO THE FASTEST KNOWN RELIEF FOR GAS ON STOMACH, you can get rid of the gas that causes discomfort and pain. This is the only medicine that contains the fastest-acting medicine known to doctors for the relief of gas on stomach. It is not a cathartic, and it does not cause any harm. It is the only medicine that contains the fastest-acting medicine known to doctors for the relief of gas on stomach. It is not a cathartic, and it does not cause any harm. It is the only medicine that contains the fastest-acting medicine known to doctors for the relief of gas on stomach. It is not a cathartic, and it does not cause any harm.

ARMISTICE

DAY

Wednesday
November 11th



That peace might encompass the world
and freedom endure — For this high
purpose the Unknown Soldier died. To-
day again, and for the same noble cause
another soldier has fallen on foreign
soil.

Armistice Day is a time for remembering... the supreme sacrifices of brave men, fighting to preserve our democratic way of life. Armistice Day is a time for dedicating ourselves anew to the ideals of Americanism for which so many gave so much upon battlefields that gird the world. Armistice Day is a time for firmly resolving that these noble sacrifices shall not have been in vain. It is a time for alerting ourselves to eternal vigilance against all enemies of freedom, everywhere... for renewing our determination to keep America forever strong... forever worthy of its heroes, whose memory we honor on Nov. 11.

We Will Be Closed On Armistice Day — November 11

Bank Of Benton
Bank Of Marshall County

Members F. D. I. C.



Heigh-Ho Santa! it's time for

**MORE TOYS! BETTER TOYS!
GREATER VARIETY OF TOYS**

FOR BOYS! FOR GIRLS!

You'll find many famous names in our store...
Lionel Trains, American Flyer Trains, Rita and
Horseman Dolls, many others too numerous to men-
tion.

Games of every description... including the newest
and for all ages.

Pre-School toys of all types
Model Toys, Erector Sets
Bicycles, Tricycles
Walking Dolls
Fire Trucks, Road Graders
Wheel Toys, Dump Trucks
Chemistry Sets
Airplanes, Cars
Nurses' Outfits, Doctor Kits
Guns, Cowboy Outfits

Use Our Lay-Away Plan!

Make your selection now! Early! Pay a part down and let us
hold your purchase until you are ready for it at Christmas time.

SARGENT PAINT STORE

311 KENTUCKY AVENUE

PADUCAH, KY.

WANT ADS

4-room furnished, private bath. Also bath. Entrance. Adults only. Benton 5152. 25p 6p

INN FUNERAL

Where the Best in Funeral Service is at Your Service. Air conditioned facilities. Benton, Ky.

NOW!

totp

You C
A Better
A
ERVIN
In P
MANUEL
In Cal
RADIO SERV
Benton



CROW
EXT

STANDARD

WANT ADS

TO BUY
 4-room furnished, FOR RENT - 5 room house with private bath. Also bath, hot and cold water. Rent \$100.00. Adults only. Is reasonable. Paul Moser. Phone 251 6905.

INN FUNERAL HOME

What is the Best in Funeral and Ambulance Service? Call So Little. Three ambulances available, two equipped with Oxygen.
AT YOUR SERVICE DAY OR NIGHT
 Air conditioned for your comfort.
 Benton, Ky. — 247 Main Street

NOW! GET THE BEST

Hotpoint

You Can Get A Better Deal At
ERVIN POE'S
 In Palma
 MANUEL WRIGHT
 In Calvert City
 RADIO SERVICE CENTER
 Benton, Ky.

the LEADER in its class!

Year after year, CROWN EXTRA is the largest-selling premium gasoline in the area served by Standard Oil dealers

THIS POPULAR preference can only be due to continuous confidence in this Company and its Dealers—their long record of delivering superior products!

The extra qualities of CROWN EXTRA Gasoline, refined in the South to fit southern driving conditions, begin with its superior base-stock which for years has been changed to fit the seasons. It has the correct balance of all seven high performance qualities:

- Quick starting
- Full power
- Fast warm-up
- Clean engine operation
- High anti-knock
- Long mileage
- Vapor-lock prevention

For all the extra performance you expect from a premium gasoline try CROWN EXTRA for 30 days!



STANDARD OIL COMPANY (KENTUCKY)

TO SELL TO RENT TO TRADE TO HIRE

FOR SALE
 • Grocery Equipment
 • 10-foot Frikidair meat display case
 • 4 push carts
 • Sausage mill
 • Check-out cash register
 • Glass show case
 • Meat slicer
 • 3 pair scales
 All these items can be bought at real bargain prices. —See Them At—
KINNEY Appliance Co.

LOTS FOR SALE on West 13th Street, 2 blocks from school. City water and sewers. J. Pete Ely at Post Office. b46 rise

NOW YOU CAN get new phonorecords at Crown Furniture Co. Get the latest — Get them new. 308 North Main. Phone 2061. Benton, Ky.

VENETIAN BLINDS AND AWNINGS
 Bamboo Shades and Draperies Also Wood Shades
 See
C. C. HUNT
 Phone 6871 Benton

FOR SALE — Second sheets, both regular and legal size, onion skin or yellow paper. MARSHALL COURIER.

FOR SALE — Two good Winter all-wool suits. Size 37 & 39. See Marshall Wyatt at Courier.

LOST — Four black angus calves, now running wild between Elva and Benton in River bottoms. Notify Jewell or Cecil Minter, Elva Route 1. 25p

NOTICE
 I am now selling Mason shoes direct from the factory to your home. These are good shoes and I can save you money on your shoe bills. Barney K. Farner, Route 5, Benton, Ky. 25p

HOUSE FOR RENT — 5 rooms, hot and cold water. Located at Fairdale. Apply at Brown's Grocery. Fairdale. 25p

ASTHMA COUGHS
 Don't let chronic coughing and wheezing...
BACKACHE?
 If you are bothered by back aching...
 Ask your druggist about CYSTEX today.

FOR SALE — Typewriter ribbons for all models. Also good supply of carbon paper. MARSHALL COURIER.

FOR RENT — 5-room house in Little Bear Creek addition. \$25 month. See Mr. or Mrs. Bob Simmons.

FOR SALE — 1950 4-door Buick — Radio, heater, dynaflo, excellent condition. Priced right. Will finance. See Marshall Wyatt.

PEEL'S JEWELRY — LOANS
 FINE JEWELRY — LUGGAGE — LOANS
 on anything of value
 — OUR NEW LOCATION —
 209 B'Way — Paducah, Ky.

IF IT'S FURNITURE YOU NEED
 Modern, Stylish, Durable Furniture At Reasonable Prices. Then See Our Line.

LOCHRIDGE & RIDGWAY
 "The Old Reliable"
 Mayfield Kentucky

HEADQUARTERS FOR ...
 Harley, Custom Suits, Making, Alterations, etc.
 LARK BOWERS SHAWNEE AND SHAWNEE
 We Service What We Sell
RASCHE'S CYCLE SHOP
 112 South 4th Street Paducah, Ky.



**Driving is NOT a right ---
 You Can Be RULED OFF THE ROAD**

When you put the plates on your car and the driver's license in your wallet, you have met your state's requirements to drive. Without these, your time on the highway would be short-lived. It is the Motor Vehicle Department's way of saying, "So far as we can tell, you should be permitted to drive."

But from then on it is up to you. Respect the law and the rules of the road, drive so as not to endanger your life or the lives of others, and you may continue to drive. But—

Those licenses are not a right—they are merely *qualified permission*. They do not say you can weave over the highways intoxicated; that you can drive at dangerous speeds; or that you can commit any act that may endanger the public safety. You can't get away with it. Continued bad driving habits, sooner or later, will rule you off the road.

In one year 600,000 drivers had their licenses suspended or revoked—every third one for intoxication. Speeding and recklessness were also high on the list.

Remember—driving is not a right; it is a license which if abused can be withdrawn. Respect it and continue to drive—safely, sanely.



SLOW DOWN—LIVES ARE IN YOUR HANDS!

- | | | |
|--------------------------|----------------------------|---|
| Phillips Chevrolet Co. | Meadows Bros. Locker Plant | Tanner IGA Super Market |
| Kinney Motor Co. | Holmes Service Station | "Large Enough To Serve You —
Small Enough To Appreciate You" |
| Filbeck & Cann | Morgan, Trevathan & Gunn | Crown Furniture Co. |
| Phone 4681 — Benton, Ky. | INSURANCE AGENCY | 308 N. Main — Benton, Ky. |
| Treas Lumber Co. | Hutchens Style-Mart Store | Bank of Benton |
| Miller Auto Parts | Peerless Cleaners | Benton Service Station |
| Butler's Grocery | Sledd's Texaco Service | STANDARD OIL PRODUCTS |
| Bank of Marshall County | National Stores | Lampkins Motor Sales |

Child's Headache Must Not be Taken Lightly

It begins with three words spoken by a child: "My head hurts."

That's the time for the detective squad to move in. A child's headache is never to be taken lightly.

The most common causes of headache in children are allergy, digestive upsets, respiratory infection, and emotional or nervous tension. A headache may be an early symptom of measles, chicken pox, or whooping cough. A severe, persistent pain at the base of the skull may mean meningitis or polio. Eyestrain is another possibility.

The line-up of suspects is long. The first thing to be done in the course of the investigation is to put the child to bed promptly and watch him carefully for the next few hours. If an infection is on the way, other symptoms will soon appear. When these are reported to the doctor, he will know whether or not he

Laugh and the World

The woman who used to run home to mother the minute she had trouble with her husband now has a daughter who runs to her lawyer.

What is a home newspaper? It is a home town institution which grows with you prosper with you, grieves with you, rejoices with you. In short, a home town newspaper is the history of the normal life of a normal community. — Buffalo (S. Dak.) Times-Herald.

ease tension. Every effort must be made to keep the child's life on an even, low-pressure plan. He may need more understanding and love and a greater feeling of being secure at home, at school and among his playmates. When these needs are filled it is likely that the headaches will decrease and eventually vanish.

Dept. Of Commerce Offices Are Moved

In order that business and industry in the State of Kentucky may have readily available the services of the U. S. Department of Commerce, the entire state has now been assigned to the Cincinnati district office of the Department of Commerce.

In an endeavor to secure a more economical operation, a number of Commerce Department Field Offices were closed the latter part of July. Among the offices closed was Louisville.

The Department makes available information for market research studies, technical data for manufacturers, sources for Government contracts, how to establish a business, development of an industrial area, sending a gift package abroad, and a complete service on the development of import and export business.

Businessmen of Kentucky are cordially invited to avail themselves of the services and facilities of the Cincinnati office, located in Room 755 of the U. S. Postoffice, Cincinnati 2, Ohio.

Don't Miss the Greatest Sale-10th Anniversary

YES IT'S BEEN 7 GREAT YEARS AND WE'RE CELEBRATING WITH TREMENDOUS VALUES ALL OVER OUR STORE:

Men's 7th Anniversary

SUIT SALE

On All Men's 100% Wool SUITS	WERE	NOW
All New — Reg. Stock	\$29.50	\$22.50
Suits In All Sizes And Colors	\$34.50	\$27.50
	\$39.50	\$32.50
	\$45.00	\$38.00
	\$49.50	\$42.50
BUY NOW & SAVE	\$55.00	\$48.00

Men's 7th Anniversary

TOPCOAT SALE



Men's Rayon DuPont Zelan Treated TOPCOATS SPECIAL \$15.00

Men's Wool and Rayon Gabardine TOPCOATS \$24.50

Men's All Wool Gabardine TOPCOATS \$29.50 TO \$34.50

MEN'S 100% ALL WOOL SPORT COATS In Plaids — Checks — Solids Regulars, Shorts Longs 19.50 Value \$15.00

MEN'S REGULAR 22.50 SPORT COATS Cashmere Wool, Hairline, Grey, Blue Flannels, Tan Flannels. All Sizes \$17.00

MEN'S 100% FUR FELT CHAMP HATS



Regs. and Long Ovals Wide Assortment Styles And Colors \$7.50 to \$10.00 MEN'S FRIENDLINE HATS 100% Fur Felt \$4.95

MEN'S BONAIRE TIES — Reg. 1.00 Value. — 87c Reg. 1.50 Value — \$1.27

MEN'S DRESS TROUSERS Rayon and Wool Flannels, Cords, Gabardines And Checks \$4.95 to \$7.95

MEN'S ALL WOOL FLANNEL TROUSERS Greys, Blues, Tans, Splash Weave and Bedford Cords \$10.95 to \$12.95

MEN'S SPORT SHIRTS In Flannels and Gabardines, Checks And Pastels Reg. \$2.49 Value. Special — \$1.98

WIDE ASSORTMENT ARCHDALE SPORT SHIRTS Special — \$2.95 and \$3.95

Belk-Settle Home of Better Value

Murray,

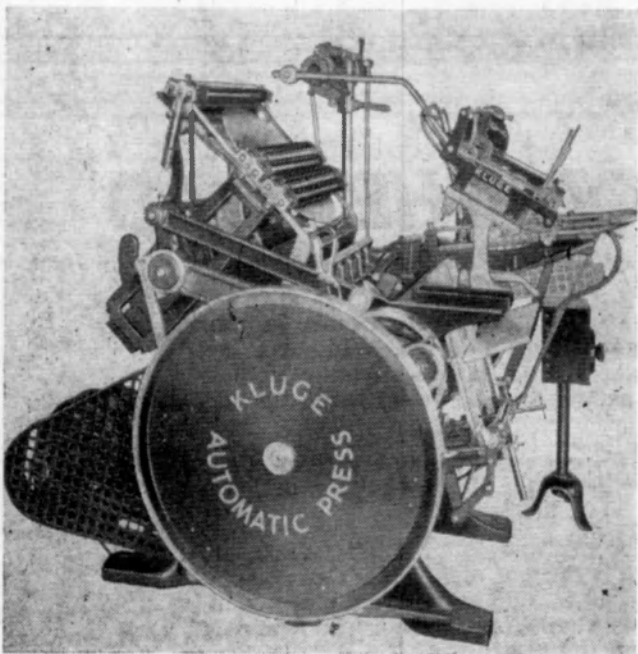
Kentucky

MR. BUSINESS MAN-ARE YOU SATISFIED

WITH THE

PRINTING YOU USE

DID YOU KNOW-



THAT THE MARSHALL COURIER

- Has the only automatic printing press in Marshall County!
- Does an excellent printing job — Satisfaction guaranteed.
- By printing automatically — you save money on every job.
- Does all kinds of printing — No job too large or too small.
- Does the largest volume of printing in Marshall County.

• YOU CAN BE PROUD OF THE PRINTING YOU USE IN YOUR BUSINESS IF THE MARSHALL COURIER PRINTS IT!

Next Time Get Our Price First and See Samples of Our Quality Work

SEE US FOR

- All Kinds Of Paper Needs
- Carbon Papers
- Stapling Machines
- Second Sheets
- Typewriter Ribbons
- Onion Skin Paper
- Office Supplies — All Kinds

The MARSHALL COURIER

Phone 3931

Benton, Ky.

Motorist Captured After Chase

World automobile chase, which sometimes reaching a top speed of 100 miles an hour, Paul Moss, 19, of Benton County, was arrested last afternoon by Benton

officers attracted the attention of police Chief Neal and Patrolman Charles Smith at the Benton Court house at 4 p.m. Saturday

when he gave chase and the driver ran all stop and go for about a mile and a half. The chase ended at the Graves County Jail where Moss turned off on a road in his attempt to escape.

After officers had a dead end and Moss was seen driving recklessly in Benton City, he was arrested.

He was issued a warning that all speeding and driving must be stopped.

General For Sullivan Conducted

Services were held yesterday afternoon at New Church for Edward

He died at his home on Route 3. He was a

Marshall County resident. Frank Chandler and

of the Gore Cemetery. His widow, he is sur-

his mother, Mrs. Mary of Benton Route 3; six

Mrs. Elsie Hutchens of Route 3; Mrs. Nellie of Paducah Route 4; Mrs. Sallie of Paducah and

sons are five sons of Lorenceville, J. R. of James E. of the U. S. R. Eburn of Paducah;

Brooks Sullivan of Benton Route 3; five sisters, Mrs. Sullivan of Benton Route 3; Mrs. Saltgiver of Hop-

Mrs. Viola Spitzgiver of Paducah; Mrs. Grace Beach of Paducah; Mrs. Annie Mills of Ben-

one brother, Carl of Benton Route 3; 15 children and two great children.

Services Held At Hardin Henry Dick, 80

Services for Henry Dick, 80, were held yesterday afternoon at the Hardin Church. The Revs. and Henry Smith of

by Linn Funeral Home. He was in Mt. Carmel Ceme-

He was survived by his wife, Mrs. Dick, six daughters, Mrs. Barton of Tennessee;

Lucie Hill of Fulton, Tenn.; of Bell City, Tenn.; of Leno, Tenn.;

and two sons, Laurence of Paducah and Leslie of Hardin.

Term Of Court Set For Dec. 14

Special session of Marshall County has been called for Dec. 14 by Judge Holland G.

regular October term on Friday, Nov. 6.

Miss Henson

For Month, F

Johnson, 77, was found

on the morning of the 1st on the bridge on the Benton-

road. He was discovered about 10 a.m. by highway workers

who were clearing the right-of-way. He was lying face down

on a badly decomposed body. A native of this county, Johnson became alarmed by his absence and started a

FACTORY PURCHASE
Pro-lite
LUGGAGE
SINGLE PIECE
OR MATCHED

BIG SMITH
WINTER
CLOTHES VALUE
WINTER LINED
JUMPERS
5 and 5.95
BIG SMITH
JANGAREES
2.98

WINTER OVERALLS
BUCKAROO WESTN
SMITH JEANS
SMITH JEANS
ER JEANS
MORGAN'S

to the
PUNCH
Lions Club
Turkey Shoot
Be Held
Lions Club
Turkey shoot will be held at
City Park on Nov. 12,
and 14. The shoot is being
sponsored by the Lions Club
and will be a day of fun and
sport. The shoot will be as fol-
lows:
Nov. 12, 4:30 p. m. to
6 p. m.
Nov. 13, 4:30 p. m. to
6 p. m.
Nov. 14, 10 a. m. to
12 p. m.
There will be plenty of tur-
keys and everyone is in-
vited to participate in
this annual Lions Club event.

There's Time Yet to
Seed Wheat and Rye
By J. HOMER MILLER
County Farm Agents
are time to seed wheat or
rye this winter. It may not
be much grazing for this
year but it may come in handy for
winter pasture before the
farms are green up.
The Farm and Home Planning
meeting will start Saturday
at the Community Building.
There are more than 20
farmers that have signed up for
this year. Meet
ing will start at 10 a. m.
Prices are high this year.
Wheat is relatively cheap. Fig-
ures are \$30 per ton costs
about 10 cents per bushel of seed, and corn
is \$2.75 per bushel costs \$2.75.
The seed cost is equal to 1

Brought
Only
Need

at reduced prices in the
emergency program will
be available only to farmers in
drought disaster coun-
ties. The feeding basic founda-
tion for flocks and will be
available to farmers "not in fi-
nancial position to buy feed at
market prices" and
less than a 30-day feed
on hand. Everett Treas,
chairman of Marshall County
Committee, said this

The drought emergency feed
program was designed for bona-
fide farmers and the feeds will
be available only for the pur-
pose of maintaining basic founda-
tion for flocks of cattle (both beef
and dairy), sheep, and goats.
Feeds that will be available
include corn at the dis-
counted rate of 50 cents per
bushel, oats at \$1.10 per
bushel, and cottonseed meal at
50 cents per bushel.
Conditions vary from county
to county. From farm to farm,
the amount of feed to be oper-
ated in the area, hence, it was
deemed that the local drought
committee can best determine
the availability of the individual.

The Marshall drought com-
mittee is composed of Ever-
ett Treas, Homer Miller, George
Hickman, and Paul Darnall.
Applications for these feeds
will be filed at Marshall County
office.

phone Co-op
Allotted
More Funds
The Rural Electric Adminis-
tration has allotted \$395,000 in
funds to improve rural
telephone service in five
Kentucky counties.
This information was received
last week in a telegram to
Marshall Courier from U. S.
Post John Sherman Cooper.
The funds will be in the form
of grants to the Rural Telephone
Company which has head-
quarters at Mayfield. The funds
will provide phone service for
additional subscribers.
Marshall is one of the five
counties which will benefit. The
other four are Graves, Hickman,
Way, Carlisle and Hickman.

Benton, The Best
• Town in Ky. •
By A Dam Site

The Marshall

There is no substitute for style and quality
Special SALE

Volume XVII Paid Circulation Sells — That Is The
Kind This Newspaper Offers Customers
Benton Ky., November 5, 1953

Benton Voters Elect Mayor and 5 N

2 City Policemen Charged After Arresting Youths

Two Benton policemen, Charles Carroll and Bobby Ray McCrady, were named defendants in a \$15,000 lawsuit filed Wednesday in Marshall County Circuit Court.

Criminal charges of maliciously shooting into an automobile also have been prepared against the two policemen.

The \$15,000 damage suit was filed by Johnny Russell Washburn, 19 years old, through his mother, Mrs. Susie Washburn.

The suit is the outgrowth of the arrest for speeding of Washburn, Orady Carmack and Buddy Stahl. The arrest took place the night of Oct. 31 on the Benton-Hardin road.

Washburn was charged in Benton Police Court with operating an automobile while under the influence of liquor. City Judge Harvey Riley reduced the charge to reckless driving and permitted Washburn to pay the minimum fine for drunken driving of \$104 and allowed Washburn to keep his drivers license.

Carmack and Stahl each paid fines of \$17 on charges of drunkenness.

In the \$15,000 civil suit, Washburn charged that the two policemen used "great, cruel and unnecessary force" while arresting him and that the officers "shot at his person and into the automobile."

The suit further charged that after the car had been stopped, the officers "maliciously, cruelly and unlawfully assaulted and beat the plaintiff."

The suit asked \$5,000 for personal damages and \$250 for damage to the automobile.

The suit further stated that Washburn was placed in jail and was not carried before a magistrate and as a result suffered mental and physical pain in the amount of \$5,000.

The suit also asked \$5,000 punitive damages, bringing the total to \$15,250.

Named in the suit besides the two policemen was the Acta Casualty and Surety Co., of Hartford, Conn., bond agent for the two officers.

Officer Carroll, in telling his side of the story, said he first sighted the Washburn car at the railroad crossing in North Benton and that the car was traveling so fast it almost turned over.

He said the Washburn car skidded several feet once and then turned around at the former Watkins service station and started south at 60 miles an hour.

Carroll said he gave chase and turned the police car blinkers on. He said the Washburn car ran stop signs through town and he turned on the Police Car siren as the cars passed Kinney Motor Co.

Carroll said the Washburn car was traveling 70 to 75 miles an hour at the city limits, and that about a mile or mile and a half outside the city he fired two warning shots to try to get the car to stop.

The cat did not stop, he said, so he then fired shots into the tires to make the car stop.

When the car stopped, he said, two of the youths ran. He said Washburn sat under the wheel and refused to get out of the car. He said he grabbed Washburn by the shoulder, pulled him out of the car and slapped him with his open hand. He said he then put the handcuffs on Washburn and took him to jail.

The other two youths were arrested later.

Basketball Game Won By Indians

The Benton High School basketball team opened its season Tuesday night with a 93 to 33 shellacking of Melber. The game was played in the gym of the Benton Indians.

Benton led 24 to 9 at the end of the first period and held a 45-16 lead at halftime.

Pete Smith led the Indians' scoring spree with 25 points. Mac Meadows scored 16 points, N. Morgan 11, Solomon 12 and Jones 13.

Benton used 12 players in the game and every man came through with a score.

Playing for Benton and their scores were:

Forwards: N. Morgan, 11. M. Meadows, 16 and Newton 3.

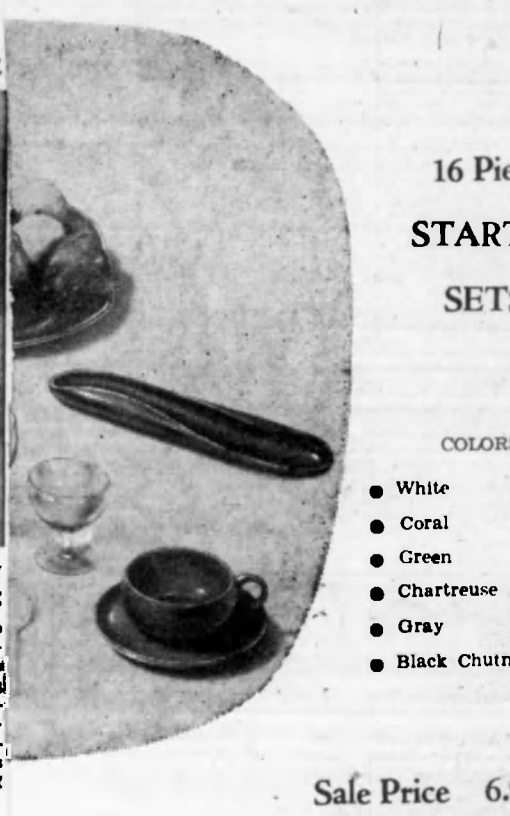
Centers: Smith 25 and Solomon 12.

Guards: T. Morgan 3, B. Morgan 2, Jones 13, Stone, 2, Jackson 4, Clark 2 and Hensley 1.

Sings for TB Fight



Rosemary Clooney sings the new Rodgers and Hammerstein song, "Happy Christmas, Little Friend," to moviegoers throughout the United States as star of the Christmas Seal Sale motion picture trailer. Christmas Seals are being sold from Nov. 16 through December to raise funds to support tuberculosis prevention and control programs of the voluntary tuberculosis associations. (Photo courtesy of Paramount Pictures)



16 Piece
STARTER
SETS
COLORS:
• White
• Coral
• Green
• Chartreuse
• Gray
• Black Chutney
Sale Price 6.95 Set
Regular Open
Stock Price, 10.95

Skeet Nelson is Benton Hi Queen

Skeet Nelson, daughter of Mr. and Mrs. Pont Nelson, was named Miss Benton High School at the school's annual Halloween party held last Friday night.

Miss Nelson is a senior student and won the title over the contestants in the higher grades.

Jo Beth Barnes, daughter of Mr. and Mrs. Joe Scott Barnes of Route 3, was named queen of the intermediate grades, the 5th and 7th grades.

Millie Rynn Lester, daughter of Mr. and Mrs. Jimmie Lester of Benton, was chosen queen of the lower grades.

The two kindergarten classes also picked queens. They are Betsy McClain, daughter of Dr. and Mrs. George McClain, and Linda Lee Hill, daughter of Mr. and Mrs. Morgan Hill.

The Halloween party was one of the largest ever held at the school. In the afternoon, preceding the party, the annual parade was held through the streets of Benton. The high school band led the parade and was followed by queens riding in automobiles and other cars filled with cheering students.

Operetta Is Scheduled At High School

The Benton High School Music Department will present the operetta "Tune In" on Saturday, Nov. 13.

Rehearsals for the musical comedy have been in progress for the last two and one half months.

There are 80 persons in this year's cast, including 14 principal characters, a 51-voice chorus and a 15-piece orchestra.

Tickets will be placed on sale Monday, Nov. 9, at Benton High School. Admission will be 60 cents for adults and 30 cents for students.

Bill Havel, school music department director, says that all indications point to this year's show being much better than last year's production and advises the public to get tickets early.

Two Benton Women Lead Secretaries Of West Kentucky

Secretaries from 12 counties of the First and Second Districts of Kentucky met Oct. 28 at a Kentucky Dam Village.

Miss Daisy Houser, secretary at Benton High School is president of the group, which is known as the Western Kentucky Secretarial Association.

Mrs. Della York, secretary in the county school superintendent's office, is secretary-treasurer of the group.

Twenty-five members attended the meeting and heard an address by Harry Sparks of Murray State College.

Mrs. Ollie Nimmo of Route 7 remains very ill at her home. Mrs. Nimmo, mother of Charles Nimmo, has been in ill health for the past two years and been bedfast for the past three weeks.

Mrs. Elizabeth Lyon of Frankfort, Ky., has been visiting at the home of her sister, Mrs. W. S. Stone, in Benton.

Mr. and Mrs. Harve Darnell of Rt. 1 were Saturday visitors in Benton.

Olive Native Dies At His Murray Home

Eulos Grant Stringer, 68, died Oct. 29 at his home in Murray.

Death came at noon as he sat at the dining table. His wife, who was taking care of other grocery, found him dead when she went home to see about him after failing to get a response from him over the telephone. He had poured coffee but had not drunk it.

He was a native of the Olive community and a son of Mr. and Mrs. John Stringer. He was a member of the Church of Christ in Murray.

Funeral services were held at the Murray Church of Christ Oct. 30 and he was buried in the Murray Cemetery.

Mrs. R. W. Wyatt of Benton is a surviving half sister and C. O. Stringer of Millford, Delaware, is a half brother.

Besides his wife, he also leaves three sisters, Mrs. L. L. Beale of Murray, Mrs. Myrtle Collier of Chattanooga, Tenn., and Mrs. Della Chambers of Beaumont, Texas.

Christmas Seal Sale To Start Nov. 16

The Christmas Seal Sale begins early this year — on Nov. 16.

This is the 47th annual sale and each year Marshall County people have opened their hearts to aid in the battle against tuberculosis.

Money from the Seal Sale goes for indigent patients to be treated for tuberculosis. Marshall County now has five patients in the sanitarium at Madisonville and there are 18 other cases of TB in the county.

The Seal Sale in Marshall County this year is being conducted under the leadership of Mrs. Luck Henson as chairman. The Benton Senior Woman's Club is sponsoring the Seal Sale.

Calvert City Elects Judge And Trustees

Calvert City elected a city judge and five trustees in Tuesday's election.

W. A. Doyle, who had no opponent, was elected city judge.

The five trustees elected are H. V. Duckett, Charles H. Hall, Hardy Cann, Thomas W. Heibel and Ray Hall.

Others in the race were L. D. Morehead, Julian McFarland, and W. B. Elam.

The individual vote totals were: Duckett 158; Charles H. Hall 141; Heibel 124; Cann 128; Ray Hall, 116; McFarland 102; Morehead 120, and Elam 67.

There was one write-in vote for Tommy Fooks.

Degree Team From Alabama Puts On Masonic Work Here

Joe Brooks Prince and James Chambers were initiated as Master Masons Saturday night at the Benton Masonic Hall.

A degree team from Red Bay, Ala., put on the initiation ceremonies. The Masons from Red Bay were fellow workers of Prince and Chambers at the TVA in Gallatin, Tenn.

The Alabama men drove all the way up here just to put on the ceremonies for Prince and Chambers.

Training School Set For Girl Scout Leaders

A three-day training course for Girl Scout leaders will be held at the American Legion Hall in Calvert City on Friday, Nov. 6, and on Monday and Tuesday, Nov. 9 and 10.

Each day's sessions will begin at 9:30 a. m. and end at 2:30 p. m.

The course will be under the leadership of Mrs. David Dodson, district director of the Bear Creek Girl Scout Council. She will be assisted by Mrs. Wilbur Adneal, volunteer trainer from Reidland.

The training course is for new leaders, assistants, troop committee members and any experienced leader who has not had the training course from Marshall and Livingston counties.

Trainees are requested to bring their lunch each day and also to bring handbooks, record books and other necessary materials.

Fire Plug To Be Put In At A And Main

The City Council, in session Monday night, voted to put a fire plug at A and Main Streets, which is below the railroad tracks.

The Council's action was prompted by a fire recently at the Lane - Ragdale Lumber Co. and no water was available to fight the flames.

Mr. and Mrs. Landen Heffington of Calvert City are the parents of a daughter born Monday at the Riverside Hospital in Paducah.

Mr. and Mrs. Douglas Wiles of Route 5 were Saturday visitors in Benton.

Mr. and Mrs. George Wood of Elva Route 1 were among the county visitor in Benton.

Big Victory Given To Amendment 1

Marshall County voters gave School Amendment No. 1 a whopping majority of 2082 to 307.

Amendment No. 1 would change Section 186 of the State Constitution so that school funds could be distributed more effectively.

The margin of victory in this county was almost 7 to 1.

Amendment No. 2, which aroused less interest, won in the county by a vote of 849 to 663.

The vote by precincts on Amendment No. 1 follows:

Precinct	Yes	No
Olive	45	31

Vote Totals are Listed In All of County Races

All of the Democratic nominees for county offices were elected in Tuesday's general election. None had an opponent.

The new officials and their vote totals are as follows:

State Representative Shelby McCallum, 2152.

Commonwealth's Attorney R. N. Vance, 2130.

County Judge Artelle Haltom, 2156.

County Attorney H. H. Lovett Jr., 2146.

County Court Clerk Todd

Funeral Services Held At Calvert For Mrs. Emmett Story

Funeral services were held Monday afternoon at the Calvert City Methodist Church for Mrs. Janet Elvora Story, 35, who died last week at her home in Jacksonville, Fla.

Burial was in Calvert Cemetery.

Besides the husband, Emmett Story, she is survived by two daughters, Paulette and Janet Marion Story; one son, David Kent Story; the parents, Mr. and Mrs. Charles Glass of Pittsburgh, Pa., and two brothers.

Mr. Story is a native of Calvert City.

Mr. and Mrs. Jack Thompson are the proud parents of an 8 pound daughter, Jackie Faye, born Tuesday, Oct. 27, at Murray Hospital.

Ross	72	2
Heights	39	7
Birmingham	25	1
Briensburg	151	13
Scale	60	11
Gilbertsville	90	9
Calvert City	200	41
Little Cypress	119	7
Sharpe	160	6
Palma	98	5
Oak Level	36	4
West Benton	214	26
North Benton	209	27
South Benton	246	2
Harvey	35	3
Brewers	85	3
Hardin	118	10
Price	11	4
Elva	19	20

13 Are Fined In City Police Court

Thirteen persons were fined in City Police Court last week by Harvey Riley, city judge.

Four persons were fined for reckless driving, four for drunkenness, two for speeding and three for running stop sign.

REAP A HARVEST OF REAL \$... DURING OUR **Harvest** NOW GO



See Us Also For All Types
Guns And Ammunition, Fishing
Equipment And Sporting Goods
COMPLETE BATHROOM



Equipment, White and Colored

... of Route 5
... in town Thursday
... were stopped by the
... office to renew the sub-
... of Everett Hill and wife
... Dearborn, Mich.
... Vernon Walker of Route 4 was
... a visitor here Friday.
... Clayton Lyles of Route 1 was
... a business visitor in Benton Fri-
... day.
... Mrs. Moscoe Franklin of Route
... 7 was a shopper in Benton Fri-
... day.
... Finis Lofton of Calvert City
... was admitted to the I. C. Hospital
... last week for treatment.
... Mr. and Mrs. Percy B. Cloud
... of Calvert City are the parents
... of a son born at the Baptist
... Hospital in Paducah Wednesday
... of the past week.
... Claud Byers of the county was
... a business visitor in Benton Fri-
... day.
... Mrs. Carl Greenfield of Route
... 1 was a shopping visitor in Ben-
... ton Friday.
... Mr. and Mrs. Walter English
... and son of Route 7 were Wed-
... nesday visitors in Benton.
... W. J. West of Route 1 was a
... business visitor in Benton Sat-
... urday.
... R. A. Hutchens of Route 5 was
... in town on business Saturday.
... S. P. Hutchens of Rt. 1 was a
... business visitor in Benton Sat-
... urday.
... Bee and Jack Shemwell of Oak
... Level were business visitors in
... town Saturday.

A Star is Born!



BULOVA
Goddess of Time

SET WITH 2 DIAMONDS
17 JEWELS
ONLY \$49.50

Heavenly Beauty Unmatched
in the World of Watches



HAWKINS JEWELRY
BENTON
KY.

THE RAGTIME-TO-RICHES STORY!
"SO THIS IS LOVE"
The story of GRACE MOORE
KATHRYN GRAYSON - Merv Griffin - Douglas Dick
Also Selected Short Subjects

PENNEY'S
ALWAYS FIRST QUALITY!

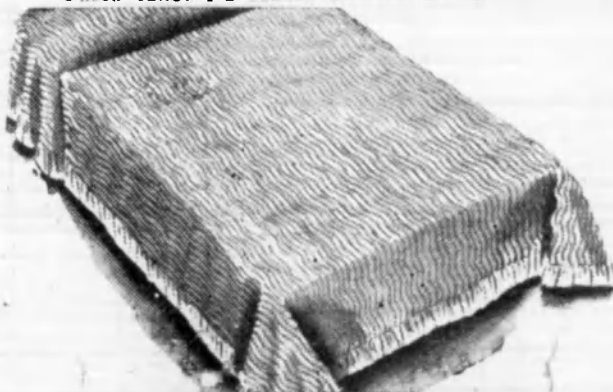
The smart way to gift shop this Christmas...
Paducah, Ky.

Join Penney's Christmas Club

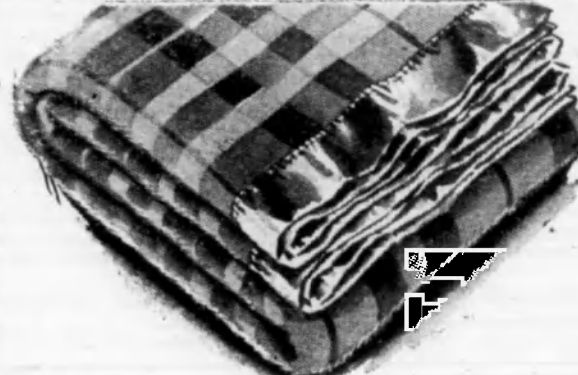
Pick at leisure from peak stocks now... one deposit holds all your gift
selections! Pay a little each week and everything is paid for by Christmas!



**NATION WIDE
MUSLIN SHEETS** 81 x 99 \$1.88
BLEACHED WHITE
63x99 ... 1.73 81x108 ... 2.15
Twin Size ... 1.88 Full ... 2.15
CASES
36x36 ... 42c 42x36 ... 45c
COLORED SHEETS
Twin ... 2.49 Full ... 2.69
Cases 42x36 1-2 37c



11 DECORATOR COLORS!
VERTICAL WAVY LINE
CHENILLE BEDSPREADS 4.98
Colors, Colors, Colors... to please every taste and to beau-
tify every bedroom! Choose from a wide assortment of white,
pastel and deep tone colors in this fine Penney bedspread
value! Made of pin-point chenille, with 4" bullion fringe.



Twin - Full
Size
**Pastel Plaid
BLANKETS**
3 1/2 LB.
72 x 90 \$8.90

Decorator styled with modern-day smart
ness... woven in a new scientific blend.
This Penney blanket (75% crimped staple
rayon, 15% Cotton, 10% wool) offers
greater-than-ever warmth, longer than
ever beauty. Rayon acetate bound. 7 cols.

GIFT BOXED, PILLOW CASES



Each beautiful pair comes
boxed, making it suitable
for gifts, too. Borders are
colored or white! Come
early while assortment is
wide and varied. **1.98**



Solid Color
Bark Cloth
DRAW DRAPES

3.98

Save time with these ready to
hang drapes. It's acetate and rayon
with 3" pinch pleats. It's 50" x
2 1/2 yds. to the pair. Colors are sun
resistant and priced to fit the most
budget minded. Colors - wine,
green, red, grey, rose, oyster.



DELUXE CORDUROY SHIRTS

4.98

Just toss these fine corduroy shirts in
with the rest of the family wash! They
need no special handling! They come up
looking color-bright time after time!
They're expensively styled with flap pock-
ets, rayon yoke linings, genuine ocean
pearl buttons, adjustable cuffs... just
about every luxury-touch you could want.
Penney's has them in plenty of new-for-
Fall colors, S-M-L-XL.

Special Purchase
Cotton Flannel
GOWNS
Straight Cut Styles
Solid Patterns
Full Length
Sizes 16-20

\$1.98

**COLOR
FROSTED
WITH WHITE**

White with
lightning pink
forest-green
sun gold
limelight
rocket blue
59c
20" x 40"

PICKET STRIPE TOWELS

It takes sparkling white to highlight color! It takes
Penney's to bring you the perky new picket stripe
towel at this tiny price. Now you can mix these
deep-terried Cannons with your solid towels for
striking new effect. See them, buy them, match them.
15x25" face towels .39 12-12" wash cloths .29

TURKEY SHOOT

**BENTON
CITY
PARK**



NOV. 12 - 13 - 14th

SHOOTING HOURS WILL BE:

THURSDAY, NOV. 12, 4:30 p. m. to 11 p. m.
FRIDAY, NOV. 13, 4:30 p. m. to 11 p. m.
SATURDAY, NOV. 14, 10 a. m. to 11 p. m.

CLAY PIGEONS & STILL SHOTS

SPONSORED BY THE

Benton Lions Club

COME IN! ASK ABOUT THIS EASY-PAY WAY TO A BILL-FREE CHRISTMAS, 1953

Up this Christmas...
Y-AWAY
nas Club
it holds all your gift
paid for by Christmas!
EAR
PS
4c
Y
98
roy shirts in
wash! They
they come up
after time!
with flap pocket
genuine ocean
cuffs... just
in could want
y of new-for-

Special Purchase
Cotton Flannel
GOWNS
Straight Cut Styles
Solid Patterns
Full Length
Res. 16-20
\$1.98
COLOR
FROSTED
WITH WHITE
59c
20"x40"
White with
lightning pink
forest green
sun gold
limelight
rocket blue
PICKET STRIPE TOWELS
It takes sparkling white to highlight color! It's
Penney's to bring you the perky new picket
owel at this tiny price. Now you can mix these
heep-terried Cannons with your solid towels for
triking new effect. See them, buy them; make
5-25" face towels .39 12-15" wash cloths
L-FREE CHRISTMAS, 1953

Open Friday Till 8:30 P. M.

WE HAVE SMART NEW

Warm Togs

For The Big and Little Girls

Girls of all ages visit our Children's coat department for the newest smartest outfits.

GIRLS'
All Wool Coats
Dress up that charming 7 to 14 young lady in a smart coat of tweed or fleece in checks or solid colors. They'll love the swing styles and the contrast velvet trims!
17.98 to 22.98

GIRLS'
Slack And Coat Sets
Slack and coat sets for the smaller warm and cozy in all wool or fleece in wine, brown or blue. These sets have matching hats.
17.98 to 22.98

Infants' and Toddlers'
SNOW SUITS
Unbeatable nylon and acetate rayon that are pretty and practical... and to the tub! Pretty assorted pastels, in girls... and boys too!
12.98 to 17.98

Children's Shop, Third Floor

THE LABEL... **WATKINS** ...the quality store of your future

TO LOOK FOR

Limited Time Only
Nov. 1 - Nov. 14

There is no substitute for style and quality

Special SALE

Russel Wright
american modern dinnerware
Hand-Made by Staubenville Pottery Company



16 Piece
STARTER
SETS

COLORS:
• White
• Coral
• Green
• Chartreuse
• Gray
• Black Chutney

Starter Sets Consist Of
4 Dinner Plates 4 Saucers
4 Bread and Butters 4 Cups

Sale Price 6.95 Set
Regular Open Stock Price, 10.95

Here is an opportunity to buy your American Modern dinner service at a substantial saving. Basic pieces heretofore available only in complete sets or open stock are now economically combined in a service for four place settings. Buy one, two or as many as you need... add to it later. The enduring beauty of this famous dinnerware is completely at home with modern or traditional decor.

Gift Shop, 4th Floor

Having Your Snowflake



For Pure Glamour
Drape a Colorful Stole around your shoulder anytime... Day or Night!
You may choose a loosely knit wool confection in candy colors... like the one at the left, above, or a soft pastel plaid like the one in the middle, or an elegant, tissue type, with gold interwoven like the one at the right, by Eisenberg. Priced to fit your budget.
2.00 to 13.50

Accessories, Main Floor

FALL ACCESSORIES

speak with a French accent

Just that certain "something" ... an air of smartness and chic ... that is style!



GLOVES
Dawnette offers you simple tailored styles, or fancy ones, white, black or colors.
2.00 to 7.50 pr.

HANDBAGS
Satin smooth calfskin, soft luxurious suede or antelope, corde or velvet, in black or colors, shoulder, handle styles.
3.00 to 42.00
Plus Tax

Gloves, main floor



more
flounce
to the ounce
in our

CAN-CAN PETTICOATS

The more the merrier... that's how you'll feel about ruffles when you see them edging these pert petticoats! Try one in crisp crinoline and taffeta in white, black, or with gaily colored ruffles. Enjoy the DASH it will give you.
5.98 and 8.98

REMEMBER TOO... IT COSTS NO MORE TO SHOP AT WATKINS PADUCAH'S QUALITY STORE OF FINE FASHIONS, AT POPULAR PRICES

WORK CLOTHES

For Rugged Wear!

Heavy Sanforized Suede WORK SHIRTS

\$1.98

- Houndstooth Checks
- Bold Plaids
- Fancy Patterns
- Your Choice



These heavy Sanforized suede work shirts are cut extra full for that extra comfort. Double stitched for longer wear. Colorful patterns in sizes 14 to 20.



Men's Heavy Moleskin WORK PANTS

\$3.69

Heavy weight moleskin work pants with fleeced back for extra warmth. Smooth, hard finish assures longer wear. Heavy duck pockets. Guaranteed by Good Housekeeping. Black and gray stripe pattern. Sizes 29 to 50.

National Stores CORPORATION

First Baptist WMS Meets At Home Of Mrs. Rudy Cox

The WMS of the First Baptist Church held its regular monthly meeting in the home of Mr. and Mrs. Rudy Cox, Tuesday evening, with the President Mrs. Luther Thompson, presiding over the business session and also leading the Royal Service Program, "A Sinful Word - a Sufficient Savior". Under different topics the subject was discussed by the leader and other members, and was interspersed with prayers. At the close of this program, the hostess served refreshments and a social hour of fellowship was engaged in by all. Those present were Mesdames J. R. Brandon, Joe Brandon, L. H. Draffen, Della Ely, Annie Nelson, Claud Park, Chester Powell, Luther Thompson, Nola Thompson, L. A. Tucker, Miss Lizzie Hall and the hostess, Mrs. Cox.

Carol Turner And J. W. Garrin Are Wed In Mississippi

The wedding of Miss Carol Turner, daughter of Mrs. H. F. Jewett of Route 2, Benton, and Mr. J. W. Garrin, son of Mr. and Mrs. George Garrin of Wyandotte, Mich., took place Saturday, Oct. 31 in Corinth, Miss. The Rev. Rubel L. Phillips performed the ceremony. The attendants were Mr. and Mrs. Noel Cordes, Mrs. H. F. Jewett and Roy L. Turner. The newlyweds left Sunday, Nov. 1, for Wyandotte, where they will make their home. Herbert Noles of Route 7 was a business visitor in Benton Saturday.

Want Ads

WANTED - Cream, poultry and eggs. Will pay highest market prices. Your patronage will be appreciated. Benton Produce, 904 Main Street, Mrs. William Cobb proprietor. 26p

FOR SALE - Used Westinghouse electric stove Reasonable. Mrs. Lalah Shemwell, Phone Benton 4662. 25p

FOR SALE - Clean No. 9 egg coal. Delivered for only \$9 per ton. Telephone Benton 3411 after 5 p. m. 25p

FOR RENT OR LEASE - Large 2 bedroom house on Highway 963, 7 miles from Calvert City. Write Lillie Henderson, 311 Ashbrook, Paducah, Ky. or phone 3-1673. 25p

MISSING - Elvis Henson, 77, has been missing since Oct. 1. Anyone knowing of his whereabouts please notify Claude Henson, 402 West 8th St., Benton, or phone 6881. 25p

ARE YOU HAPPY in your present Trailer Park? If not we would like to have you in ours. Washing facilities, city sewerage, 1 block from city school. Children welcome. JUDESS TRAILER COURT 219 W. 9th, Benton, Ky. 25p

FOR RENT - 2 Convenient modern furnished rooms at 303 W. 10th St. Benton. Mrs. John D. Hall. 25p

FOR SALE - Warm morning stove - See W. H. Hatfield, 2 miles East of Brinsburg on Highway 68. 26p

LOST - Brown leather billfold, no money in it but do need drivers license and papers. Will give nice reward if returned to Marshall Wyatt at the Courier office. 25p

FOR SALE - 1950 Willys Station Wagon - Good condition. Only \$525. Phone 2431. Benton, Ky. 25p

WEEK'S RECIPE

Frequent use of fish in the menu is one way to hold costs down, says Mrs. Pearl Hawk at the UK College of Agriculture and Home Economics. Here is a tasty way to prepare it.

Baked Fish Fillets
3 medium size onions
1 tablespoon butter
1 pound fish fillets
3 tablespoons flour
1 cup light cream
1/4 teaspoon salt
1 tablespoon minced parsley
Paprika
Slice the onions thin and brown lightly in butter. Place in baking dish. Roll fish fillets in flour and place on the onions. Pour cream over the fish. Sprinkle with paprika. Bake 30 minutes in a moderate oven, 350 degrees. When done, sprinkle with salt and minced parsley before serving.
Menu: Baked fish fillets, baked squash, buttered carrots and celery, cabbage-pineapple salad, corn sticks, butter and fresh grapes.

Elbert Inman of Route 4 was a business visitor in Benton Saturday.

THE MARSHALL COURIER
Published Thurs. Of Each Week at 1103 Poplar St. Benton, Ky. Entered as 2nd Class Matter May 30, 1937, at the Post Office at Benton, Ky. Under The Act of March 3, 1879.
Urey Woodson, Cross and Marshall Wyatt - Publishers

HOTTEST Oil Heater Buy in Town!



ONLY \$89.95

FULL SIZE, BIG CAPACITY GENUINE

DUO-THERM CIRCULATING OIL HEATER

Heats plenty! Big capacity oil heater with genuine Duo-Therm heating efficiency!
Heats beautifully! Superb new styling, rich brown finish, brass door pull!
Heats clean! Exclusive Dual Chamber Burner is clean burning on high or low fire setting and gives more heat from every drop of oil.
Extra value features Automatic Draft Minder... Waste Stopper... Coordinated Controls.

FLEMING Furniture Company

Weekly Newspaper In Illinois Sells For 15 Cents Per Copy

A single copy price of 15c has recently been established by the Mount Morris (Ill.) Index in order to help meet rising costs. So far as we know this is the first weekly to establish a 15c price in spite of the fact that many weekly papers formerly sold for 10c and 12c. The Mt. Morris Index has a circulation of 2,700.

Some people care about the difference between 10c and 15c. Subscribe to the Index.

GET YOUR FIRE INSURANCE

FOR 20% LESS

Check and see! State Farm Fire Insurance rates are 20 percent less than ordinary insurance rates in this area. Couldn't you use the difference? Easy payment plan. Let me tell you all about it. You and I will both be much better off.

Solomon & McCall

STATE FARM INSURANCE COMPANY
J. Homer Solomon, Local Agent
1108 1/2 Main Phone 2492

NELSON Rexall DRUGS

YOU CAN DEPEND ON ANY DRUG PRODUCT THAT BEARS THE NAME-REXALL

NOVEMBER SPECIALS

AT YOUR Rexall DRUG STORE

As Advertised in LIFE • LOOK • COLLIER'S • COUNTRY GENTLEMAN
The Bargain of the Year!
Luxury-ELECTRIC BLANKET
It's Washable!... It's Guaranteed!
Lightweight, double bed size. Choice of blue or rose. Fully automatic control.
Buy now... Save on
CHRISTMAS CARDS
VALUE BOX 50 Assorted Christmas Cards, some with silver, glittery snow and red velvet trims.
\$34.95 Value ONLY 19.95

Buy now... Save on
CHRISTMAS CARDS
VALUE BOX 50 Assorted Christmas Cards, some with silver, glittery snow and red velvet trims.
\$2.50 Value SPECIAL 98c

Homemade Chocolate PEPPERMINT PATTIES
Extra-large patties made with real peppermint, creamy centers.
TUNE IN AMOS 'n' ANDY REXALL RADIO SHOW - SUNDAYS
Lose Weight Where It Shows!
Ann Delagfield REDUCING PLAN
• You Don't Starve • You Don't Count Calories • It's A Food... Not A Drug
COMPLETE 1 Lb. 6.95

BRING YOUR PRESCRIPTIONS TO OUR REXALL DRUG STORES
REX-RAY INFRARED LAMP for penetrating, soothing heat. Now \$1.79 1.19
LOZOTHICIN THROAT LOZENGES 12's 69c
BISMA-REX GEL Liquid antacid. 8 ounces 1.19
DELUXE TOOTH BRUSHES 5 medically approved styles each 59c
CHERRY BARK COUGH SYRUP 3 ounces 45c
AEROSOL REX-SALVINE, spray-on relief for burns, 5 oz. 1.39
CARA NOME HAND CREAM smooths, softens. 4 ounces 1.10
CHLOROPHYLL MOUTH WASH breath deodorant and tartar 1 pint 79c
BISMA-REX COMB. PKG. powder and tablets, \$1.04 value 79c
HOSTESS SET paper towels and soap \$1.50 value 79c
STAG SHAVING CREAM Bay Rum or Colgate. 3 1/2 oz. 40c
REXALL ANALGESIC BALM 1 ounce 65c
CARA NOME NATURAL PERMANENT 1.50
CONTI CASTILE SHAMPOO 5 ounces 49c
RISE BRUSHLESS SHAVE foam 59c
ANALIST COLD TABLETS 1.15 55c
Plus Federal Tax on some.

YOU CAN DEPEND ON ANY DRUG PRODUCT THAT BEARS THE NAME-REXALL

Neighbors



Just suppose with a 20-year men

Homemakers met Oct. 21, at the Masonic Hall, with Miss as hostess. Two visitors and a collection were presented. Much was served at the meeting.

the lesson, "Basic Wardrobe," by Mrs. Edward. A meeting will be held on Gold of Route 4 was in Benton Friday.

GOVERNMENT SURPLUS

FARM MORNING HEATERS

Good Condition New, Cost Twice The \$29.95

COUNTRY STORES

Paducah • • •



Very chic... very fashionable 3 piece suit adapted for evening, ensembled in Miladina - Gema Zibeline fashion jacket with its be buttoned way collar... pure worsted skirt, and soft wool jersey and Mauve Pink in size

Vanity Shop

MAYFIELD, KY

Newspaper Sells For Per Copy

price of 15c has been established by the (11) Index in order to meet rising costs. You know this is the only way to establish a price of the fact that:

Neighbors

many weekly newspapers formerly sold for 10c. The Mt. Vernon, ABC circulation of 2,700 population. Some people use the difference between of mind and paper of the fact that:

YOUR FIRE INSURANCE FOR 20% LESS

State Farm Fire Insurance Co. of America. Let me tell you all about it. You'll save!

Mon & McCall

STATE FARM INSURANCE COMPANY

Homer Solomon, Local Agent

Phone 2492

exall DRUG

SPECIALS

COLLIER'S COUNTRY GIBBER

\$34.95 Value ONLY 19.95

\$2.50 Value SPECIAL 98c

100% CHOCOLATE PEPPERMINTS 59c

REXALL RADIO SHOW - SUNDAY

COMPLETE PLAN 6.95

SCRIPTIONS TO OUR REXALL DRUG STORE

COLLIER'S COUNTRY GIBBER

\$34.95 Value ONLY 19.95

\$2.50 Value SPECIAL 98c

100% CHOCOLATE PEPPERMINTS 59c

REXALL DRUG STORE

COLLIER'S COUNTRY GIBBER

\$34.95 Value ONLY 19.95

\$2.50 Value SPECIAL 98c

100% CHOCOLATE PEPPERMINTS 59c

REXALL DRUG STORE

COLLIER'S COUNTRY GIBBER

\$34.95 Value ONLY 19.95

\$2.50 Value SPECIAL 98c

100% CHOCOLATE PEPPERMINTS 59c

Benton, The Best

- Town in Ky. •
- By A Dam Site

Volume XVII Paid Circulation Sells — That Is The Kind This Newspaper Offers Customers

Funeral Services Held At Hardin For Mrs. Zela Mofield

Funeral services were held last Saturday afternoon at the Hardin Church of Christ for Mrs. Zela Mofield, 50. The services were conducted by John Brinn, pastor. Burial, by Filbeck-Cann, was in Barnett Cemetery.

Besides the husband, Kelzie Mofield, the survivors are one son, Ray Mofield of Hardin; her father, Solon Irvan of Paducah. Also two brothers, Robert Irvan of Elyria, Ohio, and Edward Irvan of Ellettsville, Mich.; and five sisters, Mrs. Kelzie Warren of Hardin Route 1, Mrs. Ruby Langston of Paducah, Mrs. Jim Walker of Paducah, Mrs. Howard Wright of Elyria, Ohio, and Mrs. Harry Walczak of Elyria.

Paul Cross of Paducah was a business visitor in Benton Friday.

GOVERNMENT SURPLUS

WARM MORNING HEATERS

Good Condition When New, Cost Twice This Price

\$29.95

COUNTRY BOY STORES

Third & Kentucky Paducah • • •

CRAWFORD FERGUSON COMPANY

• • • Benton



Direct to you!

exclusive **PARIS IMPORTS**

adapted by *dan millstein*

Very chic...very French is this three-piece suit adopted from Chicago, ensembled in Miron's marvelous Gema Zibeline fashions. Jacket with its be-buttoned sleeves and way collar...pure worsted flannel. Skirt, and soft wool jersey blouse. Way and Mauve Pink in sizes 8 to 16. **\$89.95**

The Vanity Shoppe

MAYFIELD, KENTUCKY

The Marshall Courier

Western Kentucky's Largest Weekly Newspaper — Benton and Marshall County's Home Newspaper

Benton Ky., November 5, 1953

farm facts

FOR KENTUCKY FOLKS

by Wm. C. Johnstone

AGRICULTURAL REPRESENTATIVE

KENTUCKY BANKERS ASSOCIATION

It does little good to recount our adversities and I am sure that we have already heard too much about the dry weather. But the effects of the drought is the most important problem facing Kentucky farmers today and I fear we will hear much of it for a long time in the future.

Pastures are non-existent—the poorest I remember in the past 50 years and, worst of all, much of the perennial grasses and legumes are apparently dead. Most small grains are not up yet and it will require an unusually favorable winter to save many acres of oats and barley which were seeded at great expense and which should normally be covering the ground by November.

Winter feedings started two months earlier than usual and will continue through the spring. And so the story goes. The question now is "What can we do to lessen the effects on next year's income?"

The most immediate problem for 1954 as I see it are: maintaining breeding herds, re-establishing perennial forage, and reducing production costs. I will try to discuss these during the coming months.

Right now there are two immediate steps to take: first, cull the poor producers from the herd; second, continue to sow wheat and rye even until early December. One can not expect to carry poor producers over a long winter on high priced feed and wheat and rye are good "bait" when seeded rather late.

I predict that pastures will come out next spring better than

most of us expect. Nitrogen supplies in the soil build up fast during dry seasons and drought years are usually followed by good crop years. Much grass thought to be dead will recover, and nature has a lot of grass and clover seed stored in the soil ready to come back next spring.

Fortunately too, there is a good supply of many pasture seeds. The government has over 12 million pounds of 1952 rescue seed crop in storage and little of the 29 million pounds harvested in 1953 has been used.

Although the seed is abundant the demand will be great because rescue has proven the most drought resistant of all Kentucky grasses. Red and alsike clover and alfalfa are also abundant and will be relatively cheap. Lespedeza will be very short.

Fertilizers, too, will be abundant and priced, in comparison with other things, relatively cheap. In 1954 farmers who wish to save money and produce cheaply will continue to use fertilizer liberally but only in accordance with the results of soil tests, made on every cultivated acre.

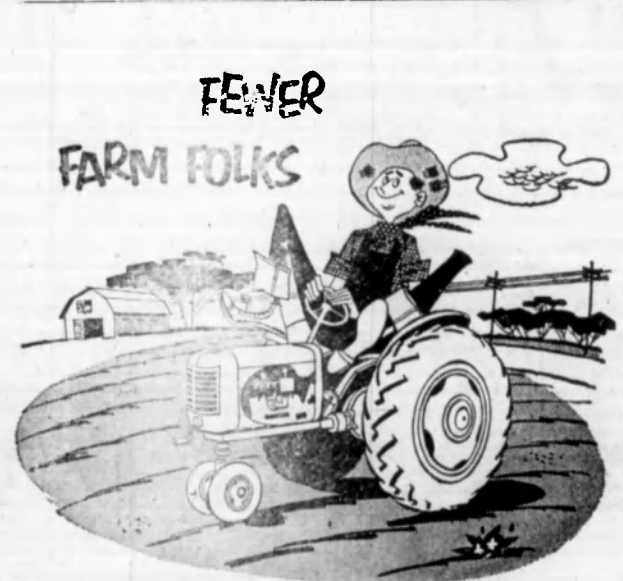
In spite of the drought there is much good corn in the state this year. It is remarkable how little water a crop can use if it comes at the right time and if there is plenty of fertility in the soil. In the 1930 drought Kentucky's average corn yield was 10 bushels per acre. This year the latest estimate indicates near 35 bushels.

PEEL & HOLLAND

All Kinds

INSURANCE

1120 Main Benton, Ky.



...but more farm telephones

Since the end of World War II, rural telephone construction has surged ahead at a record-breaking pace. Today over half a million rural phones are served by Southern Bell, and new ones are going in at the rate of 6,500 a month.

This record of rural progress is even more amazing when you consider that the South's farm population has actually decreased, largely due to mechanized and more efficient farming methods.

But farmers need and use the telephone more than ever before. That's why providing them more and better service is one of our most important jobs.

SOUTHERN BELL

TELEPHONE AND TELEGRAPH COMPANY

Farm Bureau Meeting Set For Nov. 15-18

Kentucky farmers will decide Farm Bureau policy for 1954 at the 34th annual Kentucky Farm Bureau Federation convention to be held in Louisville 15-18. At that time more than 600 voting delegates representing 112 county Farm Bureaus will vote on all important agricultural issues of the day.

The Farm Bureau's executive secretary, J. E. Stanford, St. Matthews, said that more farmers have shown interest in developing Farm Bureau policy this year than ever before. "The year 1953 has been a critical one for farmers," he said, "and our members are anxious to chart a course for Farm Bureau in 1954 that will improve the agricultural economy on Kentucky farms."

Kentucky Governor Lawrence Wetherby, American Farm Bureau President Allan B. Kline, and Kentucky Senator John Sherman Cooper are scheduled to speak at the annual event. In addition, the state finals of the Farm Bureau chorus contest, king and queen contest, rural youth talk meet and talent hunt are to be held.

The tobacco, poultry, dairy, livestock, and commercial crops conferences are slated for Monday, Nov. 16, at 1:30 p.m.

The so-called "right-to-work" legislation will be debated at 10:15 Tuesday morning, Nov. 17.

THINGS TO TALK ABOUT

BY FRANKLIN J. MEINE

Editor, American Peoples Encyclopedia

BECAUSE MANY VISITORS TO NATIONAL PARKS HAVE BEEN INJURED BY APPROACHING WHAT THEY BELIEVE TO BE TAME ANIMALS, THE NATIONAL PARK SERVICE HAS EXTENDED REGULATIONS AGAINST THE MISTAKING OF BEARS TO COVER OTHER LARGE ANIMALS.

HOW ABOUT THIS, MAINE?

NEW MEXICO VOTERS HAVE PICKED THE WINNER IN EVERY PRESIDENTIAL ELECTION SINCE ACHIEVING STATEHOOD. IN 1912 AND 1924 IT WAS BY A PLURALITY — IN ALL OTHER ELECTIONS BY A CLEAR MAJORITY.

BIRTHS

McCLAIN CLINIC

Mr. and Mrs. Donald Faith of Calvert City Route 2 are the parents of a son born Oct. 25.

Mr. and Mrs. U. L. Strawbridge of Benton Route 7 are the parents of a daughter born Oct. 27.

Mr. and Mrs. Joe Ferris of Calvert City Route 2 are the parents of a daughter born Oct. 28.

Woodrow Faith of Elva was admitted to the I. C. Hospital last week for treatment.

Governor Wetherby Proclaims Diabetes Detection Week

Governor Wetherby has proclaimed Nov. 15 to 21, inclusive, as "Diabetes Detection Week" in Kentucky as part of the nationwide drive to detect as many possible of the million unknown diabetics in the land.

Wetherby urged all citizens learn about the disease and take advantage of the free tests of diabetes available to all from members of the Kentucky State Medical Association which annually sponsors the non-fun raising drive in cooperation with the American Diabetes Association.

Many state-wide organizations have endorsed the detection campaign which is designed to save lives by letting the undiscovered diabetics know that they have this controllable disease.

Mr. and Mrs. E. B. Whitehead of Eddyville Route 1 and 1/2, Louisville, and their little son, Ernest, were guests during the past week of his aunt, Mrs. Mae Walker in Benton. Mr. Whitehead is employed in St. Louis.

Wilson's Book Store

Office Furniture Books - Music

Office Supplies Fountain Pens

Duplicators Greeting Cards

• 306 Broadway Paducah, Ky.

Announcing today! New 1954 DE SOTO AUTOMATIC with PowerFlite... See it NOW!

TRANSMISSION



Here's how the New 1954 DESOTO AUTOMATIC puts you ahead Automatically!

On The Highway! The new 1954 DeSoto Automatic carries out sudden orders swiftly and safely at all speeds. Gives you Full-Time Power Steering. Power Brakes, No-Sway Ride Control! Plus a new type of fully-automatic transmission... PowerFlite... smoothest and quietest in the industry!

In Traffic! The DeSoto Automatic responds instantly to your commands. Gone are clutch-pushing and gear-shifting. You steer and park without effort. You accelerate like a flash from any speed. You swing around turns with far less body sway. You stop safely with half the usual pedal pressure!

In Styling! The DeSoto Automatic introduces new ensemble styling! New beauty outside with long low body, massive new bumpers and grille! And completely new inside with solid-color moldings, decorator-matched fabrics, elegant hardware, and new contrasting-color instrument panel!

In Value! The DeSoto Automatic pays exceptional dividends. Whether you choose a FireDome V-8 (now upped to 170 hp!) or a Powermaster Six, you are automatically providing for safety, long-range economy, and years of pleasure. There are many more exciting details... call us or come in!

Boyd Motor Co.

6th and Main Street, Benton, Ky.

Tune In BROUCHO MARX weekly on RADIO and TELEVISION (NBC) and "Medallion Theatre" on TELEVISION (CBS)

Read The

DO YOU
A N



Then
STYLE

Many plans from
Ranch Type • 1 1/2
Bungalows—with
attached
• ELIMINATE W
sary to comple
We will erect your
erection by furnis
Finest quality mat
in the construction
ed by one of the
homes.
Standard method
Building requirem
For complete info
ST

PAT

Route No. 1

Church Programs

BREWERS CIRCUIT

B. J. Barron, pastor
Brewers M. E. Church
Fourth Sunday morning at 10
o'clock.
First Sunday evening at 7
o'clock.
Sunday School each Sunday
morning at 10 o'clock.
Oak Level M. E. Church
Second Sunday morning at 11
o'clock.
Third Sunday evening at 7
o'clock.
Sunday School each Sunday
morning at 10 o'clock.
Pleasant Grove M. E. Church
First and third Sunday morn-
ing at 11 o'clock.
Second and fourth Sunday ev-
enings at 7 o'clock.
Sunday School each Sunday
morning at 11 o'clock.

BENTON CIRCUIT

F. B. Alexander, pastor
Mt. Carmel
Sunday School each Sunday
morning 11 a.m. Preaching first Sun-
day 11 a.m.
Church Grove
Sunday School every Sunday
at 10 a.m. Preaching 2nd Sunday
at 11 a.m., and 3rd and 4th Sun-
days at 7 p.m.
Maple Springs
Sunday School every Sunday
at 10 a.m. Preaching 3rd Sun-
day at 11 a.m. and 1st Sunday
at 7 p.m.
Briensburg
Sunday school each Sunday
morning 10 a.m. Preaching 4th
Sunday at 11 a.m., and 2nd Sun-
day at 7 p.m.

RIARPE CHURCH OF CHRIST

Lavern Stewart, Minister
Bible study at 10 a.m.
Worship services at 11 a.m. and
6:30 p.m.
Wednesday evening service at
7:30 p.m.

OLIVE BAPTIST CHURCH

William L. Hodge, Pastor
Worship services each Sunday
11 a.m. and 7 p.m.
Sunday School at 10 a.m.
Prayer Meetings Wednesdays
7 p.m.

BENTON CHURCH OF CHRIST

L. E. Garner, Minister
Sunday Morning Bible school
10:00 A.M.
Preaching and Communion
11:00 A.M.
Preaching ————— 7:30 P.M.
Wednesday Services 7:30 P.M.
Young people's class at 6:30
p.m. Sunday.
Ladies Bible Class at 2:15 p.m.
Wednesday.
You are invited to attend every
service at the Church of Christ.
We have no creed but the Bible.
We wear no name but that of Christ

UNION HILL CHURCH OF CHRIST

Harold Sain, Minister
Bible Study ————— 10 a.m.
Worship & Preaching 10:45 a.m.
Young Men's Tr. Class 3 p.m.
Worship and Preaching 8 p.m.
Young Peoples' Class Wednesday
8 p.m.
Mid-Week Bible Study Wednes-
day 8:15 p.m.

BARDIN BAPTIST

(George E. Clark, Pastor)
Sunday services: 10:00 A. M.
Preaching Service — 11:00 A. M.
2nd - 4th Sundays — 7:00 P. M.
Prayer meeting Wednesday night
at 7:30 P. M.

BENTON FIRST CHRISTIAN

Rev. Bill Williams, Pastor
Bill Morgan, Supt.
Sunday school — 10:00 a.m.
Worship Service — 11:00 a.m.

BETHLEHEM BAPTIST

Rev. Clayton Wyatt, pastor
W. O. Powell, supt.
Sunday school 10 a. m. Wor-
ship service 10 a. m. and 8 p. m.
Training Union 7 p. m.

W. GILBERTSVILLE BAPTIST

(The Rev. Curtis Haynes, Pastor)
Sunday school — 9:45 A. M.
Preaching — 11:00 A. M.
Bible Study Wednesday nights
Training Union 6:00 P. M.
3YPU 6:00 P. M.
Preaching ————— 7:00 P. M.



from
The Bible
...except the Lord keep the city,
the watchman waketh but in vain.
—(Psalm 127, 1.)
We build our defenses strong—
our armies, our fleets, the war-
planes above, the radar nets that
sweep the skies. But if we as a
people, as a nation, base our hopes
for survival on material might
alone and forswear Almighty God,
we will be defenseless indeed.

CALVERT CITY BAPTIST

Galen L. Hargrove, pastor.
Bible school at 10 a.m.
Worship services at 11 a.m.
and 7:30 p.m.
Training Union at 6:45 p.m.

NEW HARMONY BAPTIST

Rev. Jack R. Doom Pastor
Preaching services each Sun-
day at 11:00 A. M. and 7:00 P.
M.
Sunday school at 10 A. M.
Prayer meet- Wednesday
at 1:00 P. M.

MT. MORIAH PRIMITIVE BAPTIST CHURCH

(Gordon Hearon Pastor)
Preaching each Second, Fourth
and Fifth Sundays Services at
11 o'clock.
Worship Services 11 a.m. and
7:45 p.m.

BARDIN METHODIST CHURGE

Hoyt Owen, Pastor
Hardin: Sunday 10:00 a.m.
every Sunday. Worship third
Sunday at 11:00 a.m.; First Sun-
day at 7:00 p.m.
Dexter: Sunday school 10:00
a.m. every Sunday except third
Sunday and Worship at 11:00
Olive: Sunday school 10 A. M.

BENTON FIRST METHODIST

Rev. W. D. Grissom Pastor
Joe Coulter, Gen. Supt.
Sunday school at 9:45 A. M.—
Morning worship service at
10:50 A.M.— Sermon by the Pas-
tor.
Evening Service at 7 p.m. MYF
at 6 p.m.

CALVERT CITY METHODIST
H. C. Fletcher, pastor.
Church School at 10 a.m.
Morning worship at 11 a.m.
Evening worship at 7:00
Youth meeting at 6:30
Midweek services Wednesday at
7:00 p.m.

BENTON FIRST BAPTIST
Rev. L. A. Tucker, pastor.
Jimmy Lester, supt.
Sunday School at 9:45 a.m.
Worship services at 10:45 a.m.
and 7:30 p.m.
BTU at 6:30 p.m.
Wednesday prayer services at
7:30 p.m.

LAKEVIEW MISSIONARY
BAPTIST CHURCH
Rev. James Reed, pastor
Roy Barlow, S. S. Supt.
Paul Gregory, Trn. Union Pres
Sunday School, 9:45 a.m.

Worship services at 11 a.m.
and 7 p.m. each Sunday.
Training Union at 6 p.m.

NEW HOPE BAPTIST

Sherman Holt, pastor.
Sunday school at 10 a.m.
Worship service at 11 a.m.
Sunday night service 7:30
Wednesday night prayer meet-
ing at 7:30 o'clock.

HASLET BAPTIST CHURCH

John W. Kloss, pastor.
R. C. Walker, superintendent
Sunday School at 10 a.m.
Worship service every Sun-
day at 11 a.m. and 7:15 p.m.
BTU at 6:30 p.m. Prentice Do-
nohoo, director.
Mid-week prayer service at
7 p.m.

NEW ZION MISSIONARY BAPTIST CHURCH

Edward Crowell, pastor.
Freddie Lee Pace, S. S. Supt.
Sunday School, 10:00 A. M.
Preaching at 11 A. M., and 1
P. M. each Sunday.
BTU at 7 p.m.
Hafford Staples, Director.
Prayer meeting each Wednes-
day evening.

FIRST MISSIONARY BAPTIST

J. Frank Young, Pastor
Kenneth Nichols, S. S. Supt.
Van Wyatt, BTU Director
Sunday School — 9:30 a.m.
Morning Worship — 10:45 a.m.
Prayer Service, Wed. — 7:30

BRIENSBURG BAPTIST

T. L. Campbell, pastor
Sunday School at 10:00 a.m.
Harry T. Culp, Gen. Supt.
Preaching services at 11:00
a.m. and 7:00 p.m.
Training Union at 6:00 p.m.
Solon Smith, Gen. Director
Midweek Prayer Services,
Wednesday at 7:00 p.m.

VANZORA MISSIONARY BAPTIST CHURCH

Rev. J. C. Hicks, pastor.
Erise Thompson, superintend-
ent.
Sunday School at 10 a.m.
Worship service at 11 a.m. and
7 p.m. on Sundays.
Prayer meeting at 7:30 p.m.,
Wednesdays.

Read The Courier Classified Ads

TREAS LUMBER COMPANY

Lumber, Millwork, Doors, Paint, Builders' Hardware

'FROM FOUNDATION TO ROOF—

WE HAVE IT"

1313 Poplar Phone 2301 Benton, Ky.

INSURANCE OF ALL KINDS Morgan, Trevathan and Gunn

Insurance Agency

INSURE NOW — TOMORROW MAY BE TOO LATE

PHONE 2151

BENTON, KY.

EXPERIENCE

Long practical experience, prompt and efficient
service, sufficient merchandise to allow any family
a selection according to their own wishes.

FILBECK CANN FUNERAL HOME

Ambulance Service, Oxygen Available
Phone 4681 or 2091, Benton, Ky.

Stop At

TADES PACKAGE STORE

- Your Business Appreciated -

2600 Bridge St. Paducah, Ky.

The Marshall Courier, Benton Ky.

Courier, Benton Ky.

Mr. and Mrs. Clarence Thomp-
son of Route 2 were among the
shoppers in Benton Saturday.

Mr. and Mrs. Talmadge Riley
of Route 3 were visitors in Ben-
ton Saturday.



Loftie
by LARSEN
...THE NEW
CUSTOM-LOOK K
100% nubry
chenille twinkle-
with shining golden
and finished with a wealth of
details. In off white,
turquoise, peppermint
or navy. Sizes 10 to 18.

Advertised in Mademoiselle



REAP A

BRING OUR

HERE ARE A

• SIMMON
Compi
tress H

only

• BIGELOV
12 ft.
scroll p
only

• ALL WO
Choice
Regula

• SOFA BE
Choice

• BED RO
Choice
and Inn

• FREE - K
in Harv

RHODE

Mayfield, Ky

A N

Big
savings
at our

A Harvest

Domestic 5

WAT & LORD GINGHAM
36-Inches Wide

BELTON PRINTS
36-Inches Wide

FLORETTA BROADCLOTH
36-Inches Wide

WITTON TWEED
39-Inches Wide

Wash Silk 2

36-39 Inches Wi

45-In. Beautiful Shades, Includ

CREPES
45-Inches Wide

TAFFETA
45-Inches Wide

PRINTED VELET CORDS
37 Inches Wide — Eight Difi

HARVES

4 TOWELS
81x99 SHEET
7 WASH CLO
2 WHITE TO

ANDE

SOUTH SIDE SQ



CONFIDE IN YOUR
DOCTOR!
HAVE Confidence
IN US!

Your doctor knows best what to do in case of illness. We
know best how to accurately fill his prescriptions. Our
skilled pharmacists are always at your service.

LIST DRUG STORE

PADUCAH, KY.

Hawkins Jewelry

SAME
PRICE,
CASH or
CREDIT

WATCH REPAIRING

Diamonds - Watches - Silverware

GIFTS FOR EVERY OCCASION

11th and Main St.

Benton, Ky.

CITY HALL
BUILDING
PHONE
6622



REINFORCED — CONCRETE — PRECAST

Approved

SEPTIC TANKS

500 GALLON CAPACITY

as required by Kentucky State Dept. of Health

DELIVERED AND LOWERED

4" Concrete Drain Tile for Filtration Field

Katterjohn Concrete Products

Dial 2-1186 — Paducah, Ky. — 10th & Jefferson

Use Only The Famous
"KATTER-BLOX"

STARS ON PARADE



MYRNA
LOY

BECAUSE HER NAME WAS
LOY, THE CASTING MEN
THOUGHT SHE WAS AN ORIENTAL.
AND CAST HER ACCORDINGLY
RECENTLY THE WORLDS LARGEST
CHRYSANTHEMUM WAS NAMED AFTER HER!

'GILDA GAY'



PEE WEB

