



MURRAY STATE
UNIVERSITY

Murray State's Digital Commons

Marshall Courier

Newspapers

10-14-1954

The Marshall Courier, October 14, 1954

The Marshall Courier

Follow this and additional works at: <https://digitalcommons.murraystate.edu/mc>

Recommended Citation

The Marshall Courier, "The Marshall Courier, October 14, 1954" (1954). *Marshall Courier*. 259.
<https://digitalcommons.murraystate.edu/mc/259>

This Newspaper is brought to you for free and open access by the Newspapers at Murray State's Digital Commons. It has been accepted for inclusion in Marshall Courier by an authorized administrator of Murray State's Digital Commons. For more information, please contact msu.digitalcommons@murraystate.edu.

Calvert

Drive-In Theatre

Highway 95 — 3 Miles South of Calvert City, Ky. Phone 304

Ends Friday Oct. 15 Double Feature

"Relentless"

In Technicolor, starring Robert Young

"Call Me Mister"

In Technicolor, starring Betty Grable and Dan Dailey

Sat. Only Oct. 16

Double Feature

"Killer Leopard"

Starring Johnny Sheffield

"Phone Call From A Stranger"

Starring Shelly Winters and Gary Merrill

Sun. & Mon. Oct. 17-18

Double Feature

"Knock on Wood"

In Technicolor, starring Danny Kaye

"Rose of Cimarron"

In Natural Color, starring Mala Powers

Tues. & Wed. Oct. 19-20

Double Feature

TEEN AGE

RECKLESS! TRIVOLIOUS! DANGEROUS!

YOUTH ON A MORAL BINGE

YOUTH A FLAME

...They called me names—But one name I won't take!... EVEN IF I MUST KILL TO STOP THEM!

UNCEASED REALISM!

"Youth Aflame"

The screen blazes with Youth on a wild spree!

These pictures will be shown at regular admission price.

Thurs. & Fri. Oct. 21-22

Double Feature

"Pushover"

Starring Fred MacMurray, Phil Carey and Kim Novak

"Red Skies of Montana"

In Technicolor, starring Richard Widmark

ATTEND ANNUAL

CALVERT P-TA

HALLOWEEN CARNIVAL

SATURDAY, OCTOBER 30

— at —

CALVERT GYM

7:00 P. M. Til?

BOOTHS - GAMES - FOOD

FUN FOR EVERYONE!

All Proceeds to Be Used for Repairs &

Additions to Calvert School

For The Night of Witchery



Glowing witches, scowling black cats, grinning pumpkins and surprisingly happy little bats—these cardboard cut-outs, available almost everywhere, make most effective and inexpensive decorations for your Halloween party.

Cup cakes, decorated with these same symbols of the night of pranks, will carry out the theme of your decorations and delight the small fry. Cup cakes, or other light food might be enough to serve with a good beverage.

After a session of playing games, ducking for apples and trying to bite that elusive apple on a string, nothing will be as popular as good, refreshing drinks. Glasses of pale dry ginger ale and grape juice, mixed half and half, will meet with the approval of your young guests. Ginger ale, by itself, icy cold and bubbling, is always a refreshing drink.

Here is an excellent combination of fruit juices to combine with ginger ale for a children's party.

Fruit Ginger Medley

1 cup pineapple juice 1 cup apple juice
1 cup grape juice 1/2 cup sugar syrup
1/2 cup lemon juice Pale dry ginger ale

Combine fruit juices and sugar syrup, blending well. Divide among eight tall glasses, pouring over ice cubes. Fill glasses with pale dry ginger ale.

BIRTHS

At McClain Clinic

Mr. and Mrs. Robert Wiles of Benton Route 7 are the parents of a son born Oct. 6.

Mr. and Mrs. Will Parker Jr. of Benton Route 7 are the parents of a girl born Oct. 7.

Mr. and Mrs. Varnell Pitt of Route 5 are the parents of a son born Oct. 7.

Mr. and Mrs. Calvin Meadows of Paducah Route 3 are the parents of a girl born Oct. 7.

Mr. and Mrs. Herman Johnson of Hardin are the parents of a girl born Oct. 9.

Mr. and Mrs. J. D. Barrett of Gilbertsville Route 1 are the parents of a girl born Oct. 11.

Mr. and Mrs. Carlos Warren of Benton are the parents of a son born Oct. 11.

Mr. and Mrs. Kenneth Croley of this county are the parents of a girl born Oct. 11.

SHERIFF'S SALE

By virtue of a judgment directed to me, which was issued to me from the clerk's office of Marshall County Court, in favor of Lawrence Collins against Ray Smith, I or one of my deputies will on Friday, Oct. 29, 1954, at one o'clock p.m. at the courthouse door in Benton, Marshall County, Kentucky, expose to public sale to the highest bidder the following property or so much thereof to satisfy the amount of the plaintiff's debt, interest and cost, to-wit: One Silvertone TV set with antenna. Amount to be raised

Leukemia is Fatal To Mrs. McCuiston In Detroit, Mich.

Mrs. Macon McCuiston, the former Velda Cox of Benton, died last Sunday in a Detroit, Mich., hospital. Death was caused by leukemia.

The body was sent to Roberts Funeral Home in Mayfield Wednesday. Funeral services were held at the Church of Christ in Mayfield Thursday afternoon. Burial was in Highland Park Cemetery.

Mrs. McCuiston was the daughter of Ira L. Cox of Benton Route 2. Besides her father, she is survived by her husband and two daughters, Sue and Dianne McCuiston; and two sisters, Mrs. C. B. Hill of McCracken County



Turn to the Lord your God, for He is gracious and merciful...and of great kindness.—(Joel 2, 13.)

No mortal is perfect, without sin. But we fail, we can and must try again. God is ever merciful. He will forgive the truly repentant again and yet again. He is of 'great kindness' beyond human understanding.

and Miss Willie May Cox of Chicago.

Read the Best, The Courier

KY. DAM SUNSET DRIVE-IN THEATRE

Two Miles from Dam on Highway 641

Marshall County's Only Drive-In with Four

Track Stereophonic Sound

ALL PICTURES SHOWN ON WIDE SCREEN

Friday October 14

Blackbeard and the Pirate

Technicolor

With Robert Newton, Linda Darnell and William Bendix

Saturday October 16

Taza, Son of Cochise

Technicolor

With Rock Hudson and Barbara Rush

PLUS

Guerilla Girl

Introducing Marianna

SUNDAY, October 17 Through Thursday, October 21

5 BIG DAYS

CINEMASCOPE!

"Seven Brides for Seven Brothers"

In Technicolor

Jane Powell, Howard Keel

4 Track Stereophonic Sound

Read the Best, The Courier

It's housewarming time at

FLEMING FURNITURE CO.

Trade-in now and get your beautiful new

DUO-THERM OIL HOME HEATER



\$12.95 Thermostat FREE With First 18 HEATERS

- Exclusive Dual Chamber Burner gets more heat from every drop of oil. Extra capacity for extra-cold days.
- Big radiant doors for fast warmups.
- Big heat chamber and Waste Stopper put more heat in your home, faster.

Come in now and choose a Duo-Therm, America's most beautiful and finest-performing oil home heater. See our selection of Duo-Therm heaters for every need and budget. Models shown also available without SELF-Lighter.

50,000 BTU HEATER \$99.95
POWER AIR BLOWER \$29.95

FREE INSTALLATION

FLEMING FURNITURE CO.

BENTON

KENTUCKY

Two New Fall Cover Crop Practices are Announced

By EVERETT TREAS

There has recently been added two fall cover crop practices to the Marshall County ASC Program.

Practice 23: Establishment of a vegetation cover crop in the fall of 1954 for soil erosion protection during the winter, and for forage production. This practice is applicable to any suitable land on the farm where the protective cover on such land was damaged by drought. Pasturing consistent with good farm management will be permitted, and a crop may be harvested for hay and for silage.

but not for seed or grain.

Practice 24: Establishment of a vegetation cover in the fall of 1954 to protect cropland which will be shifted from crop production in 1955. This practice is applicable only to cropland which will be shifted from the entire 1955 crop year from crop production to green manure or cover crops. Pasturing consistent with good farm management may be permitted, but no hay or seed can be harvested. For any additional information, please contact the Marshall County ASC Office at once. Farmers who have been ap-

proved for the should come to the and place their

Laugh and World

First Brakman

advised for a

Second Brakman

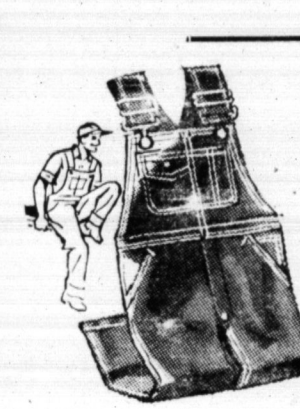
advised for a

F. B. "What do

S. B. "They all

can have mine."

WORK CLOTHES VALUE



Boys 8-ounce Sanforized Zipper

DUNGAREES reg. 1.79

Carhartt Red Iron Workers (union made)

OVERALLS

Carhartt 11 oz. Red Duck Carpenter

OVERALLS

Union Made

DUCKHEAD OVERALLS

DUCKHEAD MATCHED SUITS

In Gray - Tan - Brown - Green

PRICED RIGHT

COOKSEY & SMITH

DEPT. STORE



THE CHAIR THAT

ROCKS and

REVOLVES

THE SENSATIONAL

LOUNGER

PERFECT TO HAVE

The only chair of its kind that has been designed to give you the most comfortable seating position in any chair.

without any of the usual drawbacks of other chairs. It's the only chair that gives you the most comfortable seating position in any chair.

without any of the usual drawbacks of other chairs. It's the only chair that gives you the most comfortable seating position in any chair.

without any of the usual drawbacks of other chairs. It's the only chair that gives you the most comfortable seating position in any chair.

without any of the usual drawbacks of other chairs. It's the only chair that gives you the most comfortable seating position in any chair.

without any of the usual drawbacks of other chairs. It's the only chair that gives you the most comfortable seating position in any chair.

without any of the usual drawbacks of other chairs. It's the only chair that gives you the most comfortable seating position in any chair.

without any of the usual drawbacks of other chairs. It's the only chair that gives you the most comfortable seating position in any chair.

without any of the usual drawbacks of other chairs. It's the only chair that gives you the most comfortable seating position in any chair.

without any of the usual drawbacks of other chairs. It's the only chair that gives you the most comfortable seating position in any chair.

without any of the usual drawbacks of other chairs. It's the only chair that gives you the most comfortable seating position in any chair.

without any of the usual drawbacks of other chairs. It's the only chair that gives you the most comfortable seating position in any chair.

without any of the usual drawbacks of other chairs. It's the only chair that gives you the most comfortable seating position in any chair.

without any of the usual drawbacks of other chairs. It's the only chair that gives you the most comfortable seating position in any chair.

without any of the usual drawbacks of other chairs. It's the only chair that gives you the most comfortable seating position in any chair.

without any of the usual drawbacks of other chairs. It's the only chair that gives you the most comfortable seating position in any chair.

without any of the usual drawbacks of other chairs. It's the only chair that gives you the most comfortable seating position in any chair.

without any of the usual drawbacks of other chairs. It's the only chair that gives you the most comfortable seating position in any chair.

without any of the usual drawbacks of other chairs. It's the only chair that gives you the most comfortable seating position in any chair.

without any of the usual drawbacks of other chairs. It's the only chair that gives you the most comfortable seating position in any chair.

without any of the usual drawbacks of other chairs. It's the only chair that gives you the most comfortable seating position in any chair.

without any of the usual drawbacks of other chairs. It's the only chair that gives you the most comfortable seating position in any chair.

without any of the usual drawbacks of other chairs. It's the only chair that gives you the most comfortable seating position in any chair.

without any of the usual drawbacks of other chairs. It's the only chair that gives you the most comfortable seating position in any chair.

without any of the usual drawbacks of other chairs. It's the only chair that gives you the most comfortable seating position in any chair.

without any of the usual drawbacks of other chairs. It's the only chair that gives you the most comfortable seating position in any chair.

without any of the usual drawbacks of other chairs. It's the only chair that gives you the most comfortable seating position in any chair.

without any of the usual drawbacks of other chairs. It's the only chair that gives you the most comfortable seating position in any chair.

without any of the usual drawbacks of other chairs. It's the only chair that gives you the most comfortable seating position in any chair.

without any of the usual drawbacks of other chairs. It's the only chair that gives you the most comfortable seating position in any chair.

without any of the usual drawbacks of other chairs. It's the only chair that gives you the most comfortable seating position in any chair.

without any of the usual drawbacks of other chairs. It's the only chair that gives you the most comfortable seating position in any chair.

without any of the usual drawbacks of other chairs. It's the only chair that gives you the most comfortable seating position in any chair.

without any of the usual drawbacks of other chairs. It's the only chair that gives you the most comfortable seating position in any chair.

without any of the usual drawbacks of other chairs. It's the only chair that gives you the most comfortable seating position in any chair.

without any of the usual drawbacks of other chairs. It's the only chair that gives you the most comfortable seating position in any chair.

without any of the usual drawbacks of other chairs. It's the only chair that gives you the most comfortable seating position in any chair.

without any of the usual drawbacks of other chairs. It's the only chair that gives you the most comfortable seating position in any chair.

without any of the usual drawbacks of other chairs. It's the only chair that gives you the most comfortable seating position in any chair.

without any of the usual drawbacks of other chairs. It's the only chair that gives you the most comfortable seating position in any chair.

without any of the usual drawbacks of other chairs. It's the only chair that gives you the most comfortable seating position in any chair.

without any of the usual drawbacks of other chairs. It's the only chair that gives you the most comfortable seating position in any chair.

without any of the usual drawbacks of other chairs. It's the only chair that gives you the most comfortable seating position in any chair.

without any of the usual drawbacks of other chairs. It's the only chair that gives you the most comfortable seating position in any chair.

without any of the usual drawbacks of other chairs. It's the only chair that gives you the most comfortable seating position in any chair.

without any of the usual drawbacks of other chairs. It's the only chair that gives you the most comfortable seating position in any chair.

without any of the usual drawbacks of other chairs. It's the only chair that gives you the most comfortable seating position in any chair.

without any of the usual drawbacks of other chairs. It's the only chair that gives you the most comfortable seating position in any chair.



THE CHAIR THAT

ROCKS and

REVOLVES

THE SENSATIONAL

LOUNGER

PERFECT TO HAVE

The only chair of its kind that has been designed to give you the most comfortable seating position in any chair.

without any of the usual drawbacks of other chairs. It's the only chair that gives you the most comfortable seating position in any chair.

without any of the usual drawbacks of other chairs. It's the only chair that gives you the most comfortable seating position in any chair.

without any of the usual drawbacks of other chairs. It's the only chair that gives you the most comfortable seating position in any chair.

without any of the usual drawbacks of other chairs. It's the only chair that gives you the most comfortable seating position in any chair.

without any of the usual drawbacks of other chairs. It's the only chair that gives you the most comfortable seating position in any chair.

without any of the usual drawbacks of other chairs. It's the only chair that gives you the most comfortable seating position in any chair.

without any of the usual drawbacks of other chairs. It's the only chair that gives you the most comfortable seating position in any chair.

without any of the usual drawbacks of other chairs. It's the only chair that gives you the most comfortable seating position in any chair.

without any of the usual drawbacks of other chairs. It's the only chair that gives you the most comfortable seating position in any chair.

without any of the usual drawbacks of other chairs. It's the only chair that gives you the most comfortable seating position in any chair.

without any of the usual drawbacks of other chairs. It's the only chair that gives you the most comfortable seating position in any chair.

without any of the usual drawbacks of other chairs. It's the only chair that gives you the most comfortable seating position in any chair.

without any of the usual drawbacks of other chairs. It's the only chair that gives you the most comfortable seating position in any chair.

without any of the usual drawbacks of other chairs. It's the only chair that gives you the most comfortable seating position in any chair.

without any of the usual drawbacks of other chairs. It's the only chair that gives you the most comfortable seating position in any chair.

without any of the usual drawbacks of other chairs. It's the only chair that gives you the most comfortable seating position in any chair.

without any of the usual drawbacks of other chairs. It's the only chair that gives you the most comfortable seating position in any chair.

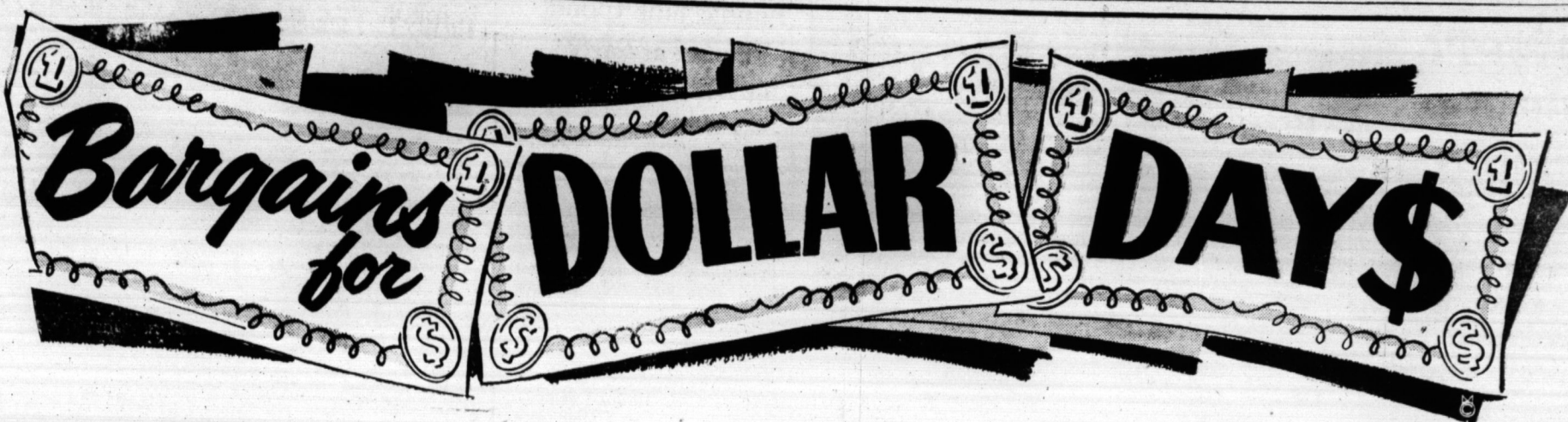
without any of the usual drawbacks of other chairs. It's the only chair that gives you the most comfortable seating position in any chair.

without any of the usual drawbacks of other chairs. It's the only chair that gives you the most comfortable seating position in any chair.

without any of the usual drawbacks of other chairs. It's the only chair that gives you the most comfortable seating position in any chair.

without any of the usual drawbacks of other chairs. It's the only chair that gives you the most comfortable seating position in any chair.

without any of the usual drawbacks of



VALUES GALORE for FRIDAY & SATURDAY

Gerbers	BABY FOOD	12 cans	\$1.00
Stokley or Dole No. 602 can	PINEAPPLE JUICE	3 cans	1.00
Standard 4602 Can	TOMATO JUICE	4 cans	1.00
Swans Down	CAKE MIXES	3 cans	1.00
	KECO COFFEE	1 lb.	1.00
Stokley	TOMATO CATSUP	4 cans	1.00
No. 2 Can	SOUR CHERRIES	4 cans	1.00
Hunts or Stokley No. 300 Can	FRUIT COCKTAIL	4 cans	1.00
No. 300 Size Can	HUNTS PEACHES	5 cans	1.00
Standard	TALL MACKEREL	5 cans	1.00
12 oz. Jar Delited	APPLE JELLY	7 cans	1.00
12 oz. Jar Delited	STRAWBERRY PRESERVES	3	1.00
	JELLO	12 pkgs.	1.00
American	VIENNAS	12 cans	1.00
Taste	POTTED MEAT	21 cans	1.00
No. 300 Austex	SPAGHETTI and MEAT BALLS	4 for	1.00
No. 300 Bonnets	SPHAGHETTI and CHEESE	11 cans	1.00
Pet or Carnation	MILK	8 tall cans	1.00
	STANDARD OLEO	5 for	1.00
Bonds	SWEET PICKLES	pints 4 for	1.00
	LARD	5 lbs.	1.00
1-4 lb.	LIPTON'S TEA	3 for	1.00
No. 300 Bushs	BUTTER BEANS	11 cans	1.00
Bushs No. 300	RED KIDNEY BEANS	11 cans	1.00
Bushs No. 300	PORK & BEANS	11 cans	1.00



QUALITY MEATS

FIELDS TENDER	FRANKS	3 LBS	\$1
FRESH MADE DAILY	HAMBURGER	3 LBS	\$1
SUGAR CURED	JOWLS	4 LBS	\$1
No. 303 Standard	MUSTARD GREENS	11 cans	\$1.00
No. 300 Size Dry	BLACKEYE PEAS	11 cans	\$1.00
No. 300 Size Standard	YELLOW EYE PEAS	11 cans	\$1.00
No. 1 Size Standard	TOMATOES	11 cans	\$1.00
U. S. NO. 1 WHITE	POTATOES	10 LBS	39c
		30 pounds	\$1.15
GOOD COOKING WINESAP	APPLES	8 LBS	49c
		1-2 Bushel	\$1.39
ACRO	FLOUR	10 LB. BAG	MEAL 2LB. BAG
		BOTH FOR	\$1.00
Bushs No. 300	GREAT NORTHERN	11 CANS	1.00
Bushs No. 300	NAVY BEANS	11 CANS	1.00
Miss America — No. 303	TURNIP GREENS	11 CANS	1.00

Superette

Benton, Ky.

U-TOTE-EM

Super Market Has Complete Line Diabetic Foods

Super Mkt.

Junction Hiways 68 & 641
500 Car Parking Lot

Our Neighbors

Mr. and Mrs. Bob McWaters, Mr. and Mrs. John Strow and children visited the family of Bob's brother in Central City last Sunday.

Rev. George Long of Hardin was carried Monday to the Baptist Hospital in Paducah for surgery.

Gerald Maupin came in from Fort Knox and spent two weeks with his parents, Mr. and Mrs. Louis Maupin in Benton. He has now gone to Ft. Devins, Mass., to continue service there.

Stan Williams has arrived in Benton from Korea.

Jim Frank Brown of Route 1 was a business visitor in Benton Tuesday.

Mrs. Pearl Sirls is spending a few days with Mrs. Clevie Ross in Murray this week.

CARD OF THANKS

We wish to thank everyone for the kindness shown us during the death of our dear wife and mother, Mrs. Allie Darnell. Especially do we thank the Unity Quartet, the Rev. Edward Crowell, and Rev. Lloyd Wilson, Dr. J. V. Stark, and the Filbeck-Cann Funeral Home, to all who donated such beautiful flowers, also the comforting words, or to anyone who helped in any way, may God bless you. Ham Darnell and family.



It's the time to reserve your winter comfort!

When you get your reserved seats for that first football game, you know it's high time to reserve your winter comfort, too. One phone call takes care of it; our fuel oil trucks are ready to deliver winter comfort right to your door.

It's the job in America's competitive oil business that no one in this community is out in the cold. Our automatic delivery helps us do this job. When you call, we'll tell you all about it. Your call will pay for itself in continuous heating comfort for your family all winter long.

SHELL FUEL OIL

IT'S BETTER

SERVICE OIL CO.

Benton, Ky.



Cover Crop Unmounded

Laugh and World

VALUES

Zipper

Workers (union made)

LS

S

SUITS

SMITH

ORE

AMAZING SPECIAL OFFER

PERFECT TO

GIVING YOU

Family chair — at on these LAZY SUSAN

Smart Modern Styling —

CLARK in choice of 3 decorative FOAM RUBBER —

backed by 5-YEAR famous BOLTALEX of color!

COME IN TODAY FOR A SITTING

Phone 2061

ATURE CO

Miss Ann Solomon Becomes Bride In Candlelight Ceremony at Home

Beautiful in its simplicity was the marriage of Miss Elizabeth Ann Solomon, daughter of Mr. and Mrs. Leighton Solomon of Benton, to A2-c James Harrod Cromwell, son of Mr. and Mrs. Peyton B. Cromwell, also of Benton.

The double ring ceremony was performed by candlelight before an improvised altar in the home of the bride's parents on Monday, October 11, at 4:30 p.m. with Rev. Bill Williams, minister of the First Christian Church of Benton, officiating.

The altar was arranged of white gladioli and stock with interspersed salad leaves and ferns before the living room fireplace. Tall white tapers, set in crystal candelabra were used, with flowers as the setting for the mirrored mantel. The house was decorated throughout with white flowers and candle light.

A program of organ music was presented by Miss Margaret Heath of Benton. Mr. John

Cromwell, soloist, of Princeton, "Because" preceding the ceremony and "The Lord's Prayer" by Malotte was sung as the benediction as the couple knelt on a white satin pillow. The traditional wedding marches were used for the processional and recessional. Mr. Jim Solomon, brother of the bride, lighted the candles.

The bride, who was given in marriage by her father, entered on a white bridal carpet laid by her younger brother, Mr. Weldon Solomon. She wore a floor length gown of white nylon tulle over white satin, styled with a fitted bodice of tiny folds and fastened to a bouffant skirt, trimmed with a wide insertion of lace. She wore a single strand of pearls, which was a gift of the groom. Her fingertip veil of illusion was fastened to a bandeau of lace and beaded sequins. The bride carried her white Bible, which was a gift on her

sixth birthday, topped with a purple throated orchid with tiny satin streamers.

Miss Jo Ann O'Daniel, who was the bride's only attendant, wore a blue gown fashioned along the same lines as the bride's, with a lace beiter. She carried a cascade bouquet of blue and white.

Mr. Peyton Boyd Cromwell, brother of the groom, served as best man.

The bride is a graduate of Benton High School and Christian College, Columbia, Mo. She was recently employed in the Bank of Marshall County.

The groom is a graduate of Tighman High School and received his B. S. degree from Murray State College in 1952. He is now serving with the United States Air Force as a radar technician. He has just completed a 12-month tour of duty in Korea.

The bride's mother wore a teal blue velvet with navy accessories and a corsage of pink rose buds. The mother of the groom wore navy with navy and white accessories and a corsage of pink rose buds.

For traveling, the bride chose a 2-piece Dior fashion of charcoal and white silk linen, using black accessories. She wore the orchid from her bridal bouquet.

The reception following the wedding, was held in the dining room of the home. The bride's table was overlaid with broadened linen, with a three tiered wedding cake, topped with a wedding bell that poised over a hovering dove holding two wedding rings. Mrs. Irvin Waldman and Miss Beverly Riley served.

Immediately after the reception, the young couple left on a honeymoon trip to Alamogordo, New Mexico, where the groom is stationed at Holloman Air Force Base.

Out of town guests were Mr. and Mrs. Peyton B. Cromwell, Mr. and Mrs. Lionel Solomon, Miss Kitty Wilkins, Mr. James D. Solomon, Mrs. Hoyt Womack, Mr. and Mrs. Clarence Leneave and Mrs. Abbie Solomon of Paducah, Mr. and Mrs. Lois Williams and daughter, Lucretia, and Mrs. Josephine McShane of Hopkinsville, and Mr. and Mrs. John Cromwell of Princeton.

SOCIAL and PERSONAL

Mr. and Mrs. Albert Hill and Mr. and Mrs. Leonard Hill have returned from a trip to Kansas City, Kan., where they attended the reunion of the 35th Infantry Division.

Miss Shirley Hayden has returned to her job as stenographer at Solomon & McCallum Insurance Agency. Miss Hayden was away from work six weeks because of a broken collar bone.

Mr. and Mrs. W. B. Sled of Route 6 were visitors in Benton last Saturday.

Mr. and Mrs. Jerry Smith of Symsonia are the parents of a son born last week at Baptist Hospital in Paducah.

H. E. Dyke of Gilbertsville was in town on business last week.

E. A. Ross has returned to his home in La Russell, Mo., after visiting his sister, Mrs. S. V. Gregory and other relatives here.

Mr. and Mrs. Raymond Borders of Hardin Route 1 were Saturday business visitors in Benton.

Mr. and Mrs. Virgil Lyles of Kirksey Route 1 were among the many Saturday visitors in Benton.

ALL RUBBER TOYS

DURABLE AND SAFE



Barn Set \$3.49



Fire Station \$1.49



Box of Assorted FARM ANIMALS 89c to \$1.49

Lay-Away
Toys Now
For
Christmas!



Building BRICKS \$3.45

Rottgering's
Toyland

2600-2700 Cairo Road, Paducah, Ky

News From Hardin

By A. J. Wells

Mr. and Mrs. Galen Smith were in Paducah shopping Friday.

A. J. Wells was in Benton on Tuesday and while there visited Mr. and Mrs. Burk Warren.

Rev. and Mrs. Hoyt Owen and Miss Pat Owen of Sedalia were here Friday.

Miss Jessie Crosby of Hardin and Mr. and Mrs. Hardy Crosby of Paducah spent last weekend in St. Louis.

Gary Boggess, who is in school at Martin, Tenn., spent Saturday and Sunday with his parents, Mr. and Mrs. Guy Boggess. The Hardin School Band is progressing nicely under the direction of Mr. Brown of Calvert City.

Frank Connor of Wadesboro, was in town Saturday.

Mr. and Mrs. Terrell Darnall went to Detroit a few days ago and visited the Niagara Falls and other places of interest.

Mrs. Edith Hughes and daughter, Mrs. Voris Utley, were in Murray Sunday.

Mr. and Mrs. Joe Pace of Murray visited in Hardin Saturday.

Mr. and Mrs. Jim Staples visited Mrs. Staples' daughter, Mrs. Josephine Fitzgerald, and son, of Calvert City, last week.

Mrs. Wilma Barnett of Murray spent Monday with her son, Eugene Barnett, and Mrs. Barnett.

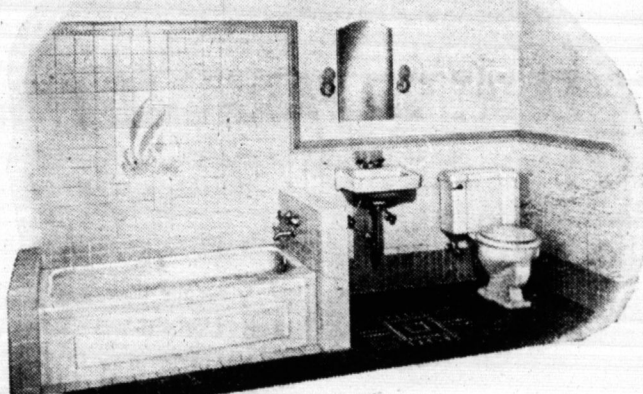
Mr. and Mrs. Leonard Davenport visited her sister, Mrs. Myrtle Conner, Mrs. Jane Cathey, Mr. Adron Conner, wife and daughter, near Paducah last weekend.

Mr. and Mrs. Will Parker of Benton are the parents of a daughter born October sixth at the McClain Clinic in Benton.

Mrs. Harold Lents of Center Line, Mich., has been visiting her mother, Mrs. Bart Washburn of Benton. Mrs. Washburn returned to Michigan with her daughter for a visit of about two months.

Mrs. Florence Love of Route 7 was among the visitors in Benton last week.

INSTALL THAT BATHROOM NOW!



3-PC. BATHROOM Complete

WITH CHROME TRIM
\$165.00 Value \$118.88

Other Specials:

\$55.00 300 gal. Septic Tank . . . \$39.95
\$85.00 500 gal. Septic Tank . . . \$59.50
\$189.50 66" Sink and Cabinet . . \$119.50
\$109.50 30 gal. Electric Heater . \$69.95
\$195.00 3 pc. Colored Bathroom \$149.50

Let us give you a free estimate on installing your heating system. All kinds including gas, oil or coal fired.

No Down Payment. 3 years to pay

Visit us — Call or write

Youngblood's

Phone 2-8444

1748 Broadway

Paducah, Ky.

OSCAR NOCHLIN CO.

Mayfield, Ky.

MAKES HISTORY IN

OCTOBER

History Making Values from the Store
That Has Made History in Mayfield

Men's JACKETS Cotton and Rayon Values to \$6.95 \$2.98	Cotton Plaid SHEET BLANKETS (Limited 2 to a Customer) \$1.00 each	PIECE GOODS 60" Woolens Values to \$4.00 99c
Men's WORK PANTS Khaki, Gray, Green \$1.99	Ladies' Coats, Suits, Dresses From the Leading Manufacturers at GREAT SAVINGS	Good Quality "LL" DOMESTIC 20c yd. Limit 20 yards
WORK SHOES Seamless Back Cowhide \$4.95	ALL WOOL COATS New Styles New Low Prices \$19.95	80 Square Fast Color COTTON PRINT 29c
Boy's Flannel Shirts Sizes 6 to 16 99c	Other Coats \$24.95 to \$39.95	CURTAIN SCRIM Special 10c
Boy's 8-oz. Sanforized DUNGAREES \$1.27	GIRLS COATS At New Low Prices 1 group Gabardine Coats, Spcl. \$7.95 All Wool Coats \$9.95 and up	COTTON BATTS Complete Line of Popular Batts
Children's Corduroy JIMMY ALLS 99c		40 Pair Ladies Indian Beaded Moccasin Loafers Special \$7.99

35 Years in the
Same Location

OSCAR NOCHLIN CO.

Open Friday Nite 'Til 8:30

Mayfield,
Ky.

NAL ITE

of Lon
trot today
unger O'
ing in De

Little of
parents of
Saturday
tal in Pa

of Gilberts-
visitor in
while here
Marshall

York of
in Benton

Reynolds
visited Mr.
in Benton
olds is the
Waters.

PERSON

Emphasizes "The Brand Name"
Recognize and Trust

... but lots of value

HEALTHY

ROY ZIPPER

HEALTHY

HEALTHY

HEALTHY

HEALTHY

HEALTHY

HEALTHY

HEALTHY

HEALTHY

HEALTHY

HEALTHY

HEALTHY

HEALTHY

HEALTHY

HEALTHY

HEALTHY

HEALTHY

HEALTHY

HEALTHY

HEALTHY

HEALTHY

HEALTHY

HEALTHY

HEALTHY

HEALTHY

HEALTHY

HEALTHY

HEALTHY

HEALTHY

HEALTHY

BAYHAM'S

SHOES OF DISTINCTION
Of Paducah, Kentucky



COLORS: • Brown • Black and Gray
IN SUEDE
Also in RED CALF

"Exclusively Ours"

\$6.95

Use Your
Charge Account

Baynham's
shoes of distinction

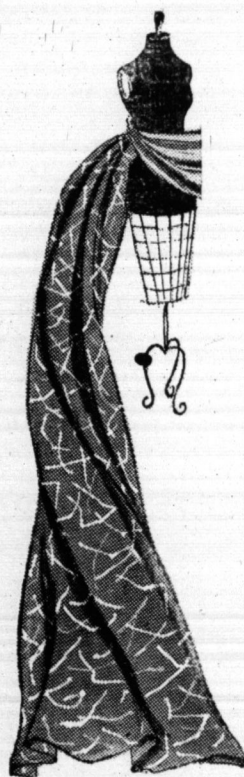
Open Friday
Nites 'til 8:30

408 Broadway — Paducah, Ky.

ANOTHER FABRIC SCOOP!!! AT
PADUCAH'S NEW REMNANT HOUSE

REGULAR 5.95 TO 10.95 YD.

ALL-WOOL FABRICS



3,000 Yards of World's Finest Imported and Domestic Woolens. Every piece is First Quality, shrunk and sponged, ready for the needle. Don't waste a minute getting here for these. A once in a lifetime opportunity to buy the finest woolens at the lowest price ever.

Coatings, Suitings and Skirt Materials

- Botany
- Juliard
- Pacific
- British Imports
- Stevens
- Anglo Fabrics
- Cashmere Blends
- Wyandotte
- Kanmak
- Somerville Chinchilla

Full 57" to 60" wide

\$1.99
YD.

"MILL-OUTLET OF WORLD'S FINEST FABRICS"

REMNANT HOUSE

123 S. FIFTH STREET

PADUCAH, KY.

OUR DEMOCRACY — by Mat

"We see by the papers..."

A SMALL NEWSPAPER ADVERTISEMENT OF LESS THAN 150 WORDS LAUNCHED THE CITY OF RICHMOND, VIRGINIA. IT RAN IN THE VIRGINIA GAZETTE AT WILLIAMSBURG 217 YEARS AGO AND WAS SIGNED BY WILLIAM BYRD, WHO OFFERED LOTS ON THE JAMES RIVER TO THOSE WHO WOULD BUILD HOUSES ON THEM.



THE LOCAL NEWSPAPER, THROUGH THE NEWS AND ADVERTISING IT PUBLISHES, CONTINUES AS A GREAT ECONOMIC AND CULTURAL MEETING-PLACE FOR THE COMMUNITY. WHETHER HELPING TO ESTABLISH A CITY OR SELL A SACK OF POTATOES, ITS COLUMNS ARE DEDICATED TO THE PROPOSITION THAT TRADE AND THE FREE INTERCHANGE OF INFORMATION KEEPS PROSPERITY GOING IN OUR DEMOCRACY.

Local News of Our Neighbors

Mr. and Mrs. Pete Gunn Sr. of Huntsville, Ala., have been visiting in the home of their son, Pete Gunn Jr. Mr. Gunn has returned home but Mrs. Gunn remained for a longer visit.

Mrs. W. D. Grissom of Memphis, Tenn., Mrs. Ralph Wortham and daughter, Sherry, of Paducah, spent Tuesday in the home of Mr. and Mrs. Clyde Kennedy (Charlene Haltom) at their home on Route 1.

Mrs. Luis Hendrickson and Mrs. Eli Myers of Route 1 were shoppers in town Wednesday.

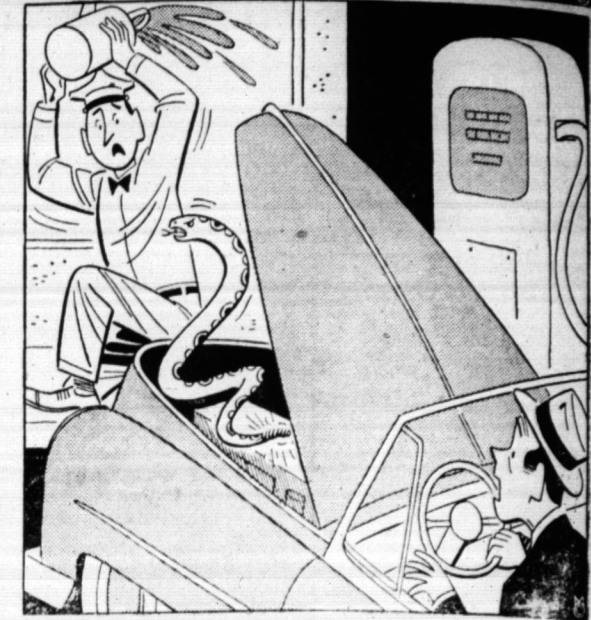
Mr. and Mrs. Pete Gunn of Benton are the parents of a daughter born October second at the Murray Hospital. They have named her Lillith Leah.

Mrs. Jim Morgan has gone to Detroit, Mich., to visit her daughter, Luberth, and son, Joe Morgan. Joe lives in Pontiac.

Mrs. Morgan went with Mr. and Mrs. Harold Lents.

Earl St. Marie has returned from a Kiwanis convention held Sunday, Monday and Tuesday at Nashville. Mr. St. Marie is lieutenant governor of Kiwanis.

CAR-TUNES



I THINK I'VE FOUND THAT
RATTLE IN YOUR MOTOR, SIR

If there's a rattle anywhere, our men will find it fast and fix it for sure. They know just where to look and exactly what to do!

**REPAIRS SEE YOUR BUICK
DEALER IN BENTON**

A. W. Edwards

Sid Puckett

Factory Trained and Experienced on All Types Repairs

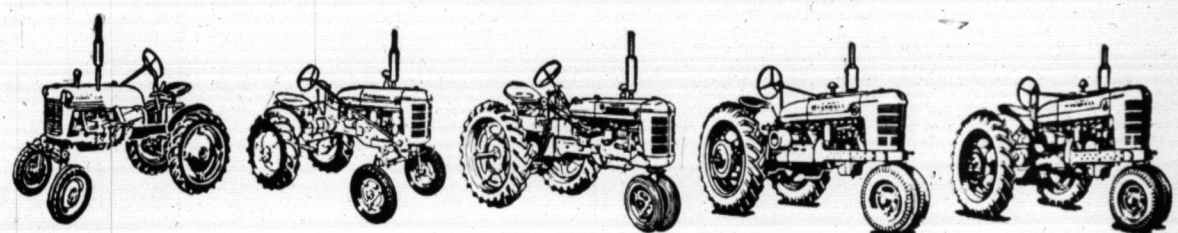
LAMPKINS' BUICK

1209 SOUTH MAIN

NEW LOWER PRICES

ON ALL FARMALL TRACTORS

HERE'S THE FAMOUS FARMALL FAMILY... power for every



Five Farmalls, built to last, enable you to increase their power to your needs for efficient field work, low-cost operation, long tractor life.

TRACTORS ARE YOUR BEST BUY

PRICES REDUCED

UP TO

20%

ON SOME MODELS

Come
in
and
Investigate
the New
Prices

We're Trading

If your tractor is getting old and... if it needs a major operation... is the time to TRADE it!

We'll Pay You Top Price for Your Old Outfit!

WE SELL GOOD PRODUCTS WORTH THE MONEY!

BOYD MOTOR COMPANY

Phone 2721

Benton, Ky.

600 N. Main

Calvert City Rate Hearing

THE PUBLIC IS HEREBY NOTIFIED that Calvert Telephone System, Inc., Calvert City, Marshall County, Kentucky, will hold a public hearing on the 17th day of October, 1954, apply to the Public Service Commission of Kentucky at its offices in Frankfort for approval of the following rates for telephone service, supplemental equipment, facilities and services, and for toll service originating at the subscriber's station, and for toll messages received at the subscriber's station on which the charges have been reversed with the consent of the person called.

GENERAL TARIFF

MONTHLY RATES FOR LOCAL EXCHANGE SERVICE, SUPPLEMENTAL EQUIPMENT, FACILITIES AND SERVICES

Within the defined base rate area of any exchange operated by the Calvert Telephone System, Inc.

Grade of Service	Existing Rates	Proposed Rate
Individual line	\$1.75	\$5.00
2-party line	1.50	4.00
Multi-party rural	Nil	3.00
5-party line	Nil	3.00
Extension telephone	Nil	1.50
Individual line	1.25	3.50
2-party line	1.00	3.00
5-party line	1.00	2.50
Multi-party rural	1.25	2.50
Extension telephone	Nil	1.00
Subscriber owned lines and sub-station equipment maintained by the subscriber and connected to telephone company facilities at base rate boundary line, minimum charge of 5 subscribers per line per subscriber		1.00
Switching key equipment	Nil	.35
Extension Bell signal	Nil	.50
Inter-Communication key station	Nil	3.00
Inter-Communication relay cabinets	Nil	5.00
Trunk lines to PBX or Inter-Communication installations	9.00	9.00
For each extra listing in the directory	Nil	.50
Individual line	Nil	.50
2-party line	Nil	.30
5-party line	Nil	.15

GENERAL TARIFF

A. B. X. Installations:

Special requirements of Private Branch Exchanges and other special equipment will be installed on the basis of a special contract negotiated with the subscriber with rates and charges based on estimated cost of facilities so contracted.

Lines to the main exchange or to another PBX connected to the main exchange will be installed on the same terms and charges now in effect for similar lines.

Changes in location of equipment, labor and costs will be charged to the subscriber.

Installation of a main line or extension telephone service connection charge, covering to some extent the cost of making such installation.

Installation of special wiring plans inter-communication systems and other special equipment will be charged to the subscriber at cost or material and labor.

Directory listings:

Cost of accounting and record changes

Subscribers who are absent from their premises for more than nine months, and who desire to have their telephone number and rights to service suspended, may have service discontinued and reserve their number for an available charge equal to one-half the regular monthly charge for the service affected.

Each message originating at a public paystation and terminating within the exchange area shall be charged, for each 6-minute or fraction thereof, as follows:

GENERAL TARIFF

Facilities and services:

Equipment, facilities and services not otherwise covered in the filed tariff schedule will be furnished at rates and charges negotiated with the subscriber by special contract, with said rates and charges based on the basis of the installed cost of the facilities so contracted.

REGULATIONS COVERING CONTRACTS FOR LOCAL EXCHANGE TELEPHONE SERVICE

Contracts for short term service, and private exchange service, are based on monthly contracts and bills rendered monthly in advance.

The company reserves the right to discontinue service without notice unless prompt payment of bill is made.

Service is suspended on account of non-payment of account and will be restored only upon payment of a restoration charge in the tariff in addition to payment of the bill.

DEFINITION OF AREAS AS THE BASIS FOR FURNISHING TELEPHONE SERVICE

The base rate area of any exchange shall be a radius of one mile from the central office, or the city limit, whichever is less.

The telephone company does not undertake to furnish service at any desired location, nor does it undertake to extend its facilities to remote sections where such extension is not warranted by public necessity as distinguished from individual desire, except where protection is afforded. The company does not exceed five times the annual exchange construction costs to be derived on account of the new construction.

The difference between five times the annual exchange construction costs and the actual construction costs shall be made.

The telephone company's obligation to furnish telephone service is dependent upon its ability to procure and retain suitable and right of way for the construction and maintenance of necessary circuits.

MOVING OF EQUIPMENT

1. Subscribers wishing to have equipment moved from one location to another should give written notice to the Commercial Office of the Company as far in advance of the date of change desired as is possible.

2. The Company will, subject to the usual charges, change the location provided it has facilities available, at as near the time prescribed by the subscriber as it is practicable and the conditions under which it is then working permit.

RESPONSIBILITY OF PAYMENT

1. The subscriber shall pay monthly in advance or on demand all charges for exchange service and equipment, and shall pay monthly or on demand all charges for toll service. The subscriber assumes full responsibility for all charges for exchange service and for toll service originating at the subscriber's station, and for toll messages received at the subscriber's station on which the charges have been reversed with the consent of the person called.

2. In the event of abandonment of the station, the non-payment of any sum due or any other violation by the subscriber of the Telephone Company's rules and regulations applying to the subscriber's contract, or to the furnishing of service, the Company may, without notice, either (a) suspend service until all violations have ceased, or (b) terminate the subscriber's contract without the suspension of service, or (c) following suspension of service, sever the connection and remove any of its equipment from the subscriber's premises.

3. When instrumentalities have been removed for non-payment, the contract is considered to have been terminated. Re-installation of the service may be made only upon the condition of a new contract.

DIRECTORY LISTINGS OR OMISSIONS

1. It is desirable that all subscribers shall be properly listed in the directory. Errors or omissions should be promptly reported to the Commercial Office of the Company. The Company assumes no liability whatsoever for damages accruing from such errors.

UNAUTHORIZED USE OF THE TELEPHONE

1. Telephone facilities and equipment are furnished for the use of the subscriber, members of the subscriber's domicile or establishment, employees or agents of the subscriber, only, except as the use of the service may be extended to joint users.

2. The use of obscene, lewd, abusive or threatening language over the telephone is forbidden. Subscribers shall be courteous and considerate of the operators and other Company employees at all times. Use of the telephone in making or assisting illegal transactions is forbidden.

3. All equipment furnished by the Company shall remain the property of the Company. Such equipment shall not be used for any toll or consideration to be paid by any other person than the subscriber, nor for performing any part of the work of transmitting, delivering or collecting any messages, where any toll or consideration has been or is to be paid any party other than the Telephone Company, without the written consent of the Company.

4. Subscribers may not disconnect or remove or permit others to disconnect or remove any apparatus installed by the Telephone Company, except upon the written consent of the Company.

5. In the event of a violation or infraction of the rules and regulations, or any part thereof, of the Telephone Company and service is denied or discontinued by the Company as a disciplinary measure and the violator reapplies for service to be established in any area served by the Company, the Company reserves the right to decide whether or not the service applied for shall be provided.

UNAUTHORIZED ATTACHMENTS

1. The telephone equipment, apparatus and lines furnished shall be carefully used and no instrument, appliance or device of any kind not furnished by the Telephone Company shall be attached to or in any way connected or used in connection with such telephones, equipment, apparatus or lines. In case any instrument, apparatus or device of any kind other than that furnished by the Telephone Company is attached to or connected with any part of the Company's property, the Telephone Company reserves the right to remove such instrument, apparatus or device and to suspend service without any claim on the part of the subscriber. The use of any cover, sticker, insert or attachment of any nature not furnished by the Telephone Company on or in its directories issued by it is prohibited.

NUMBERS MAY CHANGE

1. The subscriber has no property right in the telephone number or any right to continuance of service through any certain switching exchange and the Telephone Company may change the telephone number or the switching exchange whenever it deems it desirable in the conduct of its business or when the exigencies of the business require.

PARTY LINE SERVICE

1. When party line service is furnished, the Telephone Company reserves the right to cancel any party line contract, upon thirty days' notice, whenever in the judgment of the Company the use of and by the subscriber holding such contract is such, from continuous use or other causes, as to interfere with the reasonable use by other parties connected to the same line.

ACCESS TO SUBSCRIBER'S PREMISES

1. For the purpose of inspecting, repairing or removing any part of the Telephone Company's equipment, apparatus and lines on subscriber's premises, the Company's employees shall have access thereto at any reasonable hours.

2. No liability shall attach to the Telephone Company by reason of any defacement or damage to the subscriber's premises, resulting from the placing of the Company's instruments, apparatus and associated wiring on such premises, or by the removal thereof, when such defacement or damage is not the result of negligence on the part of the Company's employees.

TELEGRAMS BY TELEPHONE

1. Telegrams may be transmitted to or received from telegraph offices by telephone. Special arrangements between Western Union Telegraph Company and the Telephone Company provide that any telephone subscriber may have charges for messages sent or received through Western Union office charged to his telephone and collected with his telephone bill.

PUBLIC PAYSTATION TELEPHONES

1. The Telephone Company will install and properly maintain telephone instruments with associated coin boxes at locations which it considers convenient to the general public if, in the Company's judgment, there will be sufficient revenue to support the investment in such public telephone. In the event the Company receives an application for the installation of a paystation telephone at a location where, in the Company's judgment, insufficient revenue would be generated to support the investment in such a public paystation telephone, the service applied for will be installed only on the condition that the subscriber guarantee revenue in such an amount as is specified in the general tariff.

CONVERSING WITH OPERATORS

1. Subscribers are prohibited from conversing with operators. Difficulties in getting the service desired should be reported to the supervisor or to the manager. Operators do not have sufficient time to discuss such matters with subscribers, and to do so impairs the service to others.

2. Telephone operators are forbidden as agents of the Telephone Company to repeat messages for subscribers. In instances where the repeating of messages seems desirable to the subscriber, the operator may, of her own volition, assist the subscriber solely as his agent without liability of the Telephone Company.

Henry Riley Dies After Long Illness At Home in County

Henry Riley, 81, died Wednesday at his home on Mayfield Route 5. He had been ill a long time.

Besides his wife, Mrs. Martha Riley, he is survived by two daughters, Mrs. Ellis Newsome of Mayfield Route 5 and Mrs. Ruby Lockhart of Detroit; one son, Rudy Riley of Kirksey Route 1; one sister, Eliza Elzenwaght of Indiana; one brother, Logan Riley of Mayfield Route 5; and four grandchildren.

He was a member of the New Hope Baptist Church, where the Rev. R. B. Cope will conduct funeral services Friday at 2 p.m. Burial will be in the Riley Cemetery by the Linn Funeral Home.

Courier Classifieds Pay

"Mrs. Windrip used to wonder where her hubby spent his evenings. Then she came home early one night—and there he was!"

PERSONALS

Mr. and Mrs. Horace Sledd and children visited the family of Mrs. Lola Cone Martin in Bardwell Sunday.

Mr. and Mrs. Ed Landon of Benton attended funeral services in Paducah Tuesday afternoon for Mrs. Betty McClure. She was an aunt of Mr. Landon.

Mr. and Mrs. George Thompson and daughter and Billy Bruce Morgan of Memphis, Mr. and Mrs. Howard Morgan and children of Metropolis, Ill., Ethan Castleberry, Mr. and Mrs. Gus Merlin Wyatt and children, and Mrs. Gussie Cahoon of Benton were Sunday dinner guests of Mr. and Mrs. Bruce Morgan.

Mr. and Mrs. Rob Earl Love of Guthrie, Ky., and their daughter, Mrs. Frank Davis and family of Calvert City, were visitors in Murray and Benton Tuesday.

Merlin Wyatt is on the sick list this week.

EASTERN STAR TO MEET

Benton Chapter No. 305, O.E.S. will convene Monday night, Oct. 18, at 7:30 o'clock. The occasion is a regular meeting, and will usher in the "New Year" of the 1954-55 season. The new officers for the year will preside.

Subscribe to The Courier

THINGS TO TALK ABOUT

BY FRANKLIN J. MEINE
Editor, American Peoples Encyclopedia



ROYAL ARCH TO MEET

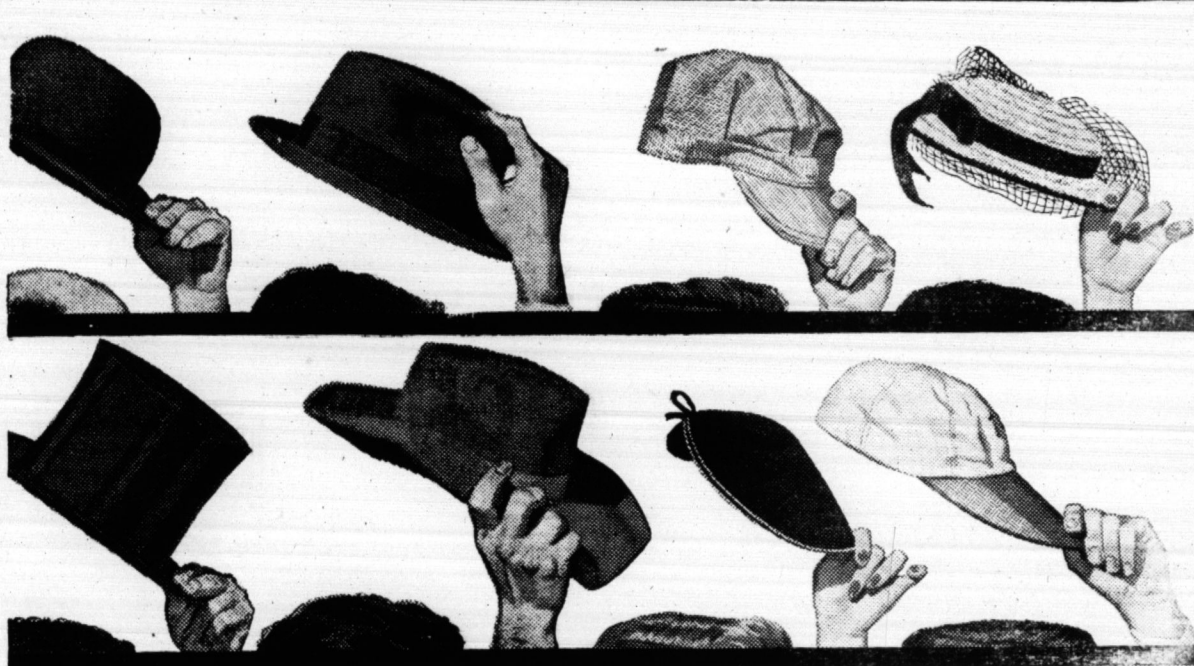
Royal Arch Masons will meet Friday night at 7:30 o'clock in the Benton Masonic Hall. Milburn Jones, secretary, invites all members to attend.

Among the patients from Marshall County at Murray Hospital last week were Mrs. R. C. Clark of Benton Route 5 and Arthur Kennedy of Gilbertsville Route 1.

COMMANDERY TO MEET

Benton Commandery No. 48 will meet Friday night, Oct. 15, at 7:30 p.m. at the Benton Masonic Hall. Sir Knight Brockenside of the Mayfield Commandery and instructor for this district will be present. Commander C. C. Miller urges all officers and Sir Knights to be present and bring their rituals.

Read the Best, The Courier



HATS OFF TO BENTON'S OILMAN

This week we are glad to join oilmen everywhere in observing Oil Progress Week. We think it's a good time to take our hats off to America's oilmen for their continuous, faithful service to all of us.

As part of a service-conscious, competitive industry, they are proving daily that your progress and Oil Progress go hand in hand. Today you can actually

measure that progress by improved gasolines that power your car, more efficient fuels for home heating and hundreds of other oil products that make living more comfortable every day.

We'd like to point out that by serving you and the nation so well, America's oilmen have actually made every week of the year Oil Progress Week.

Leneave's Service Station
Gulf Oil Products

Austin's Sinclair Station
Sinclair Oil Products

Chambers Aetna Station
Aetna Oil Products

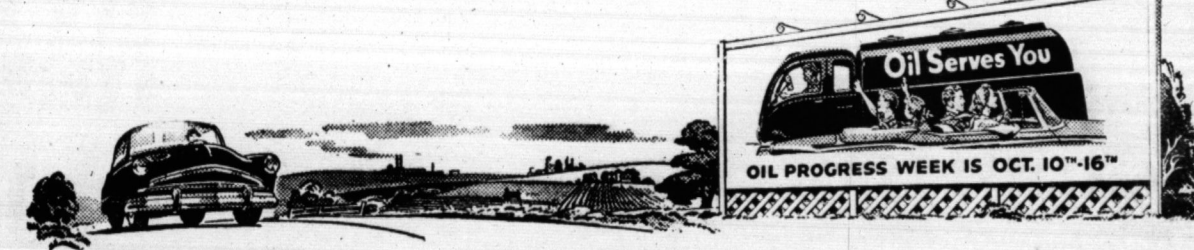
Ham & Larkin Ashland Station
Ashland Oil Products

Hugh McCrady Gulf Station
Gulf Oil Products

Holmes Shell Station
Shell Oil Products

Sledd's Texaco Station
Texaco Oil Products

Benton Standard Station
John Strow, Prop.



CALVERT CITY SEAMAN

Wilford O. Dismore, machinist's mate third class, USN, son of Mr. and Mrs. Owen E. Dismore of Route 1, Calvert City, is

serving aboard the attack aircraft carrier USS Intrepid. She is the first aircraft carrier in the Atlantic Fleet to be equipped with steam catapults.

These new steam catapults, one of the many improvements in design, enable the Intrepid to handle the Navy's latest jet fighters and bombers.

I play
SAFE



IT'S EASY, because I depend on my convenient, safe checking account for making all payments. My cancelled checks become reliable proof of payment and records which make my budget-keeping simpler to maintain.

Moreover, there is no longer need to carry large amounts of money when I go shopping. And there's no opportunity for loss through theft. Why don't you play safe, too? Open your checking account today. Use our new low cost protection!

BANK OF BENTON

Member F. D. I. C.

Want Ads

FOR SALE—Twin Maple Beds, new inner springs mattresses & springs. Will sell for the price of springs and mattress. Mrs. H. D. Dublin, 1st house on right from Gordon's Cafe on Highway 68, Benton Route 5. 24p

YOU GET MORE for your money when you buy a CROSLEY SUPER V Television at Sled's Appliance Store, Benton, Kentucky. 25p

FOR SALE—One girl's bicycle, 26 inch frame. Brand new. Will sell at a bargain. See Gilbert Elkins at U-Tote-Em Superette in Benton. 23p

YOU GET MORE for your money when you buy a CROSLEY SUPER V Television at Sled's Appliance Store, Benton, Kentucky. 25p

FOR SALE—Jap hay, 100 bales. See Victor Darnell, Route 4, Benton. 22p

FOR SALE—Oil heater with blower, 60,000 BTU capacity. \$75. Trevathan Furniture Sales, 2610 Bridge Street, Paducah, Ky. 25c

YOU GET MORE for your money when you buy a CROSLEY SUPER V Television at Sled's Appliance Store, Benton, Ky. 25c

YOU GET MORE for your money when you buy a CROSLEY SUPER V Television at Sled's Appliance Store, Benton, Ky. 25c

FOR SALE—5-room house and bath. Almost new. Located on big lot in Benton. Private water well. See Merlin Lamb at Briensburg or phone Benton 6360. 23p

FOR SALE—Spinnet pianos. Full keyboard. \$455. Harry Edwards, 808 South 5th Street, Paducah, Ky. 25c

WOMEN WANTED—Make extra money. Address, Mail postcards spare time every week. BICO, 143 Belmont, Belmont, Mass. 25p

FOR RENT—4 room house and bath at 906 West 10th Street in Benton. Ideal for couple. Inquire at 926 Pine Street or Phone Benton 7886. 25c

FOR RENT—3 room apartment. Close in. Also house. Mrs. J. D. Peterson, phone Benton 4511. 22c

PIANOS FOR SALE—6 good used ones in good tune. Only \$65 each. Harry Edwards, 808 South 5th Street, Paducah, Ky. 25c

WANTED—Good fireplace wood. See, call or write Marshall Wyatt at Benton, Ky. 25c

Yams What Am Are Grown in Garden By E. B. Aarant

E. B. Aarant of Benton Route 1 grows yams what am. Mr. Aarant harvested his sweet potatoes last week, and what a harvest it was! One of his taters was almost as big as a football and weighed 3 and 3-4ths pounds. From another hill, he dug 8 1-4 pounds of yams and they were all big uns. Mr. Aarant planted 1,000 hills in his garden. All of the hills, of course, didn't produce granddaddy taters but Mr. Aarant harvested enough to have plenty of sweet tater pie this winter.

Courier Classifieds Pay



"One thing about getting along in years—you feel your corns more than your oats!"



"Sometimes a clear conscience can be nothing more than a short memory."

My Neighbors



"I won't buy this one's milk. She's psychologically mal-adjusted, anti-social AND discontented!"

THE MARSHALL COURIER

Published Thurs. Of Each Week at 1103 Poplar St Benton, Ky. Entered as 2nd Class Matter May 30, 1937, at the Post Office at Benton, Ky. Under the Act of March 3, 1879.

Urey Woodson Cross and Marshall Wyatt - Publishers

Students at M

Continued from Page One

Route 1, Hardin; Marilyn M. Means, Route 1, Hardin; Dale Morgan, Route 1, Benton; Paul Norman Morgan, Route 5, Benton.

James Franklin Norwood, Hardin; Charles I. Pace, Hardin; Thomas Ervin Poe, Route 6, Benton; Donna M. Phillips, Benton; Donald E. Phillips, Benton; Howard B. Powell, Route 2, Calvert City; Victor Ray Powell, Route 2, Benton; James Warren Rayburn, Route 5, Benton; Beverly Ann Riley, Benton; Bobby G. Rudd, Hardin; Suzanne Seel, Calvert City; Terry Morris Sills, Route 1, Hardin; Charles H. Skaggs, Hardin.

Charles Ray Smith, Route 2, Calvert City; Donna Janet Smith, Benton; Gene Smith, Route 3, Benton; Joel Smith, Calvert City; Richard L. Smith, Route 5, Benton; Jim Solomon, Benton; Charles Wilson Stahl, Route 6, Benton; Charles P. Sumrall, Hardin; Charles B. Tarr, Gilbertsville; Jack W.

NELSON Rexall DRUG

YOU CAN DEPEND ON ANY DRUG PRODUCT THAT BEARS THE NAME

OCTOBER 13, 14, 15, 16 • Wed. thru Sat.

Rexall ORIGINAL 1c Sale

Advertised in LIFE • LOOK • POST • COLLIER'S • COUNTRY GENT

No Faster-Acting Aspirin Made
Rexall ASPIRIN
Full 5-grain tablets. Bottle of 100
2 for 55c REGULAR 54c

PLASTIC ADHESIVE TAPE Doesn't need a cutter. 1/2" x 5 yds. . . . REGULAR 24c

KLENZO NYLON TOOTH BRUSHES Choice of 4 medically approved styles . . . REGULAR 24c

CASCADE CHRISTMAS CARDS Box of 20 different cards plus envelopes . . . REGULAR 40c

HAIR BRUSH, Professional or Half-Round styles . . . REG. 1.00 **2 for 1.01**

KLENZO ANTISEPTIC, Pint . . . REG. 79c **2 for 80c**

MONACET COMPOUND APC TABLETS, 100's . . . REG. 79c **2 for 80c**

5X MULTI-VITAMINS, 50 tablets . . . REG. 6.95 **2 for 6.96**

"MAGIC RED" LIPSTICK, Indelo. . . . REG. 1.00 **2 for 1.01**

VICTORIA HOT WATER BOTTLE, 2-Heat Style. . . . REG. 2.89 **2 for 2.90**

NOT ON OUR 1c SALE PLAN... BUT SENSATIONAL VALUE MONEY-SAVERS

Nationally Famous **Spurtx NYLONS**
Finest quality. 51 gauge, 15 denier, coordinated lengths.
All Sizes **2 PAIRS 151c** FOR \$2.58 Value!

PEANUT BUTTER KITS . . . **2 for 45c**

Ammoniated TOOTH PASTE . . . **2 for 61c**

NAIL POLISH REMOVER . . . **2 for 40c**

LEAD FOIL ICICLES . . . **2 packs for 13c**

CASCADE FILLER PAPER . . . **2 for 79c**

MILK OF MAGNESIA TABS. . . . **2 for 29c**

TINY TOT BABY CREAM . . . **2 for 58c**

CUT GLASS TUMBLERS . . . **2 for 23c**

PURETEST MINERAL OIL . . . **2 for 86c**

Medford FACIAL TISSUES
Box of 300 sheets, white.
2 for 39c

Clifton FEVER THERMOMETERS
Oral or rectal types. 1.35 VALUE
ONLY 67c

Defender LATEX FOLDING SYRINGE
With carrying case.
NOW ONLY 1.35

YOU CAN DEPEND ON ANY DRUG PRODUCT THAT BEARS THE NAME

\$ \$ \$ SAVE

TERRIFIC BUYS IN NEW MATERIALS

Quality Fabric
WHITE STAR SHEETS
Size 81x99 — Type 128
ONLY 1.66
PILLOW CASES 42x36 49c

36" Heavy
FANCY OUTING . . . yd. 39c
36" Heavy
SOLID OUTING . . . yd. 35c
White, Pink, Blue, Maise and Mint

Ready-Made Draperies

50x90" size — Sunfast Block-Crafted Printed Dixie
Draperies. Made of 100 percent acetate.
Colors Green, Yellow, Red and Brown. . . . PAIR

\$2.98

LADIES FALL
LONG SLEEVE
PRINT
DRESSES
Sizes 9-15 — 14-20
\$1.98

36" BROWN
Heavy LL Quality
BROWN DOMESTIC
yd. 19c

Heavy 60"
FALL
SUITING
Guaranteed first quality. Cut from full widths. Good Ass. of Fall Colors.
98c yd.

NEW 80 SQUARE
PRINTS
Colorful florals, plaids, figures, dots, stripes.
36" Wide
39c yd.

NATIONAL STORES

ents at M
Page One
Marilyn M.
Hardin, Dale M.
Benton; Paul
Route 5, Ben-
Norwood, Har-
Pace, Hardin,
Route 6, Ben-
Phillips, Benton;
Benton; How-
Route 2, Calvert
Fowell, Route
Warren Ray-
Benton; Beverly
son; Bobby G.
Suzanne Seel,
ry Morris Sills,
Charles H.
with, Route 2,
Donna Janet
Gene Smith,
Joel Smith,
Jimi Solomon,
Wilson Stahl,
Charles B.
Jack W.
READ THE W
call DRUG
DUCT THAT BEARS THE NAME
16 • Wed. thru S
Sal
COLLIER'S • COUNTRY GENT
BUBBING ALCOHOL...Compound, Pint
OPPOSITORIES, Adults' or Infants' 12's
ND PAPER 50 sheets or envelopes...
S GIFT PAPERS, 2 large sheets per p
SHAVE CREAM, Brushless or Lather
COUGH SYRUP, 4 oz.
Choice of 4 medically approved
styles... REGULAR 35c
of 20 different cards
plus envelopes... REGULAR 40c
2 for 1.01
2 for 80c
2 for 80c
2 for 6.96
2 for 1.01
2 for 2.90
BUT SENSATIONAL VALUE
GREAT BONUS BUY
HANDMADE
WEAVE
WRITING
PAPER
in CABINET
NOW 98c
2-LB.
BOX
HOMEMAID
COLATES
ONLY 1.39
CHRISTMAS
TREE
LIGHT
SETS
U.L. APPROVED.
1.69
on FEVER
THERMOMETERS
or rectal types.
35 VALUE
67c
HAT BEARS THE NAME
Bell Telephone and Telegraph Company

Benton, The Best
• Town in Ky. •
By A Dam Site

The Marshall Courier

Western Kentucky's Largest Weekly Newspaper — Benton and Marshall County's Home Newspaper

Build Marshall
• County And It •
Will Build You

Volume XVIII Paid Circulation Sells — That Is The
Kind This Newspaper Offers Customers

Benton, Kentucky, October 14, 1964

First In Circulation, First In Advertising
First In The Home, First In Reader Interest Number 22

Briensburg Baptist Revival is Success; 17 Added to Rolls

By REV. T. L. CAMPBELL
Briensburg Baptist Church of Marshall County has experienced one of the greatest revivals in the history of the church. Rev. Harry L. Winters of Guthrie, Ky., did the preaching.

Large crowds attended every service and the Sunday School attendance for the mid-Sunday of the meeting (Sept. 26) was 235, and 231 on the Sunday following the close of the meeting.

There were 15 additions to the church by baptism and two by transfer.

Twelve of the baptisms were adults above 25 years of age. Ten of them were men 25 to 77 years of age. More than 500 people attended the baptismal service on Sunday evening, Oct. 3. The new baptistry, recently installed by the church, afforded a beautiful scene for the baptismal services.

The church and pastor are very grateful to God for this great revival.

Officers Chosen by Freshman Class of North Marshall Hi

By ROBERT MOBLEY
The freshman class of North Marshall High School met Oct. 5 and elected officers for the school year.

Linda Duncan was elected president of the class; Joe Nanney, vice president; Marie Powell, secretary; Judy Young, treasurer; Robert Mobley, reporter.

The sponsors are Mrs. Alpha Stice, Mr. Earl Walker, and Mr. Gordon Chester.

Pat Ely, pharmacy student in Louisville, spent the weekend in Benton with his parents, Mr. and Mrs. Joe Pete Ely.

Mrs. Carl Shemwell and daughter, Mrs. Reavis Sowell and children of Paducah, visited Mr. and Mrs. Clois Holmes and Mr. and Mrs. Clint Smith during the past week.

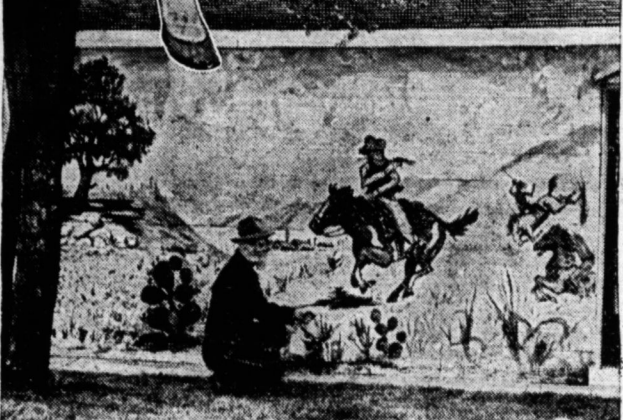
Frank Siris of Aurora, who recently underwent an operation for the removal of a kidney, has returned to his home. He visited in the home of Mr. and Mrs. Vinon Travis during the week-end.

Central States News Views

WELL STACKED are the cans in this new exercise for poise and posture. Eye-filling Ingeborg King performs feat to herald Midwest introduction of new, non-fattening Tapa Cola being produced in Milwaukee.



DEADPAN reaction of Rudy the Owl resists funniest jokes of brothers Gary and Robert Woodlin, of Salina, Kan., who found young bird on fishing trip and kept him for pet.



WILD WEST comes to Dearborn, Mich., on garage owned, by sign painter Bill Millington. Tired of the plain white garages in vicinity, Bill painted unusual mural on his.

William Lowery of Calvert City was a patient in the Riverside Hospital during the first week in October.

Richard Ford of Calvert City was a patient in the Riverside Hospital during the first week in October.

Benton Girl Scouts Hold Weiner Roast At Kentucky Dam

Benton Girl Scouts held a weiner roast last Thursday night at Kentucky Dam.

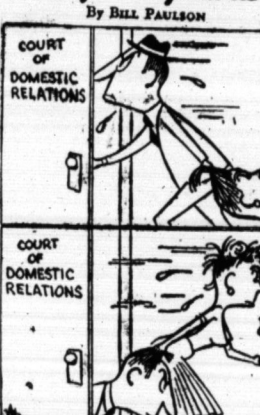
Twenty-eight Girl Scouts attended, and each girl brought one guest to make a total of 56. There also were several mothers present.

Among the mothers attending were Mesdames Ralph Vaughn, Grace Nelson, Leon Byers, Kate Landrum, Ed Landon, Dave Ferguson, Roy James, Ernest Ferguson, and James Goodman.

Benton has the largest Girl Scout organization in its history and the group is operating at a very high degree of effectiveness, Mrs. Goodman said.

Mrs. Estella Crowell of this county was a recent patient in the Baptist Hospital in Paducah.

My Neighbors



Mrs. O. F. Romine has returned to her home in Florence, Ala., after visiting the family of her son, Howard Romine, for two weeks.

Officers are Selected By Hardin 4-H Group

The Hardin 7th and 8th grades 4-H Club met on Oct. 4 at the school for its initial session.

Officers were elected as follows:

Joe Anderson, president; Kent Sutherland, vice president; Bonita Copeland, secretary-treasurer; Lovetta McQuithy, reporter; Jimmy Miller, song leader; Elwood Brown, games leader.

Others attending the meeting were Louise Birdsong, Jerry Hicks, Peggy Lnmn, Jerry Pennington, Myrna Rudd, Shirley Riley, Phillip Sheppard, Jud Turner, Ronnie Sheppard, Linda Sue West, and Wanda West.

Mr. Brinkley is the club instructor.

Mr. and Mrs. Herman Kanatzar were business visitors in Covington, Ky., last week.

Mr. and Mrs. Solon Henson of Route 4 were business visitors in Benton Monday.

ALL DEMOCRATIC WOMEN OF FIRST DISTRICT

Are Now Urged to Meet

AT 12:00 NOON ON OCTOBER 23

At Ky. Dam Village to Lunch

— Let's Hear and Meet —

The Women of the Democratic
Caravan Speaking

MRS. SUSAN POLLARD, National Democratic Chairman of Kentucky.

MISS PEARL RUNYON, State Treasurer of Kentucky.

MISS SUSAN RUTHERFORD, tate Democratic Chairman.

MR. WILSON WYATT and others.

Let's Hear the Facts

Go Back and and Elect Alben Barkley

U. S. Senator

We're out to make a Record
— and how can we miss with a hit like this ?



WE'RE shooting for the biggest October in Buick history and we're willing to go all out to make it.

Right now, Buick is outselling every other car in the nation—regardless of price class—except two of the so-called "low-priced three."

So you know that it has the combination of horsepower—room—comfort—performance—and styling too good to miss.

And it isn't hard for you to figure out that Buick dealers must be offering the kind of prices and trade-ins that the public goes for—because you can't make record sales these days unless you have everything it takes to make a winning combination.

Come in and see us, and you'll know what we mean.

Here's the big 3-Way Bonus
we offer in Buick today

1. **Advanced Styling**—the very look of tomorrow, with long, low glamor lines, sports-car snap, and that trend-setting panoramic windshield that most other cars won't have till 1955 or later.
2. **Better Buy**—a lot more automobile for your money—more room and power and ride comfort and solidity of structure—plus the higher resale value of a car that will still be fresh and new-looking well into the future.
3. **Top Allowance**—from the tremendous volume that has put Buick into the top 3 of the nation's best sellers. So you get the benefit of our soaring success in the form of a higher trade-in allowance on your present car. Come in and check!

\$2300⁰⁰ *
Only **BUICK V8 SPECIAL**
delivered locally

*2-door, 6-passenger SPECIAL Sedan, Model 480, illustrated. Optional equipment, accessories, state and local taxes, if any, additional. Prices may vary slightly in adjoining communities due to shipping charges. All prices subject to change without notice. Even the factory-installed extras you may want are bargains, such as heater & defroster... only \$81.70.

Buick Sales are Soaring
—so Buick 'deals' are bigger than ever right now!

LAMPKINS' BUICK COMPANY

1900 South Main

Benton, Ky.

farm facts FOR KENTUCKY FOLKS by Wm. C. Johnstone AGRICULTURAL REPRESENTATIVE KENTUCKY BANKERS ASSOCIATION



Laugh and the
World . . .

"I'm crazy about your daughter, McTavish, and if you'll let me marry her I'll pay you her weight in gold."
"Let me have a few days first."
"To think it over?"
"No, to fatten her up."
Baby sitter: "And after Goldilocks ate the porridge, she went upstairs and saw three beds."
Junior: "Jumplin' creepers! That porridge musta been splik-ed."

FORESTRY NEWS rates high in Kentucky in October. Three important developments affecting our timber areas have just been announced. They are the appropriation by Congress of funds for the establishment of a forest research center in Eastern Kentucky, the letting of a contract to construct a \$3 million wood-using chemical plant at Burnside, and plans for starting a tree farm program by the Kentucky Forest Industries committee.

The Research Center will be to forest owners what the Experiment Station has been to general farmers. It will investigate problems in production, management and utilization of our forest lands.

In Kentucky there are over 11 million acres of land in forest—almost half of the state's entire area. Much of our forests have been badly abused, and as a result are relatively unproductive, especially in respect to first quality timber.

Results of the work at the Center will be a guide to the future use of these vast acres.

The new plant at Burnside is just what is needed to improve forest lands of Kentucky. The plant will use mostly wood of little value for usual commercial purposes, such as slabs from sawmills, cull trees, limbs and other by-products of the lumbering industry.

The raw material will be chipped and ground and treated with chemicals to produce fuel—the basis of plastics and synthetic products, wood alcohol and charcoal. Charcoal is one of the best materials for curing tobacco so the new plant may be of special interest to our tobacco growers.

The Tree Farm program is described in the MARSHALL COURIER published Thurs. Of Each Week at 1103 Poplar St. Benton, Ky. Entered as 2nd Class Matter May 30, 1937, at the Post Office at Benton, Ky. Under The Act of March 3, 1879.

Urey Woodson Cross and Marshall Wyatt - Publishers
STATEMENT OF OWNERSHIP
MANAGEMENT, ETC.

Of the Marshall Courier, published weekly at Benton, Ky. Before me, Toad-Brien, County Court Clerk, appeared Marshall Wyatt, who deposes and says the following, to his belief and knowledge is a true statement of the ownership, circulation, etc., of the aforesaid weekly.

That the names and addresses of the publisher, editor and business manager are: Marshall Wyatt and Woodson Cross of Benton, Ky. That the owners are Marshall Wyatt and Woodson Cross of Benton, Ky.

That the known bondholders, mortgagees and other holders owning or holding one percent or more of the total amount of bonds, mortgages or other securities, are: NONE.

That the two paragraphs next above give all the names of the owners, stockholders and security holders or other persons holding other securities direct or indirect or other securities than as so stated by him.

That the average number of copies of each issue of this publication sold or distributed through the mails or otherwise paid subscribers during the 12 months preceding the date shown above is 2197.

Sworn and subscribed before me this Sept. 29, 1953. Toad-Brien, County Court Clerk.

Shaving Is Slicker —
Blade Changing Quicker
BUY Gillette
BLUE BLADES
IN HANDY DISPENSER
with
used-blade
compartment
20 for 98¢ 10 for 49¢

UNCORK 25 FEET
OF STOMACH TUBES
Feel half-alive, headachy, when stomach is clogged by constipation? Black-Draught brings wonderful relief when you feel lousy, suffer gassy digestive upset, from constipation. Helps sweeten your stomach at same time!
Black-Draught Sweetener Works Overnight! No harsh griping. Thoroughly but gently uncorks all 25 feet of clogged intestines. Uncomforting relief from constipation while you sleep. Helps sweeten your stomach too. Get Black-Draught today.
In Powder or Granulated form . . . and now in new, easy-to-take Tablets, too!
FOR CHILDREN: When constipation causes children's distress, get honey-sweet Syrup of Black-Draught.

NOTICE
THERE IS A
Singer Sewing Machine
Representative Now Living in Benton for
SALES, SERVICE, REPAIR
CONTACT
CARL ARVIN
103 West 7th Street Phone 7621

WHY NOT SHOP AT
Hank Bros
HARDWARE • PAINTS • WALLPAPER
312 Broadway — Paducah, Ky.
HARDWARE — HOUSEWARES — PAINT
Mail Orders Given Prompt Attention

HEADQUARTERS FOR . . .
Bicycles, Cushman Scooters, Mustang Motorcycles,
Whizzer Bike Motors
LAWN MOWERS SHARPENED AND REPAIRED
We Service What We Sell
RASCHE'S CYCLE SHOP
713 Kentucky Avenue Paducah, Ky.

LINN FUNERAL HOME
Where the Best in Funeral and Ambulance Service
Get So Little. Three ambulances available, two
equipped with Oxygen
AT YOUR SERVICE DAY OR NIGHT
Air conditioned for your comfort
Phone 881— Benton, Ky. —807 Main Street

MATTRESSES
Direct From Factory To You
SAVE 1-3 ON
• Mattresses
• Baby-Land
Furniture
• Juvenile Furniture
• Home or Motel
Bedroom Furniture
• Hollywood Frames
and Head Boards
1 DAY SERVICE to rebuild your old
Mattress or Box-Spring Like New
West Ky. Mattress Manufacturing Co.
1136 South Third Paducah, Ky. Dial 2-8040

GET
HOTPOINT
You Can Get
A Better Deal
At
ERWIN POE'S
In Palma
RADIO SERVICE CENTER
Benton, Ky.

MARSHALL COUNTY
Building and Construction Directory
WHERE
TO
DO IT
HOW
TO
DO IT

LET TO
BUILDERS
SUPPLIERS
DO THE
JOB FOR
YOU

Check Below For Your Supplies, Suppliers, And Builders

BE PROUD OF THE
HOME YOU BUILD
See NATIONAL'S Four Smart Lines
CADET - FACEMAKER - CUSTOM - RANGER
Variety of Plans and Designs
All Homes Eligible for FHA Loans
Low Down and Monthly Payments
CALVERT CONSTRUCTION CORPORATION
200 E. 14th St. Benton, Ky.

For the Best in
BUILDING
Commercial & Industrial
HAL PERRY GENERAL CONTRACTOR
Benton, Ky. Phone 5891

Wholesale Electric Supplies
TO WIRE ANY TYPE BUILDING
60 to 200 Amp. Panels in Stock
Distributors for Cavalier Electric and Floor Furnaces
Jackson Electric Water Heaters
Pittsburgh Paints
THOMAS MORGAN CO.
Benton

FOR SAFETY FIRST
IN
BUILDING MATERIAL
Use Our
Smooth Face Concrete Blocks
Easy to Paint — Look Good and ARE GOOD.
We have Concrete Road Tile in various sizes.
24" Well Tile and Tops. — Grease Traps and
Septic Tanks.
COME AND SEE US — YOU ARE ALWAYS
WELCOME AT
Kidd's Block & Tile Works
One Mile North of Benton on Paducah Road
PHONE 6395

For the Best
IN
REAL ESTATE
BE SURE TO CONTACT
DUCKETT & ARNOLD
Calvert City, Kentucky
• Homes • Farms • Industrial Sites

PLUMBING
Supplies
Contracting
See ALBERT HILL at
J. A. HILL Plumbing & Heating

NOW
is the
TIME
to
INSULATE
For Better Home Comfort
OWENS-CORNING FIBERGLAS
Call or Write Today
NO DOWN PAYMENTS—36 MONTHS TO PAY
Home Improvement Co.
Doyle Hutchinson, Owner
Ruberold Roofing and Siding
405 West Broadway Mayfield, Ky.

ELY ELECTRIC COMPANY
GLENN ELY
Reliable and Efficient Service
• House Wiring
• Wiring for Ranges
• Wiring for Water Heaters
• Wiring for Electric Heat
• Commercial and Industrial
Wiring
GOOD WIRING AT
REASONABLE PRICES
Ely Electric Co.
1102 Elm St. Phone 6134

If You Want a Job Done RIGHT
LET A SPECIALIST DO IT
R. R. McWATERS
Phone 4841 Benton, Ky.
• RESIDENTIAL and COMMERCIAL
GENERAL CONTRACTING

PLUMBING
SUPPLIES
For
HOME OR COMMERCIAL
We Are
PLUMBING & HEATING CONTRACTORS
2 Big Stores to Serve You
MILLER-JOHNSON COMPANY
CALVERT CITY, KY. BENTON, KY. BENTON

You
Are
Invited
To Open a Savings or Checking
Account With Us
2%
on Time Deposits
BANK OF MARSHALL COUNTY
MEMBER FDIC
BENTON KENTUCKY

Don't Look
Further
For Your
We Have
What You
Need for Every Job
• BUILDING MATERIALS FOR ALL
HOMES — GARAGES or COMMERCIAL
BUILDINGS
A COMPLETE LUMBER SUPPLY
CALVERT CITY LUMBER COMPANY
CALVERT CITY — PHONE 400

Director

LET TOP BUILDERS SUPPLIERS DO THE JOB FOR YOU

S, And Builders

Wholesale Electric Supplies
TO WIRE ANY TYPE BUILDING
60 to 200 Amp. Panels in Stock
Contributors for Cavalier Electric Motors
and Floor Furnaces
Jackson Electric Water Heaters
Pittsburgh Paints
THOMAS MORGAN CO.
Benton, Kentucky

PLUMBING and HEATING SUPPLIES
Contracting
See ALBERT HILL at

HILL Plumbing & Heating

You Want a Done RIGHT

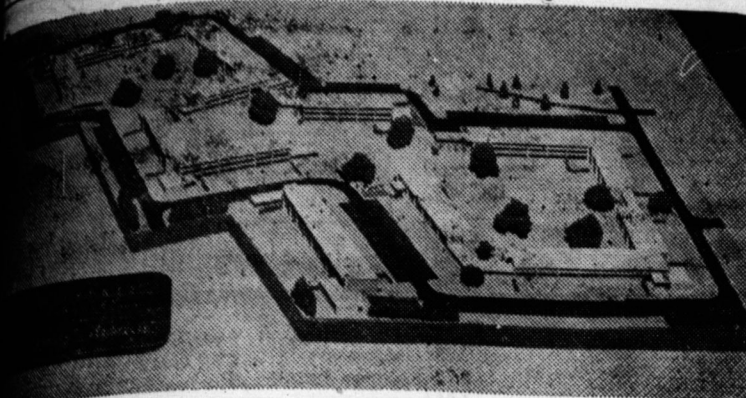
SPECIALIST DO IT

R. McWATERS
4841 Benton, Ky.
RESIDENTIAL and COMMERCIAL
GENERAL CONTRACTING

Look
er
our
ave
You

ed for Every Job
UILDING MATERIALS FOR ALL TYPES
OMES — GARAGES or COMMERCIAL
UILDINGS

A COMPLETE LUMBER SUPPLY
ALVERT CITY LUMBER
COMPANY
ALVERT CITY — PHONE 2400



OF UK MARRIED STUDENTS—More than 1,000 persons—married students and their families in modern apartment buildings to be constructed next year at the University of Kentucky. They will replace the pre-fabricated buildings of Cooperstown, village for veterans. The all-inclusive cost of \$2,500,000 will be borne by a bond issue which will be retired over a 30-year period.

ASK YOUR GROCER FOR JERSEY CREAM

Flour and Meal
Manufactured by
Mayfield Milling Company

GEORGETOWN COLLEGE GETS NEW PRESIDENT

Georgetown—Dr. H. Lee Eddleman was installed as the 19th president of Georgetown College at inauguration ceremonies held on the campus, Friday, Oct. 8, at 8 p.m.
Dr. James L. Sullivan, executive secretary and treasurer of the Southern Baptist Convention, was speaker. Dr. Eddleman delivered the inaugural address.

Be wise! Be thrifty!

WE'RE HEADQUARTERS FOR SEAT COVER VALUES!

Get your seat covers HERE... where beauty, quality, durability can't be beat! Smooth, tailored-to-fit lines! Handsome decorator patterns and colors! Sturdy construction stands up under constant family wear! Come in to your seat cover headquarters today and select the Arthur Fulmer seat covers of your choice... in the price range that fits your budget.

AUTO UPHOLSTERY SHOP
1148 Broadway Ruben Myers, Owner & Operator Paducah, Ky.

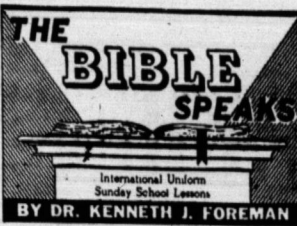
STANDARD OIL

CROWN EXTRA

NEEDS

STANDARD OIL COMPANY (KENTUCKY)

brings out the best in old cars and new



Way of Wisdom

Lesson for October 17, 1954

WHAT is the main thing to be desired in life? Different answers have been given and still are given. Some people think they would rather be rich than anything else; others count health freedom above all; others value things. There is a section of the Bible in which all the writers unite in giving an answer still different from any of these. "Wisdom is the principal thing," say they all, "therefore get wisdom." Dr. Foreman The book of Proverbs is part of what Bible scholars call the Wisdom Literature. It is unique among the books of the Bible. It does not tell a story, it has no plot, no argument. It consists of a large number of sayings or proverbs, put together for the most part with very little order. You can try the experiment some time of reading aloud any chapter in Proverbs from chapter 10 through chapter 29, backward (i.e. the last verse first, then the next-to-last, and so on to the first verse), and see whether your listeners know you are reading backward.

Knowledge and Wisdom
But while the book of Proverbs is not all arranged in orderly sequence, there is harmony all through it. The great theme is Wisdom. The whole race of man is divided here into three kinds of persons: the wise, the fools, and the young—who can choose wisdom now before it is too late. (No fool like an old fool!) Wisdom is by no means the same thing as knowledge. Almost anybody can acquire knowledge; all it takes is perseverance and a good memory. Knowledge can be gained quickly, as the rapid-instruction classes in the "army" have shown. A person can learn a language, well enough to get along with it, in a year's concentrated time. But when he speaks it, will what he says be wise? A man may know a dozen languages and yet talk no sense in any of them. A high school student can make "A" in agriculture in his examinations on the book, and still not be a good future farmer. Wisdom is founded on knowledge; the complete ignoramus can never be wise. But wisdom is more than knowledge; it is knowing what to do with knowledge, how to put it to work.

Wisdom Is From God
In the book of Proverbs wisdom is not only different from knowledge, it is different from what is sometimes called worldly wisdom. Men are sometimes called wise by unthinking persons when they are merely wise in the ways of the world—smart, shrewd, able to look out for themselves, always alighting on their feet, like cats. The wisdom commended in Proverbs is not worldly, it is divine. It differs from ordinary smartness in two ways. First, it is from God. It can be learned anywhere ("Go to the ant... consider her ways, and be wise") but God is the final source of wisdom. In other words, wisdom in these pages means much the same as what other writers call conforming to the will of God. It means looking at things with the eye and the mind of God. Further, as the writers of Proverbs see it, true wisdom includes God; that is to say, the wise man will remember God while the fool either never gives God a thought, or says in his heart, there is no God. He is the most important fact in the universe; to leave him out of all our calculations is to be a top-night fool.

Wisdom Is for This World
There have been good pious people who didn't know quite what to do with this book of Proverbs. For it is out of line with any other-worldly notion of religion. People who think that religion and common sense are two different things; people who think religion is concerned with things unseen while common sense deals with everyday facts; people who think that religion is chiefly concerned with death and what comes after—all these people are taken aback by the earthly simplicities of the Proverbs. The wisdom which is here admired and praised is not anything "out of this world." It is strictly for this world. A former governor of Virginia testified that during his term of office he had received more help in the practical problems of government from the book of Proverbs than from any of the books on political science which lined his library shelves.

(Based on outlines copyrighted by the Division of Christian Education, National Council of the Churches of the U. S. A. Released by Community Press Service.)

New Bangs Disease Laboratory Will be Built in Hopkinsville

Frankfort — The Kentucky Board of Agriculture has authorized the state veterinarian to establish a Bangs disease testing laboratory in Hopkinsville. This laboratory, which will be staffed with one or more full time veterinarians, will service the 40 or more counties in the Western Kentucky area. The laboratory will be located in the state office building now being erected in that city.

In announcing the creation of this laboratory, Agriculture Commissioner Ben S. Adams stated that it will improve upon the Bangs blood testing service now being provided the farmers in that area of the state. The practice prior to the opening of the Hopkinsville laboratory has been to ship all specimen samples to the state lab in Lexington for analysis.

Commissioner Adams added that the Board of Agriculture also plans to provide a laboratory in Western Kentucky for the diagnosis of animal diseases as soon as funds are available.

Laugh and the World

Luke was dead. A wonderful funeral was in progress. The preacher talked at length of the good traits of the deceased, what an honest man he was, what a loving husband and kind father. At length the widow whispered to one of her offspring, "Lem, go up there and take a look in that there coffin and see if that is your pa."

BLUE CROSS WILL HOLD LOUISVILLE CONFERENCE

Blue Cross and Blue Shield are holding their Fifth District Public Relations Enrollment Conference at the Kentucky Hotel, Louisville, Oct. 21 and 22 with 10 states represented. Speakers and special guests will include G. F. Liechty, Chicago; John Stearneman, Indianapolis; Raymond Mody and Lee Block of the National Blue Cross; Blue Shield Commissioners, Chicago; and J. E. Stanford, of the Kentucky Farm Bureau.

Jim Barnes of Route 3 was a business visitor in Benton Monday.

For several minutes the youngster had puzzled over an arithmetic problem and finally, in exasperation, he asked grandpa to work it out for him. "I could, my boy, but it wouldn't be right, now would it?" "Probably not. But take a shot at it anyway."

WATCH FOR
GRAND OPENING
INMAN'S D-X STATION
BENTON, KY.
OCT. 22nd & 23rd

PROTECT AMERICA'S STRENGTH AT HOME and ABROAD

Most atomic experts believe that, by 1955, the Russians will have as many atom and hydrogen bombs as we have. At that time, the advantage we have had over the Kremlin since 1946 will finally be lost, and each day thereafter will find us in a relatively worse position. Time is running out.

What has the Republican administration done during the past two years to protect our strength? The best description of its defense policy is "more bang for a buck"... Defense Department appropriations have been cut to the bone, vital services have been curtailed, research departments have been weakened or destroyed... and Defense officials have tried to lull the voters with talk about "massive retaliation."

And while America's defenses rust away, the administration has weakened our strength at home with attacks upon agriculture, public power, housing and our national resources. In fact, just about the only part of our economy that has been STRENGTHENED by the Republicans is General Motors!

In the first 18 months of the Eisenhower administration, contracts awarded General Motors increased by \$1.7



billion, while those contracts awarded to all other automobile producers decreased by \$395 million. (It will be remembered that Secretary of Defense Wilson was boss of General Motors before he joined the Eisenhower cabinet!)

Alben Barkley does not believe this is the way to make America strong. He believes in a strong defense backed by a healthy economy... complete research programs in all phases of modern warfare... adequate ground troops and sea power to back up both strategic and tactical air elements... and an adequate defense system against atomic attack.

America needs this program NOW... 1956 may be too late. Send Alben Barkley back to Washington to lead the fight for a stronger nation and a free world!

VOTE FOR ALBEN BARKLEY and the STRAIGHT DEMOCRATIC TICKET

Let's All Get to the Polls

THIS AD SPONSORED BY

MILLER-JOHNSON CO.

PLUMBING AND HEATING

CALVERT CITY

BENTON

FINANCIAL STATEMENT City of Benton, Kentucky July 1, 1953 to June 30, 1954

RECEIPTS	
July 1, 1953 — June 30, 1954	
OCCUPATIONAL LICENSE	8,614.16
AUTO LICENSE	2,995.70
CITY TAX	13,424.47
PARKING METER	9,056.47
STREET BLACKTOPPING	5,893.98
RENT	2,315.00
POLICE COURT COLLECTIONS	4,429.50
MISCELLANEOUS COLLECTIONS	230.11
FIRE INSURANCE TAX	5,554.54
FIRE RUNS	297.00

TOTAL	52,210.93
DISTRIBUTION OF FUNDS	
GENERAL FUND	46,359.39
FIRE FUND	5,851.54
TOTAL	52,210.93

CITY OF BENTON GENERAL FUND	
BALANCE JULY 1, 1953	6,553.39
RECEIPTS	46,359.39
TOTAL TO ACCOUNT FOR	52,912.78
PAYROLL	18,455.26
DISBURSEMENTS AS PER DETAIL	27,037.11
BALANCE JUNE 30, 1954	7,420.41

SALARIES	
July 1, 1953, June 30, 1954	
W. L. Prince	1502.68
H. A. Riley	1179.00
Neal Owens	1421.52
Joe Faughn	1185.90
Charles R. Carrell	2517.12
Bobby R. McCrady	2263.92
Joe Williams	1061.10
Alice K. Duke	1136.40
Edd Austin	380.40
R. D. West	471.60
Garland S. Darnall	398.91
Ottie E. Morris	847.66
Paul C. Noles	139.95
Virgle E. Freeman	34.64
Oscar Mullinax	42.83
Una Holt	42.83
E. L. Bolen	16.15
Guy Darnall	484.81
Ell Creason	118.19
Hawley V. Henson	1441.87
Floyd Jackson	911.40
Dale Leneave	294.00
Leonard R. Jones	49.00
Leland Glisson	37.24
Bert Stringer	21.56
H. O. McGregor	199.90
J. A. Rudd	189.80
Van Collie	41.16
Claud Holt	23.52
TOTAL	18,455.26

EXPENDITURES	
July 1, 1953 — June 30, 1954	
Name	Amount Paid
JULY, 1953	
City of Benton, Social Security Fund—	
Southern Bell Telephone and Telegraph Co., Service	156.45
Morgan, Trevathan & Gunn, Insurance	49.70
Fred B. Grant, Surveying	128.46
Magee-Hale Park-O-Meter Co., Keys	45.00
Treas Lumber Company, supplies	3.00
Phillips Chevrolet Co., Police Car Service	3.47
S. G. Adams, Street Signs	20.91
Heath Hardware & Furniture	157.50
Ohio Valley Supply Company, Street Light Material	4.52
Kinney Motor Co., Grader Repair	45.10
Mark Clayton, Recording Deed	89.18
Earl K. Snow & Co., Receipt Book	2.00
Holland Outdoor Sign Co., Sign Painting	4.51
Linn Wheel Alignment, Police Car	6.00
Harry L. Shapiro, Uniforms	1.50
Luther White, Grader Repair	31.95
Crawford-Ferguson Co., Hardware	29.38
Fanny Jones Restaurant, Meals for Jail	15.27
Ashland Service Station, Seal Beam Light	18.90
Benton Service Station, Gas Police Car	1.80
Leneave Service Station, Police Car, Dump Truck	53.73
Gulf Refining Company, Oil	105.93
Texaco Service Station, Gas	7.53
Middle West Roads Company, Street Material	20.56
Lyle Sign Company, Street Signs	48.20
Long Concrete Co., Material	22.40
Reed Crushed Stone Co., Street Material	18.76
Will Norsworthy, 6 loads gravel	1.50
The Marshall Courier, Printing	.90
Director of Internal Revenue, W. H. Tax (April, May, June)	189.50
Holland Furnace Company, Cleaning Furnace	278.40
Marshall County Health Department, Health Service	25.00
City Light & Water Co., Service	75.00
Tommy Tubbs, Mowing	214.49
	87.00
AUGUST, 1953	1061.57
A. V. Rose Service Station, Gas City Truck	26.21
Texaco Service Station, Gas and Tire	23.89
Pat Wilkins, work on race track	17.50
Phillips Chevrolet Co., police car service	9.07
Morgan, Trevathan & Gunn, bond renewals	27.50
Heath Hardware & Furniture, hardware	9.82
Kinney Motors, repair work	37.56
Southern Bell Telephone & Telegraph Co., service	21.55
Treas Lumber Co., material	34.48
Paducah Woodenware Co., broom	2.50
Leneave Service Station, gas and tires	215.96
Joe Williams, pen refills, material for signs	5.65
Benton Service Station, car wash	1.90
Hayes Freight Lines, freight	3.83
Charles Barrett, labor	33.60
Benton Realty	200.00
Phillips Service Station, repair work	2.66
City Light and Water Co., service	250.03
Ky. Dam Fox Hunters Association, dues	10.00
SEPTEMBER, 1953	933.31
Middle West Roads Co., Warcolite cold mix	113.10
W. S. Darley & Company, police badges	14.69
Gulf Oil Co., oil	14.36
Colonial Refining & Chemical Co., traffic paint	61.80

Lyle Sign Co., signs	10.13
Southern Bell Telephone and Telegraph Co., service	36.80
Morgan, Trevathan & Gunn, Insurance	53.58
Paducah Typewriter Co., cleaning typewriter	15.00
Luther English, bulldozer work	36.00
Pat Wilkins, labor	72.50
Reed Crushed Stone Co., street material	34.63
Holmes Service Station, gas	3.77
Leneave Service Station, gas and oil	81.61
Benton Service Station, car wash	1.50
Ashland Service Station, gas	2.94
Paducah Woodenware Co., janitor supplies	6.25
The Marshall Courier, printing	46.00
Bob Roberts Office Supplies, carbon	4.00
Treas Lumber Co., material	23.31
T. J. Walters Service Station, gas city truck	14.08
Joe Williams, covers for signs	2.23
The Tribune-Democrat, printing	147.72
Texaco Service Station, gas	51.65
Marshall County Health Dept. health service	125.00
City of Benton, Social Security Fund, Social Security	94.28
Tommy Tubbs, mowing	6.00
City Light & Water Co., service	248.42
Southeastern Truck Lines, freight	2.50
C. C. Edwards, street painting	30.00
TOTAL	1352.85

OCTOBER, 1953	
Treas Lumber Company, material	197.88
Middle West Roads Company, street material	23.38
Kinney Motor Co., repair work	3.00
Long Concrete Co., material	5.30
Phillips Chevrolet Co., repair work	62.93
Crawford-Ferguson Co., hardware	20.90
Southern Bell Telephone & Telegraph Co., service	25.45
Benton Service Station, car wash	1.50
Bob Sawyer Gulf Station, gas police car	80.77
A. V. Rose Service Station, gas	21.30
Leneave Service Station, gas and repair work	77.77
Joe Williams, box rent	1.10
Cole Coal Company, coal	63.44
Paducah Woodenware Co., Janitor supplies	7.25
City of Benton, Social Security Fund—	
Social Security (July, Aug. & Sept.)	152.41
Director of Internal Revenue, withholding tax—	
(July, August and Sept.)	310.20
J. P. Smith, express on parking meters	3.25
Southeastern Motor Truck Lines, freight	2.50
City Light & Water Co., service	364.87
Southeastern Motor Truck Lines, freight	2.50

NOVEMBER, 1953	
Holland Outdoor Sign Company, painting	9.50
Reed Crushed Stone Company, street material	6.69
Boyd Motor Co., repair work	17.87
Heath Hardware and Furniture, hardware	1.84
A. H. McClain, coal	43.25
Bailey Hardware & Furniture Co., hardware	1.50
Ashland Oil and Refining Co., gas and oil	35.18
Southern Bell Telephone and Telegraph Co., service	13.35
Morgan, Trevathan & Gunn, Insurance	55.44
Kinney Motors, repair work	24.84
Phillips Chevrolet Co., repair work	11.63
R. F. Starks, tile	7.00
A. V. Rose Service Station, gas police car	63.22
Texaco Service Station, gas	87.55
Paducah Woodenware Co., janitor supplies	8.35
Crawford-Ferguson Co., hardware	1.90
Middle West Roads Co., partial payment blacktopping	5,000.00
Bank of Marshall County, Insurance contract	120.01
Leneave Service Station, gas and repair work	42.53
Ell Ford, police duty	5.00
U. L. Copeland, refund poll tax 1950-51	2.00
City Light and Water Co., service	230.86

DECEMBER	
Jim Kinney, mayor salary	60.00
Milton Hawkins, councilman salary	60.00
Dale Leneave, councilman salary	60.00
John Sled, councilman salary	60.00
Macon Hutchens, councilman salary	60.00
Bill Butler, councilman salary	60.00
Morgan Hill, councilman salary	60.00
Middle West Roads Co., final payment blacktopping	4492.20
Chambers Service Station, gas and oil	80.02
Max Bohannon, 16 loads gravel	2.40
Morgan Dept. Store, fuses and light bulb	2.92
Cole Coal Co., coal	92.76
Lane Lumber Co., material	35.27
Benton Sports Center, bulbs	7.10
Leneave Service Station, gas, oil, grader repair	46.89
Long Concrete Co., material	8.55
Magee-Hale Park-O-Meter Co., meter repair	48.00
Treas Lumber Co., material	33.45
Ohio Valley Supply Co., street lamps	34.71
Benton Service Station, flat tire	1.00
Crawford-Ferguson Co., hardware	8.85
Phillips Chevrolet Co., repair work	10.71
Southern Bell Telephone and Telegraph Co., service	15.55
S. G. Adams Company, signs	62.90
Ashland Service Station, gas	4.02
Joe Williams, stamps	9.00
The Marshall Courier, Printing	140.30
Ashland Oil and Refining Co., oil	6.75
The Tribune-Democrat, printing	10.70
Miller Auto Parts, bolts	1.82
Fanny Jones, meals for jail	35.45
Eddie Green, fire fighter	38.00
Budde Egner fire fighter	80.00
Jim Solomon, fire fighter	34.00
Russell Larkin	10.00
Johnny Linn, fire fighter	78.00
Bill Edwards, fire fighter	10.00
Robert L. Putteet Jr., fire fighter	10.00
Joe Tom Halton, firefighter	84.00
Joe Walker, fire fighter	38.00
Paul Noles, fire fighter	40.00
City Park Board, appropriation	1400.00
J. P. Smith, express on meters	3.25
Billy Green, express on meters	28.00
City Light and Water Company, service	238.95
JANUARY, 1954	7703.60
Director of Internal Revenue, withholding tax—	
(October, November & December)	338.40
City of Benton, Social Security Fund—	
Social Security (October, November & December)	132.70
Benton Service Station, kerosene	.90
Greer Neon Company, transformer	30.00
Southern Bell Telephone and Telegraph Co., service	15.50
Henry A. Pettey Supply Co., street lamps	84.21
Middle West Roads Company, Warcolite Cold Mix	107.45
Treas Lumber Company, material	212.77
S. G. Adams, car stickers	102.79
Joe Williams, box rent and stamps	4.10

Phillips Chevrolet Co., repair work	21.85
Holmes Service Station, tires, oil and gas	90.57
Leneave Service Station, tires, oil and gas	115.43
Marshall County Health Department, health service	125.00
City Light and Water Co., service	361.56
Eldridge Darnall, refunds city tax	11.25
Kinney Motors, repair work	9.76
TOTAL DISBURSEMENTS	1057.50
Balance June 30, 1954	1057.50
FEBRUARY	
Morgan, Trevathan & Gunn, bond renewals	65.00
Westinghouse Electric Supply Co., street lamps	46.30
So. Bell Tel. & Telegraph Co., Service	17.65
Magee-Hale Park-O-Meter Co., 6 meters repaired	40.50
Phillips Service Station, gas	21.52
Colonial Refining & Chemical Co., paint	156.65
Joe Williams, stamps, pen refill	3.99
Brown & English, coal	95.04
Kinney Tractor & Appliance Co., repair water fountain	7.90
J. T. Hooper, gas	1.58
Phillips Chevrolet Co., repair work	3.20
Max Bohannon, 31 loads of gravel	4.65
Henson Service Station, gas, oil Police car	103.81
Leneave Service Station, tires, tubes	103.84
Powell Service Station, fan belt	2.35
Mark Clayton, recording deed	2.00
Paducah Woodenware Co., janitor supplies	11.05
Charles R. Carrell, uniform	25.00
Bobby R. McCrady, uniform	25.00
Joe Faughn, uniform	50.00
Hayes Freight Lines, freight on paint	6.93
United Grocery Company, refund license	15.50
City Light and Water Co., service	248.25

MARCH	
Morgan, Trevathan & Gunn, bond renewals	30.00
Paducah Woodenware Co., supplies	18.60
Western Auto Store, floor mat	2.59
H. A. Lassiter, coal	10.50
So. Bell Tel. & Telgh. Co., service	12.25
R. F. Starks, tile	49.50
W. J. Brien, Jr., recording deed	2.00
McCrady Service Station, gas	1.57
Crawford - Ferguson, hardware	10.70
Hawkins Jewelry Store, meter repair	5.00
Luther English, bulldozer work	65.00
Holmes Service Station, gas	7.75
Leneave Service Station, gas	13.78
Phillips Chevrolet Co., repair work	41.66
Phillips Service Station, tires and tubes	66.33
Texaco Service Station, tires and tubes	356.33
Linn Wheel Alignment, police car	19.97
Max Bohannon, 19 loads gravel	2.85
Solomon-McCallum, bond	9.25
Joe Williams, pen refills	.98
Rohde-Spencer Co., filing cabinet	61.50
City Light & Water Co., service	203.13
Kinney Motors, 1954 Ford	716.00

APRIL	
Director of Internal Revenue, W. H. Tax (Jan., Feb., and March)	352.50
City of Benton Social Security Fund, Social Security tax for Jan., Feb., & March	200.52
Hawkins Jewelry Store, meter repair	4.00
Magee-Hale Park-O-Meter Co., keys and locks	15.00
Max Bohannon, 16 loads of gravel	2.40
Peel & Holland, Insurance	427.64
Dr. G. C. McClain, jail call	3.00
Crawford-Ferguson, hardware	19.55
So. Bell Tel. & Telgh. Co., service	21.90
Solomon-McCallum, bond	9.25
Eark K. Snow & Co., 500 Warrants	44.59
Western Auto Store, Supplies	5.75
The Tribune-Democrat, printing	13.65
Morgan, Trevathan & Gunn, bond	5.00
George Lyles Concrete Works, tile	185.85
Joe Williams, stamps, telegrams, cards	9.25
The Marshall Courier, printing	71.80
Holmes Service Station, gas	4.75
Leneave Service Station, tube, tire	24.60
Benton Service Station, gas, oil	122.20
Marshall County Health Dept., health service	75.00
J. P. Smith, freight on filing cabinet	5.24
City Light & ater Co., service	230.37

MAY	
Leneave Service Station, gas, oil	1111.66
J. I. Holcomb Mfg. Co., wax and cleaner	33.50
Max Bohannon, 14 loads of gravel	2.10
Middle West Roads Co., warcolite cold mix	32.69
Phillips Chevrolet Co., wrecker service	2.50
Heath Hardware & Furniture, bulbs	.98
So. Bell Tel. & Telgh. Co., service	14.00
Cleet Phillips, gravel for bridge	136.80
R. F. Starks Tile Works, tile	12.00
Hooper Service Station, gas	3.05
Long Concrete Co., bridge material	121.50
Peel & Holland, Insurance	115.84
Morgan, Trevathan & Gunn, Ins. & Bond renewals	172.20
James Budde Egner, 7 1-2 hrs. labor	5.25
R. A. Ham, 10 1-2 hrs. labor	7.88
Leland Glisson, 10 1-2 hrs. labor	7.88
Milburn Jones, labor	2.25
Harold Ross, 7 hrs.	5.25
Bill Rayburn, 5 hrs.	3.75
City Light & Water Co., service	225.91

JUNE	
R. F. Starks Tile Works, tile	1016.99
Max Bohannon, 8 loads of gravel	18.00
Leneave Service Station, repair work	1.20
So. Bell Tel. & Telgh. Co., service	4.50
Middle West Roads Co., warcolite cold mix	14.05
The Marshall Courier, printing	31.15
Joe Williams, stamps, cards	39.00
Peel & Holland, bond	4.00
Morgan, Trevathan & Gunn, Insurance	5.00
Texaco Service Station, gas, oil Police car	71.25
George Lyles Concrete Works, tile	117.14
The Tribune Democrat, printing	32.50
City Light & Water Company, service	223.56

GRAND TOTAL	\$27,037.11
Outstanding Checks -- M. G. Aldridge	91.25
Geo. Lyles Concrete Co.	32.50
CITY OF BENTON SOCIAL SECURITY REVOLVING FUND	
BALANCE JULY 1, 1953	744.02
FROM WATER WORKS	368.57
FROM CITY OF BENTON	736.36
TOTAL ACCOUNT FOR	1848.95

The Marshall Courier, Benton, Kentucky, June 30, 1954

	JULY 7, 1953 State Treasurer S. S. Taylor	
90.57	SEPT. 10, 1953 State Treasurer S. S. Taylor	
115.43	OCT. 7, 1953, State Treasurer S. S. Taylor	
125.00	JAN. 5, 1954, State Treasurer S. S. Taylor	
261.56	APRIL 2, 1954, State Treasurer, S. S. Taylor	
11.25		
9.76		
	TOTAL DISBURSEMENTS	
	Balance June 30, 1954	
		FIRE FUND
46.00	Balance July 1, 1953	
17.65	Receipts	
40.50		
21.52	Total Account for	
156.55	Disbursements as per detail	
3.59	Balance June 30, 1954	
95.04		
7.90		
1.58	Outstanding June 30, 1954	
3.20	Note on Fire Truck	
4.65		
103.81		EXPENDITURES FIRE FUND
103.84	JULY, 1953	July 1, 1953 — June 30, 1954
2.35	Month	Item
2.00	Leneave Service Station, Fire Truck Service	
11.05	Johnny Ray Linn, Expense Fire School	
25.00		
25.00		
50.00	AUGUST, 1953	
6.93	Leneave Service Station, Fire Truck Service	
15.50		
248.25		
	SEPTEMBER, 1953	
1057.50	Leneave Service Station, Fire Truck Service	
30.00	OCTOBER, 1953	
18.60		
2.59	Morgan, Trevathan & Gunn, Insurance	
10.50	Leneave Service Station, Fire Truck Service	
12.25	Bank of Marshall County, Interest on Note	
49.50		
2.00		
1.57	NOVEMBER, 1953	
10.70	Leneave Service Station, Fire Truck Service	
5.00	Peel & Holland, Insurance	
65.00	General Fire Extinguisher Service, Supplies	
7.75		
13.78		
41.66	DECEMBER, 1953	
66.33	Peel & Holland, Insurance	
356.33	Leneave Service Station, Fire Truck Service	
19.97	Dale Leneave, Fire Chief Salary	
2.85	Robert Leneave, Fire Fighter	
9.25	Joe Carl Wyatt, Fire Fighter	
.98	Milton Hawkins, Fire Fighter	
61.50	Johnny Wyatt, Fire Fighter	
203.13	Van Wyatt, Fire Fighter	
716.00	Ell Ford, Fire Fighter	
	Alvin Austin, Fire Fighter	
1707.24	James Thompson, Fire Fighter	
	Billy Green, Fire Fighter	
352.50	Sam H. Myers, Fire Fighter	
300.52	FEBRUARY, 1954	
4.00	Leneave Service Station, Fire Truck Service	
15.00	Ky. Fireman Association, Annual Dues	
2.40	Fire Engineering, Subscription	
427.64	General Fire Extinguisher, Supplies	
3.00	Henry A. Petter Supply Co. Fire Hose	
19.55		
21.90		
9.25	MARCH, 1954	
44.59	Name	Item
5.75	Leneave Service Station, Fire Truck Service	
13.65	Bank of Marshall County, Payment on Note	
5.00		
185.85		
9.25	APRIL, 1954	
71.50	Bank of Marshall County, Interest on Note	
4.75	Leneave Service Station, Fire Truck Service	
24.60		
122.20		
75.00	MAY, 1954	
5.24	Leneave Service Station, Fire Truck Service	
230.37	Kinney Motors, Fire Truck Service	
	Peel & Holland, Insurance	
1854.11		
1111.66		
33.50		
2.10	I, Joe Williams, Treasurer of the City of	Grand
32.69	July, Kentucky, do certify that the foregoing	day of
2.50	for the fiscal year July 1, 1953, to June 30,	
.98	best of my knowledge and belief.	
14.00	Given under my hand this _____ day	Joe Williams
136.80		
12.00	STATE OF KENTUCKY	
3.05	SCOT:	
121.50	COUNTY OF MARSHALL	
115.84	I, Clois Holmes, Notary Public of Marshall	
172.20	do certify that the foregoing Financial Stat	
5.25	edged before me in due form of law by Joe	
7.83	day of October, 1954.	
7.88	Given under my hand this the 4th day of	
2.25	Clois Holmes, Notary Public	
(SEAL)		
5.25	My commission expires March 27, 1956.	
3.75		
225.91		
1016.99		
18.00	Local News of Our	
1.20	Lee Coursey of Calvert City	Mr. and
4.50	Route 2 was in town Saturday	of Benton
14.05	business.	ping visit
31.15	Mrs. B. W. (Vernie) Brown has	day of
39.00	been confined to her home by	Mr. and
4.00	illness.	Route 1
5.00	Mr. and Mrs. H. B. Holland	town last
71.25	will go to Indianapolis, Ind.,	have movi
117.14	next weekend to visit their daugh	erly vacat
32.50	ter and family, Mrs. French	wife.
17.15	Elrod.	Mr. and
223.56	Route 5 and Mrs. Orb Malone of	Benton
578.50	will be among the county	daughter
	visitors in Benton Saturday.	ray Hosp
91.25	Mrs. K. E. Tyree, Mrs. Oma	Mr. and
32.50	Box and E. A. Box of Paducah	Route 7
	visited in the home of Mrs. A. A.	Mr. and
	Cross Saturday night.	Route 6
	Mr. and Mrs. Jay Miller spent	Saturday
	the weekend in Murray with	Mr. and
	their parents.	Route 1
744.02	Homer Lucas, who is employed	Mr. and
368.57	in Detroit, was in Benton dur	family of
736.36	ing the past week to get his	choppe
242.28	wife and son. They have return	

PIANOS



INGROWN NAIL HURTING YOU?

**Immediate
Relief!**

A few drops of OUTGRO® bring blessed relief from tormenting pain of ingrown nail. OUTGRO toughens the skin underneath the nail, allows the nail to be cut and thus prevents further pain and discomfort. OUTGRO is available at all drug stores.

ACHING MUSCLES

Relieve pains of tired, sore, aching muscles with STANBACK, tablets or powders. STANBACK acts fast to bring comforting relief... because the STANBACK formula combines several prescription type ingredients for fast relief of pain.

**Modern, Stylish, Durable Furniture At Reasonable
Prices. Then See Our Line.**

LOCHRIDGE & RIDGWAY

LOCHRIDGE & RIDGWAY

Mayfield	Kentucky
-----------------	-----------------

Wilson's Book Store

Office Furniture Books - Music
Office Supplies Fountain Pens
Duplicators Greeting Cards
306 Broadway Paducah, Ky.

FRIEDLANDER

JEWELRY & LOAN
208 Broadway — Paducah, Ky.
SAVE ON GUNS — TOOLS — LUGGAGE — JEWELRY
If You Have Money and Need Jewelry
SEE US
If You Need Money and Have Jewelry
SEE US

TREAS LUMBER
COMPANY

Lumber, Millwork, Doors, Paint, Builders' Hardware

"FROM FOUNDATION" TO ROOF—

1313 Poplar Phone 2301 Benton, Ky.

Stop At
TADES PACKAGE STORE

- Your Business Appreciated -
2600 Bridge St. Paducah, Ky.

INSURANCE OF ALL KINDS
Morgan. Trevathan and Gunn
Insurance Agency

INSURE NOW — TOMORROW MAY BE TOO LATE

PHONE 2151 BENTON, KY

CONTINENTAL 1108½ Main St.
Benton, Ky.

NEED MONEY? FINANCE

See Us.

Phone 4521

EXPERIENCE

Long practical experience, prompt and efficient service, sufficient merchandise to allow any family a selection according to their own wishes.

FILBECK - CANN
FUNERAL HOME

Ambulance Service, Oxygen Available
Phone 4681 or 2091, Benton, Ky.

PEEL'S

JEWELRY — LOANS
FINE JEWELRY — LUGGAGE — LOANS
 on anything of value
 — OUR NEW LOCATION —
 209 B'Way — Paducah, Ky.

**CONFIDE IN YOUR
DOCTOR!
HAVE Confidence
IN US!**

Your doctor knows best what to do in case of illness. We know best how to accurately fill his prescriptions. Our skilled pharmacists are always at your service.

LIST DRUG STORE

Septic Tanks

500 Gallon Capacity
REINFORCED — CONCRETE — PRECAST
 As required by Ky. State Dept. of Health
DELIVERED and LOWERED
 4" Concrete Drain Tile for Filtration Field
APPROVED

BUILD WITH

Genuine—

PETEY AND HIS PALS by J. MAXWELL

TUBBY, I AIN'T AFRAID O' GHOSTS, LIONS, TIGERS OR EVEN HAUNTED HOUSES!

HEY? YOU DON'T
'SPECT ME TO
BELIEVE **ALL**
THAT... DO YA?

WELL.. YOU CAN
BELIEVE **HALF**
OF IT.. CAN'T YA?

THE GARR FAMILY by ROD ROCHE

OH, GARR, WAKE UP!

I CAN JUST FEEL
THERE'S A **MOUSE**
IN THIS
ROOM

WELL, JUST FEEL THERE'S
A **CAT**, TOO, AND GO TO
SLEEP!

LITTLE JULIUS SNEEZER

WHEN YOU SEEN MY WIFE TO-DAY, WHY DIDN'T YOU HELP HER, ACROSS THE STREET?

SHE MIGHT OF GAVE YOU A MCKEL!

GEE I NEVER, THOUGHT OF THAT!

DID SHE SAY ANYTHING TO YOU?

WELL, SHE ASKED ME IF I COULD SEE HER ACROSS THE STREET!

GEE WHIZ- YA COULD SEE HER FOR A MILE!

Baker

State Mails Forms For Declaration of Estimated Income

Frankfort—Forms for filing declaration of estimated Kentucky income tax are being mailed to 200,000 Kentuckians from the Department of Revenue in Frankfort, Commissioner Robert H. Alphin announced today.

The new state income tax law requires self-employed persons to file declarations of estimated income and pay the tax during the year in which the income is earned. Most salaried individuals will have tax withheld by their employers and should not file declarations.

However, a declaration of estimated tax must be filed by every individual who expects to receive total gross income of at least \$1500 during 1954 of which more than \$1000 is income from which no tax has been withheld. The declaration must be filed by November 15, and one-half of the estimated tax paid at that time. The remaining one-half is to be paid when a final return is filed on or before April 15, 1955.

Persons who do not receive a form by mail but are required to file, may obtain forms at Kentucky Department of Revenue district offices located in Ashland, Covington, Lexington, Louisville, and Paducah and at banks, county tax commissioners' and county farm agents' offices.

PERSONALS

P. W. Washburn of Route 4 was a business visitor in Benton Saturday.

Mrs. Levi Nimmo underwent major surgery at the Murray Hospital Monday.

Mrs. Floyd Sorrells and son and daughter of Benton left Wednesday for New York. From there they will go Kaiser Sluatern, Germany, where Mr. Sorrells is stationed. Mr. Sorrells has been in the service for several years.

Mrs. Fanny Rudd has gone to Detroit to spend several weeks in the home of her son, Dan Rudd.

Mrs. Annie Norvell of Benton Route 6 was a visitor in Benton Monday.

Mr. and Mrs. A. W. Trimble left Tuesday for their home in Daytona Beach, Fla. They have been visiting their parents, Mr. and Mrs. Lloyd Crouch and W. E. Trimble.

Ed Hayden of Los Angeles, Calif., is visiting in the home of his brother, Max Hayden. Mr. Hayden has been in California for many years.

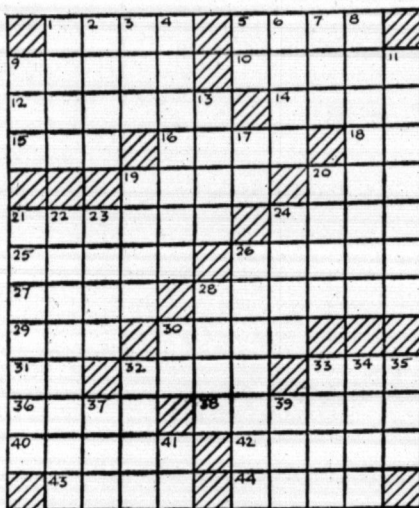
Mr. and Mrs. Bill Platt have moved to the house recently vacated by the A. T. Barnetts on Poplar Street.

Read the Best, The Courier

CROSSWORD PUZZLE

LAST WEEK'S
ANSWER

ACROSS
1. Attractive
5. "The
9. Nobleman
10. Philippine
12. Celestial
14. Press down
15. To the
16. Troubles
18. Italian river
19. Large constellation
20. For
21. Slander
24. Appendage
25. Shun
26. American
27. Flat-topped
28. Having a
29. A food
30. Crew
31. Part of
32. Not firm
33. Any
34. Fruit
36. Unrestrained
38. Lunch
40. Native
42. Mountain
43. Roman
44. Aromatic
45. Opera
46. Verdi
47. Section
48. Record
49. Of one's
50. Life and
51. Experience
52. Digit
53. Make
54. Abhorrence
55. Final
56. An
57. Dyad
58. (var.)
59. Finish
60. To be
61. In debt
62. Friar's
63. Title
64. International
65. Language

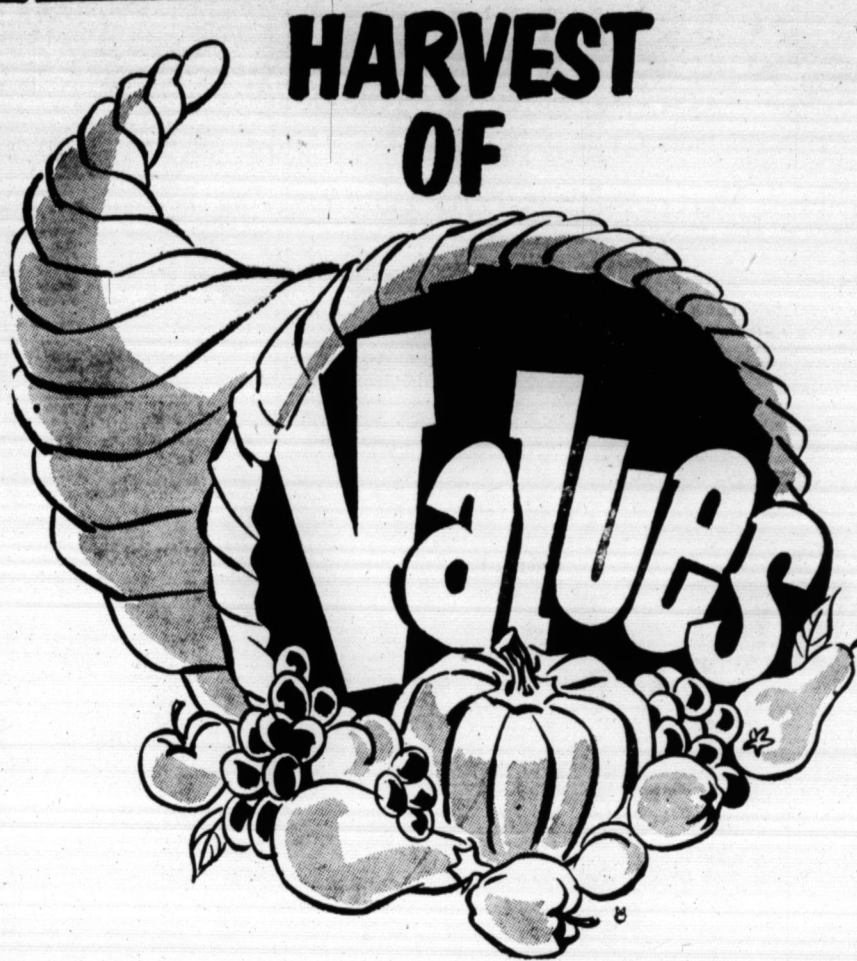


WE SAFEGUARD YOUR HEALTH

PRESCRIPTION DEL

Your physician knows best how to protect your health, his prescriptions reflect years of study and experience. You can always count on us to compound them with meticulous precision... using only the finest pharmaceuticals.

**NELSON'S
REXALL DRUG STORE**



Men's Jeans SHIRTS Tan-Gray—Two Large Button Down Flap Pockets—Sizes 14 to 20 \$1.98	Mens Duckhead OVERALLS 8-oz. Sanforized, Apron Back \$3.49
Men's Blue Denim WORK PANTS Wide Belt Loops and Cuffs \$2.69 or 2 for \$5.00	Men's 8-oz. Twill PANTS Rugged, Sanforized Work Pants with Wide Loops and Cuffs—Silver Gray and Army Tan — Size 29-50 \$3.00 — 2 for \$5.00 Matching Shirt . . . \$2.49 Short, Medium and Long Lengths
Men's Corduroy WORK PANTS \$5.95	Men's Type I Reeves Army Twill WORK PANTS Zipper Fly, Graduated Sizes \$4.95 or 2 for \$9.00 Shirts to Match \$4.95 or 2 for \$9.00
Men's Moleskin WORK PANTS \$3.95	Men's Overall JUMPERS Lined or Unlined \$3.95
Men's Fruit-of-the-Loom WORK PANTS Sanforized Top Quality Fabric and Construction—Slate Gray and Spruce Green Sizes 28 to 42 \$3.95 or 2 for \$7.00 Matching Shirts \$2.95 Short, Medium and Long Lengths	Mens Red Camel DUNGAREES Triple Stitched, 8-oz. Sanforized Reg. \$2.29 value Now \$1.98 Men's Belk 8-Ounce Jack Rabbit Overalls Sanforized Deep Tone Denim High and Low Back—Size 30-44 \$2.59

EVERY ITEM PRICED LOW DURING OUR GIGANTIC OCTOBER HARVEST

**WORK
CLOTHES**
That
Do The
Job



Boys Flannel Lined
BLUE JEANS
\$2.49

Men's Cotton
WORK SOX
White and Colored
25¢

Men's Striped
Carpenter
OVERALLS
Double Knee Construction
Heavy Nail Apron
Duckhead . . . **\$4.95**
Osh Kosh . . . **\$5.49**

Men's Cotton
SHIRTS
\$1.98 to \$2.49

Boys' Broad
PAJAMA
In Solid Colors
\$1.98

Boys
DRESS PANTS
New Fall Materials and Colors
Sizes 4-18
\$2.95 to \$7.95

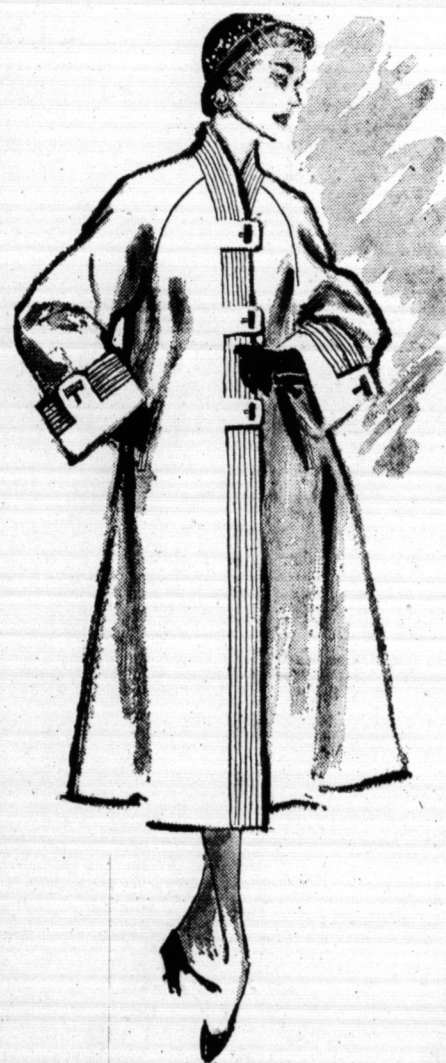
Boys Argyle and Plaid
SOCKS
100% Nylon Body, Sizes 8 to 11
Special 49¢

Boys
SWEATERS
50% Nylon, 50% Lanolin
Washable — Ass. Colors
\$4.95

Boys 8-oz. Red Camel
DUNGAREES
Sanforized — Sizes 4-18
\$1.69

HARVEST VALUES GALORE FOR THAT BOY IN YOUR FAMILY

Boys POPLIN JACKETS Sizes 4-10 Sizes 12-20 \$2.95 — \$3.95	Boys PLASTIC RAINCOATS Small - Medium - Large \$1.00	Boys CORDUROY PANTS \$3.95 to \$6.95
Boys GABARDINE JACKETS Assorted Colors and Styles \$4.95 to \$9.95	Boys Casey Jones WESTERN JEANS 8-ounce Sanforized, Zipper Fly \$1.69	Boys Blood Hound DUNGAREES 8-oz., Ipper Fly, Sanforized \$1.39 — 3 pr. for \$4.00
Suede and Leather JACKETS Blue - Green - Rust Sizes 8-18 \$16.50	Boys SPORT COATS Wool, Checks, Solids and Plaids Sizes 4-20 \$10.95 to \$16.50	Boys STADIUM COATS Blue, Reversible to Gold Plaid Gripper Fasteners \$8.95
Boys Long Sleeve SPORT SHIRTS Gabardine, Broadcloth, Gingham Sizes 6-18 \$1.98 to \$2.95	Boys Fruit-of-the-Loom SPORT SHIRTS Fancy—2 Flap Pockets Spread Colors \$1.98	Boys FLANNEL SHIRTS Vat-Dyed — Sanforized \$1.98
Boys WRANGLER JACKETS Western Style \$2.49	Boys PLAID JACKETS Lined — Dan River Fabric in Blue, Red Plaid — Sizes 6 to 18 \$3.95	Boys Wrangler 11-oz. WESTERN JEANS Sanforized - Zipper Fly - Sizes 4-18 \$2.49



Marce'
ORIGINAL
FROSTY BEIGE
\$49.95

The Brooks Shoppe

119 West Broadway

Mayfield, Ky.

It Pays to Shop at
Belk-Settle
Home of Better Value
Murray, Kentucky
ALL ITEMS ON THIS PAGE
BASEMENT FLOOR