



**MURRAY STATE**  
UNIVERSITY

**Murray State's Digital Commons**

---

Fulton Daily Leader

Newspapers

---

10-16-1941

## Fulton Daily Leader, October 16, 1941

Fulton Daily Leader

Follow this and additional works at: <https://digitalcommons.murraystate.edu/fdl>

---

### Recommended Citation

Fulton Daily Leader, "Fulton Daily Leader, October 16, 1941" (1941). *Fulton Daily Leader*. 314.  
<https://digitalcommons.murraystate.edu/fdl/314>

This Newspaper is brought to you for free and open access by the Newspapers at Murray State's Digital Commons. It has been accepted for inclusion in Fulton Daily Leader by an authorized administrator of Murray State's Digital Commons. For more information, please contact [msu.digitalcommons@murraystate.edu](mailto:msu.digitalcommons@murraystate.edu).

Souvenir  
Edition

# FULTON DAILY LEADER

Souvenir  
Edition

HOMECOMING SPECIAL EDITION

THURSDAY, OCTOBER 16, 1941

FULTON, KENTUCKY

## HERSCHEL GILES

Coach



Coach Herschel Giles came to Fulton one year ago from Black Star school at Alva, Ky., where he coached the Black Star team for four years. This is his seventh year in coaching and he stated recently that during this period he had never had a harder working squad than the 1941 Bulldogs. Coach Giles graduated from Center college in 1935, where he played end and tackle on the varsity squad. He is a stickler for precision in running plays and insists on his players keeping in perfect alignment. After attending Center college the local coach took his Master's degree at the University of Kentucky in 1940. His teaching duties are in the high school, where he teaches civics and English. Coach Giles' home town is Harlan, Ky.

## FOOTBALL SQUADS

### Fulton Bulldogs—

COLOR: Blue and White.

No. NAME—

- 11.—JODY ARMSTRONG, Guard
- 20.—LEON BARRON, Back
- 22.—GLENN CRAWFORD, Center
- 23.—SHIRLEY DAVIS, Tackle
- 21.—BILLY DUNNING, Back
- 24.—BILLY HAGAN, Tackle
- 25.—JOHN HANCOCK, Tackle
- 12.—ROBERT HART, End
- 32.—LOYAL HARTMAN, Tackle
- 27.—JOE McALISTER, Back
- 26.—H. MAC McCLELLAN, Back
- 28.—DAN McKEENE, Center
- 18.—DECK MEACHAM, End
- 15.—JACK MOORE, Back
- 22.—LOREN NELME, End
- 8.—ROBERT PARRAM, End
- 17.—DON SENSING, Guard
- 14.—JOHNNY SHARPE, Back
- 16.—LAYNE SPENCE, Tackle
- 31.—JAMES STEELE, Guard
- 30.—JACK TOSH, Tackle
- 10.—CHARLES TYNER, End
- 19.—ROBERT WHITESHELL, Back
- 13.—EARL WELLEY, Guard
- 24.—ED. WELLINGHAM, Back

### Trigg County Wildcats—

No. NAME—

- 29.—JUNIOR BANISTER, End
- 25.—JOLLY JONES, End
- 28.—W. J. HOPSON, Left Guard
- 27.—NORRIS OAKLEY, End
- 31.—JAMES HAMMOND, Q. Back
- 30.—EDDIE MAJOR, Tackle
- 26.—RAY VENTURA, Guard
- 37.—J. CAMERON, Guard
- 36.—LACEY WALLACE, Halfback
- 21.—MALCOLM RIGGIN, H. Back
- 32.—FELIX WADLINGTON, H. B.
- 24.—HUBERT CHERRY, Fullback
- 13.—CHARLES JONES, Tackle
- 43.—FRANKIE JONES, Guard
- 33.—WINTHROP HOPSON, B. B.
- 99.—JAMES GRAHAM, Tackle
- 88.—EDWARD THOMAS, H. Back
- 17.—EDGAR HARRELL, B. Back
- 77.—SYDNEY McKINNEY, Tackle
- 20.—RUPERT CHERRY, Tackle
- 16.—ROBERT THOMAS, Guard
- 14.—JOE BOREN, Blocking Back
- 19.—CHARLES MUNSSELL, Guard
- 18.—SAM SHOEMAKER, End
- 55.—H. C. HUNTER, End
- 23.—ELMER STINSON, End

## PETE GARRETT

Assistant Coach



Assistant Coach Pete Garrett is a graduate of Union University at Jackson, Tenn., in 1941. At Union he played two years on the varsity squad and previous to that time spent two years on the Holmes Junior college team at Goodman, Miss. At both schools he served in the backfield and also did the punting. He played quarterback and wing back at Union. This is his first coaching position. Coach Garrett was also a crack baseball player, having played centerfield on Holmes' state championship nine and set two records in Mississippi track meets in the 100 and 220 yard dashes. While at Union he was pledged to Alpha Tau Omega fraternity. He is employed in the Carr Institute grade school where he teaches mathematics. Cleveland, Miss., is his home town.

### THE DAILY LEADER

Gives All News and Gossip  
of Football Activities.

## HOMECOMING GAME

### TRIGG COUNTY

VS.

### FULTON BULLDOGS

## Friday Night, Oct. 17, 1941

### FAIRFIELD

## ADMISSION . . . . . 50c

(Including De-  
fense Tax)

Game Starts at 7:45 O'clock





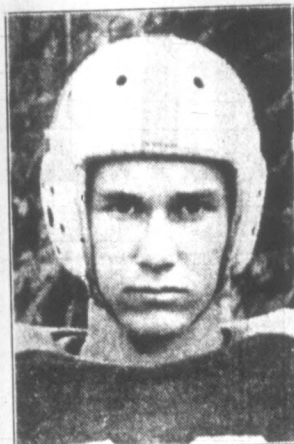
COACH HERSCHEL GILES

**HERSCHEL  
GILES**

Coach

*As Dependable As  
Our Prescription  
Service*

**EVANS DRUG  
STORE**



Hugh Mac McClellan, Halfback



SHELBY DAVIS, Lineman

**SHELBY  
DAVIS**

Lineman

*As Rugged As The  
Lumber We  
Sell*

**Kramer Lumber  
Company**



EARL WILLEY, Lineman



ROBERT HART, End

**ROBERT  
HART**

End

*As Smooth As The Silk  
In Our Fine  
Dresses*

**LADIES  
TOGGERY**

Grigg-Putnam



Dancing Dan McKenzie, Center



LOYAL HARTMAN, Lineman

**LOYAL  
HARTMAN**

Lineman

*Our Fine Foods Make  
Fine Looking  
Folks*

**COFFEE  
SHOP**



LAYNE SPENCE, End



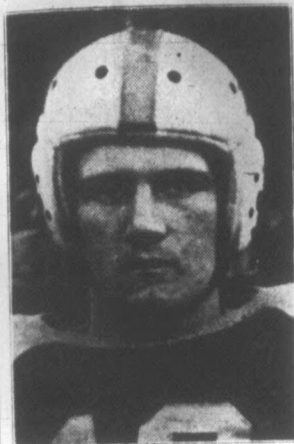


**Hugh Mac  
(Hots) McClellan**  
Halfback

*As Fast As The Action  
Of Our Entertaining  
Pictures*

**Malco Fulton  
Theatres**

McClellan, Halfback

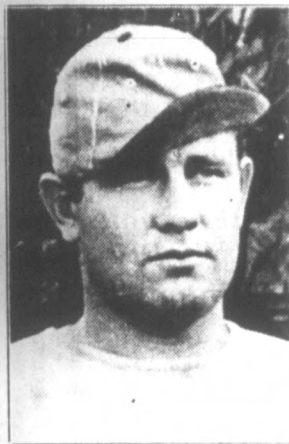


**ROBERT  
WHITESELL**  
Back

*He's Real Quality,  
Just as Our Fine  
Merchandise*

**FRANKLIN  
Quality Shop**

ROBERT WHITESELL, Back



**PETE  
GARRETT**  
Assistant Coach

*A Little Bald, but a  
Mighty Live  
Wire*

**KENTUCKY  
UTILITIES CO.**

PETE GARRETT, Asst. Coach



**EARL  
WILEY**  
Lineman

*As Dependable As  
Our Reliable  
Service*

**A. Huddleston &  
Company**

WILEY, Lineman

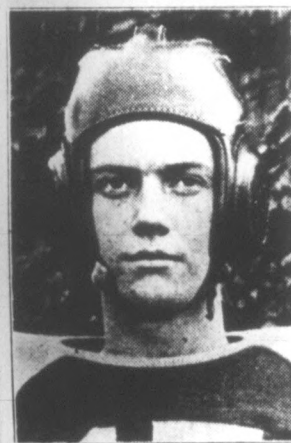


**JOHN  
HANCOCK**  
Lineman

*As Precise As Our  
Fine  
Watches*

**ANDREWS  
Jewelry Store**

JOHN HANCOCK, Lineman



**DON  
SENSING**  
Lineman

*Makes Everybody Se-  
cure—Just as Will Our  
Insurance Policies*

**FALL & FALL  
INSURANCE**

DON SENSING, Lineman



**"Dancing" Dan  
McKenzie**  
Center

*Dan likes to play Foot-  
ball as Well as We Like  
to Sell Clothing*

**P. H. WEAKS'  
SONS**

McKenzie, Center



**JAMES (Buddy)  
STEELE**  
Lineman

*As Safe and Reliable  
As Money in the  
Bank*

**City National  
Bank**

James (Buddy) Steele, Lineman



**JACK  
TOSH**  
Lineman

*He Plays Every Min-  
ute—Just as We Give  
Grocery Service*

**MEACHAM &  
HUTCHENS**

JACK TOSH, Lineman



**LAYNE  
SPENCE**  
End

*Drives With the Power  
of Gulf and Texaco  
Gas*

**Bennett Service  
Stations**

Carr Street Depot Street

SPENCE, End

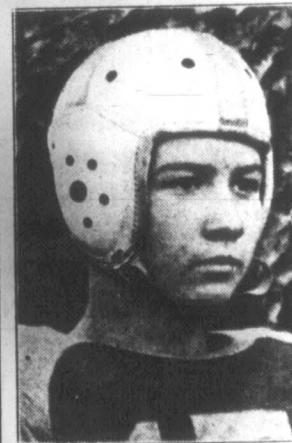


**JOHNNY  
SHARPE**  
Back

*As Sharp and Accu-  
rate as Our Grocery  
Service*

**A. C. BUTTS &  
SONS**

JOHNNY SHARPE, Back



**JACK  
MOORE**  
Quarterback

*Rises To Every Occas-  
sion, As Do Our  
Fine Flours*

**Browder Milling  
Company**

JACK MOORE, Quarterback





DICK MEACHAM, Back

**DICK  
MEACHAM**

Back

*Full of the same  
Pep and Vitality  
as This Store*

**L. Kasnow  
Clothing Store**

**PAUL  
GHOLSON**

Back

*Sorter little, but as  
as fine as a Bottle  
of Pepsi-Cola*

**Pepsi-Cola  
Bottling Co.**



PAUL GHOLSON, Back



Loren (Butch) Nelms, End

**Loren (Butch)  
Nelms**

End

*Has the Hitting  
Power of a  
Buick Eight*

**Bob White  
Motor Co.**

**James (Sug)  
Willingham**

Fullback

*He can carry the  
Groceries  
at all times*

**BOAZ &  
Hester**



James (Sug) Willingham, F. B.

**Crack Band of Fulton High School for 1941**



**YEWELL HARRISON, Director**