



MURRAY STATE
UNIVERSITY

Murray State's Digital Commons

Marshall Courier

Newspapers

8-27-1959

The Marshall Courier, August 27, 1959

The Marshall Courier

Follow this and additional works at: <https://digitalcommons.murraystate.edu/mc>

Recommended Citation

The Marshall Courier, "The Marshall Courier, August 27, 1959" (1959). *Marshall Courier*. 487.
<https://digitalcommons.murraystate.edu/mc/487>

This Newspaper is brought to you for free and open access by the Newspapers at Murray State's Digital Commons. It has been accepted for inclusion in Marshall Courier by an authorized administrator of Murray State's Digital Commons. For more information, please contact msu.digitalcommons@murraystate.edu.

The Marshall Courier

Western Kentucky's Largest Weekly Newspaper — Benton and Marshall County's Home Newspaper

Build Marshall
County And It
Will Build You

Benton The Best
Town in Ky.
By A Dam Site

Volume XXII Paid Circulation Sells — That Is The
Kind This Newspaper Offers Customers

Benton, Kentucky, August 27, 1959

First In Circulation, First In Advertising
First In The Home, First In Reader Interest Number 16

Filing Time Near For Candidates

It's almost September and time draws closer for candidates to file for municipal offices in Marshall County.

The laws says a candidate for city office can not file until 60 days before an election. And a candidate MUST file 45 days before the election.

This year's municipal elections in Marshall County will be held during the Nov. 3 general election. That means candidates must file for offices between the dates of Sept. 3 and Sept. 18.

All towns in Marshall County will elect some of their officials this November. Benton will elect six councilmen, because councilmen serve only two years. The mayor serves four years.

Calvert City, Hardin and Gilbertsville also will elect their municipal officials in November.

Little League Tourney Will Start at Calvert

Calvert City will be host to the Little League and Pony League Tournaments this year at the Community Park.

The tournaments start on Thursday, Aug. 27. Calvert's two teams will play each other at 6 p. m., followed by the Calvert Pony Teams playing at 8 p. m.

On Friday, Aug. 28, Gilbertsville will play Fredonia at 6, and the Pony team will follow at 8.

Monday, Aug. 31, Eddyville will play the winners of the two Calvert teams at 6 and 8 p. m. Championship games will be played Sept. 1. Trophies will be sold at the park to help cover cost of the tournament, balls and trophies.

On August 21, Calvert Little League Red Sox won from Fredonia 8 to 7. The ball game broke wide open when Greg Elcholz hit a 3-run homer in the 6th inning, winning the game for Calvert 8-7. The mound was shared by Michael and Gary Holland, with Charles Crofton behind the plate. Each boy on the team got at least one hit.

Calvert "Redlegs" Pony team split a double-header with Gilbertsville Aug. 20 at the Calvert Community Park.

Joe Farris was the winning pitcher for Gilbertsville winning 11-9. Milton Ford was the losing pitcher.

The second game was won by Calvert, with Larry Walker on the mound and Dwane Puckett catching. The score was 7-2. Larry Sledge was the losing pitcher.

REVIVAL AT NEW HOPE PRIMITIVE CHURCH AUG. 28

A series of meetings will be held at the New Hope Primitive Baptist Church Aug. 28-30. On Friday and Saturday nights the services will be held at 7:30 p. m. and on Sunday morning the minister will preach at 10:30 o'clock.

Elder Goulas will bring the messages.

The public is invited.

Hardin Methodist Revival Will Start Wednesday Night

A revival meeting will start next Wednesday night, Sept. 2, at the Hardin Methodist Church and will continue through Sept. 11.

Evangelist for the meeting will be Rev. Louis Joiner. Services will be held each night at 7:30.

The church and its pastor, Rev. R. L. Dotson Jr., invited the public to attend these services.

Traffic Tied Up By Crash On Bridge

An automobile accident on the Clark's River Bridge Tuesday morning tied up traffic on U. S. 641 for about a half hour.

A 1954 GMC tractor pulling a house trailer collided with an automobile driven by Mrs. Herman Holley of Benton Route 4.

The tractor was driven by Archie Maxwell of Plymouth, Ind. State Trooper Brown said Winfred Fries of Paducah, driving a trailer truck, stopped his vehicle at the approach to the bridge. He was going south, and Maxwell was behind him. When Fries stopped, Maxwell pulled onto the bridge and met the Holley car, which was going north. Neither vehicle was badly damaged and no one was hurt, Trooper Brown said.

Jess Lovett, 52-year-old barber, was fined in county court Monday on a charge of drunk driving. The fine and court costs amounted to \$106.50. Lovett, unable to pay the fine, was placed in jail.

Lovett's car collided with one driven by Joe L. Green Sunday night at 7:30 on Ky. 1445, a quarter of a mile south of Benton. State Trooper Sowell said Lovett's car was four feet over the highway centerline when it hit Green's station wagon.

Green, 30, and his daughter, Sharon, 2, suffered cuts and bruises. A son, Danny Green, 4, suffered a broken collar bone. They were treated at McClain Clinic.

QUARTERLY MEETING AT CALVERT CITY CHURCH

First quarterly conference will be held at the Calvert City Methodist Church Monday, Aug. 31, at 7:30 p. m. Rev. Wayne Lamb, district superintendent, will preach after the business session. Potluck supper will be held at 8:30. Church members and visitors are urged to attend by the pastor, Rev. J. E. Moore.

John Thompson of Calvert City was a recent patient at the Riverside Hospital in Paducah.

200 Attend Annual Brewers Homecoming

Brewers held its annual homecoming Sunday at the Brewers Methodist church. Approximately 200 attended the event.

After the morning worship services, lunch was spread on long tables under the giant shade trees of the church lawn.

Rev. John Tate, pastor, said and the crowd lined up and filled their plates with delicious food for which the Brewers women are noted.

The Chesters, the Perrys, the

Start Work On N. End Of Poplar

The State Highway Department this week started work of cutting the north end of Poplar Street into Main Street. The streets will meet just south of the railroad tracks.

Ultimate goal of the work is to make Main Street a one-way thoroughfare going south, and Poplar Street a one-way artery going north.

The south end of Poplar Street already has been tied into U. S. 641 at Benton's City Park. The Highway Department now is working to tie the north end of Poplar into 641.

The Highway Department has put a new coat of black topping on Main Street, and presumably will do the same thing to Poplar Street.

No date has been set for making the streets one-way thoroughfares.

Support Price Of 1959 Corn Set at \$1.17

The minimum price support rate for the 1959 crop corn produced in Marshall County has been set at \$1.17 per bushel, according to Renlee Rudolph, chairman of the Marshall ASC County Committee.

Mr. Rudolph said warehouse storage loans and purchase agreements will be available from harvest until May 31, 1960. Farm-stored loans and purchase agreements will be available from harvest until approximately March 31, 1960, with the final date of availability of loans to be set at a later date by the ASC State Committee.

To be eligible for a loan or a purchase agreement, the corn must grade No. 3 or No. 4, on test weight only, except for moisture. Ear corn stored on the farm must not contain more than 20% moisture, while shelled corn stored on the farm in a commercial warehouse must not contain more than 13.5% moisture.

Corn allotments are not in effect this year, therefore, each producer of corn will be eligible for a loan or purchase agreement.

CHURCH DINNER TONIGHT

A fellowship dinner will be held tonight (Thursday) at the Benton Methodist Church in honor of Tommy Peel, youth director of the church during the summer. Tommy will leave Sept. 3 for Texas, where he will do some college work.



REAL PRETTY PLACE - This is a real pretty farm house and should be easy to identify. If you know for SURE whose house it is, phone The Courier Friday at 1 p. m.

Senate Group Okays Clark's River Project

The U. S. Senate agriculture committee last week approved the \$3,900,940 watershed program for the East Fork of Clark's River in Marshall, Calloway, Graves and McCracken counties in Western Kentucky and Henry County, Tenn.

The news was sent to Benton in telegrams from Senators Cooper and Morton.

The House agriculture committee said it probably would consider the measure today (Thursday).

The East Fork project is a flood prevention program comprising 201,441 acres. The plan calls for 254,400 lineal feet of channel improvement and construction of 15 floodwater retarding structures of 17,240 acre-feet capacity.

The largest reservoir will hold 2,618 acre-feet of water. Land treatment measured will cost \$2,456,471 and the flood retarding structures \$1,444,469. The federal share of the total cost will be \$1,390,306.

Miss Sondra Houser Guest Of Honor At Kenlake Luncheon

Miss Sondra Houser, Paducah, bride-elect of George Elche Jr., Johnson City, Tenn., was guest of honor at a luncheon given by Mrs. Charles Mercer and Mrs. C. O. Bondurant, Murray, and Miss Daisy Houser, Benton, at the Kenlake Hotel on Thursday, Aug. 20.

Miss Houser wore for the occasion a floral sheath dress in shades of orange and brown. She was presented a corsage of white carnations by the hostesses, also a silver tray as a wedding gift.

Those attending were Mrs. O. J. Houser, Paducah, Mrs. M. L. Dukes and Mrs. Allen Dukes, Big Bear Camp, Mrs. Joe Scott, Barnes and Miss Jo Beth Barnes, Benton. Miss Robbie Jones, Chicago, the hostesses and the honoree.

The wedding will be an event of September 3 in Paducah.

MEMORIAL SERVICES SET SEPT. 6 AT UNION RIDGE

Memorial services will be held Sunday, Sept. 6, at Union Ridge. Otis Jones will preach at the 11 a. m. worship services. Singing will be enjoyed in the afternoon. Everybody is invited to attend.

Joe Vick, son of R. O. Vick of Benton, has joined the U. S. Army and is stationed at Ft. Meade, Md. He is in the guided missile division.

Mystery Farm Has Modern, Pretty Home

This week's Mystery Farm is a real pretty place, with a nice large and modern residence on the property.

It should be easily identified. Last week's farm was never identified.

Daniel York thought it was the farm place occupied by Mrs. Refus Rose, a widow living on Benton Route 3.

And Mrs. Lonnie Odom thought it was the Ned Pace farm near Hardin.

We checked both of these reports and learned that both were wrong. But we never did learn whose farm it was.

This week's farm surely will be identified. It's such a nice house that a lot of folks should know who lives there. If you know, phone The Courier office Friday at 1 p. m.

Funeral Is Held At Hardin Church For Cratus Edwards, 77

Funeral services for Cratus Edwards, 77, who died Sunday at the home of his son, Glen Edwards in Hardin, were held Tuesday at the Hardin Church of Christ, Bill Johnson and John Hicks officiated.

Burial by Filbeck-Cann, was in the Benny Starks Cemetery near Hardin.

Mr. Edwards was a member of the Hardin Church of Christ. He was born in Todd County but had lived in Hardin for 71 years. He was a retired farmer.

Besides the son, he is survived by two grandchildren and two great-grandchildren.

Van A. Stille of Cassabianca, Morocco, arrived in New York City Tuesday and will come to Benton to spend 10 days in the home of his mother, Mrs. R. O. Vick. At the end of his visit, he will go back to New York, where he will enter school at the University of New York to study international law.

Joe Vick, son of R. O. Vick of Benton, has joined the U. S. Army and is stationed at Ft. Meade, Md. He is in the guided missile division.

Youth Is Tried Twice; Juries Deadlocked

A Calloway County teenager was tried twice Monday in Marshall County Court, and juries were deadlocked in both cases.

The youth, Larry Thorn, was charged with breach of peace and reckless driving at Hardin. Thorn lives near Dexter. Hardin resides complained of his driving habits.

Thorn also had been tried before on a driving charge and that jury also was deadlocked.

Pal Howard served as county judge during jury trials Monday in the absence of Judge Artelle Haltom.

Rally Set By Methodists

A district-wide evangelistic rally will be held at the Broadway Methodist Church, Paducah, Wednesday, Sept. 2, at 7:30 p. m. This rally should claim the interest of the members of all the Methodist churches in the Paducah District.

Members of membership and evangelism commissions, official board members, leaders of Women's Society groups, workers with youth; and young people themselves are urged to attend.

This rally is to be an inspirational meeting in the interest of an intensive ten weeks cultivation program in the churches of the district, and is a part of the "Year of Enlistment" in The Methodist Church this year.

Dr. C. W. Grant, minister of Christ Methodist Church, Memphis, Tenn. and R. H. Bond, conference lay leader, Dyersburg, Tenn., are to speak at the rally.

Briensburg Burial For Mrs. Collins

Funeral services for Mrs. Lucy Sellers Collins, 81, who died at Riverside Hospital in Paducah Monday, were held Wednesday at the Filbeck-Cann Funeral Home. Charles Houser officiated.

Burial was in the Province Cemetery at Briensburg.

Mrs. Collins, a native of this county, had made her home in Murray and Paducah since leaving here. She was a member of the Clements St. Church of Christ in Paducah.

She is survived by four daughters, Mrs. Chloe Collier of Paducah, Mrs. Mae Culp and Mrs. Ruth Lee of Detroit, Mrs. Allie Sledge of Ohio; two sons, Clifton Sellers of Sarasota, Fla., and Milburn Collins of Rossville, Ga.; two brothers, Lloyd Potts of Benton and Eltie Potts of Rosclair, Ill.; 14 grandchildren; 21 great-grandchildren and one great-great-grandchild.

MRS. BEULAH FILBECK FUNERAL IS CONDUCTED

Funeral services were held Wednesday afternoon at the Filbeck-Cann Chapel for Mrs. Beulah Filbeck, 71, of Benton Route 2. Revs. John Tate and Eura Mathis conducted the rites. Burial was in Brewers Cemetery.

Mrs. Filbeck is survived by two daughters, Mrs. Lloyd Carson of Kirksey Route 2 and Mrs. Clyde Reed of Benton Route 2; two sons, William of Route 2 and Roy Filbeck of Rt. 3; two brothers, Gus Lamb of Murray and Galet Lamb of Richmond, Va.; 13 grandchildren and 15 great-grandchildren.

Enrollment In Schools Increases

Schools opened this week in Marshall County and preliminary figures indicate an increase in enrollment.

Joe Nail, personnel director for the county schools, said Wednesday that enrollment in all county schools totaled 2,879 pupils. The figure includes all grade and all high school students.

At the end of the school year last May, the county schools had an enrollment of 2,741. An increase of 138 pupils is indicated.

New classrooms were added at Sharpe, Fairdealing and Briensburg to take care of the increase in students. Most of the increase was in the county grade schools.

Benton city schools opened Wednesday of this week, but only students in the 8th through the 12th grades registered. Pupils from the first through the 7th grades will be registered today and tomorrow (Thursday and Friday).

No figures, therefore, are available yet on enrollment in the Benton schools. These figures will be printed next week, when classes will start at Benton.

Burglars Hit New Cafe On Paducah Road

Burglars broke into the new Gottschalk restaurant at the intersection of the Paducah road and the Access road sometime Monday night.

The thieves took an electric toaster, a quantity of meat and other foods, all valued at \$300.

Entrance was gained by prying open a rear casement window.

The theft was discovered Tuesday morning by Gene Gottschalk when he opened the place. He and his father, Charles Gottschalk, own the new restaurant, which is scheduled to open this weekend or early next week.



GOOD FOOD always is enjoyable. Ask these young folks who attended the Brewers Homecoming last Sunday. Left to right are Paula Cresson, Pat Tate, Judy Howell, June Barnett of St. Louis, in black dress, Roger Perry in checked shirt, Richard Teckenbrock, seated, and Ronnie Cronch, with back to camera.



AT BREWERS HOMECOMING — These men relaxed after eating their fill at the Brewers Homecoming Sunday. Left to right: Carl Wade Chester, Rev. John Tate, pastor of the church. Rene Gu-tierrez, an IFYE student from Nicaragua who was visiting the Chesters, Olice Mason, a well known farmer, and Solon Hendricks, store owner.

Want Ads

FOR SALE—Edward Davis' small 3-room house and lot 35x225 located on Murray paved highway about one mile south of court-house in Benton. Buy this for only \$100 down and \$20 a month. Total price, \$1250. Phone EX 5-4545 or see H. V. Duckett, real estate, Valvert City, Ky.

LOR SALE—one antique round pedestal table. Refinished. See at 574 Mayfield Hwy. 2tp

FOR RENT—5 room and bath modern, air conditioned home on Ridge road at K. Lake, Gilbertsville. Refrigerator and stove optional. Ph. FO2-4993. 2tp

PLUMBING & HEATING SERVICE
All types of repairs and installations. Also contract jobs. Free Estimates. Gas work a specialty. Gaylon Burd, Phone LA7-7402. rtsc

BULLDOZER WORK
All kinds of bulldozer work—Clearing, pond digging, drainage ditches. For free estimates contact Harold Hall, PO Box 213, Calvert City, Ky., or phones EXPRESS 5-4043 rtsc

FREE'S EXPERT WATCH REPAIRING
Highway 68
Bands - Jewelry - Gifts - All work guaranteed. Open from 9 a. m. 'til 9 p. m. Phone LA7-8962 Large enough to serve you—Small enough to appreciate.

RUCK & BECKY FREE WATCH & GIFT SHOP
Zemo Great for Minor Burns, Cuts
Zemo, a doctor's formula, liquid or ointment, soothes, helps heal minor burns, cuts, bruises. Family antiseptic, eases itch of surface rashes, eczema, teen-age pimples, athlete's foot. Stops scratching, so aids faster healing. For stubborn cases, get Extra Strength Zemo.

Riley Motors
Authorized
MERCURY
Sales and Service

THE BIG M
Factory Trained Mechanics
COMPLETE BODY SHOP
Safe Buy Used Cars

RILEY MOTORS
108 N. Main Benton, Ky.

BUY - SELL - TRADE NEW - USED Furniture
AUCTION EVERY FRIDAY 7:30 P.M.
125-129 N. 3rd St. PADUCAH, KY.
OSBORNE'S Exchange Furniture & Auction House

SALES & SERVICE
Quality Used Cars
Priced to Sell
ROBERTS
Motor and Implement, Inc.
100 West 12th Benton, Ky.

Quick Relief of HEADACHE
EASE PAINS OF HEADACHE, NEURALGIA, NEURITIS with STANBACK TABLETS or POWDERS. STANBACK combines several medically proven pain relievers... The added effectiveness of these MULTIPLE ingredients brings faster, more complete relief, easing anxiety and tension usually accompanying pain.

STANBACK
Test STANBACK against any preparation you've ever used
Suggested by Gold Medalists

FOR SALE

Just completed! A beautifully landscaped salmon brick home in Parkview Heights subdivision. This lovely house includes three bedrooms, plenty of closet space, spacious bath and utility area combined, electric heat, handy U shaped kitchen with Frigidaire french door built in oven and cooking top, roomy den and dining area with a brick fireplace, and a large living and dining area with luxurious all wool carpeting wall to wall. All this in a moderate priced home. See it today. FHA terms available. Kinney and Hiett, Builders of Quality Homes, Ph. Days LA7-5321 or Nights LA7-5881, Benton, Ky. rtsc

NOTICE—I will not be responsible for any debt made by anyone other than myself.
Lena Mae (Lee) Copeland. 3tc

ACHING MUSCLES
Relieve pains of tired, sore, aching muscles with STANBACK, tablets or powders. STANBACK acts fast to bring comforting relief... because the STANBACK formula combines several prescription type ingredients for fast relief of pain.

WATCH REPAIRING
Expert repair work on all makes of watches and clocks. Prices reasonable.
D. W. FREE
Across the street from Pete's Grocery, Palma, Ky. rtsc

WCBL ALWAYS IN TUNE WITH YOU RADIO

INGROWN NAIL HURTING YOU?
Immediate Relief!
A few drops of OUTGROW bring blessed relief from the burning pain of ingrown nail. OUTGROW softens the skin underneath the nail, allows the nail to be cut and thus prevents further pain and discomfort. OUTGROW is available at all drug counters.

GET THE TV PICTURE YOU PAID FOR!

CHANNEL MASTER T-W ANTENNA
Brings out the full picture quality your set was built to deliver—on ALL CHANNELS (2-13).
Uses electronic "Traveling Wave" principle to eliminate "ghosts," interference and "snow."
Brings in "difficult to get" channels beyond the range of ordinary antennas.
The CHANNEL MASTER T-W will last years longer than ordinary antennas

Radio Service Center
208 E. 13th Benton, Ky.
We repair all makes of Radios and Television Sets.
Donald Travis - Jack Proctor

FREE! BASEBALL BOOK
This exciting illustrated booklet of facts and figures will help you know and enjoy baseball better. Get your free copy from your nearby State Farm agent.

STATE FARM MUTUAL AUTOMOBILE INSURANCE COMPANY
Home Office: Bloomington, Ill.

presented by your friendly State Farm Agent
J. Homer Solomon
Local Agent
1020 Main LA 7-3801

Enjoy the CBS "Baseball Game Of the Week!"

GET HOTPOINT
You Can Get A Better Deal At
ERVIN POE'S
In Palma
RADIO SERVICE CENTER
Benton, Ky.

IS "IRON-HUNGRY BLOOD" MAKING YOU ONLY "HALF" A WOMAN?
Are You So Run-Down You Can't Give Your Husband and Family Blood-Strengthening Action? Then Discover The Wonderful How tragic when a woman feels so tired, so weak and run-down she can't be a real companion! Luckily, it's often due to "Iron-Hungry Blood" (simple iron deficiency anemia). Then it's need- less for those women to suffer such awful weariness. Now, a wonderful iron tonic can help relieve this condition... thus renew your vitality! It's Lydia E. Pinkham's Tablets, only iron tonic made especially for women! Rich in iron, Pinkham's Tablets start to strengthen "Iron-Hungry Blood" in one day!

FOR FEMALE AILMENTS! Doctors' tests prove famous Lydia E. Pinkham's Vegetable Compound (liquid) also brings quick relief from discomforts of monthly pain and change-of-life.

BEAUTIFUL KENTUCKY LAKE PROPERTIES

Lots, homes, cottages and business places

FLORENCE GIBBS, Realtor
Highway 641 Phone FO 2-4211
Gilbertsville, Ky.

SEPTIC Tank and grease trap cleaning. Call Pat Wilkins LA7-7221. rtsc

WATCH REPAIRING
Expert repair work on all makes of watches and clocks. Prices reasonable.
D. W. FREE
Across the street from Pete's Grocery, Palma, Ky. rtsc

WCBL ALWAYS IN TUNE WITH YOU RADIO

INGROWN NAIL HURTING YOU?
Immediate Relief!
A few drops of OUTGROW bring blessed relief from the burning pain of ingrown nail. OUTGROW softens the skin underneath the nail, allows the nail to be cut and thus prevents further pain and discomfort. OUTGROW is available at all drug counters.

GET THE TV PICTURE YOU PAID FOR!

CHANNEL MASTER T-W ANTENNA
Brings out the full picture quality your set was built to deliver—on ALL CHANNELS (2-13).
Uses electronic "Traveling Wave" principle to eliminate "ghosts," interference and "snow."
Brings in "difficult to get" channels beyond the range of ordinary antennas.
The CHANNEL MASTER T-W will last years longer than ordinary antennas

Radio Service Center
208 E. 13th Benton, Ky.
We repair all makes of Radios and Television Sets.
Donald Travis - Jack Proctor

FREE! BASEBALL BOOK
This exciting illustrated booklet of facts and figures will help you know and enjoy baseball better. Get your free copy from your nearby State Farm agent.

STATE FARM MUTUAL AUTOMOBILE INSURANCE COMPANY
Home Office: Bloomington, Ill.

presented by your friendly State Farm Agent
J. Homer Solomon
Local Agent
1020 Main LA 7-3801

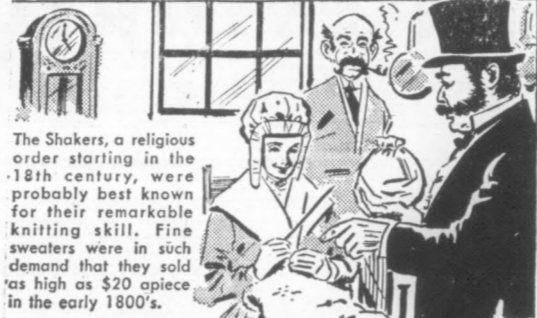
Enjoy the CBS "Baseball Game Of the Week!"

GET HOTPOINT
You Can Get A Better Deal At
ERVIN POE'S
In Palma
RADIO SERVICE CENTER
Benton, Ky.

IS "IRON-HUNGRY BLOOD" MAKING YOU ONLY "HALF" A WOMAN?
Are You So Run-Down You Can't Give Your Husband and Family Blood-Strengthening Action? Then Discover The Wonderful How tragic when a woman feels so tired, so weak and run-down she can't be a real companion! Luckily, it's often due to "Iron-Hungry Blood" (simple iron deficiency anemia). Then it's need- less for those women to suffer such awful weariness. Now, a wonderful iron tonic can help relieve this condition... thus renew your vitality! It's Lydia E. Pinkham's Tablets, only iron tonic made especially for women! Rich in iron, Pinkham's Tablets start to strengthen "Iron-Hungry Blood" in one day!

FOR FEMALE AILMENTS! Doctors' tests prove famous Lydia E. Pinkham's Vegetable Compound (liquid) also brings quick relief from discomforts of monthly pain and change-of-life.

ODDLY ENOUGH by Whisman



The Shakers, a religious order starting in the 18th century, were probably best known for their remarkable knitting skill. Fine sweaters were in such demand that they sold as high as \$20 apiece in the early 1800's.



The Cardigan type sweater became popular only because it was easier for a woman to put on without messing her hair or the pullovers did.

Mr. and Mrs. Hal Fiser and children of Clarksdale, Miss., will arrive this weekend to spend a few days with his mother, Mrs. Eva Fiser.

Miss Marsha Wyatt left last week for Atlanta, Ga., to visit a girl friend who attended school with Marsha at the Brenau Academy in Gainesville, Ga., last year.

Mr. and Mrs. Aubrey Gregory of Dearborn, Mich., visited Mr. and Mrs. Orville Chandler in Benton last week.

New! Gillette Adjustable Razor
9 Settings for Superb Shaves!
NOW \$1.95
You turn dial from 1 to 9 for the exact setting that matches your skin and beard.

THE BEST Is FIBERGLAS Blown Insulation
Don't Be Fooled by Substitutes
HOME IMPROVEMENT Company
Phone 44 Mayfield, Ky.

RAISING KANE
HELLO SUGAR! WELL, I'M AN ACE SALESMAN NOW! HERE'S MY BONUS CHECK FOR ONE HUNDRED AND FORTY-FOUR DOLLARS!
HELLO POP!
I'M SO PROUD OF YOU DEAR!
ALL THE BIG CLOTHING MANUFACTURERS ARE TALKING ABOUT THE BIG SALE I MADE! I'M THE ENVY OF EVERY SALESMAN IN TOWN!
POP, PARDON ME FOR INTERRUPTING! BUT...
YES PUNKY! WHAT IS IT?
CAN I HAVE YOUR AUTOGRAPH?

SALLY SNICKERS
THOSE APPLES SURE ARE GOOD! GUESS I'LL HAVE ANOTHER ONE!
THESE APPLES TASTE WONDERFUL, DAD!
BUT, DON'T EAT TOO MANY!
... AND LOOK OUT FOR THE WORMS, SALLY!
WHEN I EAT AN APPLE, THE WORMS HAVE TO LOOK OUT FOR THEMSELVES!

Raising the Family.
WELL WITH THE MULLING DANCED BUNCH OUT IN GOING TO READ MY PAPER AND SMOKE THIS OLD JIMMY PIPE. I'LL CHOKER!
WHEN MA'S HOME IT'S DONT SELL UP MY CUPBARS THIS AND DONT THAT—THIS IS THE LIFE OR LILEY!
UGH!
IF THEM FOOL WOMEN EVER PUT THEIR HAIR COMB IN MY TROUSERS I'LL—IL—DOO—ALL!

Subscribe To The Courier

POWELL COAL CO.
Warm Morning Stoves
Sand and Gravel
Limestone Rock
Fertilizers
Calvert City, Ky.
Phone EX5-4383

CONSTIPATED?
Medical reports show how folks over 35 can establish regularity
After 35, irregularity often becomes a problem. What you need is something that aids nature and helps establish regularity. Such an aid to regularity is the daily use of SERUTAN. Here's medical evidence: A group of men and women took SERUTAN daily under medical supervision. In case after case SERUTAN, taken daily, helped establish regularity. So, for real relief from constipation after 35, try SERUTAN, powder or granular.

SERUTAN
"Read it Backwards"

FLORIDA...THE BUSINESS MAN'S AIR LINE
Fly Ozark to make most profit use of your

Ozark serves Benton through Barkley Field in Paducah with convenient schedules to St. Louis, Nashville and Louisville with world-wide connections...

When you have need of travel—air mail, air express, or air freight service, Call Ozark first—phone 3-6238 in Paducah—for information and/or reservations—or contact your local travel agent.

OZARK AIR LINES

SH

These 2 New s More

Bot set new stand

If the maker of your specifies "premium Super Shell with TCP"

You get more power more mileage and a smoother-running engine

Super Shell is the most powerful oil your car can use! It's so high engine knocking is no longer a problem.

Super Shell's extra power, from aviation fuel ingredients, gives you extra mileage when cruising.

TCP additive stops spark plug misfiring—tunes your engine while you drive.

your dollar goes farther

USER'S

Main St.

The Life Of A Senate Lady

By MRS. JOHN SHERMAN COOPER



It has been terribly hot up here the last few weeks but every now and then there are compensations for staying in Washington all through August. Last night the Secretary of Defense and Mrs. McElroy gave an official dinner aboard "The Sequoia." This small yacht belongs to the government and is used by the Secretary of the Navy or other officials in the Defense Department for entertaining.

There is nothing more pleasant than going out on the Potomac on a hot summer night, particularly if there is a full moon, we were looking forward to this evening. My heart sank when the telephone rang at 10 minutes of 7. My husband told me that the Senate was still in session and he didn't know when the voting would stop.

That meant a quick caucus with Mrs. McElroy and the other Senate wives who were invited to the dinner. We all decided to go to the Senate and wait hopefully for our husbands while Mrs. McElroy very courteously said they would delay the departure until we arrived. By the time I got to the Capitol, the last vote had been taken and we set off for the Naval Air Station where the yacht was docked. We were the last ones aboard before we set sail up the Potomac.

There were about 30 guests, including the Australian Ambassador and Mrs. Beale, and the Philippine Ambassador and Mrs. Romulo, while the Senate was represented by Senator and Mrs. Bridges of New Hampshire, Senator and Mrs. Saltonstall of Massachusetts and us. The other guests consisted of officials of the Defense Department, including John N. Irwin and his wife, who is perfectly charming and the sister of Thomas Watson, whose new I. B. M. plant has just opened in Lexington.

We had a delicious buffet dinner on the aft deck with a view of the full moon and water which was as black and shiny as patent leather. There was the real sense of isolation that you always get on a boat when you have left the city behind.

I have been on the Sequoia many times but never cease to be moved by the ceremony that takes place when the small yacht arrives in front of Mount Vernon. The motors are stopped and the guests and crew line up at attention on the deck. Then a bell rings a 21-gun salute which is, of course, the same as a 21-gun salute for the President of the United States. Then the Star Spangled Banner is played while everyone stands at attention. I think that George Washington would be pleased by the respect that is always paid him by our Navy.

On the way back, we all sang the songs that everyone knows and felt as happy as children on a hayride. As we drew near to the dock we could see in the distance the beautiful illuminated spire of the Washington Monument and recognized again how close George Washington is to the people who live in his town.

We are giving a reception next week for the Republican Minority Leader of the Senate and Mrs. Dirksen and the Republican members of the Senate which is a sort of goodbye party for this year and also a birthday party for our Senator. Among the things we are serving are the delicious beaten biscuits from Berea College, with country ham. Please cross your fingers for us that it doesn't rain, as we are planning to have the reception in the garden.

I'll tell you about it in my next letter.

THE MARSHALL COURIER
Published Thursday of each week at 200 East Eleventh Street in Benton, Ky. Entered as second class mail matter May 30 at the postoffice at Benton, Ky., under the act of March 3, 1879. Subscription rates—\$2 per year in Marshall and adjoining counties; \$2.50 per year elsewhere in Kentucky; \$3 per year outside of Kentucky. Classified advertising rates: 10 cents per line. Display advertising rates upon request. Cards of thanks, 75 cents each. Marshall Wyatt and Woodson Cross, Publishers

Personal...

Mrs. Eliza Edwards of Benton has as her guests this week Mr. and Mrs. Shelton Peck and sons, Richard Peck of Roseville, Mich., and Arthur Lee Peck of the U. S. Navy, Norfolk, Va., Mr. and Mrs. Lowell English and son, Douglas

and Larry of St. Clair Shores, Mich. Raymond Stone, a former Marshall County resident, now living in Idaho, had surgery for the removal of a tumor near his heart, in Houston, Texas, recently. He is the son of the late Hardin Stone. Renus Newton and Mrs. Hattie Newton of this county, went to see him while he was in Houston.

Miss Marilyn Karnes, daughter of Mr. and Mrs. Clint Thomas Karnes, of Kevil, underwent surgery recently for the removal of her appendix at the Riverside Hospital in Paducah. Mrs. Hazel Camp of Washington, D. C., and Mr. and Mrs. Billy G. Brown and children have been recent guests in the home of Mrs. Eva Brown and Mrs. Hazel Egner.

TO SEE THE WORLD
St. Asher, young man about town, has joined the U. S. Navy. He'll be leaving soon, provided the Navy doctors accept his 230 pounds of weight. Right now, he's particularly interested in somebody giving him a going-away party. He's a son of Mr. and Mrs. Joe Asher of Benton.

Subscribe To The Courier

Get ready! Get set! Go...

WOW!

YOU CAN BET YOUR BOOTS DRIVER'S HAS WHAT I WANT FOR SCHOOL

Natural Poise

Petite Debs

SHE KNOWS FASHION... SHE LIKES WHAT SHE SEES AT DRIVER'S

Driver's

SHOE DEPT.—MAIN FLOOR

Paducah's Fashion Store Supreme
Broadway Near Fourth
PADUCAH, KY.

A. \$7.99
B. \$6.99
C. \$6.99
D. \$6.99

Others From \$4.99 to \$8.99

SHELL'S ON TOP

These 2 gasolines give you
New power
New smoothness
More mileage

Both contain TCP—
set new standards for engine performance

If the maker of your car specifies "premium":

Super Shell with TCP

You get more power, more mileage and a smoother-running engine.

Super Shell is the most powerful gasoline your car can use! Its octane rating is so high engine knock is no longer a problem.

Super Shell's extra power, from aviation fuel ingredients, gives you extra mileage when cruising.

TCP additive stops spark plug misfiring—tunes your engine while you drive.

If the maker of your car specifies "regular":

NEW Shell Gasoline with TCP

All-around performance no "regular" can beat—performance 88% of all regular gasoline fails to deliver.

New Shell Gasoline at "regular" price is loaded with premium features—is higher in octane than premium grades of a short time ago.

You get TCP to smooth out a rough engine. And new Shell Gasoline is made to give you better mileage.



your dollar goes farther with Shell—and so do you!

USER'S SHELL STATION
Benton, Ky.
Main St.

Back to School

VALUES IN SHOES FROM SCHIFF'S

GIRLS' & MISSES' SUEDE OXFORDS

All Colors—
● BLACK
● WHITE
● RED
● TAN
● BROWN

\$3.99 - \$4.99

Sizes 4 to 10 — Narrow and Medium Widths

BLACK and WHITE OXFORDS

LIGHT WEIGHT WITH CREPE SOLES

\$3.99 to \$4.99

Sizes in Both Styles 4 - 10 — AA & B Widths

Also Children's Sizes . . . \$2.99 and \$3.99

MEN'S & BOY'S OXFORDS & LOAFERS

Sizes 6 1/2 to 11 - B & D Widths

Black, White, Brown, in Soft Durable Leather

\$4.99 to \$10.95

TEEN AGE FLATS

LEATHER and SUEDE STYLES

Many Different Colors — Narrow & Medium Widths

\$1.99 - \$4.99

Boys' and Little Gens' BACK TO SCHOOL OXFORDS

B & D Lasts — Come in Leather and Bucks

\$2.99 to \$6.99

Bigger Boys' Sizes . . . \$4.99 to \$7.99

GIRLS' and MISSES' GYM OXFORDS

Narrow Widths **\$1.99 to \$2.99**

BASKETBALL SHOES

Little Boys', Big Boys' and Men's Styles . . . \$1.99 to \$4.99

SCHIFF'S SHOE STORE

312 Broadway Phone 5-6044 Paducah, Ky.

DETAIL FINANCIAL STATEMENT BENTON WATER & SEWER SYSTEM July 1, 1958 to June 30, 1959

Month	RECEIPTS	Miscellaneous	TOTAL
July	4,464.73	105.00	4,569.73
August	4,653.53	743.50	5,397.03
September	4,679.33	326.00	5,005.33
October	4,796.21	317.00	5,113.21
November	4,468.88	634.16	5,103.04
December	4,247.35	201.00	4,448.35
January	4,207.46	268.00	4,475.46
February	4,252.70	218.20	4,470.90
March	4,140.64	181.00	4,321.64
April	4,186.12	308.71	4,494.83
May	4,606.82	192.00	4,798.82
June	4,434.73	330.50	4,765.23
TOTAL RECEIPTS	53,138.50	3,825.07	56,963.57

DISTRIBUTION OF FUNDS		
BOND AND INTEREST ACCOUNT	24,000.00	
DEPRECIATION ACCOUNT	2,623.92	
OPERATION ACCOUNT	30,339.65	
TOTAL	56,963.57	

RECAPITULATION OF FUNDS BOND AND INTEREST ACCOUNT

BALANCE JUNE 30, 1958	20,501.75
DEPOSIT AS ABOVE	24,000.00
TOTAL	44,501.75
BONDS PAID	12,000.00
INTEREST PAID	12,280.00
BALANCE JUNE 30, 1959	20,241.75
TOTAL	44,501.75

DEPRECIATION ACCOUNT	
BALANCE JUNE 30, 1958	6,259.70
DEPOSIT AS ABOVE	2,623.92
TOTAL TO ACCOUNT FOR	8,883.62
TRANSFER TO THE MAINTENANCE ACCOUNT	4,300.16
BALANCE JUNE 30, 1959	4,583.46
TOTAL	8,883.62

OPERATION & MAINTENANCE ACCOUNT	
BALANCE JUNE 30, 1958	7,421.98
DEPOSIT AS ABOVE	30,339.65
TRANSFER FROM DEPRECIATION ACCOUNT	4,300.16
TOTAL TO ACCOUNT FOR	42,061.79
EXPENDITURES AS PER DETAIL	22,332.69
PAYROLL	15,413.64
BALANCE JUNE 30, 1959	4,315.46
TOTAL	42,061.79

PAYROLL JULY 1958 TO JUNE 1959	
FRANK DUNN	1,112.68
EDD AUSTIN	2,317.05
GEORGE MABRY	185.40
HERMAN MCGREGOR	1,171.44
STANLEY DARNALL	852.12
CLAUDE HOLIT	2,070.53
JAMES MARSH	2,291.59
LOIS HOLT	1,082.99
TOY CASTLEMAN	944.79
CHARLIE ROSS	63.61
WILLIAM JOHNSON	1,464.68
MIRL COLLINS	37.54
ROBERT LARIMER	831.42
PAUL CHAMBERS	616.40
HERMAN CREASON	275.34
GENIE CORNWELL	95.86

BENTON WATER AND SEWER SYSTEM OPERATION AND MAINTENANCE ACCOUNT EXPENDITURES JULY 1, 1958 TO JUNE 30, 1959

JULY, 1958	
Social Security Revolving Fund	138.44
Department of Revenue	11.36
Director of Internal Revenue	42.70
Working Fund Account	41.75
Treas Lumber Company	53.73
Henry A. Petter Supply Co.	603.57
Western Auto Associate Store	3.15
Preston Chemical Company	31.50
Halston Equipment Company	5.31
Hersey Manufacturing Company	9.32
Warren-Knight Company	285.00
Delta Tool & Supply Company	10.21
Central Service Association	64.36
Davis Meter & Supply Company	97.52
Pat Wilkins	95.00
Benton Plumbing & Electric Company	9.64
Miller Ice Company	0.66
Southern Bell Tel. & Tel. Co.	16.00
Solomon Phillips 66	29.99
Miller-Johnson Company	5.70
Crawford-Ferguson Co.	4.22
Long Concrete Company	42.19
George Lyles Concrete Company	104.00
Rockwell Manufacturing Company	175.44
City Light & Water Co.	144.59
Working Fund Account	45.73
Central Service Association	150.00
Federal Reserve Bank	83.60
TOTAL JULY, 1958	2,309.56

AUGUST, 1958	
Charlie Ross	6.00
Southern Division Republic	1,265.50
Dycus Hardware Company	215.77
Peel & Holland	49.43
Zep Manufacturing Corp.	108.00
Central Service Association	60.41
Henry A. Petter Supply Company	559.34
Treas Lumber Company	178.42
Griffin Foundry & Manufacturing Co.	84.60
Southern Bell Tel. & Tel. Co.	16.00
Davis Meter & Supply Co.	54.50
Preston Chemical Company	35.00
Weebey System	15.75
Tennessee Valley Electric Supply Co.	52.50
Orle Miller	19.20
Pat Wilkins	170.00
Rudolph Standard Service	57.97
Wilson Copeland	75.00
Social Security Revolving Fund	125.64
Charlie Ross	16.80
Mattie Lou Riley	20.00
City Light & Water Co.	159.73
Working Fund Account	32.45
City of Benton	23.81
TOTAL AUGUST, 1958	3,403.02

SEPTEMBER, 1958	
Zep Manufacturing Company	89.00
The Preston Chemical Company	52.10
Henry A. Petter Supply Co.	495.99
State Farm Insurance Company	23.19
Central Service Association	64.71
Ohio Valley Supply Company	7.30
Southern Bell Tel. & Tel. Company	16.40
Rockwell Manufacturing Company	87.78
Pat Wilkins	120.00
Federal Reserve Bank	104.70
Southern Division Republic Tank Company	1,265.50
Weebey System	3.12
City Light & Water Company	165.37
Weebey System	13.03
Working Fund Account	48.49
TOTAL SEPTEMBER, 1958	2,556.63

OCTOBER, 1958	
Department of Revenue	20.31
City of Benton	31.28
Social Security Revolving Fund	284.06
Director of Internal Revenue	72.40
Central Service Association	65.97
Henry A. Petter Supply Company	309.17
Ohio Valley Supply Company	2.45
Robert Larimer	106.20
Colonial Refining & Chemical Company	16.00
Southern Bell Tel. & Tel. Company	34.56
Long Concrete Company	7.73
Miller-Johnson Company	12.45
Benton Plumbing & Electric Company	23.89
H. A. Lassiter	13.65
Crawford-Ferguson Company	63.00
Delta Tool & Supply Company	3.55
Boyd Motor Company	54.00
Griffin Foundry & Manufacturing Company	63.10

Preston Chemical Company	36.00
Joseph G. Pollard Company	37.20
Davis Meter & Supply Company	61.51
Halston Equipment & Supply Company	7.72
Treas Lumber Company	35.23
Rockwell Manufacturing Company	463.19
Benton Wholesale	45.93
Joe B. Prince	45.93
Weebey System	45.93
City Light & Water Company	154.08
Working Fund Account	53.57
TOTAL OCTOBER, 1958	2,091.51

NOVEMBER, 1958	
Federal Reserve Bank	39.30
Henry A. Petter Supply Company	179.28
Ohio Valley Supply Company	84.60
Central Service Association	62.33
Southern Bell Tel. & Tel. Company	16.00
Crawford-Ferguson Company	60.25
Herman Kanatzer	30.00
The Preston Chemical Company	49.10
Phillips Chevrolet Company	31.40
Delta Tool & Supply Company	268.47
Miller-Johnson Company	2.03
City of Benton	24.68
Rockwell Manufacturing Company	536.32
City Light & Water Company	114.09
Federal Reserve Bank	25.70
Working Fund Account	29.93
TOTAL NOVEMBER, 1958	1,544.09

DECEMBER, 1958	
Southern Bell Tel. & Tel. Company	16.00
Central Service Association	60.35
Griffin Foundry & Manufacturing Company	92.40
Henry A. Petter Supply Company	436.53
North Side Salvage Yard	1.50
Miller-Johnson Company	9.85
City of Benton	10.52
Benton Plumbing & Electric Company	7.33
Kinney Appliance Company	102.29
Benton Wholesale	7.00
Treas Lumber Company	25.14
Toy Castleman	5.00
City Light & Water	173.19
Baker Lumber Company	12.60
Working Fund Account	33.35
Bank of Marshall County	2.06
TOTAL DECEMBER, 1958	989.97

JANUARY, 1959	
Southern Bell Tel. & Tel. Co.	15,413.64
Henry A. Petter Supply Co.	4,315.46
City of Benton	42,061.79
Western Auto Association Store	1.07
Miller Auto Parts	11.92
The Preston Chemical Company	31.50
Central Service Association	60.47
Davis Meter & Supply Company	29.93
Benton Tin Shop	7.50
Halston Equipment Company	77.00
Electric Rust-Proofing	139.00
Social Security Revolving Fund	123.69
Director of Internal Revenue	29.90
Kentucky State Treasurer	7.22
Weebey System	13.63
Union Gas Company	21.61
City Light & Water Company	164.63
Working Fund Account	20.10
Federal Reserve Bank	26.70
TOTAL JANUARY, 1959	1,057.09

FEBRUARY, 1959	
Henry A. Petter Supply Company	169.20
Rockwell Manufacturing Company	350.68
Preston Chemical Company	61.10
Central Service Association	59.88
Southern Bell Tel. & Tel. Company	16.25
Rudolph Standard Station	15.85
Crawford-Ferguson Company	6.33
City of Benton	19.36
Davis Meter & Supply Company	29.32
Service Oil Company	12.54
H. A. Lassiter	31.50
Miller-Johnson Company	1.20
Union Gas Company	21.61
City Light & Water Company	157.00
Working Fund Account	44.40
Central Service Association	150.00
Federal Reserve Bank	27.10
TOTAL FEBRUARY, 1959	1,173.21

MARCH, 1959	
Benton Service Station	1.00
Benton Plumbing & Electric Company	1.05
Rudolph Service Station	15.85
State Farm Mutual	23.19
Davis Meter & Supply Company	23.56
Henry A. Petter Supply Company	26.40
Preston Chemical Company	27.05
Central Service Association	60.41
Southern Bell Tel. & Tel. Company	16.00
Delta Tool & Supply Company	56.59
Rockwell Manufacturing Company	35.87
Zep Manufacturing Corp.	216.00
Miller-Johnson Company	5.98
City of Benton	19.37
Fleming Furniture Company	14.60
Mattie Lou Riley	20.00
Arnold Ligon Truck Line	11.70
Union Gas Company	20.33
City Light & Water Company	147.14
Earl Wiley	225.00
Working Fund Account	18.00
TOTAL MARCH, 1959	1,194.43

APRIL	
Social Security Revolving Fund	157.23
Department of Revenue	6.43
Director of Internal Revenue	33.00
Central Service Association	60.47
Benton Plumbing & Electric Supply Company	66.04
Peel & Holland	44.43
Miller-Johnson Company	44.43
Pat Wilkins	350.00
Cannelton Sewer Pipe Company	202.21
Service Oil Company	12.54
Tick Brothers	10.85
City of Benton	18.81
Henry A. Petter Supply Company	339.38
Preston Chemical Company	119.13
Herman Kanatzer	22.50
Rockwell Manufacturing Company	22.74
Southern Bell Tel. & Tel. Company	16.00
Union Gas Company	14.75
City Light & Water Company	119.13
Dixie Highway Express Company	13.03
Working Fund Account	42.93
TOTAL APRIL, 1959	1,641.99

MAY, 1959	
Federal Reserve Bank	47.00
Rockwell Manufacturing Company	451.22
Central Service Association	63.34
Griffin Foundry & Manufacturing Company	38.80
Hersey Manufacturing Company	4.06
Dycus Hardware Company	1.51
Morgan Trevathan & Gunn	31.42
Southern Bell Tel. & Tel. Company	16.80
Henry A. Petter Supply Company	500.00
City of Benton	20.13
Crawford-Ferguson	2.52
Miller Auto Parts	7.51
Miller-Johnson Company	71.35
Dixie Highway Express Company	3.00
Tennessee Plumbing & Supply Company	1,300.16
Joe B. Prince	8.00
Mrs. W. M. Johnson	14.29
Union Gas Company	9.73
City Light & Water Company	151.89
Working Fund Account	39.42
TOTAL MAY, 1959	2,832.15

JUNE, 1959	
Federal Reserve Bank	44.80
Preston Chemical Company	98.90
Adams Pipe Repair	54.00
Central Service Association	63.10



WED AT CALVERT—Ruth Ann McKim and Dr. W. J. Ashbrook are pictured after their wedding Aug. 15 at the Calvert City Presbyterian Church. She is the daughter of Mr. and Mrs. C. E. McKim of Calvert City. His home town is Greensburg, Ky. They will live in Louisville.

Letters to The Editor

Marshall Courier
Benton, Kentucky

Dear Mrs. Wyatt and Mr. Cross:
Enclosed is my check for \$2 for a six-month renewal of your paper. I found I just can't keep up with the happenings in Marshall County without it.

I spent Saturday afternoon with the 4-H's, Miss Colley, and the 4-H leaders. It was a happy experience to see so many Marshall County people here. I'm sure visiting Washington, D. C., has been an experience those youngsters won't soon forget.

Yours truly,
Norma J. Jones,
2922 S. Buchanan
Arlington 6, Va.

The Marshall Courier,
Benton, Ky.

Dear Sirs:
If men could be taught to see clearly their real interest to see afar the distant results of their deeds, to criticize and coordinate their desire out of a self-cancelling chaos into a purposive and creative harmony—this, perhaps would provide for the educated and sophisticated man the morality which in the unlettered relies on reiterated precepts and external control.

But if the government itself is a chaos and an absurdity, if it rules without helping and commands without leading, how can the individual in such a state be persuaded to obey the laws and confine his self-seeking within the circle of the total good? No wonder juveniles are delinquent! No wonder when

there is no thought, the crowd decides in haste and ignorance, to repent at leisure and in desolation... It is easier to take an aspirin or two, than to mend our ways.

Because of greed and luxury, men are not content with a simple life; they are acquisitive, ambitious, competitive, and jealous; they soon tire of what they have, and pine for what they have not; and they seldom desire anything unless it belongs to others. The result: encroachment of one group upon the territory of another, the rivalry of groups for the girls or for the resources of the soil, either of which result in war. And division.

Any ordinary city is in fact two cities, one of the poor the other of the rich, each at war with the other. A "bourgeoisie" arises whose numbers seek social position through wealth and consumption; they spend large sums of money on their wives, families, mistresses and what have you.

Out of this bourgeoisie aristocracy evolves the rulers of the state, but in many cases these are the unseen government. Then so-called statesmanship, which is the coordination of social forces and the adjustment of policy, which replaced by politics and the strategy of party and the lust for the spoil of office.

Every form of government tends to perish by excess of its basic principle. It also ruins itself by limiting too narrowly the circle within which power is confined. By this incantous took from him is restricted liberty—the advantage of every man would be in social and loyal conduct, then only clear sight would be needed to ensure peace and order and good will.

But if the government itself is a chaos and an absurdity, if it rules without helping and commands without leading, how can the individual in such a state be persuaded to obey the laws and confine his self-seeking within the circle of the total good? No wonder juveniles are delinquent! No wonder when

Al G. Bourassa.

LOOK AT THIS!

MEN'S SUITS

Special Group of Summer Suits. Regular \$35.00 Values!

\$14

ALL STRAW HATS... 1/2 PRICE

We Give FREE Tickets on 3 Autos to be Given Away at Purchase District Fair

FACTORY OUTLET STORE

South 6th Street Mayfield

City of Benton	11.71
Standard Oil Company	3.90
Service Oil Company	6.72
Peel & Holland	246.10
Benton Wholesale	7.00
Henry A. Petter Supply Company	314.09
Southern Bell Tel. & Tel. Company	17.70
David P. McNeely	375.00
Rockwell Manufacturing Company	134.54
Hayes Freight Line	3.72
Union Gas Company	1.75
City Light & Water Company	152.34
Arnold Ligon Truck Line	4.11
TOTAL JUNE, 1959	1,539.18

I, Frank Dunn, Treasurer of the Benton Water and Sewer System do hereby Certify that the foregoing statement is true and correct to the best of my knowledge and belief.

FRANK DUNN.

STATE OF KENTUCKY, SCT.—COUNTY OF MARSHALL.
Subscribed and sworn to before me a Notary Public by Frank Dunn, this 22nd day of August, 1959.
(SEAL)

C. L. Walker, Notary Public
My Commission Expires March 22, 1961.

Mrs. A. B. Fendley and daughter, Debbie, of Paducah, and Mrs. Inda Fendley Woods and daughter Carol Ann of Paducah were Thursday guests of Mrs. Fred Filbeck.

Mrs. Joe Walker, Mrs. Curt Noles and Mrs. Lonnie Odom of Route 5 were visitors in Benton Monday.

Mrs. Myrtle Hendrick Moss and Miss Patsy Hendrick were shoppers in day.

Mrs. Ella McNeely was a shopper in day.

Mr. and Mrs. J. B. Fendley, children of Paducah, were in the home of Mr. and Mrs. J. B. Fendley this week.

SHOP & COMPARE

CHANCE OF A LIFETIME

BIG DIAMONDS FOR LITTLE MONEY

NOW YOU CAN OWN FABULOUS

WORLD FAMOUS **Prism-Lite** DIAMOND RINGS

100% FULLY POLISHED EDGES

AT THIS FANTASTIC LOW PRICE

LOCKED SET

2 CARAT

Total Weight \$688.80

charge in convenient terms quickly arranged

OUR IRON WRITTEN GUARANTEES BINDS EVERY

The Diamond Store of Paducah

ROGER Jewelers

304 BROADWAY

Open Friday Night 'Til 8:30

Paducah,

Head - of - the - Class Bu

Billy the Kid Double W

SAFTEE TEXAS JEANS

Reg. and Slim Sizes

Huskie Sizes

Boys' SWEAT

Crew Necks Cardigans From

RUBBER RAINCOATS

Black or yellow with matching hood

Lay-A-Way a

CAR COAT

or **JACKET** \$8.95

Car Coats From

Boys' BRIEFS and T-SHIRTS 49c 3 for

GYM TRUNKS \$1.

We Cover The STUDENT BODY

Jule's

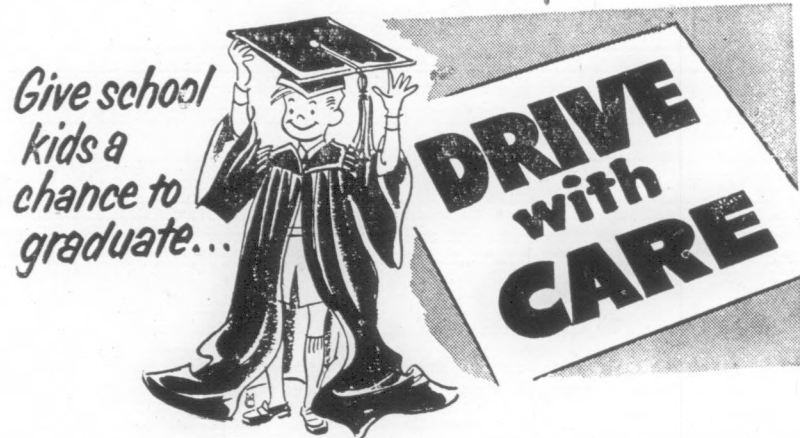
MEN'S & BOYS' SHOP

211 Broadway, Paducah, Ky

"If It's New—We Have It"

Drive with Care (SCHOOLS OPEN) Protect Our Children

NOW THAT SCHOOLS ARE OPEN-- THINK



STOP!

At All School Crossings



These Merchants, Business and Professional Men of Marshall County Urge You to Drive Carefully.

Penn Community Grocery
Highway 80, At Brewers

Strickland's Store
West Gilbertsville Route 1

Teague Shop Rite
LA 7-8352

Cornwell's Bus Station
Delicious Sandwiches

Martin Tractor & Implement Co.
Main Benton, Ky.

Pete's Grocery
Palma

Jonathan Creek Court
Route 5 — EL 4-4227

National Stores Corp.
Benton, Kentucky LA 7-3531

Chas. E. Story Construction Co.
Briensburg, Ky.

ARLIE ROSS, Distributor
D-X Sunray Oil Company

Watkins and Haltom
Earth Moving Contractors

Hutchens Bar-B-Q

Lampkins Buick Company
New and Used Cars

Bank of Marshall County

Benton Ky. Member F. D. I. C.

Marshall County Board of Education

Kinney Appliance Company

A. L. Franklin & Son

Shell Service Station Benton
14th and Main

Morgan, Trevathan & Gunn Insurance Agency

Florence Gibbs
REAL ESTATE Highway 641
Telephone FO 2-4211

Joe Darnall, Agent
Standard Oil Company

Northside Salvage Shop
202 Main

Bank of Benton
Member FDIC

Long Concrete Company
Blocks and Ready Mixed Concrete
BENTON and CALVERT CITY

Ervin Poe, Palma

Hotpoint Appliances and RCA Television Sets

Benton Tin Shop

101 West 10th Street Dial LA 7-6141

Morgan's

Back to School with Buster Brown Shoes
Campus Sweaters Levi's and Buccaroos

Birmingham Milling Company

Highway 641, Two Miles North of Benton

Burd Plumbing & Heating
Licensed Gas Installer

Tanner I. G. A. Super Market
8th and Main LA 7-5971

Downing's Texaco Service
716 North Main Phone LA 7-4901

Crawford-Ferguson Company

O'Daniel's Grocery

203 East 7th Phone LA 7-9461

Kinney Motors

Your Friendly FORD Dealer

John Ed Barnes Grocery
At Pleasant Grove

Wilson Henson, General Contractor

Houser Shell Service Station
506 Main LA 7-9481

West Ky. Rural Electric Co-Op
Mayfield, Ky.

Joan Gatlin Is Married

In a candlelight ceremony solemnized Friday, Aug. 21, at 6:30 p. m., Miss Patricia Joan Gatlin, youngest daughter of Mrs. Faye Gatlin of Benton and the late Jack Gatlin, became the bride of Max Ryan King, son of Mr. and Mrs. Ryan King of Draf-fenville.

The double-ring ceremony was performed at the Briensburg Methodist Church by the pastor, Rev. Orville Easley.

A program of nuptial music was presented by Miss Marilyn Wyatt.

The bride wore a streetlength dress of white organza and eye-let with a full skirt. The bodice featured a scooped neckline and short sleeves. A purple orchid was pinned at her shoulder.

Miss Pat King, sister of the groom, was the bride's maid of honor. She was attired in white linen sheath dress featuring beige embroidery. She wore a corsage of yellow daisy pom-poms.

Best man was Jimmie Ray Smith, cousin of the bride. Ushers were Tommy King, brother of the groom, and Jackie Gatlin of Livonia, Mich., nephew of the bride.

Mrs. Gatlin, mother of the bride, wore a navy shantung dress with white accessories. Her corsage was of white carnations.

Mrs. King, mother of the groom, wore a powdered blue, lace trimmed linen dress with matching accessories. Her cor-sage was of pink carnations.

After the ceremony, a reception was held at the home of the groom's parents for members of the families and close friends. The couple went to the Smoky Mountains on their wedding trip and will be at home after Fri-day, Aug. 28, in Draf-fenville, where the groom is employed with his father in the U-Tote-Em Super Market.

Mrs. Jack Thompson Complimented At Household Shower

Mrs. Jack W. Thompson was honored Tuesday night with a household shower at the home of Mrs. R. C. Riley in Benton.

Co-hostesses were Mrs. Hal Stevens and Mrs. Alfred Frank-lin, Jr.

Arrangements of roses and dahlias were placed throughout the rooms.

Miss Jo Beth Barnes served punch and cake to the guests.

Subscribe To The Courier

Carol Johnston Hostess At Party For Miss Gipson

At 5:50 p. m. last Thursday, Aug. 20, Miss Carol Johnston was hostess at a welcoming party for Miss Judy Gipson of Detroit, Mich.

Miss Gipson will live in Ben-ton and will attend Benton High School this fall.

A potluck supper was served on the lawn, and later the guests attended a movie or went skat-ing.

Those present were Jerilyn Clayton, Sharon Chandler, Jo Beth Barnes, Judy Fleming, Janet Nell, Jonda Gilliam, Phyllis Bearden, Paula Yates, Brenda Rose, Paula Kinsey, Sandy Yancey, Ada Asher, Jean Gurley, Brenda Darnell, Mickey Wyatt, the hostess and the hon-oree.

Rinnie King, son of Mr. and Mrs. Derrell King underwent major surgery at the Murray Hospital last week and is re-covering nicely.

Mr. and Mrs. Alfred Joyce of Cuyahoga Falls, Ohio, have ar-rived at their home on Benton Route 6 to visit with and enter-tain friends and relatives for about three weeks. Mrs. Joyce is the former Nina Nichols, daughter of the late Mr. and Mrs. W. W. Nichols.

HONORED AT HAY RIDE

Miss Rena Fay Hall, daughter of Mr. and Mrs. Ray Hall of Cal-ver City, was honored at a hay-ride and weiner roast Thursday evening, Aug. 20, from 5 to 9. The occasion was in celebration of her 12th birthday. The roast was held at the Ky. Dam Park.

Invited friends were Sharon Herring, Pat Coursey, Faye Stratton, Sue Guffey, Paula

Mathis, Rita Lane, Janice Angle, Pam Morgan, Chyrrill Dexter, Rita and Ronnie Matlock, David Puckett, Dale Strader, John Morris Draffen, Jimmie Lee, Sonny English, Sammy Devine, Gary Robertson.

Games were played and win-ners were Sharon Herring and John Morris Draffen. Assisting with the games were Dean De-vine and Mitzi Hall.

Linda Calloway Is Complimented

Mr. and Mrs. Desmond Galloway of Benton surprised their daughter, Linda, with a birthday supper on Aug. 12.

Linda received several nice gifts. A delicious meal was served to the following guests:

Mrs. Genoa Filbeck, Mr. and Mrs. Joe Galloway and Pattie Lou, Mr. and Mrs. Kenneth Galloway and Kathy and David, Mr. and Mrs. Lucile Galloway, Mrs. Florence Nunley, Mrs. Loretta Galloway and Mr. and Mrs. Bill Green.

Linda also invited several friends to her home during the afternoon. They ate hamburgers and went skating. Invited were

Dianne West, Lynn, Kay Jennings, Casey and Janice Jones.

Pete Krachun is working in the store at the home of Mrs. Lee

Presbyterian Circles At Calvert Selwitz Is

of the United Presby-terian met Tuesday at the home of Mrs. Lee

H. Alford conducted the meeting and pre-sented a Bible study

program, "Ever Widening Horizons" by Mrs. Otis

and following this was served to Mes-sieurs, Alford, Carl Mc-

Arthur, Arnold, Hunter, W. Hampton and the

Hellstrom was hos-essing the night to Circle 2.

study, "Receiving the Blessing of the Spirit" was

presented by

McFarland.

chairman, Mrs.

conducted the

meeting.

lemonade were

the guests.

attending the meeting

and those

hostesses Mesdames

James Kun-

ordian, Powell, Robert

Hall.

major subjects

CAMPUS

find Reece's to be a most

away school for the first

will be correct and in

his choice. Shop Reece's

Reece's for a back to college

and sport shirts, dress shirts,

pursewear, PURITAN Ban-

FIELD FOUR - STAR suits,

REL or CAVALIER neckwear,

all shoes; RESISTOL hats,

SWANK jewelry; com-

ing featuring Style-Mart Tux-

underbunds.

retired... another big ship-

st Kentucky's Leading

RED TAG

Sale

HUGE

TRADE-INS!

Pay \$3

PER WEEK

Red Tag

OG 16" NORGE GAS DRY

Reg. \$249.95. Red Tag

AC-20 BIG 20 CU. FT. NO

Reg. \$449.95. Red Tag

OG 18" 30" NORGE GAS RA

Reg. \$199.95

OG 30" NORGE ELECTRIC

Reg. \$219.95. Red Tag Price

OG 8 CU. FT. NORGE REFR

Reg. \$219.95. Red Tag Price

ALL-NEW 1960 NORGE

AND MATCHING DRYER.

Reg. Price \$669.90. Red Tag

OG 400 NORGE COMBINAT

Reg. \$539.95. Red Tag Price

Above Prices

BIG TRADE-IN A

NO MONEY DOWN! 2

Home

Kentucky Ave., Paducah

HUNTER'S HEADQUARTERS

12, 16, 20 Ga. Shell Belts \$1.25 - 22 Cal. Belts \$1.25

Heavy Canvas Army Surplus **GAME BAGS \$1.00**

Shell Vest \$2.49 Heavy Duty—Rugged—Tough Do Not Confuse With Others

Game & Shell Vest \$5.95

COATS \$8.95 PANTS \$7.95

Recoil Pads	49c	Cleaning Rods	49c	Vacuum Bottles
Army Gun Oil	10c	Fire Starters	25c	Pint \$1.85
Bore Cleaner	10c	Canned Heat	10c	Folding Stools
				Qt. \$2.95
				98c

Rust on Firearms? Put This In Your Gun Case or Chest **SILICA GEL 69c**

MOSQUITOES BAD? Head Nets 25c Nets for Cots \$2.95

Army Repellent 25c

Limited Quantity **Sample Shot Guns at 10% to 20% Off**

Third and Kentucky **VERY DAY COUNTRY BOY STORES** Phone 5-5665 Paducah

Every Girl Wants The "Best Dressed Look" For College!

Come in and preview our Fall '59 collection of fashions which will star on every campus in America. You will find what is new in college apparel.

THE BARDLEY SUIT

in Monotone Wool Tweed

The Ivy League suit of easy elegance with the soft semi-fit you love. Very city-wise with its perfect tailoring and important details.

This Season's Favorite Color... CAMEL

\$59.95

The Brooks Shoppe

119 West Broadway Mayfield, Ky.

THERE'S ROOM FOR Everybody IN THIS...

9-Piece Living Room!

SPECIALLY PRICED TO PAMPER Your BUDGET

2 SMART LAMPS

BIG 92-INCH SOFA

2 STEP TABLES

COFFEE TABLE

LOUNGE CHAIR

YOUR CHOICE OF COLORS

STORE HOURS
MONDAY & FRIDAY 'TIL 9 P.M.
WEEK DAYS 'TIL 6
SUNDAY 1 TO 6

SHOULD SELL FOR \$249.50

9-PIECE LIVING ROOM OUTFITS!

INCLUDES—

- 2-Piece Living Room Suite
- 2 Step Tables
- Cocktail Table
- 2 Table Lamps
- TV Chair
- Lovely Smoker

OUR PRICES SPEAK FOR THEMSELVES

139⁸⁸

NO MONEY DOWN

Here is a full room of quality furniture at such a ridiculously low price, so low you must see it to believe it. Massive modern suite in your choice of decorator colors. Come in, and see it set up on our floor.

CARPET

3 ROOMS

30 Sq. Yds. **\$60⁰⁰** Reg. 120.00

Rayon Tweed

In twelve foot widths. Lovely beige tweed pattern. Rubberized backing. Doesn't need binding.

\$200 Sq. Yd. Reg. \$4.00

ALL WOOL WILTON

12-Ft. Width **\$6⁰⁰** Sq. Yd.

The finest grade of carpet loomed. Imagine, all wool Wilton carpet, for what you would expect to pay for viscose—Sells most places for 10.95 sq. yd.

GOSSIP BENCHES \$1375

SEA FOAM GREY 6-PIECE BEDROOM OUTFITS \$120⁸⁸

INCLUDES—

- Double Dresser, Chest, Bookcase Bed
- Box Springs, Mattress & Lamp

Save \$88.97 on this lovely bedroom outfit. Imagine a complete bedroom at this price. Set up in our display room.

YOUR CHOICE --- BLACK--BEIGE--BROWN SECTIONALS \$154⁴³

3-Piece As Shown

Goodyear foam rubber cushions. Heavy durable nylon covers. Smart modern style.

Should Sell For \$239.95

Paducah Furniture Mart

GIANT WAREHOUSE SHOWROOMS

IN THE LOW RENT WAREHOUSE DISTRICT

Second & Washington Paducah, Ky.

Open Sunday From 1 P. M. to 6 P. M.

EASY TERMS
NO MONEY DOWN
24 MONTHS TO Pay!

FREE PARKING
FRONT OR REAR OF STORE

Personal...

German Circles Calvert Selwitz Is

Pete Krachun is working in the store at the home of Mrs. Lee Selwitz. Tuesday afternoon he was in a car accident. Mr. and Mrs. Neal Selwitz have returned from a vacation trip to where they visited.

Alford conducted a meeting and pre-Bible study. Mrs. Widening gave by Mrs. Otis following this was served to Messrs. Alford, Carl McFarland, Hunter Arnold, Hunter W. Hampton and the Helstrom was hostess to Circle 2. "Receiving of the Spirit" was given by Mrs. Edna McIntyre. Mrs. Edna McIntyre was presented by McFarland.

Chairman, Mrs. Selwitz, conducted the meeting. Lemonade was served to the guests attending the meeting. Hostesses and those present were Mesdames Gordon, James Kunkin, Powell, Robert

DUKES CHILDREN HOLD COOK-OUT IN BACKYARD

Jeffery and Reyn Dukes held a cook-out in the back lawn of their home on Cherry Street Saturday, Aug. 22, from 5 to 6:30 p. m. Their guests were neighborhood friends and playmates. Hot dogs, marshmallows, koolade and watermelon were served by Mrs. Robert Dukes, assisted by Mrs. J. B. McFarland, to Allen Nelson, Larry Mitchell, Douglas Frevet, David Robb, Mike Kunknecke, Jimmy Tomsle, Billy and Jimmy Smith, Andy and Eddie McFarland, Tommy Pfeiffer, Jeffrey, Reyn, Elizabeth and Laura Dukes.

Officers Elected By WMU Of Calvert City Baptist Church

The WMU of the Calvert Baptist Church held a called meeting Monday, Aug. 24, at the church. Ten were present for the meeting. Mrs. Edna Oakley presided and gave the reading from the 12th Chapter of Romans. Mrs. Stella Devine gave the opening prayer.

New officers were elected for the coming year. The installation will be held Sept. 25. A social hour will follow the service. New officers are:

President, Mrs. John Goheen; first vice-president, Mrs. Stella Devine; second vice-president, Mrs. Newt Coursey; treasurer, Estelle Ham; secretary, Mrs. May Hopgood; prayer chairman, Mrs. Irma Davis; circle chairman, Mrs. Kenneth Capps; community missions, Mrs. Thresa Ruggles; publicity, Mrs. Stella Devine; social, Mrs. Edna Oakley; YWA leader, Mrs. Lucille Cavanaugh; GA leader, Mrs. Shirley Pace; sunbeam, Mrs. Freeman Travis; publication, Mrs. Nell Morehead.

MRS. LUTHER DRAFFEN IS HONORED AT LUNCHEON

Mrs. Luther Draffen was honored with a surprise birthday luncheon Aug. 20 at Boswells in Paducah.

The ladies presented Mrs. Draffen with a beautiful orchid corsage and a lovely costume jewelry set.

Present were Mesdames Russell Badgett of Grand Rivers, James Turner, Vernon Cavanaugh of Sledge Creek, G. H. Alford, Leroy Keeling, Carl McKim and Herman Kunknecke of Calvert City. After lunch, the ladies spent the afternoon shopping in Paducah.

Subscribe To The Courier

SAVE CASH at HANCOCK'S

Fresh Home Dressed

HENS LB. 29c

U. S. Inspected

FRYERS LB. 27c

U. S. GOOD BEEF

CHUCK

ROAST lb. 39c

FIRST CUTS

Swift's **TOPPY BACON LB. 35c**

FREE! FREE!

NEW 1960 WHITE

SEWING MACHINE

Nothing to buy — Just Register — To be given away Sat. Sept. 12th at 5 p. m.

You do not have to be present at drawing to win.

COCA COLA or PEPSI COLA

24 BOTTLE CASE 69c

With the purchase of \$5.00 or more order

Del Monte — Halves or Slices **PEACHES Large No. 2 1/2 Can 25c**

Tenderleaf **TEA 1/4 lb. bag 35c Lb. Box 69c 55c**

FOLGERS **INSTANT COFFEE Large 6 Oz. Jar 79c**

Sparetime Frozen, Meat Loaf, Turkey, Fish

TV DINNERS

EA. 39c

No. 1 Red

POTATOES 10 LB. BAG 39c

Fresh

CELERY Large 3 Doz. Size Stalk 10c

FRESH

CARROTS

Cello Bag

10c

Fresh Red

GRAPES

LB. 10c

Fancy Winsap

APPLES

4lb. bag 39c

COUPON SPECIAL

Dixie

BISCUITS

WITH THIS **6 for 39c**
Coupon At

Hancock's Food Centers

Expires Sat. Nite, Aug. 29

COUPON SPECIAL

Swift' Park Lane

ICE CREAM

WITH THIS **1/2 Gal. 39c**
Coupon At

Hancock's Food Centers

Expires Sat. Nite, Aug. 29

COUPON SPECIAL

MIRACLE

WHIP

WITH THIS **Qt. 39c**
Coupon At

Hancock's Food Centers

Expires Sat. Nite, Aug. 29

COUPON SPECIAL

A-1 TOILET

TISSUE

WITH THIS **4 for 19c**
Coupon At

Hancock's Food Centers

Expires Sat. Nite, Aug. 29

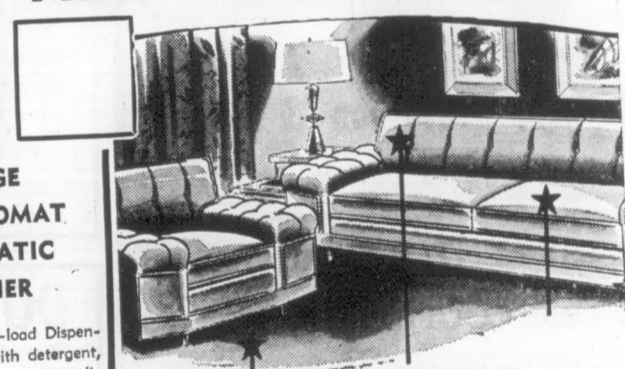
major subjects for your CAMPUS-BOUND WARDROBE

Reece's to be a most complete college shop. The young man who is away to school for the first time can be assured that the apparel he selects will be correct and in keeping with current fashion trends of the college choice. Shop Reece's NOW for your college wardrobe.



Reece's
STYLE-MART STORE
7th & Broadway
CH 7-3780
Mayfield, Ky.

August Clearance Sale To Make Room For Fall Merchandise PRICES REDUCED UP TO 40%



9-Piece Living Room Group

Reg. \$236.21

2-Piece Foam Cushion Living Room Suite, 2 Step End Tables—1 Cocktail Table, 2 Lamps, 2 Pillows. Complete Group, Red Tag Price... **\$179.88**

9-PIECE BEDROOM SUITE

Reg. \$245.38

Bookcase Bed, Double Dresser, Chest, Box Springs, Innerspring Mattress, 2 Lamps, 2 Pillows. Red Tag Price, All For... **\$169.88**

5-PIECE DINETTE SET

Reg. \$59.95

Red Tag Price... **\$49.88**

PULL-UP CHAIRS

Reg. \$14.95

Red Tag Price... **\$12.88**

TOSS PILLOWS

Reg. \$1.98

Red Tag Price... **48c**

Lamps Reduced! End Tables! Cocktail Tables! Odd Beds, Full or Twin Size

G. E. Electric Blankets 1-3 Off!

Prepare for winter. Just received first shipment of gas and coal heaters... in time for Red Tag Sale. Save Money!

Above Prices With Trade
BIG TRADE-IN ALLOWANCES!
NO MONEY DOWN! 24 MONTHS TO PAY!

Home Appliance & Furniture Co.

Dial 3-7381

30 Kentucky Ave., Paducah, Ky.

HANCOCK'S
H. Food Center

"Where Prices Are Born... Not Raised"

TWO BIG STORES

2025 Cairo Road 2193 Bridge Street
PADUCAH, KY.

Eradicating Termites
The Destructive Termite
FREE INSPECTION
SAM KELLEY
Phone PL 3-3000
Murray
KELLEY'S Pest Control

Nationally Advertising
Fashions
The
BROOKS
Shoppes
119 West Broadway

WANTED
For Iron, Metal, etc.
conveniently located
Paducah, Ky.
9963
Metal Division

OF ALL KINDS
than and G...
Agency
BENTON

KINS
COMPANY
AND SERVICE

LOAN ON
Rings, Radios, TVs, etc.
Rifles. We also make

Specialty
Redeemed Items
NANCE CO.
Paducah

OW!
cut length.
for 50 years
items in hardware &
shop with Gift
Appliances

Bros
Smithland Store
City Hardware Company

INEERS
of Gas Installation
EMBER —
HNSON CO.
Complete Line Of
• Gas Space Heaters
• Gas Cook Stoves
Industrial Piping Connections
and Guarantees Our Products

HNSON CO.
Less in the Long Run
CALVERT

FUNERAL IS CONDUCTED FOR MRS. MARY STYERS

Funeral services for Mrs. Mary Styers, who died Aug. 19 at her home on Symsonia Route 1, were held Friday at the Clark's Rivers Baptist Church. Rev. Herman Lutter officiated. Burial was in the church cemetery. Pallbearers were Lee Joe and Earl Wood, Albert Jones Jr., Victor Davis and Clay Carter.

CARD OF THANKS

We wish to thank all of our friends and neighbors for all kindness extended to us at the time of the death of J. H. Brown. We especially thank Dr. McClain and the staff, R. J. Burpee for words of comfort, donors of flowers, Filbeck and Cann Funeral Home. May God bless you all. Wife and children.

Subscribe To The Courier

MRS. ELAM IS PROGRAM LEADER AT WSCS EVENT

The Calvert Methodist Church WSCS met Monday afternoon, Aug. 24, at the church.

Mrs. W. E. Elam, program leader, gave the devotional on the topic "Local Church." Mrs. J. F. Moore led in prayer. The lesson "Faith With Works, The Local Church," was presented by Mrs. Claud Dees. Mrs. J. F. Moore, Mrs. Will Peck and Mrs. Pearl Smith. The president, Mrs. J. P. Lee, presided over the business meeting. Minutes were read by Mrs. Estelle Sewell and roll was called by Mrs. Doyle. Those present were Mesdames Will Doyle, Will Peck, L. L. Egner, J. F. Moore, W. B. Elam, Pearl Smith, J. P. Lee, Carl Dees and Estelle Sewell. Henry Downing of Route 4 was a business visitor in Benton.

Farm Leader From Nicaragua Visits In Marshall County

Rene Gutierrez, an International Farm Youth Exchange student, ended a three-week visit to Marshall County Monday. Rene, 23 years old, and a county agent in Nicaragua, arrived in this county Aug. 4 to observe agricultural practices. He lived in the George Little home from Aug. 4 to Aug. 12, and then stayed with the Carl Wade Chesters from Aug. 13 to Aug. 24. He went from here to Lexington and from there will go to Ludlow, Ky., where he will stay until Oct. 3. Then he will go to Washington, D. C., and from there to his home in Nicaragua. Rene cut tobacco at the Chesters farm, and made himself generally useful. He said he enjoyed his visit in Marshall County very much and learned a great deal about our farm life. Before coming to Kentucky, he viewed farm practices in Oregon. He was the only IFYE student from Nicaragua to visit Kentucky.

Derrell King and Hyman King have purchased the Bill Grimmett property on Benton Route 3. Hyman King and his family have moved to the house on the property. Derrell King plans to build a house in the near future there.

Mrs. Ralph Morris Hostess To Group Of Presbyterians

The executive board of the United Presbyterian Women of Calvert City met Aug. 24 in the home of Mrs. Ralph Morris.

Opening prayer was given by Mrs. Otis Fortner. Mrs. Richard Hampton con queted the business meeting. Minutes of last board meeting were read by Mrs. R. Morris.

The fall retreat will be held Oct. 10 at the Presbyterian Camp and Conference Grounds at Grand Rivers. The hours of the retreat are 10 a. m. to 3 p. m. Plan ahead to attend. Present for the meeting were Mesdames Robert Arnold, C. H. Alford, Frank Tommie, Edwin McIntyre, Douglas Foster, Richard Hampton, Otis Fortner, J. B. McFarland and Ralph Morris. Delicious ice-box dessert and coffee were served the guests.

CALVERT LOCALS

Rev. and Mrs. Harry MacCall and sons are on a vacation trip to Louisville, where they will visit with Mrs. MacCall's parents, Mr. and Mrs. Jones. From there they will fly to New Jersey to visit his parents, Mr. and Mrs. H. MacCall Jr.

Mr. and Mrs. Robert Carroll and children spent the weekend in Evansville visiting with her family. Mr. Carroll made a business trip from there to Cleveland.

land.

Mr. and Mrs. Nelson Cherry and children, Mrs. L. L. Egner and Mr. and Mrs. Coleman Hawkins attended the wedding of Betty Shemwell - Howard Hawkins in Mayfield last week. Coleman Hawkins was his brother's best man.

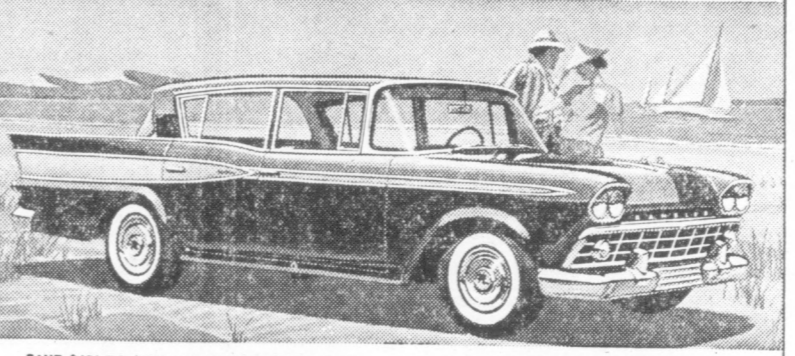
The C. F. M., of St. Pius Tenth

Catholic Church met Monday evening, Aug. 24, in the home of Mr. and Mrs. Art Masse. He was in charge of the discussion and lesson. Present were Mr. and Mrs. Robert Klein, Mr. and Mrs. Bob Schmidt, Mr. Ralph Jean and Rev. Fields of Paducah and Mr. and Mrs. Masse. A social hour followed the meeting.

The section around Fairdeal had good 30-minute rain Friday afternoon.

If the numbers on your Courier opposite your name are 9-59 your time has expired and time for another payment of a year's subscription. Subscribe To The Courier

SAVE AT RAMBLER'S SALES SUCCESS BONANZA



SAVE \$131 TO \$209 ON SEDANS, HARDTOPS
Based on manufacturers' suggested prices of comparable '59 models of other leading makes. Save still more with our Success Bonanza trade-in allowances.

SAVE UP TO \$176 ON RESALE VALUE
Rambler consistently brings highest resale of all comparable models according to both N.A.D.A. Official Used Car Guide and Redbook National Market Reports.

JUST LIKE PUTTING CASH IN YOUR POCKET! HURRY IN AND STRIKE IT RICH!

LAMPKINS RAMBLER CO. 1209 So. Main

(Back-To-School)

BOYS SALE

OPEN ALL DAY THURSDAYS

BOY'S SHORT SLEEVE SPORT SHIRTS
Plaids and Stripes, Reg. and Ivy Styles
Sizes 6 - 14
\$1.00

BOY'S WESTERN JEANS
Made From 13 3-4 O-z White Bark Denim
Sanforized - Sizes 6-16
\$1.98

BOY'S LONG SLEEVE SPORT SHIRTS
SHORT SLEEVE — WASH 'N WEAR
Checks and Stripes - Sizes 6-16
Reg \$1.98 to \$2.98 Values
\$1.59-2 for \$3.00

BOY'S LONG SLEEVE KNIT SHIRTS
New Colors and Styles
Sizes 6 to 16
\$1.98

BOY'S FANCY & SOLID COLORS SOCKS
Size 7 - 10
4 pr. \$1.00

BOY'S WESTERN JEANS
Denim Sanforized
Slim and Reg. Size
5 - 16
\$1.98

BOY'S STRETCH NYLON SOCKS
Solid or Fancy Colors
39c pr.
BOY'S 3 pr. \$1.00

BOY'S HEAVY ARGYLE SOCKS
Reinforced Heel and Toe
Sizes 7 - 10 1/2
59c pr.

BOY'S SPORT - TEX KNIT BRIEFS
Full Cut, Reinforced at legs with nylon to prevent stretch.
Size 6-16
69c each

BOY'S TEE SHIRTS
"Fruit-of-the-Loom"
WHITE
Reinforced Neck to Prevent Stretching
Full Cut - Sizes 4-16
49c each

BOY'S KNIT BRIEFS
Sanforized - Full Cut for comfort and perfect fit!
Sizes 2-16
39c 3 for \$1.00

BOY'S KNIT BRIEFS
"Fruit-of-the-Loom"
Reinforced Leg opening
Sanforized, Full Cut
Size 2 - 16
49c each

BOY'S LONG SLEEVE KNIT SHIRTS
Made from 100% Acetone - Fully Washable
Various Colors To Choose From - Size 6-18
\$2.98 ea.

BOY'S STRIPED WESTERN JEANS
Fused In Double Knees guaranteed not to peel out.
Slims and Regulars - Size 6-12
\$1.98

BOY'S WESTERN JEANS
by LEVI. Vat dyed, sanforized. Permanently fused in double knees guaranteed not to peel out.
Slims - Regulars Size 6-12
\$2.98

BOY'S BEDFORD CORD and POLISHED COTTON WASH 'N WEAR SCHOOL TROUSERS
Ivy and Continental Models
Slim - Reg. - Huskies
Size 6-18
\$3.98

BOLO SHIRTS
Short Sleeve - Sanforized - Neck Reinforced with Nylon to Prevent Stretching
Solid and Fancy Colors
Sizes 4 - 16
\$1.00

Western Jeans
Made from 13 1/2-oz. coarse weave denim, well constructed, bar-tacked or riveted at points of strain.
Huskies 6-16 .. \$2.98
Regular 4-12 .. \$2.49
Slims 14-16 ... \$2.98

BELK-SETTLE CO.

OPEN ALL DAY THURSDAYS MURRAY, KENTUCKY

Mystery Farm

Do You Know Whose Farm This Is?



If You Identify This Farm Correctly You Get Free One Year's Subscription To The Courier And Also Two Free Tickets To The Benton Theatre

This Farm was not Identified Last Week

This Farm Was Not Identified by Anyone SPONSORS OF THIS AD ARE:

- | | |
|--|---|
| BANK OF BENTON | RILEY MOTORS
Your Mercury - Edsel, Evinrude and Fablas Dealer |
| Long Concrete Co. | Bank of Marshall County
Your Friendly Bank |
| BIG N
82 Percent Nitrogen Fertilizer | JOE DARNALL
Standard Oil Agent |
| CO-OP STORE
Your Co-operative Dealer in Seeds, Feeds & Fertilizers | Kinney Appliance Co.
Main Street, Benton
Motorola Washers — Zenith TV |
| West Kentucky Rural Electric Co-operative Corporation | Downing Texaco Station
8th and Main, Benton
Goodrich Tires - Texaco Products |
| D-X Sunray Oil Co.
Arle Ross, Distributor | BOYD MOTOR CO.
Ferguson and International Tractors
DeSoto-Plymouth Automobiles |
| LAMPKINS
Buick-Rambler Co. | C. L. Walker, Agent
Farm Bureau Insurance Co.
City Hall Benton |
| RAY'S BODY SHOP
101 West 6th Street, Benton
Ray Hulon Smith, Owner | Linn Funeral Home
Air Conditioned Ambulances
807 Main Phone LA 7-2921 |
| Filbeck & Cann
Funeral Home
All Ambulances Air Conditioned and Equipped With Oxygen
Phone LA 7-2001 or LA 7-2001 | SERVICE OIL CO.
Your Shell Jobber
Phone LA 7-7715 Benton, Ky.
Guy McGregor |

Mrs. Harry Hurley has returned from Baltimore, Md., where she visited at the bedside of her daughter, Mrs. Francis Short who had undergone surgery. Galen Smith of Hardin was a business visitor in Benton Friday and while here renewed his subscription to the Courier.

State Fair Horse Show Will Attract Best In The Nation

When the bugler summons the horses into the ring for the Kentucky State Fair Horse Show, Sept. 14-19, he will beckon more than two million dollars worth of horse flesh to perform for Kentuckians gathered for the festive occasion.

Last year's World's Champion Show attracted horses valued collectively at \$2,072,000 — and this year, show manager Carl Garner, Shelbyville, Ky., expects to get entries from stables whose horses have increased in value as a result of major victories won at the country's biggest shows this year.

Opening night of the show, Monday, Sept. 14, the ten-event card will feature the \$2,500 stake for five-gaited stallions. This stake is expected to draw entries from stallions valued at

more than one-hundred thousand dollars.

Each night's program, Monday through Saturday, carries a feature event which will attract the high-priced horses, but every class in the show will feature the greatest horses in the nation. Virtually every major stake winner in the country will be vanned to Louisville to compete in the

World's Championship Kentucky State Fair Horse Show.

Mrs. Eleanor Noles and daughter of Route 7 were shoppers in Benton Friday and while here resubscribed for the Marshall Courier.

Mr. and Mrs. J. W. Creason of Route 3 were Friday shoppers in Benton.

THANKS

In behalf of the Benton Band Boosters Club and for the members of the Benton High School Band who so proudly wear the uniforms, we wish to express a great big THANKS to the wonderful merchants and professional people who helped us in our recent drive to secure funds for payment of the uniforms.

forms.

Our drive is completed although we have not completely paid for same. To date we have received a total of \$696.50. Of this, \$596.50 was collected by the drive and \$100.00 was given by the Benton Lions Club. We sincerely appreciate the efforts of this fine active civic club. I believe this is the money they

made on a cake walk program. To those that did the million. Without your help we could not have succeeded. To everyone who had a part in this program, we appreciate your help, realizing cooperation of all was necessary for the success of the program.

John W. Gilliam, Pres.

BUG TROUBLE?



If you have bugs and can't get rid of them, call us and we will rid your place with a money back guarantee. We use the best chemicals money can buy. With each Termite job we will give you FREE one year's protection against bugs... and five to fifteen years guarantee against Termites — and a Bond with each job.

LICENSED, INSURED AND BONDED — Sure Protection —

W. D. KEELING

Termite and Pest Control

129 Woodward St. Paducah Call 2-2157

—FREE INSPECTION TO ALL—

for a Brighter Home this WINTER...

WALLPAPER

Want a refreshing change of scene? Let new wallpaper work its wonders in your home. We have the latest designs and colors to harmonize with any decorative motif and bring out the full beauty of your furnishings. You'll be delighted with the results. For very little money, you can give your home a smart "new look!"

100 New Patterns Just Received Priced Right!

Flank Bros
HARDWARE • PAINTS • WALLPAPER
Paducah Kentucky

PADUCAH JUNIOR COLLEGE

707 Broadway, Paducah, Ky.

Telephone 5-5483

Fully Accredited

by

The Southern Association of Colleges and Secondary Schools

REGISTRATION

September 4-5, 1959

Students may be counseled and registered during regular office hours, 8 to 3 weeks days, 9 to 12 Saturdays or 6 to 7 P. M. Wednesday evenings.

The following courses are tentatively scheduled for the Fall term:

Engineering Math.	Child Growth
Algebra 101 to 102	Introduction to Education
Calculus	Art Appreciation
Math. of Finance	Public School Music
Accounting, Beginning and Advanced	Health and Hygiene
English Composition	Chemistry
English Literature	Invertebrate Zoology
Spanish 1 and 11	Botany
French 1 and 11	Qualitative Chemistry
Speech	Engineering Physics
European History	Plane Surveying
American History	Engineering Drawing
American Government	Typing, Beginning and Intermediate
Sociology	Shorthand 1 and 11

Contemplated Night School offerings are:

Algebra 101 and 102	Art Appreciation
Math. of Finance	Economic History
Analytic Geometry	American Government
English Composition 101 and 102	Constitutional Law
Business English	Industrial Psychology
World Literature	Physics 105 (Electronics)
Speech	Industrial Electronics
Children's Literature	Qualitative Chemistry
French or Spanish 1	Typing, Beginning and Advanced
Child Psychology	Shorthand 1 and 11
	Accounting, Beginning and Advanced

SATURDAY MORNING CLASSES

Engineering Drawing	Plane Surveying
Public School Music	

Save \$1,000 to \$2,000 A Year



FOOD VALUES

eat better

pay less

Field's Tender

HAMS

SHANK PORTION

LB.

39

BUTT PORTION

lb.

49¢ CENTER SLICES

lb.

Swift's Toppo Sliced

BACON

lb.

35

Field's Tender

WEINERS

lb. Pkg.

49¢

Field's Pure

PORK SAUSAGE

lb.

Field's

JUMBO BOLOGNA

pound

35

Morton's Fresh Frozen

MEAT PIES

2 for 49¢

Star Kist G. L.

TUNA

Can

Armur's Vienna

SAUSAGE

24 Oz. Cans

Fluffo

SHORTENING

3 LB. CAN

59

25 FREE TOP VALUE STAMPS

With Purchase of Our Special

TEA

1/2 lb. Box

49¢

Ballard or Pillsbury

BISCUITS

Can 9¢

Old Judge

INSTANT COFFEE

New Giant Size

\$1.19

Blue Bonnet

OLEO

lb. 27¢

Miracle Whip

Salad Dressing

Qt. Jar

49¢

Fresh, Crisp California

LETTUCE

2 hds.

25

Fresh California Slicers

TOMATOES

lb.

19

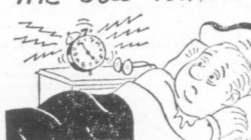
PRICES GOOD AT BOTH U-TOTE-EM STORES

U-TOTE-EM FOOD CENTER

Plenty of Free Parking

312 East 12th St., Ben

The Old Timer



"There's nothing like the clanging of an alarm clock to remind you that the best part of the day is over."

ager, Ford Motor Co., Louisville. Special program for ladies and numerous social affairs are being arranged by C. E. Wilson, Paducah, convention chairman.

Mr. and Mrs. Pendley Washburn of Route 4 were shoppers in Benton Saturday.

Robert Lovett and Miss Ruby Lovett of Route 4 were visitors in town Saturday.

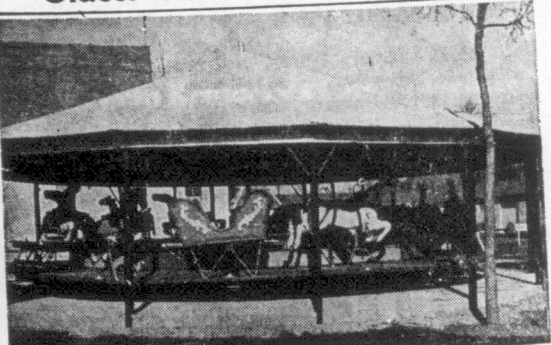
Mrs. Dan Gold of Route 5 was a visitor in Benton Saturday.

Ky. Auto Dealers Will Meet Sept. 20 At Gilbertsville

The Kentucky Automobile Dealers Association will meet Sept. 20-22 at Ky. Dam Village Park, Gilbertsville. N. S. McCaw, Madisonville, president, will conduct the business sessions.

Dealers include: M. R. Darlington Jr., managing director of inter-industry highway safety committee, Washington, D. C.; J. E. Stanford, director of public relations, Kentucky Farm Bureau Federation, Louisville; Jean Chaffin, Roseman, Mont.; E. F. Latimer, president of American Discount Co., Charlotte, N. C.; Dave Reese Olds-Rambler, dealer of Drexel Hill, Pa., and D. C. Burdette, district sales manager, Ford Motor Co., Louisville.

Oldest Carrousel in Existence



The exact age of this ancient carrousel is not known, but it is believed to be the oldest in operation in America. The stationary steam engine on the right supplies motive power. Both carrousel and engine have been restored to perfect working order and entertain youngsters daily at Pioneer Village in Minden, Nebraska, located on U.S. Highways 6 and 34.

This summer, millions of Americans will board thousands of carrouseis, more commonly known as merry-go-rounds at amusement parks, carnivals, and midway to ride to absolute nowhere. But you'll have to go to Harold Warp's Pioneer Village at Minden, Nebraska, to see what is believed to be the oldest carrousel still in existence. This old timer was one of the first to be powered by a steam engine. As late as 1912 one was motivated by mule power. Prior to that, manpower was used, and some carrousel models re-

FIN 'N FEATHER INN A MODERN MOTEL

• Air Conditioned
• A Cordial Welcome Awaits You Where Hospitality is a Habit
On U. S. 68—Mile West of Egner's Ferry Bridge at Aurora
P. O., RFD, Hardin, Ky. Phone 248-W, Murray, Ky.

LAKE PARK MOTEL



Modern In Every Respect —
Ky. Lake's Nicest and Friendliest
Air Conditioned — Electric Heat
Phone FOrest 2-9253 Gilbertsville, Ky.

U-TOTE-EM

Super Market No. 34
Area's Largest Super Market
Located on the "Y" —
Intersection of U. S. Highways 68 and 641
Benton, Ky.
Route 6
Phone LA 7-6971
Complete Butcher Shop
U. S. Choice Beef
Steaks Cut to Order
Barbecued Chickens
Purchase your grocery needs at bargain prices from
U-Tote-Em Super Market
Open 7 Days a Week — 7:30 A.M. to 9:00 P.M.
• Gifts • Souvenirs • Sporting Goods

DOG 'N SUDS



One Mile Below Dam Highway 282, Gilbertsville
• Sandwiches —
Hamburger, Cheeseburger, Barbecue, Chuck Wagon Steaks, Coney Dogs, Tenderloin Fish.
• French Fries, Sundaes and Malts
• Root Beer • Orange • Lemon • Coffee
OPEN 10 A. M. TIL

TEAGUE SHOP-RITE



TEAGUE'S SHOP-RITE FOODS
East 12th Benton, Ky.
Kentucky Lake Area's Largest and finest Super Market
Open 7 a. m. to 9 p. m. 6 Days a Week
Monday Through Saturday
Serving Finest Foods Anywhere
U. S. D. A. Choice Beef

LENEAVE'S GULF SERVICE



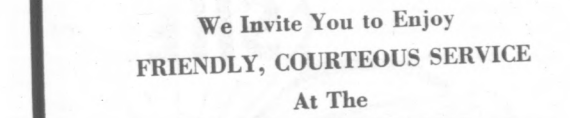
Expert Wrecker Service
2 Wreckers Call Collect for Wrecker Service
All Modern Wrecker Equipment to Take Care of
All Your Needs
• Gulf GAS and OILS • TIRES • BATTERIES
• FISHING TACKLE • FISHING LICENSES
Drive in for Expert Auto Service or
Phone LA 7-3951 Days or
LA 7-4361 Nights
Main Street Benton, Ky.



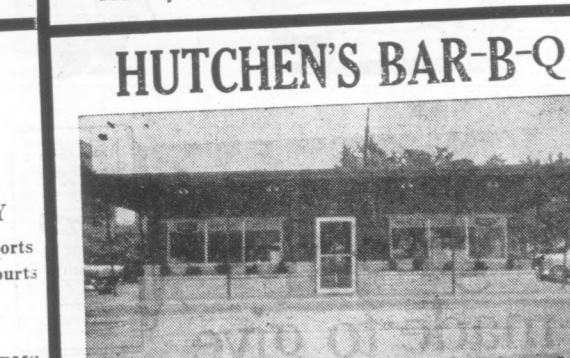
SHOP AT
W. W. JOYCE
GROCERY
In Gilbertsville, Ky.
Air Conditioned
FOR YOUR SHOPPING COMFORT
FEATURING: Fresh, Fancy and Staple Foods, Fresh Meats,
Frozen Foods, Fishing Tackle and Equipment

FOR THE VACATION You've Dreamed Of

• Reasonable Rates—Cottages, Motel Rooms, Apartments
• Tennis
• Golf
• Water Sports
• Swimming in our beautiful filtered swimming pool.
We Invite You to Enjoy
FRIENDLY, COURTEOUS SERVICE
At The
LYNNHURST RESORT
Murray RFD 6 Phone ID-69331



HUTCHEN'S BAR-B-Q



Benton, Ky. (KNOWN FAR AND NEAR) Air Conditioned
We Specialize in Real Hickory Smoked Barbecue
Sold by the Sandwich, Pound or Whole Shoulder
Short Orders — Sandwiches of All Kinds
Thick Shakes — Cones — Fountain Drinks
— CURB SERVICE —
15 Minutes from Kentucky Dam on Highway 641
Mr. and Mrs. W. C. Hutchens Phone Lakeside 7-9551

GIBBS COTTAGES

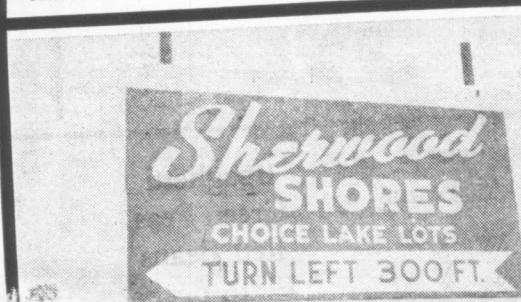
"Located On Ky. Lake In The Wooded Area"
IDEAL FOR GROUPS
One mile south of Ky. Dam off Highway 641
For Reservations Write ROBERT BUSHART & SON
Gilbertsville, Ky. Owners

FLORENCE GIBBS REALTOR

Gilbertsville, Ky.
BEAUTIFUL KENTUCKY LAKE PROPERTIES
Phone FOrest 2-4211, Gilbertsville, Ky.
On U. S. 641, 1 Mile South of Kentucky Dam

H. V. DUCKETT AND ASSOCIATES Realtors

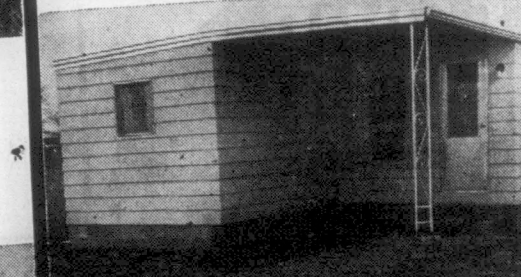
KENTUCKY LAKE PROPERTY
• Lake Front Lots • Homes • Resorts
• Business Sites • Motels and Trailer Courts
• Property Management
SELECT BUSINESS LOTS COMFORTABLE HOMES
GOOD FARMS FHA OR GI LOANS
INDUSTRIAL SITES CALVERT CITY, KY.
Telephones EXpress 5-4545 and EXpress 5-4343



CHOICE LAKE LOTS

On BEAUTIFUL KENTUCKY LAKE
• Restricted Subdivision—Boat Docks—Beaches and Parks
LOTS FROM \$489 to \$1785.00
Turn East Off 68 to Highway 963—Follow Arrows

CALVERT COTTAGES



• Precision Built
• Completely Furnished
• Pre-Constructed Homes
Featuring 2-Bed Room Model Shown Above
See and Inspect Models on Display At
Intersections of Highways 641 and 68—Next Door to Marshall County C. of C.

CLOVERLEAF MOTEL

— 23 Air Conditioned Rooms —
Full-Wall Carpeting, Tub-Shower, Room Phones, TV's
• Heated Swimming Pool •
THE FLOROS
Highway 62
Gilbertsville, Ky.
Phone FOrest 2-4295

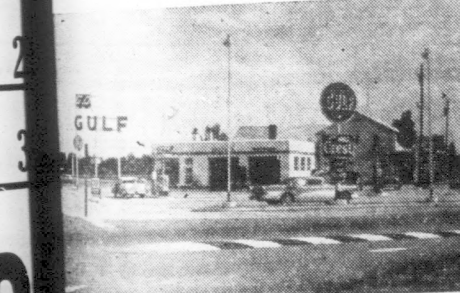
"The Eating Place On Ky. Lake"



Sue & Charlie's RESTAURANT
On U. S. 68, Near Ky. Lake State Park
FAMOUS FISH DINNERS
With
HUSH PUPPIES
Chicken Steak Country Ham
Shrimp Scallops

TONY KING'S GULF SERVICE

Complete Gulf Service
• Tires • Batteries
• Washing • Polishing
• Road Service
at Intersection U. S. Highways 68 and 641
Ph. LA 7-5245 — Your Business Appreciated



BRADY'S

Wholesale Distributors
On U. S. Highway — Near Benton

LARGEST DISCOUNT HOUSE

And Bargain - Bargains
In Western Kentucky



Be Sure to Visit The
New and Entirely Different
Year-Round
FISHING LOUNGE
The Country's Most Unique Recreation Center
Division of
FISHERMAN'S ONE STOP
U. S. 68—East End Egner's Bridge



FISHING LOUNGE

ky, August 27,

on a cake walk
those that did the
as we also say
on. Without your
not have succe
everyone who ha
program we gra
ate your help, re
eration of all was
the success of the
John W. Gilliam, p

better
less

39
lb.

35
lb.

35
lb.

35
lb.

35
lb.

59
Can

59
Oz. Cans

59
bury
ITS

59
nip

59
ressing

59
9c

25

19

RES
NTER

312 East 12th St., Benton

