



MURRAY STATE
UNIVERSITY

Murray State's Digital Commons

Marshall Courier

Newspapers

9-28-1961

The Marshall Courier, September 28, 1961

The Marshall Courier

Follow this and additional works at: <https://digitalcommons.murraystate.edu/mc>

Recommended Citation

The Marshall Courier, "The Marshall Courier, September 28, 1961" (1961). *Marshall Courier*. 612.
<https://digitalcommons.murraystate.edu/mc/612>

This Newspaper is brought to you for free and open access by the Newspapers at Murray State's Digital Commons. It has been accepted for inclusion in Marshall Courier by an authorized administrator of Murray State's Digital Commons. For more information, please contact msu.digitalcommons@murraystate.edu.

s for Fall Decorating
with Excellent Quality

NEW STORE WITH THE
WEST IN FURNITURE

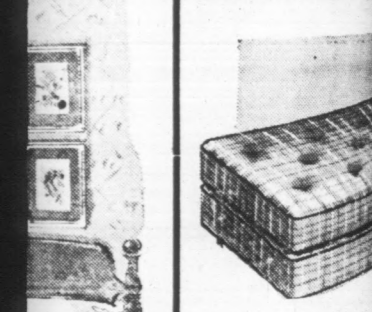
hundred-year-old theme!

Features: Pittsburgh plate glass
mirrors, carefree Formica tops,
natural birch wood grain, Dux
"Dulux" protective coating, and
drawer interiors finished with
smooth Perma-sheen. A new in-
terpretation of Early American fur-
niture by designer Leo Jirass.

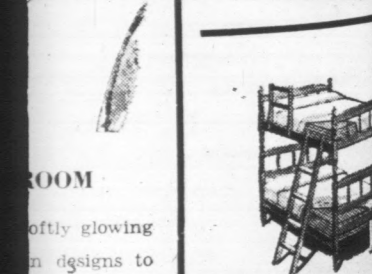


dresser, framed
spindle bed, chest
drawer double dresser with Formica top
keep its beauty indefinitely with normal
spindle bed is available in lustrous black
and white or in a variety of colors. The
chest, too, features a beautiful
top and has 5 big drawers.

MATTRESS
and
BOX SPRING



Quality At A
Special Price
\$39.50



BUNK BED
In Maple With Bank
Mattresses. Wagon
Design.
\$89.50



ANCE & FURNITURE
Easy Terms - Up to 36 Mos.

ugh
als

ON CROSS
is a wonderful
children or a re-
ons of a whole

thing about a
that's different
erings of people.
ard "home" gives
a closeness and
at many events,
many kinds of
perhaps the most
the friendliest is
held by a coun-

MECOMING was
y at the Church
Church, at the
Benton. It was
th birthday; the
been started in
the same time the
beginning.
The bishop
was the district
and four former

ladies and some
were dressed in
years ago. And
dies had worked
e tables and ta-
ed.

IST, you know,
well. Of all the
the Methodist
Chicken Dinner
probably functions

it outdo. It
the Church Grove Meth-
had no exception.
had huge amounts of
ed food, and a crowd
ed to match the food.

ALL of the faithful
were there. We saw
the Carl and the
the Artelle Hal-
Tom Haltons, the
the Joe Ralph
any others.
ress, one of the
guests two of her
Riley and the
of Benton.

visitors were the
the 6 Holland
rvin Princes and
es.
were present—
idge Harve Riley,
Artelle Halton
ed Earl Osborne,
ntioned "politics,"
was too busy eat-
"politicizing."

REAT day for the
Methodists.
y none of those
ly forgot.
Church Grove
rch is still func-
ing from now, its
ary celebration
e something "out
to exceed the
program.

UGH — We didn't
s at the Church
st homecoming.
me the other day
e better than av-

at two ladies were
al problems. One
asked the other:
entist a careful

the reply. "He
y teeth was great
was another joke
les—who seem to
ng their ailments.
y lady was telling
uch help she had
her psychiatrist.
his ago," she said,
phone rang I was
ver it. Now I an-
er it rings or not."

Build Marshall
County And It
Will Build You

Volume XXIV

Paid Circulation sells — That Is the
Kind This Newspaper Offers Customers

The Marshall Courier

Western Kentucky's Largest Weekly Newspaper — Benton and Marshall County's Home Newspaper

Benton, Kentucky, Sept. 28, 1961

First In Circulation, First In Advertising
First In The Home, First In Reader Interest.

Number 20

Benton The Best
Town in Ky.
By A Dam Site

Head of Draft Board Honored

Harry K. Harrell, chairman of local Board 68, Selective Service, was honored last week by being presented with a certificate of appreciation for five years of service with the local draft board.

In the absence of Lt. Col. Everett S. Stephenson, the certificate was presented by the clerk of the local board, Mrs. Clara Phillips.

All board members were present for the ceremony, held in the board room at Benton City Hall.

Mr. Harrell, a native of Marshall County, operates a grocery store in Calvert City, and is also active in civic affairs of the county.

He has served on the equalization board of Marshall County for eight years, and has been active with Selective Service since May 1956, having been elected local board chairman in 1958.

He understands the problems of the registrants as he has two sons who have been drafted since he became a member of the board. He also has two other sons who have served by enlistment, one being on active duty at the time in Japan. He has had the



HARRY K. HARRELL

privilege of visiting large Army and Air Force centers and knows the conditions that prevail in these camps.

It is with much appreciation that Selective Service honors such men as Mr. Harrell, who give their time so unselfishly with no thought of any compensation other than knowing they are serving their country in the capacity requested of them.

North Marshall Is Considering Plans For Football Team

The Calvert City Lions Club met Sept. 21 at the Gypsy Tea Room.

It was announced that the Hole-In-One Golf Contest netted the club \$100.

The club also had two entries in the Marshall County Go-Kart Race held Saturday.

Attending the meeting were North Marshall students Dwain Puckett, Terry Denfip, Tommy Hammer and Butch Reed, who are interested in getting help from the Lion's Club in starting football at the high school. The club is considering the project.

Representing the Benton Lions were Charles Kemp, Joe Ely, Bill Farris, George Erickson, and President Jack Pearlman, who met with the Calvert Club to plan the district convention to be held Sept. 30 and Oct. 1 at Ky. Dam Village.

Speaker for the evening was Rayburn Watkins of Louisville, executive vice president of Associated Industries of Kentucky. His talk was entitled "The Razor's Edge," a talk designed to alert Americans against the pitfalls and problems of current times.

Bill Parker was a visitor at the meeting.

N. MARSHALL JUNIORS ELECT CLASS OFFICERS
The Junior Class of North Marshall High School has elected the following officers: Bill Underwood, president; Gene Brooks, vice president; Martha Parker, secretary; Mary Kay Culver, treasurer, and Marilyn Kay Wyatt, reporter.

Class sponsors are: Mrs. Mary Cole, Mrs. Pray Holland, Mr. Roger Jones, and Mr. Earl Walker.

CLASS PICKS OFFICERS
Class officers were elected Monday in Mrs. Vida Edwards' room, who teaches the sixth grade.

Gorgie Coffeen was elected president; Woody Irwin, vice president; Jonna Coulter, secretary-treasurer; and Vicki Wyatt, reporter.

Tom Scott, 58, Lodge Master, Passes Away

Funeral services for Tom Scott, 58, were held Wednesday at Filbeck-Cann Chapel. Burial was in Sudburg Cemetery at Friendship, Tenn.

Rev. W. T. Call and J. N. Forbes officiated.

Mr. Scott resided in the Sled Creek area on Gilbertville Route 1.

He was worshipful master of the Briensburg Lodge and a member of the Methodist Church.

Mr. Scott died of a heart attack in his fishing boat. Searchers found him when he failed to return home from a fishing trip alone on Ky. Lake.

He is survived by his wife, Mrs. Georgia Scott; two sisters, Mrs. Roy Emerson of Bells, Tenn., and Mrs. T. E. Robertson of Memphis; two brothers, Seburn Scott of Memphis and Walter Scott of Troy, Tenn.

VICKERS POST TO HOLD ANNUAL TURKEY SHOOT
Harrison Vickers Post No. 144, American Legion, will start its annual turkey shoot Saturday night, Oct. 7. For a number of years the project has been held on the property of Roy E. Story on Highway 62 near Collins & Marshall's grocery. Mr. Story is a member of the Post.

The shoots will continue each Saturday night beginning at 6 o'clock. The public is cordially invited. Homemade cake and coffee will be served at each shoot, and no charge will be made. The ladies of the Auxiliary will prepare the cakes and coffee.

Mrs. James L. Draffen went to Starkville, Miss., last week and enrolled her son, Jimmy, at Mississippi State College. Before returning home she visited her parents, Mr. and Mrs. Tip Morris in Florence, Ala.

Charlotte Bivens has gone to Wayne, Mich. where she is employed. She is the daughter of Mr. and Mrs. John Bivens of Calvert.

Bookmobile Service to Start Oct. 2

The Marshall County Library Board met Tuesday night with four members present.

Chairman Bob Ross was authorized to enter into a contract with Calway County to provide inter-county bookmobile service scheduled to begin the week of Oct. 2-6.

A contract was signed with the Library Extension Dept. agreeing to provide regional library service for Marshall County.

Mark Clayton was asked to represent this board at an organizational meeting of a Regional Library Board at Murray, Oct. 2.

Mrs. Douglas Rasco, chairman of Library Committee, Benton Senior Woman's Club, and her committee members were asked to serve as publicity agents for the library and the bookmobile service this fiscal year.

The Woman's Club sponsored the library until it and the bookmobile became a participating member of the Murray-Calway County Regional Library last July 1.

Any persons desiring bookmobile stops in their communities should contact either Mrs. Katie Major or Mrs. Loretta Edwards, the librarians.

Any group or individual having community library news, please call LA 7-7458.

N. Marshall P-TA To Be Represented At Murray Event
The North Marshall P-TA met Monday night, Sept. 25, at the school with Mrs. R. A. Wesson, newly-elected president, presiding.

The other officers include Bob Thomas, vice president; Mrs. George Smith, secretary; Wayne Wyatt, treasurer; Mrs. James Draffen, membership chairman; Mrs. Rose Darnell, scholarship chairman; Ed O'Dell, ways and means chairman; Mrs. Frank Tomasic, publicity.

North Marshall will be represented at the fall PTA conference in Murray on Oct. 5.

A report on the county council, its progress and the support it gives to schools, was made by Ed O'Dell.

The program, "What The School Has to Offer," was presented by Mrs. Harold Wilkins. Open house was held following the meeting. Cake and coffee were served.

All meetings this year will be held the fourth Monday nights at 7 p. m.

Freshman Officers At North Marshall
The Freshman Class of North Marshall High School elected officers at a meeting held Sept. 21 at the school.

Donald King was elected president; Tommy Stice, vice president; Pat Coursey, secretary-treasurer; and Don Larimer, reporter.



THE KENTUCKY DAM FOX HUNTERS ASSOCIATION is holding its annual field trials this week in Marshall County. Shown here with dogs are, left to right, O. A. Adams of Route 5, president of the association; Robert Turner of Route 5, secretary; and Floyd Tooke of Cadiz, former president.

Circuit Court to Start On Oct. 16

Marshall Circuit Court will open its fall term on Monday, Oct. 16, with Judge Earl Osborne on the bench.

The grand jury will assemble Oct. 16 and is expected to investigate several recent break-ins, larcenies and other crimes. It probably will be in session three or four days.

Persons summoned for jury duty are as follows: Henry Blagg, Norman Pace, Ernestine Staples, Dave Walston, Harold Bailey, Frank Travis, Bobby L. Jarvis, J. K. Birdsong, Melvin Cooper, James W. English, Kirkland Barrett, Irma Arthur, Ray Owens.

Sara Lee Keeling, Goebel Lamb, Coleman Clark, Mrs. Marshall Rickman, Mrs. Earl Cole, James B. Sheppard, Elmer Rudolph, Mrs. Wilma Fay Evans, Mrs. E. M. Wolfe, Mrs. Thomas L. Boulard, Jesse Cornwell, Brooks Johnston, Charlie Cone, Clay Cole, J. C. King, Fred C. Williams.

Arle Gregory, George Holland, Howard Matheny, Henry J. Bloodworth, Kenneth Beggs, Mrs. H. T. Hurley, Marshall Rickman, Bob Thompson, Chester Darnell, Eulean Ham, Fred Pace, Ishiah Beck, James W. Hamlet, Clois Chiles.

Ruth Hill, Jonah Pace, Gentry Swift, Paul Clayton, Lucille Cavannah, William Washburn, Patsy Jean Hendricks, Boyce Chumler, Mrs. Clarence L. Freeman, J. C. McGregor, Ada Kathleen Donohoo, Coy M. Copeland, Mildred Titworth, L. A. Solomon, Curt Chambers, Grover E. Smith and Solon Pace.

1962 Autos On Display Here This Weekend
The new 1962 automobiles are on display in Benton this weekend. You will want to see them. Dealers showing the new cars are listed below.

Messrs. Burl Platt and Bobby Boyd of Boyd Motor Co., announce the showing this weekend of the 1962 line of Chrysler made cars.

Included in these lines are the Chrysler, Plymouth and Valiant. Chrysler is a new line, this being the first year Benton has had a dealer. The new Plymouth has been completely restyled, and many new engineering improvements have been made. The Valiant is the compact line of Plymouth autos, and also will be on display Friday.

The public is invited to see these new 1962 autos at Boyd Motor Co., on Main Street.

OFFICERS ARE ELECTED BY BRIENSBURG O. E. S.
The annual election of Briensburg Chapter OES, No. 454, was held Sept. 22. The following officers were elected to serve for the ensuing year:

Mrs. Roetta Turner, worthy matron; Robert Turner, worthy patron; Mrs. Josephine Cox, associate matron; David Cox, associate patron; Mrs. Nelle Covington, secretary; and Bob Husher, treasurer.

Installation of new officers will be held Oct. 13 at 7:30 p. m.

Calvert, Hardin G'ville Candidates File for Offices

Candidates for municipal offices in the towns of Calvert City, Gilbertsville and Hardin filed their papers last Friday and Saturday in the office of County Clerk Toad Brien.

Deadline for the candidates to file was Saturday midnight, Sept. 23.

Two Calvert City tickets were filed, but only one ticket each was filed for Gilbertsville and Hardin.

The Progressive - Industrial Party of Calvert City, using a ballot emblem of a factory building, petitioned that the name of H. V. Duckett be placed on the ballot as a candidate for mayor, and the name of James C. Robinson as a candidate for City Council.

Duckett is the present mayor of Calvert City.

The Calvert City Progressive Party, using a ballot emblem of "clasped hands," petitioned that the following ticket be placed on the ballot:

Dr. William J. Colburn, for mayor; Bob Arnold, for city judge; Dr. Carroll W. Traylor, B. N. (Gim) Dossett, Hardy Cann, Frank Sanders, Dwight Robb and Wayne Littlejohn, for seats on the City Council.

Gilbertsville candidates, under the Star Ticket, will be John L. Cook, for city judge; Roy Culp, James Dexter, Dean Beth, James C. Owen and J. D. Woods, for members of the board of trustees.

Only one ticket was filed by Gilbertsville citizens.

Candidates for the City of Hardin board of trustees will be Jimmie Lewis, Loyd Sills, Bryan Jordan, Headley Thweatt, John L. Hicks and Tom Pace.

Only one ticket was filed by the Hardin citizens.

These municipal elections will be held at the general election next Nov. 7.

Benton held its municipal election at the primary last May. Only Republican candidate will be City Judge H. A. Riley, who will run against Democrat Artelle Halton at the November election.

4 Are Caught Breaking Into Grocery Store
Three men and a woman were captured early Sunday morning after an attempt to break into Higgins Grocery Store at Briensburg.

The prowlers broke a store window with a big stick. The noise awakened Luther Collins, who lives across the road from the store. He fired a shot into the air and the prowlers fled.

Red Penney, who lives nearby, got in his car and chased the prowlers to Paducah, where they were arrested by Paducah police.

The four suspects were brought to Benton and placed in jail on charges of breaking and entering. All four live in McCracken County.

OAK LEVEL METHODIST REVIVAL STARTS SOON
Rev. Johnson Easley will begin a series of revival services at the Oak Level Methodist church Sunday, Oct. 15.

Services will be held daily at 11 a. m. and 7 p. m. Ivory Palmer will lead the singing. The public is invited to attend.

New ASC Community Committeemen Chosen
Results of the election of ASC community committeemen for Marshall County were released Wednesday by Renlee Rudolph, chairman, Marshall County ASC Committee. The election was held Sept. 26 at meeting held at Fairdealing School for Community 1; Briensburg School for Community 2; Sharpe School for Community 3; ASC Office for Community 4 and Brewers School for Community 5.

Farmers elected to the committee for Community 1: Emil Mohler, chairman; Ollice Mason, Charles York, chairman; Grover Harrison, vice chairman; Carl Lovett, member; Kermit Harrison, first alternate; Robert Lovett, second alternate.

Farmers elected to the committee for Community 2: Noble Henson, chairman; Dennis Henson, member; W. F. Pritchard, first alternate; Roy Vasseur, second alternate.

Farmers elected to the committee for Community 3: T. R. am, Friday, Sept. 29.

SHOWER FOR WM. RILEY FAMILY SLATED TONIGHT

A grocery shower will be held tonight (Thursday) for the William Riley family at the Riley home. Mr. Riley has been ill for some time. Those who cannot attend the shower may leave grocery items either at Homer

Lucas Store on Main Street or Dan Draffen's Grocery on the Oak Level Road.

Mr. and Mrs. Valcilo Henson of Route 5 were shoppers in Benton Friday afternoon. Mr. and Mrs. Arlie Gregory of Route 7 were shoppers in town Friday.



Ethan Allen
FURNITURE
FOR FAMILY
LIVING

If you enjoy the pleasures of family living and friendly entertaining, you'll love the warmth and welcoming cheer of our open stock Ethan Allen furniture by Baumritter. Astonishingly lovely solutions to storage and decorating problems in every room—more than 250 pieces to choose from.

UNITED 219 Broadway, Paducah, Ky.
HOME FURNISHINGS CO. FREE DELIVERY

LET'S GO BIG BUYS FOR FALL

JACKETS

Tankers\$6.95 Bombers\$7.95
Parkas with Quilted Hood\$14.95

Shelf Soiled - - - New	God Used - - - Army
Reg. \$5.95	Field
JACKETS	JACKETS
\$1.99	\$2.95

BLANKETS

40% Wool	100% Wool
Grey-Maroon Stripe	O.D., Green, Maroon
\$3.95	\$6.95

Comforters, Twin Size \$5.95, Regular \$6.95

WARM MORNING HEATERS

Good, Used	100-Lb. Size
Reg. \$89.50	Brick Lined
When New	Perfect Grates
\$34.95	

SAVE ON FALL PAINT

HOUSE PAINT	
Cicero Brand, Made to sell at \$3.95	\$2.65 gal.
LATEX WALL PAINT	
Famous Holland Brand	\$3.95 gal.
Paint Brushes	3" - \$1.25 4" - \$1.75

FOAM RUBBER

Just received a large shipment in 1" to 4" thickness. Be sure to bring measurements. Also have shredded foam for stuffing toys, pillows, cushions.

LIBRARY BOOKS

3 for \$1

We bought an Army Post Library. Fine Books in History, Science, Fiction. See Our Display. TV Is Wonderful - - - So Is Reading

For The Unusual - - -

- - - See Country Boy

HOME OF ARMY SURPLUS...NOTHING BUT BARGAINS EVERY DAY **COUNTRY BOY STORES** BARGAIN DAY

Third and Kentucky in Paducah

Army Space Heaters Known Commercially As

WARM MORNING No. 120 COAL HEATER

Popular round radiant style. Patented firebrick interior. Cast iron grates and fire box. Will heat 4 to five rooms comfortably. Holds fire up to 72 hours. Regular dealers get \$89.95 for the 100-lb. size Warm Morning. Just look at this price.

USED . . . GOOD

\$34.95

BUY NOW . . . or LAY-A-WAY

Used

Electric

Ranges

\$29.95

VERY DAY **COUNTRY BOY STORES** BARGAIN DAY

Third and Kentucky, Paducah Ph. 442-5665

Used

Refrigerators

\$39.95

Mrs. Leroy Keeling Hostess To Circle Of Presbyterians

Circle 2 of the United Presbyterian Women met Tuesday in the home of Mrs. Leroy Keeling, who served luncheon.

Mrs. Byron Craig opened the meeting with prayer and presented the Bible study from the book, "In Him Was Life."

The circle chairman, Mrs. Robert Arnold, conducted the business meeting, at which time it was announced that the annual retreat will be held at 9 a.m. Saturday, Oct. 7, at the Douglas Foster home on Calvert City Route 2.

The Fall Presbyterian meeting will be held at Hopkinsville Oct. 4.

Envelopes containing "The Least Coin" donation were collected and sent to Christian churches in Asia.

Mrs. George Hubbard presented the program on "What Is a Church?"

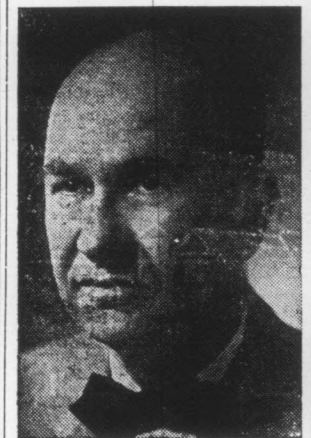
Guests at the meeting were Meses. Robert Dukes, George Hubbard, Violet Calkson, and Miss Virginia Bowman.

Members attending were Meses. Robert Arnold, Carl McKim G. H. Alford, Russell Badgett, Richard Hampton, Frank Tomisic, and Byron Craig.

TIME TO RENEW?

Is it time to renew your subscription? It is if the numerals in the upper left hand corner of page one read 10-1-61. If your subscription does expire October 1, renew today!

Subscribe to The Courier



GAITHEL L. SIMPSON, M. D., Greenville, was installed as president of the Kentucky State Medical Association at its annual meeting held in Louisville Sept. 19-21.

MFA MUTUAL INSURANCE CO.
FOREST COLE
Agent
Auto - Fire - Hospital
And Liability
Phone LA 7-7434

Benton Theatre

Benton, Kentucky

THURS., FRI., SEPT. 28 - 29
Peter Finch - Angie Dickinson
In

"The Sins of Rachel Cade"

In Technicolor

SAT., SEPT. 30

Double Feature

"GUN FIGHT"

Plus

"Operation Bottleneck"

SUN., MON., TUES., OCT. 1-2-3

Marlon Brando

"One Eyed Jacks"

In Technicolor

WED., THURS., FRI.

OCT. 4-5-6

Cary Grant - Deborah Carr

In

"The Grass Is Greener"

In Technicolor

SOCIAL and PERSONAL

Mrs. Lillian Smith of Murray visited Mrs. Genoa Gregory and Mrs. Zora Stone Thursday and Friday of the past week.

Mrs. Bob Simmons of Tampa, Fla., visited friends in Benton while here on a business trip last week.

Mrs. Sweet Roberts will leave Oct. 15 for Chile, South America, to visit with her daughter, Mr. and Mrs. Benson Blackie (Novalee Roberts). Her son, Seth, Jr., of Cincinnati, will come to Benton, they will go to Cincinnati and then to Miami, Fla., and from there to Chile, S. A. Mrs. Roberts will make the trip from Cincinnati by plane to her destination.

Miss Nancy Jane Hancock of Route 6 was a patient this week at the Baptist Hospital in Paducah.

Subscribe to The Courier

Miss Janice Holland, daughter of Mr. and Mrs. Arlie Holland, of Gilbertsville Route 1, has recovered from an illness of pneumonia.

Mrs. Bess Roberts of Benton, and daughter, Peggy, and Mrs. Robert Waller of Reidland have returned from Florence, Ala., where they visited Mrs. James Waller and family.

Dinner guests of Mrs. Lillie Cooper Thursday of the past week were her brother, Arthur Travis of Paducah Route 4, Mrs. Elsa Warren, Emmett Washburn, and Gene Adair.

Miss Nancy Jane Hancock of Route 6 was a patient this week at the Baptist Hospital in Paducah.

Mr. and Mrs. Homer Solomon will leave Saturday for New Orleans, where they will attend a convention of State Farm Insurance Co. agents. They will stay at the Roosevelt Hotel.



The safest side for a man to take in an argument between two neighbors is the outside.

Mrs. Frank Kennedy Hostess To WSCS Of Calvert Church

The WSCS of the Calvert City Methodist Church met Monday afternoon in the home of Mrs. Frank Kennedy.

The devotional was given by Mrs. Pearl Smith.

The program on "The Spirit of Life" was presented by Mrs. Luther Boulden.

Mrs. J. T. Lee, president, presided at the meeting business session.

Delicious refreshments were served to Meses. W. B. Elam, Della Key, Grace Denip, A. T. Clayton, Pearl Smith, Luther Boulden, Estill Sewell, Arnett and Frank Kennedy and the hostess. The visitors were Mrs. Larry Ford, Mrs. Mary Latimer, Mrs. Harry Manning and Anita.

THE MARSHALL
Published Thursday week at 200 East Elm in Benton, Ky. Entered second class mail matter Oct. 3, 1937, at the post office, under the name of The Marshall, Kentucky.
Subscription rates: In Marshall and adjacent counties, \$2.50 per year; elsewhere, \$3.00 per year.
Classified advertising rates upon request. Cards of thanks, The Marshall, Wyatt Cross, Publishers.

Curtis Lee Grace, Gauley Grace, was a week at the Baptist Paducah.
Bill Courney of Route 2 was in town on business.

Bill Courney of Route 2 was in town on business.

Check these food buys and Check-out with savings

Jones Economy Pak - Sliced Tray Packed

BACON LB. 39c
Thursday, Friday and Saturday Only

Jones Ready to Eat

HAMS Whole or Shank **lb. 39c**

Rib-Fresh **STEW BEEF** - - - - - **Lb. 19c**

FREE 100 MM STAMPS

With \$3.00 Purchase

On Or Before Sat., Sept. 30th

With This Coupon

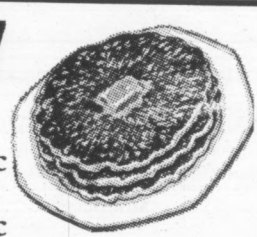
SHELTON'S SHOP RITE

Pillsbury or Ballard

BISCUITS

BETTER BREAKFAST

1 Lb. Box **Jemima PANCAKE FLOUR** . . 2 For 35c
Reg. 63c 24 Oz. Log Cabin **SYRUP** 59c



CHILI TIME

Boone County Chili Beans 2 For 29c
All Brands Crackers 25c
303 Lucky Lady Tomatoes 2 For 29c

Swift's Jewel

SHORTENING

? MONDAY

Mystery Special Day
All Money Savers

Gold Medal **FLOUR** - - - - - 5 Lbs. 49c

303 Colonial **FRUIT COCKTAIL** 19c

Royal All Flavors **GELATIN** Reg. 3 for 31c 4 For 31c

46 Oz. Can H-C **ORANGE DRINK** - - - - - 29c

Cost A Lot to Feed Those Dogs? How's This for a Saver!

Reg. \$2.55

25 LB. VETS DOG FOOD \$2.15

Sory We Ran Out Last Week

- Clean, Convenient Shopping
- Merchant Magic Stamps
- Reasonable Prices
- Guaranteed Beef
- Courteous Carry-Out Service
- Trouble-Free Parking

Blue Bonnet **OLEO** - - - - - 1 Lb. Bo

Betty Crocker Reg. 2 for 47c **CAKE MIX** - - - - - 2 For

Jumbo Reg. 35c **SCOTT TOWELS** - - - - - 2

WORN OUT N' FRAZZLED?

Reg. 69c Tek **TOOTH BRUSHES** **2 for 69c**

3 LB. CAN 59c

Texize Half Gallon Plastic **BLEACH** - - - - - 1/2 Gal

Russet **POTATOES** 25 Lb. Bag

5 LB. BAG 15c

Large No. 1 Fancy **BANANAS** - - - - - Lb. 9c

Sweet Yellow **ONIONS** - - - - - 4 Lbs. 19c

Flame Tokay **GRAPES** - - - - - 2 Lbs. 29c



PRICES GOOD THURSDAY TO THURSDAY

SHELTON'S SHOP-RITE FOODS

Store Hours: 7:30 to 7:00 Every Day Except Fri. and Sat. Til 8 P. M. Fri. and Sat.

SHELTON'S THE FRIENDLY STORE THAT SAVES YOU MONEY



... Kennedy
WCS
Church

... the Calvert City
... met Monday
... home of Mrs.
... was given by
... "The Spirit"
... esented by Mrs.

... president, pre-
... meeting business
... session.
... refreshments were
... W. B. Elam,
... Denfip, A. T.
... Smith, Luther
... Sewell, Arnett
... nney and the
... s. Mary Latimer,
... nning and Anita.

... out with savin

... AGE - - 3
... sdown - All Flavors

... KE MIX
... x 29c

... Cans

... - - 1 Lb.
... 47c

... - - 2
... 47c

... VELS - - -
... N OUT N' FRAZZLED?

... 2 for 6

... 3 LB. CAN

... - - 1 1/2

... DES 25 Lb. Bag

... BAG 15c

... - Lb. 9c

... - 4 Lbs. 19c

... 2 Lbs. 29c

... SHOP-RITE FOODS

... 8 P. M. Fri. and Sat.

... SAVES YOU

... 25 Lb. Bag

... BAG 15c

... - Lb. 9c

... - 4 Lbs. 19c

... 2 Lbs. 29c

... SHOP-RITE FOODS

... 8 P. M. Fri. and Sat.

... SAVES YOU

... SHOP-RITE FOODS

... 8 P. M. Fri. and Sat.

... SAVES YOU

... SAVES YOU

PENNEY'S

BROADWAY AT 5th, PADUCAH



Quick-Dry Diapers

- highly absorbent
- soft cotton gauze
- wrinkle-resistant

\$2 dozen

Great chance to stock up at Penney's low, low price! Full 20 by 40-inch size, medium weight, double woven cotton gauze! We had 'em specially woven to resist bulging wrinkling! Packaged for gift-giving!



BIRTHDAY SPECIALS

Cozy Cotton
Flannelette

177

Have the posh look of tapestry at bargain prices! Here stalk-slim slacks in creamy cotton corduroy go chick with cling-fit high rise waist, back zipper. In a bevy of rich prints. Machine wash, jiffy dry. Misses' sizes 8 to 18.



Orlon Cardigan
In New Colors.
New Designs!

Magenta! peacock! cinnamon! parrot! white! black! Fall's most exciting new hues captured in Orlon acrylic... making much, too, of new collar styles Dyed-to-match buttons (higher price feature). Wash easily by hand, dry quickly back to shape. Sizes 34 to 42.

\$4

TEAM WITH FLAVOR
COTTON CORD SLACKS
Slimming, tapering style with beautifully flat waist, back, zipper. Cut to our standards in magenta, peacock, cinnamon, parrot, black. Sizes 10-18.

1.99

PENNEY'S BIG BIRTHDAY BUYS

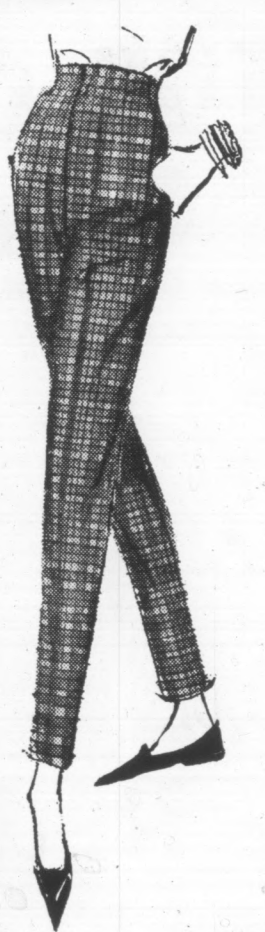


GRAB THESE SAVINGS! USE YOUR PENNEY CHARGE CARD!

Special! Made To Match and Mix
Maternity skirt, shirt or slacks!

2 for \$5

Gals! Get lots of mix... lots of savings with Penney's specially priced maternity sportswear! Only \$5 for 2 tops or bottoms that mix freely and fashionably — they're coordinated to the 'nth degree! Pick fully cut smock-tops in crisp cotton prints... mate 'em to chic cotton corduroy skirts, slacks, mid-calf or knee pants each with Helanca nylon expansion inserts. In vivid new colors... misses' size 8 to 18.



Buy On Slim
Print Slacks

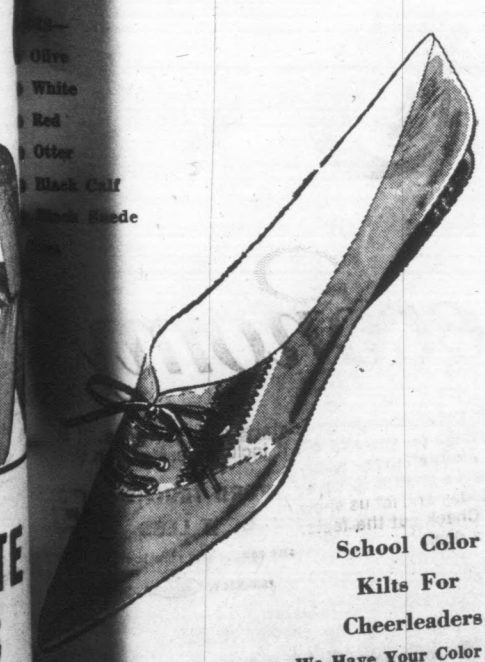
244

No chilly nights in these warm p.j.'s cut for comfort to our own specifications (won't bind no matter how you twist or turn). Toss in the washing machine between wearings. Choose several in prettily feminine prints. Sizes 32-40.

What's NEW

... ON WITH THE TIE LOOK!
A Sport Shoe for Campus Wear, Dates, and Informal Gatherings. You'll wear them everywhere the crowd goes with eyes all on You.

Petite Debs \$5.99



School Color
Kilts For
Cheerleaders
We Have Your Color



BIRTHDAY DINNER HELD

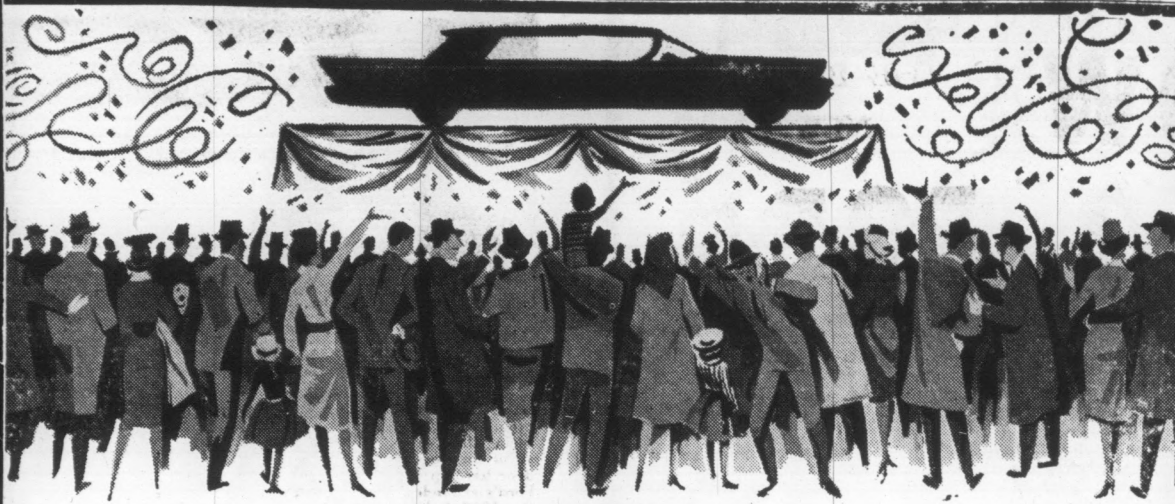
Mr. and Mrs. Nelson Cherry were honored with a birthday dinner Sunday, Sept. 24, in the home of Mr. and Mrs. L. L. Eg-

ner. A lovely birthday cake was the centerpiece for the table. Those present were Mr. and Mrs. Nelson Cherry, Diane, Alan and Kevin, Mr. and Mrs. Coleman

Hawkins, Kenneth and Tim and the L. L. Egner's. Gifts were presented to the honorees.

Subscribe to The Courier

Mrs. Dora Lents visited her niece, Mrs. Rufus York last week and attended church at the meeting going on in that neighborhood.



SPOTLIGHT ON '62 CARS

THE CARS FOR YOU IN '62
NOW ON DISPLAY

PLYMOUTH - VALIANT
AND THE FAMOUS "CHRYSLER NEWPORT"

We Invite You To Our Show Rooms To See the Finest Engineered Autos.

We Invite You To Take a Drive And See For Yourself.

BOYD MOTOR CO.

Benton, Kentucky



THE CURTAIN GOES UP
FRIDAY ON THE NEW
1962 CHEVROLET

A THRILLING NEW AUTO
FOR THE THRILL OF YOUR LIFE!

See The **FABULOUS NEW**
CHEVROLETS

AT

PHILLIPS CHEVROLET CO.

Gateway Bowling

Kenlake Lanes and Team No. 2 are tied for first place in the Thursday Night Ladies' League at Gateway Bowling Lanes. Each has won 6 and lost 2.

Dog & Sids is in third place with 5 wins and three losses.

Farewell Supper Is Held At Calvert City For Ed Rendleman

Friends of Ed Rendleman gathered in the basement of the Calvert Methodist Church for a farewell potluck supper honoring Ed, who is leaving this week for the Armed Services.

He was presented an engraved leatherbound St. James version of the Holy Bible from the Wesley Sunday School Class, of which he had been a teacher for many years.

Talks were made by the pastor, Rev. J. F. Moore, and Burnis Dowell, with response by Mr. Rendleman.

Enjoying the evening of fellowship were Mr. and Mrs. Sol Williams and daughters, Mr. and Mrs. Ed O'Dell and daughters, Mr. and Mrs. Coleman Hawkins and sons, Mr. and Mrs. Charles Hines and Doug, Mr. and Mrs. Bert Elam, Mr. and Mrs. Bob Seigfried and family, Mr. and Mrs. Govie Smith and daughters, Dr. and Mrs. Carroll Traylor and children, Mr. and Mrs. John Webster and son and Mr. Burnis Dowell and daughter.

Mrs. J. T. Lee, L. L. Egner, J. D. Stice, F. D. Stice, Estelle Sewell and Sam Ross. Also Dwayne, Elaine and Lolita Stice.

CHURCH GROUP BOWLS,

HOLDS WEINER ROAST

The Junior Class of Calvert Methodist Church School bowled at Gateway Lanes and then went for a weiner roast at Kentucky Dam Village State Park on Friday, Sept. 22. Their teacher, Mrs. Paul Owen, was assisted in entertaining the group by Mrs. Coleman Hawkins. Those attending were Carol Ray, Carla Williams, Sue Story, Judy Sewell, Sue Hicks, Augustus Dowell, Daffy Burt, Doug Hines, Kenneth Hawkins, James Solomon, Billy Sewell, Phillip Fleet, Jimmy Skelton, Mike Harrell and Eddie Colburn.

Mr. and Mrs. J. C. Hicks and daughter of Detroit came to Benton Wednesday for funeral and burial services of her mother, Mrs. Dave Walker.

Mr. and Mrs. Verl W. Carr were business visitors in Vincennes, Ind., Tuesday and Wednesday of this week.

and Moore's Camp is fourth with four wins and four losses. Cedar Hill Grocery is fifth with two wins and six losses, and Continental Finance is sixth with one win and seven losses.

Individual scores are: Peggy Wilson 459, Loreta Nelson 435, Rita Harris 434, Imogene Varine 409, Eloise Neighbors 392, and Mary Joyce 303.

In the Wednesday Night Ladies League, Team No. 2 is in first place with eight wins and no losses. Team No. 4 is in second place with four wins and four losses; Team No. 3 is in third place with three wins and five losses, and Team No. 1 is fourth with one win and seven losses.

Individual scorers are: Fanny Myers 351, Merline Jones 357, Alene Holland 341, and Joan Benneil 358.

HUSBAND & WIFE LEAGUE

Team	Won	Lost
Team 1	3	1
Team 2	4	0
Team 3	3	1
Team 4	1	3
Team 5	3	1
Team 6	0	4
Team 7	1	3
Team 8	1	3
Team	Won	Lost
Team 3	9	3
Team 2	8	4
Team 5	8	4
Team 8	6	6
Team 1	5	7
Team 4	5	7
Team 7	4	8
Team 6	3	9

High Individual Series: Ladies—

Irene Morgan 138-146-169-453
Agnes Faith 112-206-124-442
Nancy Elkins 150-140-152-442
Sue Clay 119-143-175-437
Polly VanVactor 155-149-133-437
Beverly Wiles 138-119-144-401
Peg Wilson 142-123-121-385
J. Benderman 122-111-102-335

Men—

Bill Morgan 153-199-171-523
Cln. Satterfield 188-131-193-513
Joe Fields 160-166-172-498
Ken Evans 171-146-151-468
Ken Wilson 140-128-136-404
Frank Ashley 130-117-134-381
Sub. H. Morris 140-130-109-379
Will E. Bushart 127-104-1212-352

BARN BURNS NEAR HERE; ARSON IS SUSPECTED

A barn on the old Lum Holley farm, now owned by Dr. E. M. Wolfe of Benton, was destroyed by fire last Sunday night about piled against the barn, and the old Birmingham Road southeast of Benton.

Arson is suspected in the barn burning. Dr. Wolfe reported that wood and paper had been piled against the barn, and the fire started at that spot.

PRIZES ARE AWARDED

Prize winners of the gifts given at the drawings held last Saturday at the Rendleman Jewelry Store in Calvert City in connection with the storewide sale held all last week were: First prize, watch, won by Lynn Boyd Jones; 2nd, transistor radio, Lillie Boudland; 3rd, pearls and jewel box, Mrs. Bobby Hargis; 4th, tie pin and cuff links, Theresa Pollard.

EARL JONES IS STUDENT

Earl Jones, son of Mr. and Mrs. Clay Jones of Benton Rt. 1, has entered Tulane University as a medical student. He holds the Rural Kentucky Medical scholarship and also the Avalon

SCHOOLGIRLS HOLD

A group of girls of the Grade School enjoyed a day at the Calvert City day afternoon, Sept. 24, attending were Carol Crowson, Diana Che Dowell, Tresa Phelps, Marsha Dowell, Lynn Lofton, Brenda Donna Jo Sullivan,

scholarship.

Earl received his August from Murray where he was a member of the Tau Omega and Beta Tau. He was a 1958 South Marshall High

SPECIAL PURCHASE

NAME BRAND

FALL SUITS 1-2 PRICE



Unusual Cooperation

One of Nation's Best Known Manufacturers Makes This Savings Possible.

Good assortment of the newest styles, patterns and fabrics. Remember, you save ONE-HALF. Buy now, first of the season at less than end-of-the-season prices. Yes! Some are slightly imperfect.

Nationally Sold Up to \$70.00

OUR PRICES

\$27⁹⁵ to \$34

LOOKOFSKY MEN'S WEAR

"Dependable Since 1912"

E. Side Square

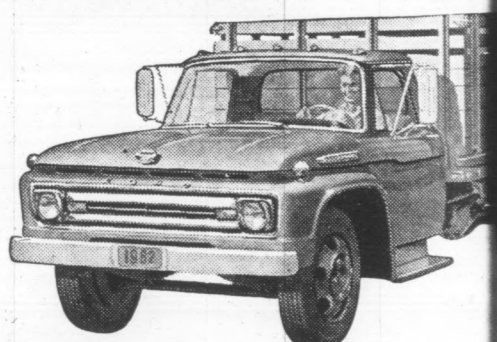
Mayfield, Ky.

COME SEE

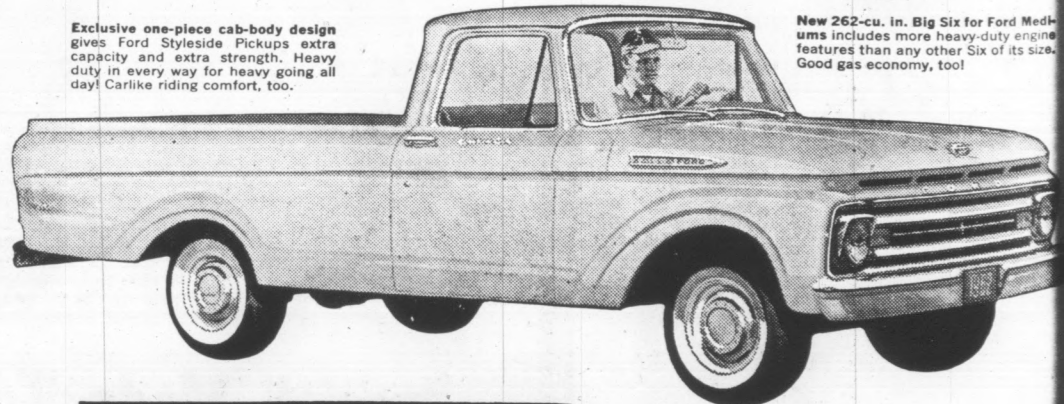
new Ford Trucks for '62



America's best selling van—and small wonder! Priced far under popular conventional 6½-ft. panels but has larger loadspace (204 cu. ft.)! It can save \$100 a year on gas, oil, tires.



New 262-cu. in. Big Six for Ford Mediums includes more heavy-duty engine features than any other Six of its size. Good gas economy, too!



Exclusive one-piece cab-body design gives Ford Styleline Pickups extra capacity and extra strength. Heavy duty in every way for heavy going all day! Carlike riding comfort, too.

COME SAVE

with full-time economy

Come meet the trucks that make saving money a full-time business... the new Ford Trucks for '62... a selection of over 600 models in all!

Come see the truck that's right for your job, whatever your job. Come see the trucks you can buy and operate at lower cost... trucks that can save you money mile after mile, load after load, year after year!

Ford's full-time economy only starts with low price. It includes savings on gas and oil. It includes savings on tire and on maintenance—wherever there's a chance to save. Come in today and let us show you how. Check out the facts. Work out a deal.

FORD TRUCKS COST LESS

COME IN!!!!

KINNEY-HIETT MOTOR CO.

Benton, Kentucky

Benton, Kentucky, Sept. 23

SCHOOLGIRLS
A group of girls at the Benton School...
...at the Benton School...
...at the Benton School...

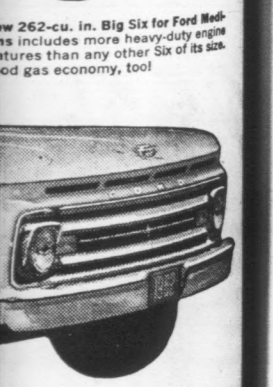
Mr. and Mrs. Earl
...at the Benton School...
...at the Benton School...

AL PURCHASE
NAME BRAND
FALL SUITS
1-2 PRICE

Unusual Cooperation
on's Best Known Member
This Savings Possible
the newest styles, patterns and
save ONE-HALF... Buy now
at less than end-of-the-season
prices. Perfect.

Sold Up to \$70.00
OUR PRICES
to \$34
OKOFSKY
N'S WEAR
ndable Since 1912"

es for '62



omy
starts with low price. It in-
cludes savings on tires

FORD TRUCKS
COST LESS

CASTLEBERRY'S

CASTLEBERRY'S

Member of the Bank of
Errett Starks of the
Marshall County at-
tended the Kentucky Bankers
Association convention held in
Louisville this week.

ATTENTION

all

DOG OWNERS

to Fit Any Size Dog. Made of the best of Leather
hold a mule, solid rings, non-rust buckle
in size and price from 3/4" wide \$1.25, to 2"
and 2 rows of sets, \$4.50. Your Name and Address
Stamped Free on Heavy Brass Name Plate on
Collar you buy. Name plates only 35c. Rancher
stuff.

COON HUNTERS LOOK

Carbide Head and Lites and Caps, Battery and
RR-18 Bulbs and 6 and 7 All Flash Lite. Best
Can Buy. Nationally Advertised Brands, Corn
ers, Compass, Horns, Long Shank Tree Climbers.
Registered Plott Hound Pups.

Closed Saturday. Open Sundays.

East of Benton on Highway 408, Turn Left 11-4 Mi.

CHARLES McDERMOTT

Daryl Story Is Honored At Party On Fifth Birthday

Miss Nancy Story honored her
nephew, Daryl Story, with a
party Saturday afternoon, Sept.
23, to celebrate his fifth birthday.
The party was given at the home
of Mr. and Mrs. Athel Story.

Games were played and en-
joyed by the little guests, with
Randy Walston, Lesta Walker
and Sandra Story as winners.
Balloon favors and candy pops
were given each guest. Ice cream
and cake were served those at-
tending: Michael, Jimmy and
Rusty Steele, Lesja, and Douglas
Walker, Debra Story, Jimmy Al-
good, Kevin Tolbert, Patty, Kev-
in and Michael Edwards, Pam,
Connie and Jeff Copeland, San-
dra Story, Tommy Riley, Terry
Lindsey, Bernice Walker, Carl,
Greg and Kevin Smith, Stan and
Randy Walston, Daryl and Sheila
Dunn.

Miss Bonnie Grubbs, Miss
Glenda Pugh and Mesdames
Bernice Walston, Robert Cope-
land, Gene Dunn, John Lindsey,
Bob Steele, Joel Smith, James
Algood, D. W. Story, Harry
Walker, J. D. Dunn, Athel Story,
Mr. and Mrs. Howard Grubbs and
the hostess, Miss Story.

Want Ads

FOR RENT OR SALE—New 3-
bedroom home. Call Lophus
Hiett, LA 7-2451 or LA 7-7793.

GO S-E-E



THEN IF YOU BUY

FILL UP

AT

CASTLEBERRY'S

IT'S THE

BEST GAS FOR LESS

AND GUARANTEED

REG. 29^{9c} GAL. PREMIUM 31^{9c} GAL.

ORMAN

CASTLEBERRY'S

SERVICE
STATION

Main St.

Benton, Ky.

THEY'RE HERE NOW 1962 FORD

THE BRAND
NEW

AUTOS AND TRUCKS

SEE THE FINEST

DRIVE THE FINEST

AT

KINNEY MOTORS

Your Friendly Ford Dealer



The Ford F-100, (top) and Falcon Sedan Delivery (bottom),
are two members of Ford's 1962 fleet of light duty trucks. The
F-100 one-half ton pickup is powered by the Ford "223" six or
optional "292" V-8, both proven economy leaders. The three-man
cab features wide-opening doors with no dogleg and handie-
operated latches that make the tailgate easy to open and close.
Standard body is the Styleside with integral cab-and-box construc-
tion. The Flareside box, with wooden floor is optional on all
F-series pickups. Standard power plant in the Falcon Sedan Delivery
is the economical 85-horsepower six; optional is a more powerful
101-horsepower engine. Low loading height and an easy-to-operate
tailgate are customer-convenience features. Styling changes include
redesigned fenders, hood line, grille and rear taillights, and new
standard and deluxe interior upholstery and trim combination in
the cab.



The top offering in Ford's station wagon line for 1962 is this
four-door, nine-passenger Country Squire (top). The power-
operated rear window is standard in this Squire as well as in the
six-passenger Country Squire and in the nine-passenger Country
Sedan. The Galaxie nine-passenger wagons have the only forward
facing third seat in the low-priced car field. Tailgate openings on
all of the wagons are more than 50" wide. This Galaxie 500 two-
door hardtop (bottom) is one of twelve models being offered in
Ford's expanded Galaxie series for 1962. The sculptured body of
the 1962 Galaxie gives the appearance of actual movement to its
unmistakably classic Ford lines. This appearance of movement is
emphasized in the recessed Thunderbird-like rear window and in
the forward thrust of the roof itself. The new Galaxie series will
feature an industry first—"Twice-a-year" maintenance.

The Ford in your future will be here tomorrow!

Starting tomorrow at your Ford Dealer's,
you will discover a line of Fords so long,
so new, so varied that everyone will find
his personal Ford—the car that fits his
pleasure and needs as precisely as though
it had been made to measure. ■ For
those who want a true luxury car, there
are two distinguished new series of
Galaxies—both swift as a rumor, silent as

a secret. With Thunderbird styling,
Thunderbird power, and quality that
sets a new industry standard, the 1962
Galaxies give you every essential feature
of far costlier fine cars. ■ If you are
looking for economy without compro-
mise, look to America's favorite compact:
this year there are more Falcons than
ever to choose from—13 in all. ■ Wagon

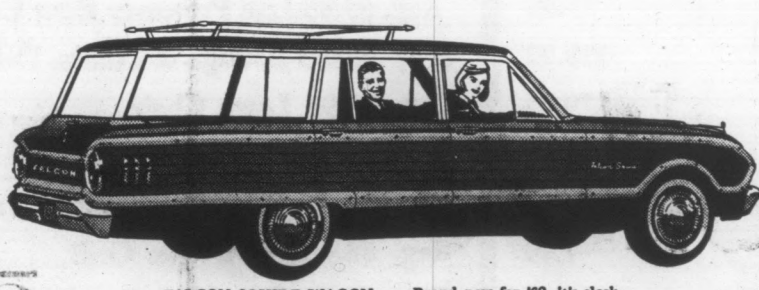
fanciers will find unprecedented variety
—from a new wagon that seats eight to a
Falcon Squire Wagon with the rich
woodlike finish of the famous Country
Squire. ■ Pick the Ford in your future
with this confidence: every 1962 Ford is
built to a standard of quality so high that
it will change all your ideas of how fine,
how quiet, how enduring a car can be.



GALAXIE 500 CLUB VICTORIA (foreground)... GALAXIE
TOWN SEDAN (background)... The Galaxie 500—new
in name, new in luxury—is for those who want all of the
elegant extras. The Galaxie makes it easier than ever

to move up to fine-car luxury—at the low Ford price. All
Galaxies are beautifully built to be more service-free.
They go 30,000 miles between major lubrications, 6,000
miles between oil changes and minor lubrications.

Brakes adjust themselves automatically. Special zinc coat-
ing protects vital body parts against rust and corrosion.



FALCON SQUIRE WAGON... Brand new for '62, it's sleek,
sophisticated... and the only compact wagon of its kind. Inside,
it is available with Futura bucket seats and a handy console!
Outside, it has steel side paneling with elegant woodlike finish.



'62
Fords

FALCON FORDOR SEDAN... Just
one of 13 Falcons for 1962, this 4-
door sedan has an improved version
of the Falcon Six engine that last
spring recorded the best gas mileage
for a Six or Eight in the 25-year
history of the Mobilgas Economy
Run. Falcon's low price for '62 makes
it America's best compact value!

Features of the future—now
KINNEY HIETT MOTOR CO.
Benton, Kentucky

GOOD YEAR 63rd BIRTHDAY SALE

SPORTING GOODS
BACK TO SCHOOL BUYS
HOME APPLIANCE SPECIALS
CHRISTMAS LAYAWAY GIFTS
EASY BUDGET TERMS



PORTABLE PHONOGRAPH

Inexpensive... and it plays all four speeds. Has front speaker for best volume, 45 RPM adapter included. Compact luggage-type carrying case is easy for youngsters to handle.

\$17⁹⁹



FREE

Pair of OIL BURNING LAMPS

Yours absolutely Free with any \$19.95 purchase

7" Ceramic figurine lamps have frosted-glass chimney that fits snugly into brass receptacle. Has kerosene reservoir and wicks.



STEREO

\$49⁹⁹

AUTOMATIC PHONOGRAPH

This dual channel, completely portable stereo is a beauty! Its detachable speaker provides true stereo sound, regardless of room size, yet it costs much less than regular stereo. Has dual sapphire needles, too, and handsome carrying case. Finally, 4 speed changer, all for as little as \$2.25 weekly.

Buy it Now... On Budget!



IRONING ENSEMBLE

\$7¹⁷

Folding T-legs are fully adjustable, for sit-or-stand ironing. Cord holder keeps cord out of your way. Also get 3-way electric outlet, polyfoam pad, non-scorch cover, and 50 ft. clothes line!

Board folds flat for easy storage.



UTILITY RUNNER

\$2⁹⁴

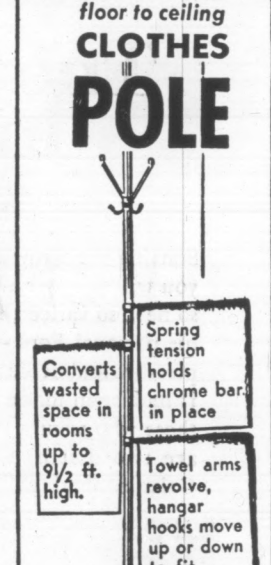
Starburst pattern runner is 5 feet long, lies flat, clings to surface, and won't bunch up or curl. Cleans with swipe from a damp cloth.



FOOTBALL WITH TEE

Great for gridders 6 to 12. Vinyl covered ball has tan pebblegram surface, white night stripes. "T" is tough polyethylene.

Now Just **\$1⁹⁷**



floor to ceiling CLOTHES POLE

Converts wasted space in rooms up to 9 1/2 ft. high.

Spring tension holds chrome bar in place

Towel arms revolve, hanger hooks move up or down to fit

\$4⁶³



SQUEEGEE SCRAPER

Pure gum rubber blade 1/4" thick, 54" fir handle, rugged handle socket. Squeegies off water cleaner, easier with one slick swipe!

\$2³³



HAND MIXER!

Hamilton Beach

Smart-styled all metal body houses bronze gears, 115 volt motor. Has speed switch in handle, ejector button for the chrome-plated beaters. A really great buy!

Yours on Easy Terms

CLOSEOUT PRICE \$9⁹⁹



INDOOR DRYER

Needs only 3" wide space to store

Plastic-covered rods

22 feet of drying space

\$3⁶³

It's ALUMINUM!



FOLDING ALUMINUM BRIDGE CHAIR

Strong 1-inch aluminum lightweight frame, 16 1/2" wide padded seat which is covered in wipe-clean white and gold pattern vinyl. Light weight, and folds flat! Ideal "extra" for parties or cards!

\$5⁸⁸

USE OUR EASY PAYMENT PLAN

END-OF-SUMMER CLEARANCE ITEMS

Reg.	SALE PRICE	Reg.	SALE PRICE
\$3.44 Air Mattress	\$ 1.99	\$1.49 Car Clothes Hanger	59c
\$39.95 Golf Clubs	27.88	\$5.98 Life Preserver Boat Cushion	2.49
\$389.95 25 H. P. Boat Motor	219.95	\$19.95 Lounge & Chairs, Deluxe	\$14.95
\$495.00 35 H.P. Boat Motor	279.95	\$4.95 Lawn Chair	3.19
\$2.50 Garden Hose—50 Ft.	1.39	\$10.95 Lounger	7.49
\$1.29 Camp Stools	49c	\$14.95 Bar-B-Que Grill with motor	10.66
\$2.19 Cool Cushions	1.49	\$8.95 Bar-B-Que Grill	6.99
\$2.29 Badminton Sets	1.00	\$1.99 Styrafoam Sun Helmet	59c
\$1.79 Package of 3 Golf Balls	99c	\$6.95 Pinic Basket	3.29

Mrs. Richardson Is Hostess To Aurora Homemakers Club

Aurora Homemakers met Sept. 20 at the home of Mrs. Henry Richardson. Fifteen members and three visitors were present. The visitors were Mes. Betty Baker, Willadene Brandon and Lora Gammon. Mrs. Gammon joined the club.

The next meeting will be held Oct. 18 at the home of Mrs.

Grace Siris. Potluck to be served. The lesson, the altering of pattern, minor lesson will be for children.

Mrs. Richard Cocke City has been a recent at the Baptist Hospital.

Mrs. Tresa M. Ruggert City Route 1 was last week at Baptist Paducah.

Subscribe to the C

New comfort—new style

the **Don Carter SPORTSMAN**

Bowling Shirts and Blouses

by **MARK TWAIN**

- 11 solid colors, 6 new two-tone combinations
- Wrinkle-resistant EVERGLAZE cotton
- Long tails... to stay in trousers
- Bi-Swing back with room to "spare"
- Button-through pockets



\$4.95 up

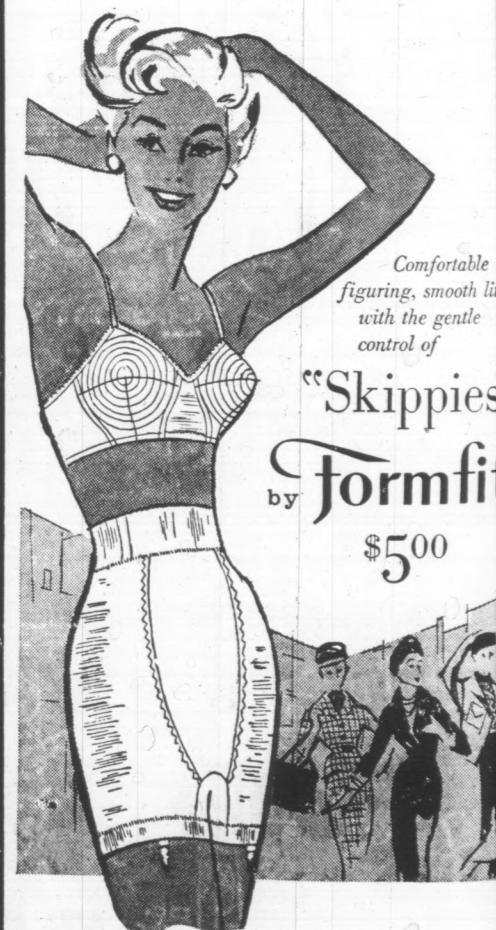
LETTERING EXTRA

HUNT'S ATHLETIC GOODS CO., INC.

115 West Broadway, Mayfield

CH 7-

Featured in your favorite magazine... featured at



Comfortable figuring, smooth lines with the gentle control of

"Skippies" Formfit

by **\$5⁰⁰**

All ease, no squeeze! Skippies give you a naturally smooth figure with the feather-light, coaxing control of gentlest elastic. Skippies Pantie No. 815 is made of long wearing nylon elastic net.

The satin elastic front panel gives an extra measure of slimming. The 2 1/4 inch waistband nips your waist. White. S.M.L. (Also available as Girdle No. 915.)

Shown with "Romance" Bra No. 566. "Nyllo-Braid" circle-stitched cups give uplift that lasts the life of the bra. Easy to launder cotton broadcloth. White. 32A to 38C.

\$2⁰⁰

OSCAR NOCHLIN CO

Mayfield, Ky.

GOOD YEAR

6th & Jefferson Sts., Paducah

Open Monday Nights

SERVICE STORE

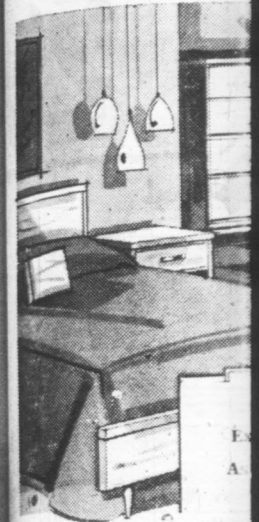
Dial 442-5464

tremendo

Easy Terms

very spec

FUR



P.C. DANISH BE

Big Triple Dresser

New. Sells Reg.

ONLY SEALY BRINGS Y



CH 7-



A SEALY BUY THAT'S

CREATABLE AT \$39.88

Sealy's Edge Guard "protects" handles from being bent or broken. It's a built-in edge support that keeps your mattress from sagging. It's a built-in edge support that keeps your mattress from sagging. It's a built-in edge support that keeps your mattress from sagging.

Sealy's Edge Guard "protects" handles from being bent or broken. It's a built-in edge support that keeps your mattress from sagging. It's a built-in edge support that keeps your mattress from sagging. It's a built-in edge support that keeps your mattress from sagging.

Sealy's Edge Guard "protects" handles from being bent or broken. It's a built-in edge support that keeps your mattress from sagging. It's a built-in edge support that keeps your mattress from sagging. It's a built-in edge support that keeps your mattress from sagging.

Sealy's Edge Guard "protects" handles from being bent or broken. It's a built-in edge support that keeps your mattress from sagging. It's a built-in edge support that keeps your mattress from sagging. It's a built-in edge support that keeps your mattress from sagging.

Sealy's Edge Guard "protects" handles from being bent or broken. It's a built-in edge support that keeps your mattress from sagging. It's a built-in edge support that keeps your mattress from sagging. It's a built-in edge support that keeps your mattress from sagging.

Sealy's Edge Guard "protects" handles from being bent or broken. It's a built-in edge support that keeps your mattress from sagging. It's a built-in edge support that keeps your mattress from sagging. It's a built-in edge support that keeps your mattress from sagging.

Sealy's Edge Guard "protects" handles from being bent or broken. It's a built-in edge support that keeps your mattress from sagging. It's a built-in edge support that keeps your mattress from sagging. It's a built-in edge support that keeps your mattress from sagging.

Sealy's Edge Guard "protects" handles from being bent or broken. It's a built-in edge support that keeps your mattress from sagging. It's a built-in edge support that keeps your mattress from sagging. It's a built-in edge support that keeps your mattress from sagging.

Sealy's Edge Guard "protects" handles from being bent or broken. It's a built-in edge support that keeps your mattress from sagging. It's a built-in edge support that keeps your mattress from sagging. It's a built-in edge support that keeps your mattress from sagging.

Sealy's Edge Guard "protects" handles from being bent or broken. It's a built-in edge support that keeps your mattress from sagging. It's a built-in edge support that keeps your mattress from sagging. It's a built-in edge support that keeps your mattress from sagging.

Sealy's Edge Guard "protects" handles from being bent or broken. It's a built-in edge support that keeps your mattress from sagging. It's a built-in edge support that keeps your mattress from sagging. It's a built-in edge support that keeps your mattress from sagging.

Sealy's Edge Guard "protects" handles from being bent or broken. It's a built-in edge support that keeps your mattress from sagging. It's a built-in edge support that keeps your mattress from sagging. It's a built-in edge support that keeps your mattress from sagging.

Sealy's Edge Guard "protects" handles from being bent or broken. It's a built-in edge support that keeps your mattress from sagging. It's a built-in edge support that keeps your mattress from sagging. It's a built-in edge support that keeps your mattress from sagging.

Sealy's Edge Guard "protects" handles from being bent or broken. It's a built-in edge support that keeps your mattress from sagging. It's a built-in edge support that keeps your mattress from sagging. It's a built-in edge support that keeps your mattress from sagging.

Sealy's Edge Guard "protects" handles from being bent or broken. It's a built-in edge support that keeps your mattress from sagging. It's a built-in edge support that keeps your mattress from sagging. It's a built-in edge support that keeps your mattress from sagging.

Sealy's Edge Guard "protects" handles from being bent or broken. It's a built-in edge support that keeps your mattress from sagging. It's a built-in edge support that keeps your mattress from sagging. It's a built-in edge support that keeps your mattress from sagging.

Sealy's Edge Guard "protects" handles from being bent or broken. It's a built-in edge support that keeps your mattress from sagging. It's a built-in edge support that keeps your mattress from sagging. It's a built-in edge support that keeps your mattress from sagging.

Sealy's Edge Guard "protects" handles from being bent or broken. It's a built-in edge support that keeps your mattress from sagging. It's a built-in edge support that keeps your mattress from sagging. It's a built-in edge support that keeps your mattress from sagging.

Sealy's Edge Guard "protects" handles from being bent or broken. It's a built-in edge support that keeps your mattress from sagging. It's a built-in edge support that keeps your mattress from sagging. It's a built-in edge support that keeps your mattress from sagging.

Sealy's Edge Guard "protects" handles from being bent or broken. It's a built-in edge support that keeps your mattress from sagging. It's a built-in edge support that keeps your mattress from sagging. It's a built-in edge support that keeps your mattress from sagging.

Sealy's Edge Guard "protects" handles from being bent or broken. It's a built-in edge support that keeps your mattress from sagging. It's a built-in edge support that keeps your mattress from sagging. It's a built-in edge support that keeps your mattress from sagging.

Sealy's Edge Guard "protects" handles from being bent or broken. It's a built-in edge support that keeps your mattress from sagging. It's a built-in edge support that keeps your mattress from sagging. It's a built-in edge support that keeps your mattress from sagging.

Sealy's Edge Guard "protects" handles from being bent or broken. It's a built-in edge support that keeps your mattress from sagging. It's a built-in edge support that keeps your mattress from sagging. It's a built-in edge support that keeps your mattress from sagging.

Sealy's Edge Guard "protects" handles from being bent or broken. It's a built-in edge support that keeps your mattress from sagging. It's a built-in edge support that keeps your mattress from sagging. It's a built-in edge support that keeps your mattress from sagging.

Sealy's Edge Guard "protects" handles from being bent or broken. It's a built-in edge support that keeps your mattress from sagging. It's a built-in edge support that keeps your mattress from sagging. It's a built-in edge support that keeps your mattress from sagging.

Sealy's Edge Guard "protects" handles from being bent or broken. It's a built-in edge support that keeps your mattress from sagging. It's a built-in edge support that keeps your mattress from sagging. It's a built-in edge support that keeps your mattress from sagging.

Sealy's Edge Guard "protects" handles from being bent or broken. It's a built-in edge support that keeps your mattress from sagging. It's a built-in edge support that keeps your mattress from sagging. It's a built-in edge support that keeps your mattress from sagging.

Free Delivery Tremendous assortment SEPTEMBER Every specially PRICED FURNITURE



DANISH BEDROOM SUITE
Big Triple Dresser—Completely
New. Sells Reg. At \$189.95
\$139⁹⁵

SEALY BRINGS YOU SO MUCH MATTRESS VALUE AT \$39.88

you must be satisfied or
WE'LL BUY IT BACK!

Features	you could pay
Edge Guard Construction	\$59.50
Heavy Damask Cover	\$59.50
Life Line Flange Construction	\$59.50
All these deluxe, costly features for only	\$39.88

SEALY GOLDEN SLEEP MATTRESS

\$39⁸⁸

Offer good only during Sealy's Golden Sleep Sale! Nobody but famous Sealy could offer such a combination of quality and features at this low price... a mattress buy so big it can't be beat! In fact, if you can find a better mattress for less money within 30 days (and you can be the judge)... buy it. Return your Sealy Golden Sleep mattress to this store for your full purchase price. Remember: you must be satisfied or we'll buy it back!

ZENITH 1962 TELEVISION



Slim, Trim—The Caribbean Model
A Real DeLuxe
Portable. Ideal for Your Bedroom.
As Low As

\$169⁵⁹

3 Pc. Early American
SECTIONAL SUITE
Foam Rubber Cushions
Reg. **\$229⁹⁵**
\$29.45 w.t.

EXTRA SPECIAL!
9x12 Wool—Extra Thick
BRAIDED RUGS
\$59⁹⁵

WENNE APPLIANCE & FURNITURE
South Main, Benton

War Books At Library

Did you know that an average of one book about the Civil War had been published every day since 1865. This fact is indicative of the great interest we Americans have in the Civil War.

There are many reasons why we show such interest in this war; the most important interest being the fact that this was "Our War." Chances are that every person had a forefather who fought either for the Blue or Grey.

The Civil War is the second largest literary subject in the world. It is second only to religion. It is an object of interest, not only in our country but also in foreign countries. Several books about the Civil War were published in Europe. It has been studied by many European military students. The great English statesman, Winston Churchill, calls it the last war between gentlemen.

One outgrowth of this interest is the Civil War Centennial, which is being held from the spring of 1961 to 1965.

During the centennial, more than half of the major battles will be re-fought in chronological order and in the place where they occurred.

Almost every southern state and several northern states have appointed their own centennial committees. These committees are working together to make the battles as authentic as possible. One southern governor jokingly asked permission to use real bullets in one of the battles.

Several southern garment makers report a flurry of orders for Civil War uniforms. Firearm manufacturers report a growing demand for reproduction

of Civil War era firearms. However, all is not rosy. Many predict that the Civil War will lose some of its charm because of the length of the centennial.

The Marshall County Library has on its shelves many Civil War books, such as recorded history, adult fiction, children's history, and an abundance of biographical books from the reading level of first readers on to the scholarly reader. They are available to anyone every afternoon from 1 to 5 p.m. at the Marshall County Library.

Darwin Lee of Hardin was a business visitor in Benton Tuesday.

My Neighbors



"Boy, is she stacked!"

Ready-Mixed CONCRETE
INSTANT USE
LIGHTWEIGHT BUILDING UNITS

Call **BENTON, KY.**
LA 7-2431
Calvert City, Ky.
EX 5-4505

Manufacturers of
CONCRETE & SLAG-LITE BLOCKS
LONG CONCRETE CO., Inc.
327 East 6th St. Benton, Ky.

Mrs. Sid Larimer of Benton went home with her daughter, Mrs. Buel Ray this week, to Murray to visit for a while.

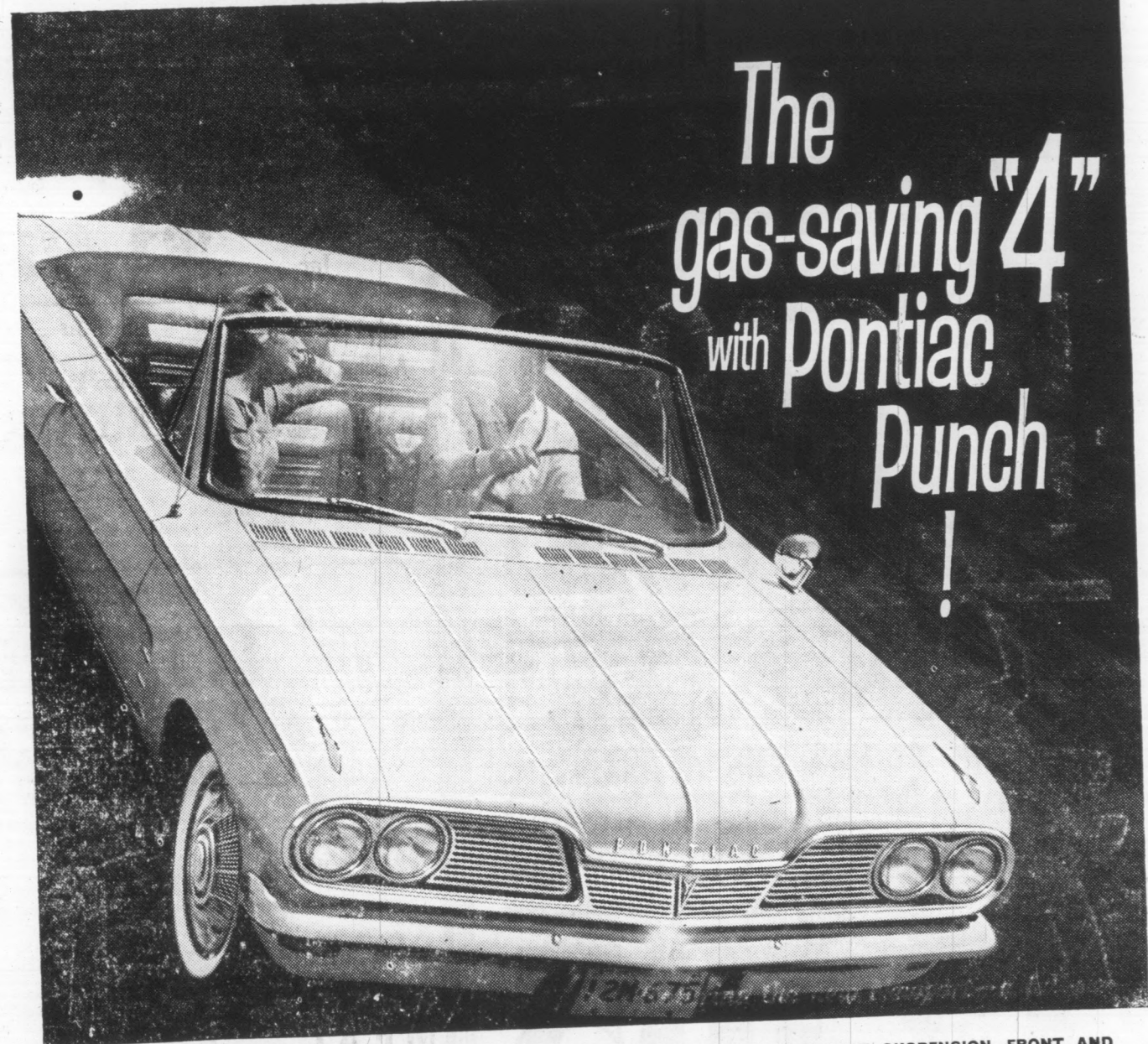
Mrs. Grace Rudolph of Mayfield and Roy Rudolph of Hopkinsville visited Mrs. H. E. Mathis Friday.

Mancraft
IS THE WORD FOR LONGER WEAR IN BOY'S SUITS

Mancraft suits are quality-tailored to stand up to the extra punishment a young man can give his clothing. Young teens especially like Mancraft suits because they're MAN-styled... just like Dad's! Superbly styled in a large selection of fabrics, colors and sizes... modestly priced from **From \$24.95**

All Mancraft boy's garments are magnificently tailored using a superb blend of choice wools and man-made fibers... assurance of better appearance through shape retention and wrinkle resistance!

Regulars — Huskies & Stouts
REECE'S STYLE-MART STORE
Corner 7th and Broadway Mayfield, Ky.



The gas-saving "4" with Pontiac Punch!

PONTIAC TRIGGERS ANOTHER TEAM OF WINNERS. Every one is a fancy mover. Convertible. Sedan. Wagon. Two Coupes. Choice of 110, 115, 120 or 140 h.p., gas-saving 4-cylinder engine. A couple of extra cost options: Put on a 4-barrel carb and get 166 h.p. The citizen who wants even more can go for an aluminum V-8 option that pulls 185 horses.

TEMPEST HAS A FRONT ENGINE/REAR TRANSMISSION! (The only American car with this feature.) It gives Tempest equal weight at every wheel. It has biting traction on the bricks or in the mud. Tires last longer. Brakes take hold like they mean it. The front floor is practically flat (no big bumps in the middle). Tempest seats six—easily!

TEMPEST HAS INDEPENDENT SUSPENSION—FRONT AND REAR! Each wheel (and it's a big 15" one) moves up and down independently of the opposite wheel. There's no solid axle in the rear. Result: Firm ride on pavement, soft ride in the boondocks! Swing axles in the rear help the Tempest to carve out clean, firm curves.

PLUSH NEW SERIES—THE LE MANS (LUH-MAHNZ). The Tempest Convertible and Coupe are out this year in special custom trim. Call them the Le Mans! They both have sports-type bucket seats, full carpeting, floor mounted stick shift, acceleration rear axle option—no extra cost. Extra cost option: 4-speed gearbox. Take one out—it's a going machine!

TODAY! '62 TEMPEST
PONTIAC'S NEW TEMPEST IS ON DISPLAY TODAY AT YOUR LOCAL AUTHORIZED PONTIAC DEALERSHIP

ROBERTS PONTIAC - OLDS MOTORS, INC.

160 West 12th

Benton, Kentucky

Mrs. Walker Funeral Will Be Held Today

Funeral services for Mrs. Ruth E. Walker, 67, who died Tuesday at her home on Benton Route 6, were held today (Thursday) at the Filbeck-Cann Funeral Chapel. Rev. T. L. Campbell officiated. Burial was in the Wilson Cemetery. Grandsons were pallbearers.

Mrs. Walker died after suffering a heart attack. Mrs. Walker was a visitor in Benton last week with her niece, Mrs. Myrtle Lewis, of Effingham, Ill., who was visiting relatives in the county.

Mrs. Walker is survived by her husband, Dave L. Walker; four daughters, Mrs. L. E. Gregory, Route 4, Mrs. Dan Travis Cornwell, Route 7, Mrs. J. C. Hicks, Taylor Center, Mich., Mrs. Wilson Hollifield, Route 4, five sons, Thomas Walker of Henderson, Ky., Harry Walker of Calvert City, Joe Walker of Route 7, John Walker of Route 1, Donald E. Walker, Ft. Benning, Ga.; one sister, Mrs. Gusta Henson of Benton.

Mrs. Blanche Booker of Louisville is visiting in the home of her daughter, Mrs. Joe Darnall in Benton.

BIRTHS

Mr. and Mrs. Nelson Cherry of Calvert City are the parents of a daughter born Wednesday, Sept. 27 at the McClain Clinic in Benton.

Mr. and Mrs. Garland Gentry of Grand Rivers are the parents of a girl born Sept. 12.

Mr. and Mrs. Jesse Bradford of Benton are the parents of a girl born Sept. 14.

Mr. and Mrs. William Borgersotck of Calvert City are the parents of a son born Sunday at Lourdes Hospital.

Mr. and Mrs. Arlie Ray Ross of Murray are the parents of a daughter, Carla Delene, born at the Murray Hospital Sept. 25. Grandparents are Mr. and Mrs. Arlie Ross of Benton and Mr. and Mrs. Buel Ray of Murray. Mrs. Sid Larimer of Benton is a great grandmother.

CARD OF THANKS

We wish to express our heartfelt thanks and appreciation to the many friends and neighbors for every act of kindness shown us during the death of our beloved son, husband and father, Donald S. Phillips.

For each expression of sympathy, the beautiful flowers, the food, and your prayers, we are very grateful.

Our special thanks to Rev. Billy G. Hurt and Rev. Paul

Lake Outing Held By Presbyterians

The choir of the First Presbyterian Church of Calvert City held a family outing on Ky. Lake Sunday afternoon, Sept. 24.

Swimming, boating and games were enjoyed throughout the afternoon, with picnic supper and weiner roast in the evening.

Present were Mr. and Mrs. Eric Hellstrom and family, Mr. and Mrs. Robert Dukes and family, Mr. and Mrs. Milton Nelson and family, Mr. and Mrs. Fred Powell and family, Mr. and Mrs. Richard Hampton.

Mr. and Mrs. Frank Tomcik and sons, Mr. and Mrs. Dwight Robb and sons, Mr. and Mrs. Jack Elcholz and family, Rev. and Mrs. George T. Hubbard, Mr. and Mrs. Hank Senman and daughters, Mr. and Mrs. George Hall and daughters, Mr. and Mrs. G. A. Nelson, Mrs. Richard Durrett and son.

Subscribe To The Courier

Dailey for their words of comfort, and to the Filbeck-Cann Funeral Home for their superior service.

May God continually bless each of you who shared in our sorrow.

Mr. and Mrs. Clet Phillips.
Mrs. Myrlene Phillips
Mrs. Charles R. Guthrie
Larry Wayne Phillips

See how you Save



Fresh Callie

PORK ROAST LB. 29

FREE 100 TV STAMPS

With This Coupon

And \$5.00 Purchase

Be Sure To Clip Coupon

FINEST BEEF

ANYWHERE

You Can Always Look To

U-TOTE-EM To Find the Best

Quality Beef Cuts



Folger's Instant

COFFEE

10 Oz.
Jar

\$1.29



Jif PEANUT BUTTER

10 Oz. Jar
39c

Libby's Fresh Frozen

POT PIES

5 FOR

\$1.00

Libby's P. A. Strawberry or P. A. Raspberry

DRINK

6 Oz.
Can

10c

Swift's Regular

ICE CREAM

1/2
GAL.

69c

Flavor Kist

GRAHAM CRACKERS

1 Lb. Box 29c

Rose

DOG FOOD

25 Lb. Bag \$2.19

Dixie Treet Self-Rising

MEAL

5 Lb. Bag 29c

Pride of Illinois

CORN,

No. 300 Can - - - 2 For 37c

Bush's Chopped

KRAUT

No. 300 Can - - - 2 For

Fresh Crisp

LETTUCE

2 Heads 25

Fresh

CARROTS

1 Lb. Cello Bag 10c

Good for Cooking

JONATHAN APPLES

4 Lb. Bag

U. S. No. 1

RED POTATOES

10lb. - Bag 39

KING'S

SUPER
MKT'S
Benton,
Kentucky



No. 1 & 2

ON DISPLAY FRIDAY, SEPT. 29th



Mercury means **MONTEREY**... the best-looking buy for the big-car man

MEET THE NEW '62 MERCURYS!!

Mercury means **COMET**... smartly ahead of the compact crowd



Mercury means

the place to see and drive the best-looking buys—now in each size

!!15 NEW MERCURYS!!

50 WESTINGHOUSE WASHERS OR DRYERS!!!

50 WESTINGHOUSE PORTABLE T.V. SETS!!!!!!

50 WESTINGHOUSE DISHWASHERS! 12,000 CAMERAS!

!12,165 PRIZES!

!!WIN ONE FREE!!

Come and see us! It's so easy to enter our new-car announcement drawing. Just pick up an entry blank, fill it out and mail it yourself! No obligation. There's nothing to buy—nothing to lose by trying! Hurry. All entries must be postmarked no later than Oct. 14.

RILEY MOTOR SALES

708 Main St.

Benton, Ky.

McField Wins Position At So. University

Illinois University announced the promotion of McField to director of academic affairs for the Department of Education effective Sept. 18. McField, a Hardin native, has been in the position for two years.

McField has been given permanent status.

Robbins, chairman of the board, said that McField will continue to teach in the department of education and sports and will also be in charge of the University of Wisconsin.

McField attended school at State College, Notre Dame, and the University of Wisconsin.

McField served as manager of the State College, Notre Dame, and the University of Wisconsin.

And Minors Wage Raise In Kentucky

An increase of 10 cents an hour in the minimum wage for women employed in grocery stores, chain stores and other retail stores in Kentucky will take effect Nov. 1.

The increase order, the first in 14 years, was issued by Kentucky Industries Commissioner after it was recommended by the State Wage Board.

The wages currently range from 40 cents an hour in some areas to 50 cents in others.

The Wage Board held a hearing on the proposed increase before recommending it be put into effect. The board has been paid minimum wages, the board said.

The son of Mr. and Mrs. J. L. Calvert, has gone to school.

Neighbors



We're here about a year—my parents have been here a year's vacation.

NEW CO MARSHALL

LET'S

GET

TO BE

RIENDS

Our bank offers you many services to make your life in the community happier.

Checking accounts —
Savings — Bank
Deposit Boxes —
Others.

We would like to be of service to you and help you in your community.

Come in and get acquainted with us.

BANK MARSHALL