

11-11-1954

## The Ledger and Times, November 11, 1954

The Ledger and Times

Follow this and additional works at: <https://digitalcommons.murraystate.edu/tlt>

---

### Recommended Citation

The Ledger and Times, "The Ledger and Times, November 11, 1954" (1954). *The Ledger & Times*. 2206.  
<https://digitalcommons.murraystate.edu/tlt/2206>

This Newspaper is brought to you for free and open access by the Newspapers at Murray State's Digital Commons. It has been accepted for inclusion in The Ledger & Times by an authorized administrator of Murray State's Digital Commons. For more information, please contact [msu.digitalcommons@murraystate.edu](mailto:msu.digitalcommons@murraystate.edu).



Largest  
Circulation In The  
City; Largest  
Circulation In  
The County

# THE LEDGER & TIMES

Largest  
Circulation In The  
City; Largest  
Circulation In  
The County

United Press

IN OUR 75th YEAR

Murray, Ky. Thursday Afternoon, November 11, 1954

MURRAY POPULATION 8,000

Vol. LXXV No. 268

## SABREJETS NOW IN ACTION OVER JAPAN

### Murray High PTA Meets On Wednesday

The Murray High School PTA met Wednesday, Nov. 3 at 2:30 p.m. in the school auditorium.

Mrs. G. M. Baker, president, opened the meeting and the devotion was given by Mrs. Ed Frank Kirk.

A variety program was presented by students from the 5th and 6th grades, which was enjoyed very much by all present.

After the reading of the minutes by Mrs. Gail Cordrey, the president recognized Miss Kathleen Patterson who is membership chairman.

Mrs. Patterson said that the Murray High PTA now has a membership of 785. The winners in the membership contest were announced.

Miss "Skinner's" third grade and Miss Patterson's first grade tied for the honor in the grade school. The ninth grade tied for the highest percentage of members in the high school.

The president presented checks in the amount of five dollars to representatives of the first and third grades. The ninth grade check is to be presented at a chapel program. The president commended Miss Patterson for her excellent work as membership chairman.

The meeting was adjourned after the PTA buy collars for the school. The exact date of the play in December entitled "Why the Bells Chimed." The money from this will be used to pay for the collars. Admission will be 15 and 25 cents. The exact date of the play will be announced later.

### Home Of Bob Laycock Burns Last Sunday

The home of Bob Laycock, three miles north of Murray, burned to the ground last Sunday night, consuming everything in the house.

Living with Mr. Laycock were his daughter, his son and wife and two small children.

The fire was noticed about 10:00 p.m. The two ladies had been waiting on Mr. Laycock, who has been ill for the past five years, and were lying down with their clothing on. They were able to rescue the two small children, and they dragged Mr. Laycock from his bed to safety.

The son was not at home at the time of the blaze. The children have shoes, but the rest of the family did not have time to get any of their clothing or shoes.

Anyone wishing to make any donation to the Laycocks may do so by leaving it at the third house on the left in the 1300 block of Payne street.

### DIRTY WORK

LOUISVILLE, Ky. — Some crooks pulled a dirty trick on Louisville drug store owner J.C. Shacklette. Besides stealing \$255 in cash and merchandise, they left black tracks all over the place. They had entered through a coal bin.

### WEATHER REPORT

LOW DOWN and Live

Southwest Kentucky. — Fair and mild today and tonight, high 72 and low 40. Partly cloudy and mild tomorrow with high near 70.

TEMPERATURES  
High Yesterday 68  
Low Last Night 36

The Murray Water System of office is the source of the daily temperature readings of the Ledger and Times.

### Veterans Day Observed

By CHARLES W. CORDRY

United Press Staff Correspondent

WASHINGTON (AP) — Air Force Secretary Harold G. Talbot gravely told a nation observing its first Veterans Day today that nuclear weapons now can abolish a whole civilization in "a single night."

Representing President Eisenhower in rites at Arlington National Cemetery, Talbot underscored a plea for world peace with the stark declaration that today's arms "can lay waste an entire continent."

His remarks were prepared for delivery shortly after the traditional silent minute was observed across the land at 11 a.m. EST in memory of the armistice that signaled the end of World War I 36 years ago. The day was marked in small town and big by religious observances, parades and patriotic addresses by top government and other officials.

Armistice Day was changed to Veterans Day under a law Mr. Eisenhower signed last June 1. The new name was deemed more fitting for a day of tribute to the 571,586 Americans who died in two world wars and Korea and to the 21 million American veterans.

The president was at his Abilene, Kan., boyhood home, dedicating two new wings of the Eisenhower museum. Later in the day he was to go to Toledo, Ohio, for duck hunting on Lake Erie.

As part of the nationwide observance, some 48,000 aliens were to take oath of citizenship in mass naturalization ceremonies in 100 towns and cities. Attorney General Herbert Brownell Jr. said in a speech at New York ceremonies that the Immigration Service is going to adopt new regulations to speed up the admission of aliens at ports of entrance.

Talbot said "we have not achieved the goal" for which the men buried in Arlington fought but are living "in a sort of armed truce." Discussing weapons which make those of past wars puny, he asserted:

"They can lay waste an entire continent, men, women, children, even the beasts and the vegetation. They can abolish, in a single night not only an army, not only a nation, but a whole civilization."

Without naming Russia, Talbot declared that "two powerful systems of government" now have "powers of absolute destruction."

He said the spirit of a free people "must be more potent than war machines that move only at man's command."

In Chicago, Deputy Defense Secretary Robert B. Anderson pledged the maintenance of superior arms against "Talbot's warning against an atomic holocaust. He said a speech prepared for the American Petroleum Institute that man now has the power to "minimize poverty, or minimize life on earth."

In Fort Worth, Tex., Army Secretary Robert T. Stevens said that America today needs tough combat soldiers more than ever before and called for a strong organized reserve built around veterans of active service.

A Scientist Disagrees With Origin Of Life

CHICAGO (AP) — Atomic scientist Harold C. Urey disagrees with the Book of Genesis about the origin of life.

Urey told a meeting of business leaders Wednesday that "life evolved through gradual chemical evolution."

As for the Biblical version that life started on the third day of creation, Urey, a Nobel prize winner, said, "I just don't believe this is correct."

Urey said "the question of how life began is one of the most complicated subjects in all science" and suggested that man will never be able to describe exactly how life began.

But he said man will be able to put together "bits and pieces."



The fine 1954 Murray High School Band will be on hand tomorrow night at 7:30 when Murray High meets the Wildcats of Trigg County.

### Final Night Of VFW Show Is Tonight

The VFW Variety show "You Can't Beat Fun" will be presented for the second and final night tonight at 7:58 at the Murray High School auditorium.

The show was presented to a full house last night and tonight's crowd is expected to be larger.

A feature of tonight's show will be crowning of the baby contest winners. Thirty-two Calloway County babies have entered the contest with the last four entries being Becky Bailey, Michael Dill, Kerry Dowdy and Warren Jenkins.

All children will be called upon the stage for the awarding of the prizes. Parents are asked to bring their children and wait in the audience until they are called to the stage.

### Class Officers Selected At MSC

Class officers and representatives to student organizations have been elected for the coming year at Murray State.

Freshmen elected were Terry Morrison, Mt. Vernon, Indiana, president; John Boggers, Murray, vice-president; Pat Wiley, Hickman, secretary; Kathy Calhoun, Vero Beach, Florida, treasurer.

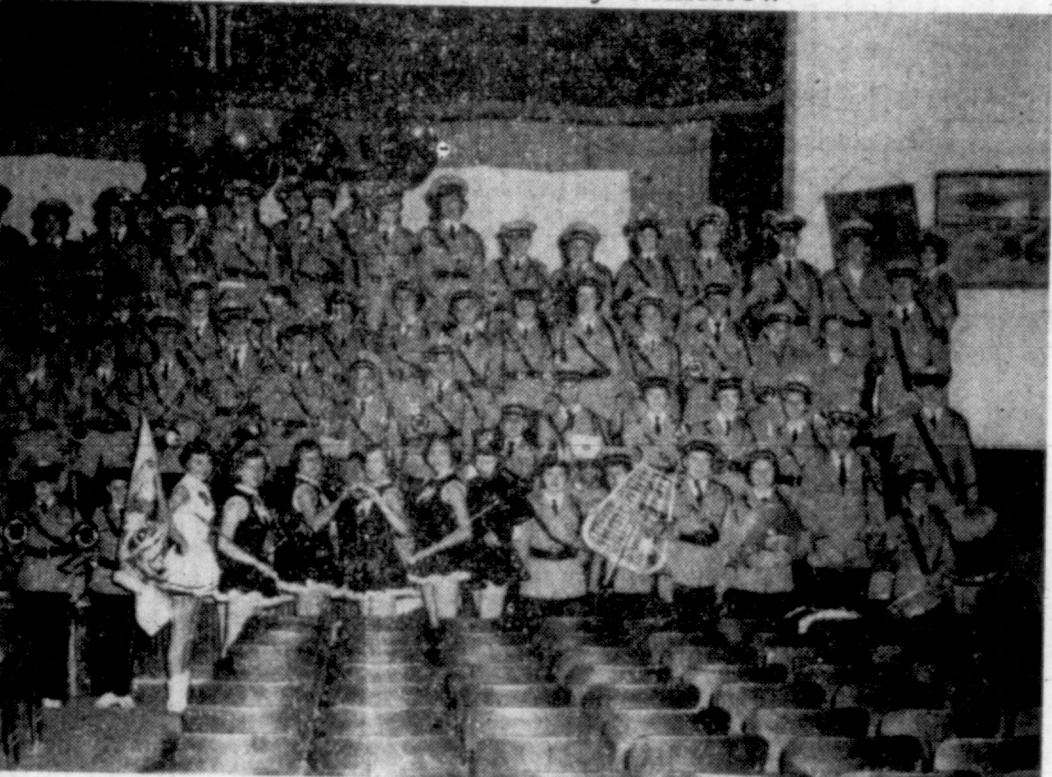
Representatives for the Freshmen are: Elizabeth Mullins, Birmingham, Alabama, vice-president; Howard Copeland, Benton, secretary; Jim Shockley, Mayfield, treasurer. Chosen as representatives were Jim Wilson, Louisville, and Bill White, Hopkinsville.

Junior officers are Bob Brahears, Frankfort, president; Don Maple, Fern Creek, vice-president; Mimi Reid, Paducah, secretary; Jim Bray, Dyersburg, Tennessee, treasurer. Bill Logan, Brownsville, and Paul Deidson, Murray are the representatives.

Elected to the senior cabinet were Jim Hearon, Clay, president; Jane Perry, Murray, vice-president; Sue Nader, Sturgis, secretary; Bill Brook, Hancok Park, Michigan, treasurer. Representatives chosen were Carl Sarten, Clinton, and Don Harvey, Providence.

This year's officers for the Student Organization are Don Hughes, Murray, president; John Ed Dunn, Cerulean, vice-president; Sue Gardner, Clarksville, Indiana, secretary; and Jim Gamble, Earlington, treasurer.

The 1954 Murray High Band Will Play Tomorrow



The Band, under the direction of Irvin Gilson, is one of the largest in West Kentucky, and has grown in quality since Mr. Gilson took charge.

Murray High Cheerleaders



The Murray High student body is led in school yells by the five attractive cheerleaders pictured above. From left to right are Rubyanna Jones, Linda Tucker, Sue Grable, Rosemary Jones and Barbara Howe.

### Former Football Player Is Named As Bank Robber

LOUISVILLE (AP) — A husky former football player who "knew all along I'd get caught" has confessed, calmly, how he masterminded the \$16,531 robbery of a First National Bank branch bank.

Henry Lee Vissman, 22, recounted details of the robbery in county jail. He said he was volunteering to tell his story because he feels he has set a bad example for the youngsters who admired him as a football player.

Vissman played football at Male High School, leaving there in 1949 to attend a small junior college in Mississippi on a football scholarship. He and his brother, Joseph Jr., 26, and a former shoe salesman, Robert Elliott, 24, are awaiting trial on federal bank robbery charges.

This, briefly, is Henry's story: "I never could rob one person, a cab driver or somebody who would suffer as an individual. Two or three days before the robbery I went into the Broadway bank for just a few seconds. They probably didn't even see me. But I remembered everything about it."

He said he read a newspaper story about the coming visit of President Eisenhower to Louisville Oct. 29 and "I knew that was the day to do it. This was the only time so many policemen would be away from the downtown area. I knew if the President ever got killed here they, the police, would never live it down."

Police since have informed Henry a full complement of police was on duty downtown at the time of

the President's visit. Most of the police at the airport for the President's arrival were on special duty.

"At 1:30 p.m. I parked on Bank Street, right behind the bank. I had a .32 caliber automatic with nine shots in the clip and one in the chamber. There were seven cars in the bank parking lot so that meant maybe 10 people in the bank."

"I walked up to the man in charge. I told all the people 'I was a holdup. I did all the talking. I told them all to be calm. I didn't want to hurt anybody. I lined all the customers up by the wall. I talked to them politely. I didn't use one cuss word."

Henry then told of standing guard at the door while a confederate carrying a five-cent shopping bag went from teller to teller collecting money.

"We got in the car and headed west. There wasn't another car in sight. We came up behind a police cruiser. The police had just got the call. We stayed right behind them when they turned but we ducked into an alley and they went on."

"I went into this little hotel and changed clothes," Henry said, and then he posed as a detective and told a woman cab driver to take him to the south end of the city. After dark they headed toward Detroit.

The Vissman brothers were arrested four days later, both driving new Cadillacs, at a police roadblock near LaGrange, Elliott, who has confessed driving the getaway car, was arrested in Michigan several days later.

### Will Fly With Recon Planes In Future For Protection

The powerful U. S. Air Force Sabrejet fleet has gone into action to protect American reconnaissance planes flying over northern Japan. The following dispatch by the United Press chief correspondent and manager for Japan tells of the tense watch now being kept for trigger happy Russian MIG fighter planes.

By RUTHERFORD FOATS  
United Press Staff Correspondent  
TOKYO (AP) — Crack American Sabrejet fighter planes are now escorting reconnaissance planes over northern Japan, ready to give battle to encroaching MIGs of the Soviet Russian Air Force.

Long-standing orders to shoot down invading Red jets have been forcefully restated.

It is indicated that both the United States and the Russian Air forces now are operating on a "shoot first" basis over or near the north Japan area.

A high American officer said that reconnaissance flights of United States Air Force planes, and mapping flights by F2Bs near the ex-plosive frontier would continue.

The new situation was disclosed less than 24 hours after President Eisenhower said in a press conference in Washington that if a fighter escort was necessary in any area where planes of this country had a right to go, then escort planes ought to be used.

The new situation arises from the shooting down by the Russians Sunday of a B29 mapping plane over northern Japan.

In that instance, the captain of the B29 did not give orders to shoot back. In the future, it is indicated, there will be no such failure to meet a Red challenge.

### Surveys Situation

I surveyed the situation over northern Hokkaido Island on a recent visit, before Sunday's attack.

There always has been a constant watch for the MIGs.

A handful of lonely American radar men watch the MIGs go through their paces every flying day.

If the MIGs get too close, U.S. fighter bases 200 miles to the west and southwest are alerted.

If the Soviet jets nose over Japanese territory, American fighter pilots scramble with order to shoot down the MIGs or chase them out.

The Russians have their bases on the Kurile Islands and Sakhalin Island, 20 to 40 miles from the Hokkaido Island coast.

American airmen believe the MIGs which shot down the B29 Sunday came from an airbase on Kunashiri, southernmost of the Kuriles, whose volcanic mountains can be seen even on cloudy days from Hokkaido's shores.

On clear days the Russia-air base, where scores of MIGs are stationed, is visible from a plane flying over Hokkaido.

### Hospital News

Wednesday's complete report follows:  
Census 28  
Adult Beds 60  
Emergency Beds 32  
Patients Admitted 4  
Patients Dismissed 0  
New Citizens 0

Patients admitted from Monday 3:30 p.m. to Noon Wednesday.

Mrs. Howard Brandon, 311 Woodland, Murray; Mr. Isaac L. Clanton, 705 Vine St., Murray; Mrs. Buster Merrell, Rt. 2, Paris, Tenn.; Mrs. E. D. Wheatley, Rt. 4, Erin, Tenn.; Mrs. Brooks McGregory and baby boy, Rt. 2, Benton; Mrs. Lloyd Green and baby girl, Linda Gail Green, Rt. 1, Benton; Master Samuel Edward Todd, Rt. 2, Murray; Mr. James A. Herndon, 314 No. 6th St., Murray.

watch for invading MIGs, the Sabrejets are now escorting reconnaissance planes instead of waiting to go up when it might be too late.

Photographic Map-Gaps  
One reason for the American determination to continue flights in the area is that there are gaps in the giant Air Force photographic maps of Hokkaido, due to bad weather which prevented the earlier completion of a mapping project.

If this frontier ever became a battlefield, the maps would be useful.

But a high officer made it clear that stubborn defense of American rights is the bigger reason for continuing the dangerous flights.

"If we can't fly where we have a perfect right to fly, we're in bad shape," he said.

Veteran airmen predict that there will be no more isolated clashes so long as the planes on both sides are jets.

In all the clashes so far, American propeller-driven planes have been dumped by the MIGs whose pilots apparently are tempted to take a liberal view of the ill-defined aerial boundary.

### 'Twenty Will Attend Farm Bureau Meet

A delegation of twenty representatives of the Calloway County Farm Bureau will attend the State Convention at Louisville next week, according to an announcement by B. W. Edmonds, President, and B. H. Dixon, Secretary.

The Convention opens Sunday Night, November 14 at the Kentucky Hotel and will continue through Wednesday Morning.

Calloway County sent in during this Farm Bureau year (ending Oct. 31) 760 members which is 10 above the quota set for the County. This is an all time high for Calloway Membership.

Membership paid in November and December will apply on the quota for next year. The state membership for 1954, which exceeded 74,000, is also the highest in the history of the State Organization.

Having won the District Talent Contest sponsored by the Kentucky Farm Bureau Federation, Don Collins, son of Mr. and Mrs. Elmer Collins of Murray, Rt. 5, will be one of five boys competing in a state wide talent contest during the Convention.

Don is a talented senior at the Murray Training School where he is active in dramatic pantomimes and his "act" in the State Contest will be a pantomime to the accompaniment of a Spike Jones Record.

He is a guest of the County and State Farm Bureau for the convention and will be trying for top prize which is \$25.00.

Members of the Calloway delegation are Mr. and Mrs. B. W. Edmonds, Mr. and Mrs. Holmes Ellis, Mr. and Mrs. Leola Chambers, Mr. and Mrs. James Harra, Mr. and Mrs. G. W. Edmonds, Mr. and Mrs. Cogswald, Mr. and Mrs. Noble Cox, Mr. and Mrs. S. V. Foy, Glendel Reeves and E. H. Dixon. Messrs. A. Carman, E. B. Howton and Ed Donoho of Murray State College and Jim Walton of Ryan Milk Company plan to attend the special Dairy section meeting on Monday.

Mr. Howton is Chairman of the program on Dairying.

### Sophomores Will Sponsor Party

The Sophomore class of Murray High School will sponsor a party after the Murray High-Trigg County football game Friday.

There will be plenty of food and entertainment. Attendance is urged since this is the last ball game party of the year.



# THE LEDGER & TIMES

PUBLISHED BY LEDGER & TIMES PUBLISHING COMPANY, Inc., Consolidation of The Murray Ledger, The Calloway Times, and The Times-Herald October 20, 1928, and the West Kentuckian, January 1942.

JAMES C. WILLIAMS, PUBLISHER

Entered at the Post Office, Murray, Kentucky, for transmission as Second Class Matter

**THE KENTUCKY PRESS ASSOCIATION**  
NATIONAL REPRESENTATIVES: WALLACE WITMER CO., 1968 Monroe, Memphis, Tenn.; 250 Park Ave., New York; 307 N. Michigan Ave., Chicago; 80 Bolyton St., Boston.

**SUBSCRIPTION RATES:** By carrier in Murray, per week 15c, per month 65c. In Calloway and adjoining counties, per year, \$3.50 elsewhere, \$5.00.

We reserve the right to reject any Advertising Letters to the Editor or Public Voice items which in our opinion are not for the best interest of our readers.

THURSDAY, NOVEMBER 11, 1954

## ALLEYS MADE OVER SO TRUCK WILL FIT

WEST POINT, Va. — A city council ordered a modification of a city ordinance to remove or relocate fences, garages, side porches and woodsheds. (4) owners of three two-story frame houses to move their houses.

The city council ordered a modification of a city ordinance to remove or relocate fences, garages, side porches and woodsheds. (4) owners of three two-story frame houses to move their houses.

Undaunted, the council ordered a modification of a city ordinance to remove or relocate fences, garages, side porches and woodsheds. (4) owners of three two-story frame houses to move their houses.

(1) the telephone company to move 30 poles; much as \$1,000 and jailed for six (3) owners of 125 pieces of prop-months.

## MANY KENTUCKIANS MUST FILE A DECLARATION OF ESTIMATED INCOME BY NOVEMBER 15.

### Who must file a declaration?

Any person who expects to receive gross income during the year of at least \$1,000, of which \$1,000 is not subject to withholding, must file a declaration. Generally, the following people will file declarations:

- Self-employed persons
- Farmers
- People with "outside" income, such as dividends, rents, royalties, interest, etc., if it is as much as \$1,000.
- People who live in Kentucky but work for an employer outside Kentucky—if the employer does not withhold Kentucky income taxes.

### What is a declaration?

It is a way of estimating during the year how much Kentucky income tax you will owe for the year. It provides for current tax payments on the income not subject to the withholding tax.

The declaration is filed on Revenue Form 740ES. These forms are available at your bank, county court house, county tax commissioner's office, the Department of Revenue, Frankfort, or one of the Department's district offices.

### When is this declaration due?

For 1954 the declaration must be filed by November 15, 1954. At that time, one-half of the estimated tax must be paid. Make check payable to "Kentucky State Treasurer" and mail with form to Department of Revenue, Frankfort. If a declaration is required and one is not filed or if it is filed late, you must pay a penalty based on the tax you should have paid. You can get help in filing from Department of Revenue District Offices in Ashland, Lexington, Louisville, Paducah, Covington, or Frankfort.

## HERE'S HOW ...

### ... MAKE A BASKETBALL BACKBOARD

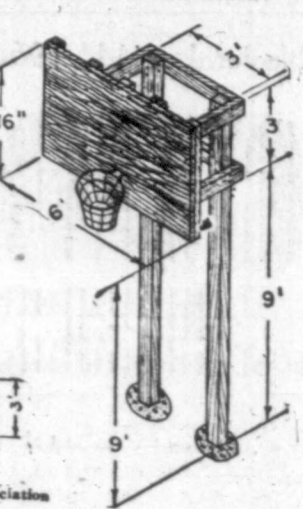
A sturdy basketball backboard provides outdoor fun and develops skill in the school child.

The posts are 4 by 4-inch lumber, each 16 feet long, set 4 feet deep in holes 29 inches apart at centers and from 8 to 12 inches in diameter. The lower 5 feet of the posts should receive a dip treatment or repeated brush application of a wood preservative before being set. Overhead bracing is of 2 by 4's. Fasten the back braces to the posts first. Plumb the posts with a carpenter's level, and secure them in place with tamped gravel, rock, or concrete.

The backboard may be of 46" 1-inch or 2-inch lumber, four 11 1/2-inch boards held together with 2 by 4 cleats. Use 3/4-inch, round-headed, carriage bolts, 3 inches long for 1-inch boards, and 4 inches long for 2-inch boards. With a No. 16 auger bit bore holes 3/8-inch deep so the bolt heads will be beneath the surface. Bore holes

3/4-inch in diameter for the body of the bolts.

Add the basketball hoop so that the rim is 1 foot from the bottom of the backboard. In fastening the backboard, be sure the bottom of the board is level with the bottom of the lower support—3 feet from the ground. Use bolts, 5/8-inch in diameter—6-inch bolts to fasten the 2 by 4's to the posts, and 4-inch bolts to fasten frame to backboard cleats.



National Lumber Manufacturers Association

## SCHOLARSHIPS FOR 4-H CLUB MEMBERS

Farm Underwriters Scholarship for \$300 were recently awarded to two girls and a boy for achievements in 4-H club work, scholarship, standing and activities in their communities. They are Shirley Ford, Ohio county; Carl F. Kounz, Jr., Oldham county, and Sarah Evelyn Payne, Shelby county. All are freshmen in the College of Agriculture and Home Economics, University of Kentucky.

In announcing the awards, State Club Leader, J. W. Whitehouse said that nearly a fourth of the total University enrollment of 3,852 students are former 4-H club members. Sixty one percent of the students of agriculture and home economics are former 4-H'ers.

## Today's Sport Parade

By OSCAR FRALEY  
United Press Sports Writer

NEW YORK up — Fraley's those "anything happens" games. Florida over Tennessee — Can go either way.

**Game of the Week**  
Ohio State over Purdue — The battered Boilermakers have the stuff to win this one if they are "tight." But you have to go for a well rounded Ohio State team which has a powerful offense and a fine defense.

**The East**  
Army over Penn — In box car figures.  
Navy over Columbia — Ditto.  
Yale over Princeton — Bouncing back with a vengeance.  
Brown over Harvard — Not easy.  
Also: Penn State over Rutgers, Boston University over Boston College, Cornell over Dartmouth, and Holy Cross over Fordham.

**The Midwest**  
Iowa over Minnesota — On line strength.  
Oklahoma over Missouri — Could be a scrap for a while.  
Wisconsin over Illinois — Murder up front.  
Northwestern over Indiana — Better than the record shows.

**The West**  
Stanford over Georgia Tech — Lo, the poor white man.  
Oregon over Washington State — Even in a disappointing season.  
California over Oregon State — Too much beef.

Stanford over San Jose State — Lo, the poor white man.  
Also: Colorado over Utah, COP over Marquette, Wyoming over Brigham Young and Denver over Utah State.

**The South**  
Alabama over Georgia Tech — The blueplate special.  
Auburn over Georgia — One of

## Attention

### Burley Tobacco Growers The Paducah Burley Floor

Located at 1010 Madison Street in Paducah Is

### Now Receiving Tobacco

FOR FIRST SALES

We still have plenty of floor space and will appreciate handling your tobacco for you.

### Sell With The Paducah Burley Floor

For Quick Sales and Best Prices

Open Day and Night for Your Convenience

## Paducah Burley Floor

Phone 23322 Paducah, Ky. 1010 Madison St.

## for Health-serve plenty of

# Creampo

BRAND

## MARGARINE

THE MARGARINE THAT IS A FAVORED, HENCE SURE SOURCE OF FOOD ELEMENTS ESSENTIAL TO HEALTH

THE ONLY MARGARINE BLENDED WITH CREAM

MADE FROM CHOICE VEGETABLE OILS BLENDED WITH FAT-FREE MILK, CREAM, AND ENRICHED WITH 15,000 UNITS OF VITAMIN A

CONTAINS 5% LIGHT CREAM

## OLEOMARGARINE

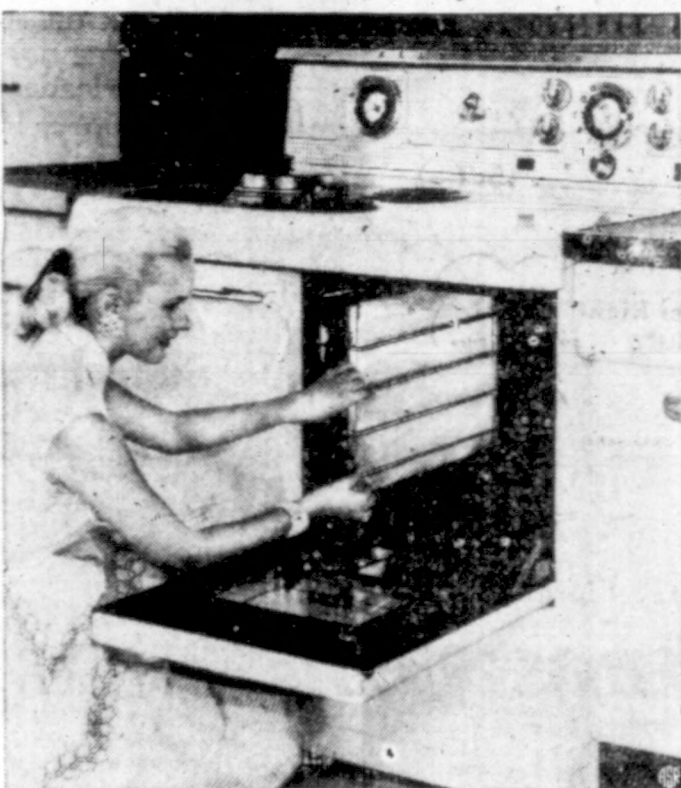
THE MARGARINE WOMEN PRAISE IN UNSOLICITED LETTERS

THE MARGARINE ONE LADY DRIVES 55 MILES TO GET

THE MARGARINE WOMEN LIKE BETTER THAN ANY SPREAD — EVEN HIGHEST PRICED KINDS

**Smoother Spreading**  
Spreads smoothly, even when cold. Never hard or brittle; doesn't tear fresh bread or toast.

## Throw It Away



NOW THEY'VE INVENTED a new way to make range ovens easier to clean, with the help of aluminum foil oven liners that you can simply throw away. Kelvinator engineers have designed special racks to hold the aluminum foil which are fitted to the oven sides. Instead of bending and scraping to clean the oven, the homemaker merely removes the side racks, disposes of the used foil, and replaces it with fresh, pre-cut sheets.

## Pic-Tours Europe

FINLAND with its 60,000 sparkling lakes and archipelago of over 100,000 islands is a paradise for devotees of sailing and other water sports.

Many groups — Farmers, business men, union members, nurses, etc. — are taking advantage of low "Inland Season" rates to visit EUROPE this fall and winter.

Strange and beautiful tropical plants flourish throughout the year in MONACO's famous "Exotic Gardens" overlooking Monte Carlo and the blue Mediterranean.

We proudly present a new approach to gracious living

There is always one that stands out above all others. Such is this incomparable new 40th Anniversary Kelvinator 120, crowning achievement of 40 pioneering years. Distinguished aid to the art of living for any hostess, it gives to your choicest foods the world's finest protection... maintains their flavorful freshness without the use of protective covers or containers. For this new refrigerator-freezer combination in one cabinet brings you the far-advanced principle of controlled moisture-balance. There is always perfect "food-keeping weather" in your Kelvinator 120. In modern convenience features this new food-keeper has no equal. Capacity is twelve cubic feet. The refrigerator compartment never needs defrosting. The frozen-food compartment is a true home freezer. Glamorous new Sea Tone styling fits the décor of any kitchen. See it today... and see the complete line of 1954 Kelvinators... all with automatic defrosting at no extra cost... all especially created to honor the 40th Anniversary of the oldest maker of electric refrigerators for the home—Kelvinator.

THE INCOMPARABLE KELVINATOR 120 — even less with your trade-in. We will be happy to arrange convenient terms.

**\$100** TRADE-IN ON your old REFRIGERATOR

## Riley's Furniture & Appliances

510 W. Main St. Phone 587



## WOMEN AND WHEELS

## Your New Car Upholstery Can Be Cleaned Easily

By Mary Lou Chapman

If Junior and his muddy-pawed puppy race through the car and Junior drops his melting chocolate bar on the seat as he goes, don't fret too much about it. There are methods to clean both mud and chocolate off the upholstery.

The most important point to remember is to clean spots and stains as soon as they occur. Don't let them set, or they'll be harder to remove.

Here is some advice on the care of your automobile interior, and some tips on stain removal.

**OTHER STAINS**  
Candy, fruit, ice-cream or beverage stains can usually be removed with very hot water. Don't be too liberal with the hot water, however. It should only be used directly on the stained area to loosen it up. Follow with fabric cleaner.

On chocolate stains use lukewarm water. Follow with cleaner.

Blood or nausea should be sponged as quickly as possible with clear cold water, followed by a washing with lukewarm water. Rinse with cold water.

Lipstick, chewing gum, tar, grease and oil can best be removed with fabric cleaner or spot remover, using a dull knife first to scrape off excess quantities.

(Fashion writer, artist, and TV personality, Miss Chapman is a native of Detroit and has spent the last several years working with automobile stylists, designers and engineers at Chrysler Corporation.)

## WOMEN AND WHEELS

## Paint Applicator Makes Car Touch-Up Easy

By Mary Lou Chapman

Once we had a cat that leaped up on our car to sun-bathe, or maybe just to see how the world looked from up there. She got up all right, but her nerve vanished when she wanted to get down again. Out came her claws as she slithered off the back deck, leaving a series of long vertical scratches. We really had a time trying to patch up the paint.

Now a new and useful gadget has appeared at our car dealer's. It would have made that paint touch-up job so much easier.

**LIKE FOUNTAIN PEN**  
It's a fascinating little thing called a paint applicator. It's about the size of a fountain pen, and it operates on the same principle, only instead of ink it contains paint to match the color of your car.

Instead of a pen point it has a little brush on the tip and there's a cap that screws on to seal it up when you're not using it. When it's closed the paint remains fresh, so you can use it once a week, once a month or once a year over a period of years.

**COVERS NICKS NICELY**  
Besides scratches, it covers nicks and chipped spots caused by flying road gravel. We have used it to touch up the painted area on our door panels, where a carelessly opened door occasionally gets banged. The applicator is such fun to use, we became very enthusiastic—but

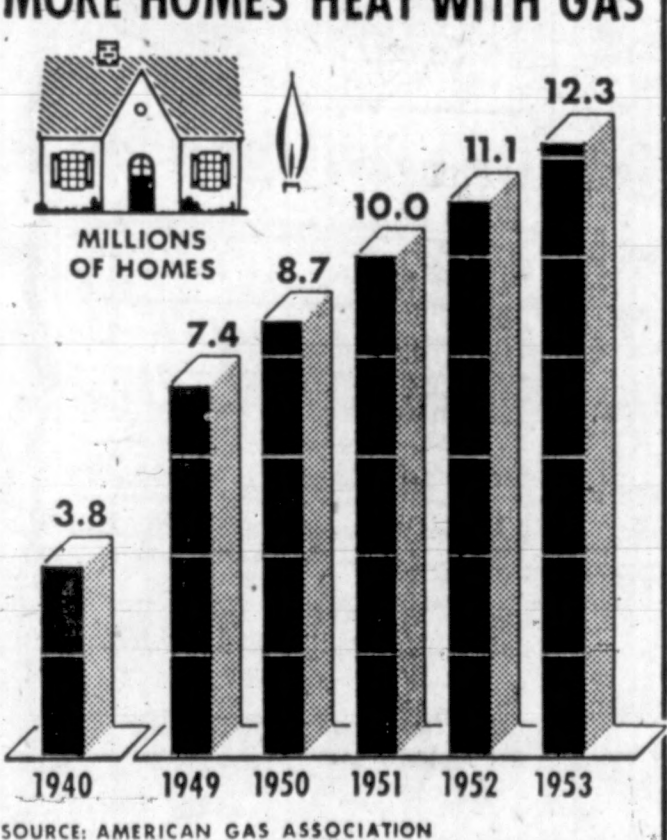
then we enjoy painting anything! Painting up these small areas prevents rust. Rust spots, by the way, are important because they can spread under the rest of the painted surface. These nicks and areas should be sanded with a small piece of sand paper or mild abrasive powder to get rid of rough edges. Take care not to enlarge the spot too much. Then your paint applicator can go into action.

**ALWAYS CONVENIENT**  
The paint applicator is so small that you can keep it right in your glove compartment. We like this feature too, because we were always misplacing that other can of paint in the garage. It was big and usually dusty and dirty.

So far only two of the auto companies have this applicator. (We would like to see all of them carry it.) The paint only comes in 1954 production colors at present, but all new colors will be matched as 1955 models appear.

(Fashion writer, artist, and TV personality, Miss Chapman is a native of Detroit and has spent the last several years working with automobile stylists, designers and engineers at Chrysler Corporation.)

## MORE HOMES HEAT WITH GAS



FOR the past five years, homes heated by gas have increased more than one million per year. New installations during this period have surpassed the total number of gas-heated homes in the entire previous history of the gas utility industry. It is estimated that more than three and one-half million additional homes will be heated by gas in the next three years.

## Tough Job To Cut Play For TV

By JACK GAVAR  
United Press Staff Correspondent  
NEW YORK (U.P.)—It's a tough job cutting a well-known drama

to less than an hour's playing time for television, but the ones who really sweat are those who have to fit a famous musical show to the picture tube.

Songs, comedy scenes and dance numbers have to be cut ruthlessly from these two and a half hour shows. Fortunately for the producers, only a comparative handful of the TV viewing millions will have seen the stage original and feel cheated of some favorite items.

A prime example of such a re-anything song and business that doesn't hook into that is automatically out.

In order to establish quick character-recognition for TV or to bridge from one scene to another later in the show, the original score may not always have the ideal songs for TV purposes. So the composer's other works may be mined for more appropriate numbers.

"For example," Styne continued, "Merman's opening song is 'Ridin' High,' which Porter wrote for 'Red Hot and Blue.'"

High, which Porter wrote for 'Red Hot and Blue.'

Finally, Styne's own song "And here's a funny switch in the way of songs. In the original stage production there was a bright little number called 'Fresh As a Daisy.' Merman was supposed to sing it. But after rehearsal began, it was decided that Betty Hutton, who was then just an up-and-coming youngster, deserved another number. So that song was re-assigned to her. Now in the TV

version, Merman finally gets to sing it as originally planned.

"Incidentally, the part Hutton played has been eliminated, so the role played on the stage by Arthur Teacher."

**QUAKER STATE LEADS**  
United States Board of Education statistics for the year 1953-1954 showed Pennsylvania leading the 48 states with 6,510 elementary public schools. Delaware trailed with 142.

What's the Sure Way to Save on Food? Come See at A&amp;P! Compare and...

## CHECK YOUR SAVINGS!

WRITE IN PRICES YOU'VE BEEN PAYING... SEE WHAT A&amp;P SAVES YOU!

Of course a few occasional low prices save you a little money. But in the long run they don't make much difference in your total food bill. It takes many regular low prices to do that. And A&P has what it takes... scores of money-savers in every department every day. What proof? Compare the typically low A&P prices in this ad with the prices you've been paying. Add up the savings they represent and see how they can cut your total food bill. Once you've made this convincing comparison, we believe you'll agree that the sure way to save money on your food is to come see... come save at A&P.



Super Right — Smoked — 12 to 16 Lb. Avg.

## HAMS

(whole or butt port. lb. 59c) Shank Portion Lb.

49c

A&amp;P's Low Price Comparative Price

A&amp;P's Low Price Comparative Price

## SUPER RIGHT FRESH

FRYERS Pan Ready—Cut-Up Tray Pack Lb. 39c ( )

Pork Roast Fresh Picnics 4 to 8 lb. avg. Lb. 33c ( )

Spare Ribs Lean Meaty (neck bones lb. 22c) Lb. 49c ( )

Pork Sausage Fresh Pork — 1 Lb. Cello 39c ( )

Chuck Roast Super Right Beef, Blade Cut Lb. 49c ( )

Beef Liver Tender Sliced (pork liver lb. 23c) Lb. 33c ( )

Sliced Bacon (Super Right lb. 59c) Allgood Lb. 57c ( )

Slab Bacon Super Right—Any Size Cut Lb. 45c ( )

## PAN READY FRESH

STEWING HENS Lb. 39c ( )

Smoked Picnics Super Right 4 to 8 lb. Avg. Lb. 39c ( )

Bologna All Meat — By The Piece Lb. 39c ( )

Ground Beef Super Right Fresh Lb. 39c ( )

Turkeys Young Toms 16 Lbs. Up Lb. 45c ( )

Breaded Shrimp Cap'n John Ready To Fry 55c ( )

Haddock or Rosefish Cap'n John — 1-Lb. 29c ( )

Cod Fillets Cap'n John Finest Quality 1-lb. pkg. 37c ( )

Just Right with "Super-Right" Pork  
A&P BRAND OUR FINEST QUALITY  
Apple Sauce  
This sweet, juicy apple sauce is A&P's finest. You see how little you pay for such fine quality!

Juicy Florida

## Oranges

OR GRAPEFRUIT 8 lb. bag 49c

DELICIOUS Red or Golden Lb. Cello Bag 49c ( )

APPLES Green Firm Heads Lb. 5c ( )

Cabbage 29c ( )

Brussel Sprouts qt. 29c ( )

Carrots Fresh Crisp 2 Lb. Cello Bag 29c ( )

Cranberries Fresh Cape Cod — 1-Lb. Cello Bag 23c ( )

Cucumbers Fancy Selects 2 For 25c ( )

GERBERS BABY FOOD (chop'd 2 jars 29c) 5 4 1/2-Oz. Jars 47c ( )

ROMAN CLEANSER BLEACH qt. 17c ( )

FRESHRAP Wax Paper 2 banded rolls (125-ft. roll) Deal 43c ( )

DURKEES OLEOMARGARINE 1-Lb. 29c ( )

NORTHERN TISSUE 3 Rolls 25c ( )

BEECHNUT Baby Food 5 4 1/2-Oz. Jars 47c ( )

RED CROSS Macaroni or Spaghetti 7-Oz. Pkg. 11c ( )

KARO SYRUP Blue Label 5 Lb. Can 55c ( )

TOMATO JUICE College Inn Cocktail 40-Oz. Can 25c ( )

KEYSTONE MUSHROOMS Button 21c ( )

GLEEM TOOTH PASTE 3 1/2-Oz. Tube 47c ( )

CALIFORNIA Emperor 2 Lb. 29c ( )

GRAPES Florida Small 8 Lb. Bag 39c ( )

Avacodas Jumbo 54 Size 2 For 25c ( )

Grapefruit 54-64 Size Pink Meat 3 For 25c ( )

Yellow Onions U.S. No. 1 3 Lb. Plof. Bag 25c ( )

Turnips Purple Top Sweet 3 Lb. For 25c ( )

Cocoanuts Fresh Honduras, reg. size 2 For 29c ( )

Gee Gee Pop Corn (In Oil 2 9 1/2-Oz. Jars 39c) 2 10-Oz. Cans 29c ( )

Regalo Pop Corn White, Yel. 2 Lb. Cello Bag 25c ( )

AMERICAN CHEESE FOOD

CHED-O-BIT 2 Lb. Loaf 75c ( )

Sharp Cheddar Cheese Lb. 59c ( )

Borden's Cheese Sauce 8-Oz. Glass 19c ( )

Swiss Cheese Domestic Lb. 63c ( )

American Cheese Mel-O-Bit Slic. 1/2-Lb. Pkg. 29c ( )

Domestic Blue Cheese Lb. 69c ( )

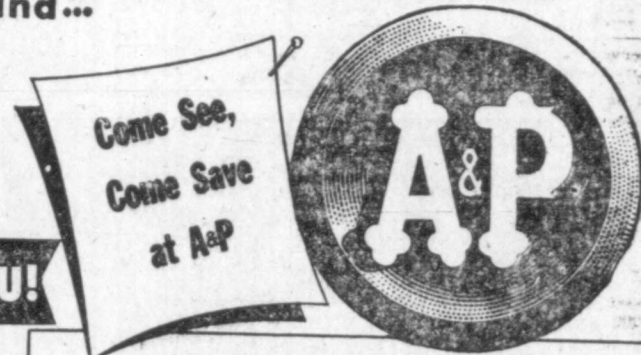
## GUARANTEED FLAVOR!

## A&amp;P Premium-Quality Coffees

We control A&P Premium-Quality Coffees from South America to you. We know they're fresh; we guarantee their rich, wonderful flavor. We'll return your money if you don't agree that they're the best coffee value on the market today!

RED CIRCLE 1-lb. f 97c 3 lb. 2.85

BOYAR 1-lb. f 99c 3 lb. 2.91



## Customers' Corner

You Can Bank on Saving at A&amp;P!

Low prices don't mean a thing, unless high quality is assured, too! You can't miss at A&P! Not only do low prices prevail in every department throughout the store every day in the week... but the quality of every thrifty purchase you make is guaranteed to please you or you get your money back without question! That makes savings certain at A&P!

So, in the interest of a balanced budget, come see... come save... at A&P!

## CUSTOMER RELATIONS DEPARTMENT

A&amp;P Food Stores

420 Lexington Avenue, New York 17, N. Y.

A&amp;P's Low Price Comparative Price

IONA PEACHES Sliced or Halves 4 29-oz. cans 99c ( )

Dandy Dill Pickles Kosher—1/2-Gal Jar 39c ( )

Salad Dressing Sultana Qt. Jar 35c ( )

Agar Luncheon Meat 3 12-oz. cans \$1 ( )

Pinto Beans Big Top Dried 5 Lb. Bag 59c ( )

Corn Iona Cream Style Golden — 16-Oz. Can 10c ( )

Chum Salmon Perfect Strike — 16-Oz. Can 37c ( )

Pineapple Chunks A&amp;P 20-Oz. Can 25c ( )

SWANSDOWN, BETTY CROCKER, PILLSBURY, DUNCAN HINES

CAKE MIXES White - Yellow - Devil's 3 Pkgs. \$1 ( )

Sweet Potatoes Blue Plate Cut—24-Oz. Can 19c ( )

Cranberry Sauce Ocean Spray — 16-Oz. Can 19c ( )

Krafts Cooking Oil Qt. 67c Pl. 35c ( )

Belle-Meade Crackers 16-Oz. Box 25c ( )

Herb Ox Bouillon Cubes Pkg. of 12 18c ( )

100% Pure Vegetable Shortening

## DEXO

3 Lb. Can 77c ( )

ANN PAGE PROVES  
Fine Foods Needn't  
Be Expensive

STRAWBERRY PRESERVES 2-LB. JAR 59c

More Ann Page Values!

Sparkle Gelatin Dessert All Flavors Pkg. 15c

Grape Jelly Ann Page Pure 12-Oz. Glass 49c

JANE PARKER GIANT SIZE

JELLY ROLL Reg. 70c 49c ( )

Angel Food Ring Jane Parker Large Size Ea. 49c ( )

Blackberry Pie Jane Parker Reg. 49c Ea. 39c ( )

Apple Raisin Coffee Cake Reg. 33c 29c ( )

White Bread Jane Parker 20-Oz. Loaf Still Only 17c ( )

All Prices in This Ad Effective Through Saturday Nov. 13th

AMERICA'S FOREMOST FOOD RETAILER SINCE 1858

A&amp;P Food Stores

THE GREAT ATLANTIC &amp; PACIFIC TEA COMPANY



## WOMEN'S PAGE

Jo Burkeen, Editor . . . Phone 694-M-40 or 1150-W

Club News Activities  
Weddings LocalsYouth Fellowship  
at Kirksey Circuit  
Meets At Church

The Methodist Youth Fellowship at the Kirksey Circuit met Tuesday, November 2, at the church home of the regular meeting.

Miss Sue Culver explained the plans of how the Christian Witness Mission would be conducted. The meeting was opened with group singing. Plans were made for the group to attend the Youth rally which is to be held at Paris, Tenn., November 28.

A round table discussion of the character of a good Christian was held after the recreational period was concluded. Donald Pace closed the meeting with a short prayer.

Refreshments were served to the following: Sue Culver, Norma Jones, Janice Pace, Claudine Manning, Bettye Smith, Billy Smith, Charles Smith, Larry Lykes, Ron Swift, Bobby Haul, Jackie Hall, Ronald Pace, Charles Parker, Easy and son, Ken.

To Spread Garden Toil Do  
All You Can This Fall

There are two kinds of fall planting—one which must be done now, or not at all and an optional kind, which may be done this fall or next spring.

Among the "musts" are planting spring flowering bulbs, peonies, iris, madonna lilies, the seeds of some perennial flowers and that of the annual larkspur.

"Musts" include evergreen and deciduous trees and shrubs, roses, the seeds of most perennial and quite a few annual flowers and vegetables, and lawn seed.

Garden owners who like to do things the easy way will spread their planting over two seasons, instead of waiting to crowd it all into a hectic spring.

In the fall there is no "spring fever," rather there may be lassitude. Like the plants themselves, the gardeners may long for a winter of dormancy, before undertaking a new season of growth.

But for those who resist the temptation to rest, fall planting pays rich rewards. In sections where winters are cold, most garden color in the early spring comes from plants in the "must" groups, which should be planted in the fall, or not at all.

In the vegetable garden, perennial onions must be planted in the fall, to bear green onions next spring, before onion sets could be planted. Rhubarb and asparagus roots may be planted now with good results. Spinach and other hardy greens can be sown, for very earliest harvest next spring.

For the asparagus bed, roots should be obtained and placed in a location which need not be disturbed during the life of the garden, since a good asparagus bed will last several decades. Deep, rich soil is required and the plants should be given ample room, with three feet each way between hills.

Rhubarb is another long lived plant. Six plants will suffice for the average family and they should be placed where they will not be disturbed, perhaps near the asparagus in a garden screen or border.

The hardiest winter onion is the red perennial, sometimes called the Egyptian. This is one of the onion which, instead of bearing seeds, produces at the

## SOCIAL CALENDAR

**Thursday, November 11**  
The Wesleyan Circle of the WMS of First Methodist Church will meet in the new educational building of the church at seven-thirty o'clock.

The Annie Allen Circle of WMS of Memorial Baptist Church will meet with Mrs. S. E. Byler at seven-thirty o'clock.

The South Murray Homemakers Club will meet with Mrs. Olin Moore, North Sixteenth Extended at one-thirty o'clock.

Donna Kay Hall, Danny Edwards, Prentice Tucker, Alton Swift, Gwendolyn Pierce, Jerry Parker, Eugene Manning, Carolyn Pierce, Mrs. Clarence Culver, Mrs. Barton Palmer, and Rev. and Mrs. Orylie Easy and son, Ken.

**Saturday, November 13**  
The Captain Wendell Curry chapter of DAR will meet with Mrs. W. S. Swann at two-thirty o'clock with Mrs. W. P. Roberts as co-hostess. All members are to contribute to the subject, "Patriotism in Colonial Times."

**Monday, November 15**  
The Penny Homemakers Club will meet with Mrs. Raymond Workman at ten o'clock.

The Young Women's Class of First Baptist Church will have a potluck supper at the Baptist Student Center, at six-forty-five o'clock. Husbands are invited.

**Sigma Department Hears Program On First Aid At Meet**

"First Aid" was the subject of the program presented at the regular meeting of the Sigma Department of the Murray Women's Club held Monday evening at seven-thirty o'clock.

Miss Ruth Cole who is the director of nursing education at Murray State College was in charge of the program. A skit relating to the program subject was presented.

Taking part in the panel discussion which was followed with a question and answer period were Misses: Paula Brunner, Edna Kemp, Janet Brasher and Rozelle Shelton who are in nursing training at MSC. Other nursing students taking part in the program were Misses Marie Hagman, Mignon Fleming, Grace Davis, and Blanche Shelton.

Preceding the main part of the program, lovely piano selections were played by Mr. Charles Markham of Murray State College. He played "Deep Purple," "Narcissus," and for his concluding number his own arrangement of "Old MacDonald Had A Farm." He was introduced by Mrs. Purdum Outing.

Mrs. Wilbur McDermott, chairman, presided at the meeting during which plans were made for the Children's Christmas party.

Refreshment were served by the hostesses who were Mrs. Philip Mitchell, Mrs. Castle Purser, Mrs. Harold Gish, Mrs. W. J. McCarty, and Mrs. Bennie Simmons.

**Buckingham Home Scene Of Euzeian Meeting On Monday**

The Euzeian Club of the First Baptist Church held its monthly meeting in the home of Mrs. Ray Buckingham on Sunday evening at seven-thirty o'clock with Group II in charge.

Mr. Harry Hampshire, minister of music of the church, was the devotional speaker for the evening. He gave a most inspirational talk with his Scripture being taken from the book of Psalms.

The opening prayer was read by Mrs. Berlie Ducey, Mrs. Jack Kennedy, president, presided at the business meeting. The minutes of the last meeting were read by Mrs. Hall Hick, secretary.

Delicious refreshments were served to the thirty-eight persons present after which a social hour was enjoyed with Mrs. Earl Miller, local chairman, as leader.

**FEEDING NEEDY PUPILS**  
Count Rumford of Germany began the custom of feeding needy school children when, in 1790, he invited indigent hungry pupils to the municipal soup kitchens of Munich, Bavaria.

**CAPITOL**  
FRIDAY and SAT.

Two Favorite Stars in a Two-Gun Blast of Action and Songs  
**BILL ELLIOTT**  
and  
**TEX RITTER**  
in  
"The LONE STAR VIGILANTES"

**Friday and SAT.**

They're **JUNGLE HAPPY** Now... In Their Funniest Yet!

**LEO HUNTZ**  
**GORCEY HALL** and **Bowery Boys**  
**Jungle Gents**  
with **LAURETTE LUEZ**  
and **Bernard Gorcey**  
— ALLIED ARTISTS PRESENT —

**LAST TIMES TONIGHT**  
George Montgomery and Mary Howard  
in "RIDERS OF THE PURPLE SAGE"

**CAPITOL**  
FRIDAY and SAT.

Two Favorite Stars in a Two-Gun Blast of Action and Songs  
**BILL ELLIOTT**  
and  
**TEX RITTER**  
in  
"The LONE STAR VIGILANTES"

**ART SCHOOLS FAIRLY NEW**  
The institutional art school is of fairly recent origination. During the Middle Ages the great masters often gave art instruction occasionally to individuals but hardly ever to a group.

Grow Christmas Flowers  
with Bulbs in Bowls

Growing flowers for Christmas in a living room is not easy, but it can be done if Paper White Narcissus bulbs are started Nov. 1, and grown in carefully regulated temperatures. Without such time to reach the stage where they are ready to grow. When planted, they first must produce roots, since top growth without good roots is weak, and seldom flowers.

"Forcing" is the florist's word for making a plant flower out of season, and the formula for accomplishing this is much the same with all bulbs. Bulbs develop, even in storage; and take time to reach the stage where they are ready to grow. When planted, they first must produce roots, since top growth without good roots is weak, and seldom flowers.

Paper White narcissi, planted in bowls filled with gravel or perl chips and water, should be kept in a temperature below 60 degrees for four weeks; preferably in dim light. When root growth is sufficient, top growth will begin, and then they should have all the light possible. Best flowers will result when the temperature never exceeds 70 degrees; keep them away from radiators and steam pipes, and out of overheated living rooms.

Instead of gravel, bowls may be filled with bulb fibre, or potting soil. Containers should be deep enough to allow two inches of gravel, fibre or soil below them. Set the bulbs close together but do not let them touch; and only the necks should emerge from the soil.

Yellow Paper Whites (soil d'or) and Narcissus Early Perfection can also be grown by these methods; but they take longer to make flowers. The best time to start all this is Dec. 1, or later when the bulbs have fully developed.

Large bulbs of hyacinths can be grown in water in special glasses. The glasses support the bulbs just above the water, into

## Murray Hospital

Monday's complete report follows:

Census	30
Adult Beds	60
Emergency Beds	30
Patients Admitted	7
Patients Dismissed	3
New Citizens	3

Patients admitted from Friday at 4:00 p.m. to Monday 3:30 p.m.  
Mrs. Jessie Stom, 113 So. 10th St., Murray; Mrs. Howard Nolan, Rt. 3, Cadiz; Mrs. David Mason, Wells Hall, Murray; Mrs. Charles

Jeffrey, Rt. 1, Dexter; Mrs. Thomas Bucy, Rt. 5, Murray; Mrs. Almie Gildwell, Wingo; Mrs. Charles Norwood and baby girl, Rt. 1,

Hardin; Mrs. Alvin Richard Mar- enco, Golden Pond; Mrs. Ray Boggett and baby girl, Dover; Tom; Mrs. Joshua Tabers and baby girl, Rt. 2, Farmington; Mrs.

Otis Steel, Jr., Model, Tenn.; Mrs. Mae Bone and baby boy, 56 Robin Rd., Hopkinsville; Mrs. Thomas Hopkins and baby girl, B756 Cane

Run Rd., Louisville; Miss Sharon Kay Davis, Rt. 3, Hazel; Master Kenneth Wade Norworthy, Swann's Apt. 3, Paris, Rd., Mayfield; Miss Deborah Ann Tabers, Rt. 2, Farmington.



Long, low convactor radiators of modern design, installed beneath the window areas in the living and dining rooms of this modern apartment, supply dependable warmth for cold winter days and blend unobtrusively with the furnishings. Flowered drapes which hang to the floor help frame the modern heating units as well as the window.

## ADAM'S Shoe Store



soft-as-a-glove suede

complete flexibility...  
complete comfort  
in the softest shoes that ever walked

**Naturalizer**  
THE SHOE WITH THE BEAUTIFUL FIT

Beautiful new fashion tested shoes designed to compliment your Fall Wardrobe. Naturalizer's heel hugging combination lasts guarantee toe-free fit that eliminates gapping, pinching and slipping.

Telephone 106-W

Murray, Ky.

LOTS and LOTS of PARKING SPACE

Get a load of these...

**FOOD VALUES**

**Pork Sausage 3 lb \$1**

Swifts Premium **BACON lb. 49c**

4 Rolls Diamond Toilet Tissues . . . 29c

Vienna Sausage . . . 2 for 25c

Sealtest Ice Cream . . 1/2-Gal 79c

Sledd's Peanut Butter . qt. 61c

Hunts Tomato Sauce 3 for 25c

Libbys CHILI CON CARNE 2 cans 49c

HIENZ BABY FOOD Junior . . . 3 for 43c Strained . . . 3 for 49c

Cut-Up - Pan-Ready **Fryers lb 37c**

GRAPES 2 LBS. 25c

Grapefruit 5c ea.

Oranges --- 2 doz. 39c

Quaker Oats . . . 2 boxes 35c

Mackeral . . . tall can 49c

Yukon Flour . 25 lb. bag 1.89

Ivory Soap, lrg. . . 2 for 25c

Premium Crackers . 1 lb. 23c

Call 1975 For Delivery To Your Door

**Johnson Grocery**  
At City Limits On Hazel Highway  
Telephone 1975



# WHO LEFT THIS PORPOISE ON OUR LAWN?



ALL IS PERPLEXITY in the Leo Vollowitz family in Los Angeles as members look at a 6 1/2-foot, 200-pound porpoise on their front lawn. Leo awoke, looked out the window and for a moment thought he was on a boat or dreaming. He doesn't have any idea how or why it got there. Shown with Leo are (from left) Bobby, 7; Evelyn, 14; Mrs. Esther Vollowitz; Eileen, 4. (International Soundphoto)

## All-Season Door Increases Comfort in Any Weather

One modern door can take the place of two older types. Appropriately called the "combination door," it makes use of interchangeable inserts to perform the functions of separate storm and screen doors.

The ponderosa pine "door blank" — the side, top, and bottom pieces, the heaviest part of the door, need never be taken off its hinges. The blank serves as a frame for a half-inch panel, which are changed according to the season.

When a screen insert is used during warm weather, the door is a screen door. When a glass insert is used during winter, it's a storm door. Inserts can be changed with ordinary household tools or no tools at all.

Convenience is one big advantage of a ponderosa pine combination door. Changing inserts is an easy task. Little storage space is needed for the insert not in use. Economy is another factor in the combination door's appeal. Roughly equivalent to a door-and-a-half in material and labor need, it costs less than two complete doors.

When a combination door is used as a storm door, the dead air space between it and the regular door serves as insulation, keeping warm air in and cold air out. This eliminates drafts and reduces fuel consumption. In a house fully equipped with ponderosa pine storm doors and window storm sash, heating costs usually are reduced 15 to 30 percent.

Combination doors are made in



A storm door in winter and a screen door in summer, a ponderosa pine combination door is converted for seasonal use by replacing one panel by another.

a variety of designs to suit any architectural style and in sizes to fit any doorway. Some types have decorative metal grilles or lower panels. In one variation of the combination door, the screen always stays in place; in winter, the storm insert covers the screen on the outside.

## Defective Water Heater Kills 10

Next week, November 14-20, will be "Diabetes Detection Week in Kentucky." All Kentuckians will have a chance to get free tests for diabetes as part of the annual diabetes detection drive sponsored by the Kentucky State Medical Association.

All of the 1,900 physicians who are members of the medical association have been requested to give a free urine sugar test to every person requesting it during the week. Hospitals and laboratories are also cooperating in the campaign to save lives by discovering previously diabetics.

"Each previously undiscovered case of diabetes uncovered through the drive represents a useful, happy life saved which might otherwise be lost," said Carlisle Morse, M. D., Louisville, chairman of the K.S.M.A. Diabetes Committee as he urged all Kentuckians to avail themselves of the free

tests. "With the control measures now the Kentucky Junior Chamber of Commerce, the Kentucky Hospital Association, the Kentucky Rural Age person, with diabetes mayHealth Council and the State even expect to live longer thanDepartment of Health.

many non-diabetics," Dr. Morse said. "Because such controls exist, every person should regularly check to see if they are suspect. The Diabetes Detection Drive affords such an opportunity each year without cost. With full public cooperation, it can help us achieve a real victory over diabetes."

Governor Lawrence W. Wetherby has proclaimed November 14-20 as "Diabetes Detection Week in Kentucky." The campaign is also endorsed by numerous state-wide organizations including the following: the Kentucky Congress of Parents and Teachers, the Ken-

tucky Federation of Women's Clubs of possible through insulin, diet, orCommerce, the Kentucky Hospital age person, with diabetes mayHealth Council and the State even expect to live longer thanDepartment of Health.

Parents and Teachers, the Ken-

Parents and Teachers, the Ken-

Parents and Teachers, the Ken-

Parents and Teachers, the Ken-

Parents and Teachers, the Ken-

Parents and Teachers, the Ken-

Parents and Teachers, the Ken-

Parents and Teachers, the Ken-

Parents and Teachers, the Ken-

Parents and Teachers, the Ken-

Parents and Teachers, the Ken-

Parents and Teachers, the Ken-

Parents and Teachers, the Ken-

Parents and Teachers, the Ken-

Parents and Teachers, the Ken-

Parents and Teachers, the Ken-

Parents and Teachers, the Ken-

Parents and Teachers, the Ken-

Parents and Teachers, the Ken-

Parents and Teachers, the Ken-

Parents and Teachers, the Ken-

Parents and Teachers, the Ken-

Parents and Teachers, the Ken-

Parents and Teachers, the Ken-

Parents and Teachers, the Ken-

Parents and Teachers, the Ken-

Parents and Teachers, the Ken-

Parents and Teachers, the Ken-

Parents and Teachers, the Ken-

Parents and Teachers, the Ken-

Parents and Teachers, the Ken-

Parents and Teachers, the Ken-

Parents and Teachers, the Ken-

Parents and Teachers, the Ken-

Parents and Teachers, the Ken-

Parents and Teachers, the Ken-

Parents and Teachers, the Ken-

Parents and Teachers, the Ken-

Parents and Teachers, the Ken-

Parents and Teachers, the Ken-

Parents and Teachers, the Ken-

Parents and Teachers, the Ken-

Parents and Teachers, the Ken-

Parents and Teachers, the Ken-

Parents and Teachers, the Ken-

Parents and Teachers, the Ken-

Parents and Teachers, the Ken-

Parents and Teachers, the Ken-

Parents and Teachers, the Ken-

Parents and Teachers, the Ken-

Parents and Teachers, the Ken-

Parents and Teachers, the Ken-

Parents and Teachers, the Ken-

Parents and Teachers, the Ken-

Parents and Teachers, the Ken-

Parents and Teachers, the Ken-

Parents and Teachers, the Ken-

Parents and Teachers, the Ken-

Parents and Teachers, the Ken-

Parents and Teachers, the Ken-

Parents and Teachers, the Ken-

Parents and Teachers, the Ken-

Parents and Teachers, the Ken-

Parents and Teachers, the Ken-

Parents and Teachers, the Ken-

Parents and Teachers, the Ken-

Parents and Teachers, the Ken-

Parents and Teachers, the Ken-

Parents and Teachers, the Ken-

Parents and Teachers, the Ken-

Parents and Teachers, the Ken-

Parents and Teachers, the Ken-

Parents and Teachers, the Ken-

Parents and Teachers, the Ken-

Parents and Teachers, the Ken-

Parents and Teachers, the Ken-

Parents and Teachers, the Ken-

Parents and Teachers, the Ken-

Parents and Teachers, the Ken-

Parents and Teachers, the Ken-

Parents and Teachers, the Ken-

Parents and Teachers, the Ken-

Parents and Teachers, the Ken-

Parents and Teachers, the Ken-

Parents and Teachers, the Ken-

Parents and Teachers, the Ken-

Parents and Teachers, the Ken-

Parents and Teachers, the Ken-

Parents and Teachers, the Ken-

Parents and Teachers, the Ken-

Parents and Teachers, the Ken-

Parents and Teachers, the Ken-

Parents and Teachers, the Ken-

Parents and Teachers, the Ken-

Parents and Teachers, the Ken-

Parents and Teachers, the Ken-

Parents and Teachers, the Ken-

Parents and Teachers, the Ken-

Parents and Teachers, the Ken-

Parents and Teachers, the Ken-

Parents and Teachers, the Ken-

Parents and Teachers, the Ken-

Parents and Teachers, the Ken-

Parents and Teachers, the Ken-

Parents and Teachers, the Ken-

Parents and Teachers, the Ken-

Parents and Teachers, the Ken-

Parents and Teachers, the Ken-

Parents and Teachers, the Ken-

Parents and Teachers, the Ken-

Parents and Teachers, the Ken-

Parents and Teachers, the Ken-

Parents and Teachers, the Ken-

Parents and Teachers, the Ken-

Parents and Teachers, the Ken-

Parents and Teachers, the Ken-

Parents and Teachers, the Ken-

Parents and Teachers, the Ken-

Parents and Teachers, the Ken-

Parents and Teachers, the Ken-

Parents and Teachers, the Ken-

Parents and Teachers, the Ken-

Parents and Teachers, the Ken-

Parents and Teachers, the Ken-

Parents and Teachers, the Ken-

Parents and Teachers, the Ken-

Parents and Teachers, the Ken-

Parents and Teachers, the Ken-



## Thunderbird Gave Hint Of New Ford

Ford's new personal car, the Thunderbird, which gave an advance hint of the 1955 Ford styling trend when it was unveiled earlier this year is now on display in dealers' showrooms in most parts of the country. Deliveries of the first production models began in many cities October 22.

The Thunderbird, with its all-steel body, is the first "personal car" of American manufacture. Ford engineers designed it for a combination of high performance with comfort, convenience and safety of a conventional car. It measures just four feet, four and 210 inches high in the hardtop model, but the Thunderbird will accommodate three people, with rear compartment space for their luggage. The adjustable steering wheel slides in or out three inches, and is locked in the position the driver desires. A power seat is standard equipment.

Power steering, power window lifts, and power brakes, are available at extra cost, the same convenience features available in the full Ford car line. Roll-up windows and the hardtop give the car year-round utility in any climate.

The car's outstanding performance in all speed ranges is provided by a high-torque Ford V-8 engine of 292 cubic inches displacement with 3.75 inch bore and 3.30 inch stroke. Compression ratios are 8.1:1 with standard transmission and 6.5:1 with Fordomatic. The engine is equipped with standard transmission, Fordomatic and overdrive are available options.

Most of the car's parts are interchangeable with regular 1955 Fords, so it can be serviced quickly by any Ford dealer.

## Ford Offers Variety Of Engines

Ford's 1955 line of passenger cars will offer buyers a choice of two new, modern design V-8 engines, 182 and 162 horsepower and a new I-Block 6-cylinder engine of 120 horsepower.

Added power designed into all of the new Ford engines provides greatly increased torque at start-up and passing speeds.

The new high-compression 182-horsepower V-8 has a 272 cubic inch displacement and a 8.5:1 compression ratio. It is available only with Fordomatic transmission on the new Fairlane and Station Wagon series.

Ford's new 162-horsepower V-8 engine — up 32 horsepower from the 1954 Ford V-8 — has a 272 cubic inch displacement and a 7.6:1 compression ratio. It is available with any of the sixteen Ford models for 1955.

The 120-horsepower overhead valve 6-cylinder Ford engine has a 223 cubic inch displacement and a 7.5:1 compression ratio. It also is available with all models.

**WHEN WOLVERINE WAS CUB**  
The University of Michigan, founded in 1817, at Ann Arbor, Mich., by 1852 had only six on the faculty, a mere 72 students and a single course of study. Today it has some 19,000 students and a faculty of well over 1,000 teachers.

**LOW COST AUTO INSURANCE**  
Pay While You Drive  
383 Main Street, Phone 842  
AUGUST F. WILSON, Agent

## MURRAY Drive-In THEATRE

THURSDAY and FRIDAY  
"BENGAL BRIGADE"  
starring Rock Hudson

SATURDAY  
"LONE HAND"  
with Joel McCrea

SUNDAY and MONDAY  
"HERE COMES THE GROOM"  
starring Bing Crosby

We will show all this week, but after this week we will show only on Saturday, Sunday and Monday until further notice.



## Groucho Shoots Palace Guard

Caught in the act of shooting a shako is that rabid home movie fan and laugh producer, Groucho Marx. The production he'd really like you to see is the beautiful, new De Soto for '55. The only new car that is styled for tomorrow. Premiere at your De Soto dealer's showroom November 17. Go see it!

'55 DE SOTO ON DISPLAY WED., NOV. 17

## Read Today's Classifieds

### WHERE U. S. PLANE WAS DOWNED



ARROW INDICATES Nemuro strait at northernmost tip of Japan's Hokkaido island, where the U. S. RB-29 photo mapping plane, was fired upon by Russian MIG fighters. The plane, with 11 crewmen, made land before the crew bailed out. One was killed.

## 6,891 Attend Trade Schools

Frankfort, Ky. — Kentucky's fourteen area trade school centers and high schools offering trade, industrial and distributive courses reported a total enrollment of 6,891 persons for the first month of the present school year, the State Department of Education's Division of Vocational Education reported today.

The number included 1,845 in evening extension classes, and 1,063 veterans in pre-employment courses. Classes for veterans have been started at the Jefferson County Vocational School, Valley Station, and Tighman Trade School, Paducah, this year. Apprentices enrolled for related training totaled 512.

Enrollment at each of the area trade school centers were: Ashland Vocational School, Ashland, 519; Harlan County Vocational School, Harlan, 232; Hazard Vocational School, Hazard, 262; Jefferson County Vocational School, Valley Station, 185; Lafayette Vocational School, Lexington, 435; Madisonville Trade School, Madisonville, 286.

Louisville Vocational Schools, Louisville, 2,067; Mayo State Vocational School, Paintsville, 762; Northern Kentucky State Vocational School, Covington, 333; Owensboro Trade School, Owensboro, 400; Tighman Trade School, Paducah, 199; Somerset Vocational School, Somerset, 415; Western Trade School, Bowling Green, 219; West Kentucky Vocational School, Paducah, 172 and High Schools, 255.

## Linoleum Headquarters

9x12 Ft. Wide, Cut any length  
40 Patterns To Choose From  
Thurman Furniture

## Hurry DRIVE DOWN TO Sue & Charlies

Aurora Road — on Kentucky Lake — Telephone 623-J  
For A Delicious Fish Dinner  
All You Can Eat With Our Delectable Hush Puppies!  
Be Sure To Visit Us Before We Close  
8:30 P.M., NOV. 14th

# NOW During Colonial's Appreciation Month SAVE 10¢ A POUND

Drink Finer Coffee Too!

In appreciation for the reception you have given Colonial Coffee in this area, the Colonial Coffee Company now gives you an opportunity to enjoy it at a really worth while saving.

For each bottom of a Colonial Coffee bag, or winding strip from a Colonial Coffee can you take to your grocers, he will:

1. Give you 10¢ in cash, or,
2. Credit you with 10¢ on the purchase price of a pound of Grand Colonial Coffee.

Don't miss this opportunity to enjoy one of America's finest coffees, and save money at the same time. Save each Colonial Coffee bag, the winding strip from each can of grand Colonial Coffee. They're worth 10¢ in cash or credit at your grocers.

This amazing offer is good only in this area, and only for one month. Be sure to take advantage of it. You'll enjoy Colonial Coffee. It's a blend of five of the world's finest coffee varieties. And you'll welcome a chance to enjoy it at the saving this offer gives you. So — buy a pound of Colonial Coffee today!

Offer Closes November 30



## COLONIAL

One of America's finest COFFEES



## Christian Church Heads Will Meet

Leaders of the Christian Churches in this area will meet on Wednesday, Nov. 10, at Mayfield in the First Christian Church. Congregational officers and leaders of the Men's, Women's, Youth and Children's work in each church

in Ballard, Graves, Marshall, Calloway, Hickman, Carlisle, Livingston, Fulton and McCracken Counties have been invited to participate in this convention.

The meeting at Mayfield is one of a series of 16 conventions being held in Kentucky this month (November). Harvey Beasley of Kevil district president, will preside over the convention which is scheduled to begin at 2:30 p.m.

Throughout the state the District Conventions will be focusing attention on the state-wide program of the Christian Church. The major portion of the convention time will be devoted to a study

of reports from the churches in this area. During the past year these churches have been emphasizing evangelism, and in this year stewardship will be stressed. Local church reports on these two areas will receive special attention.

The state-wide program for Christian education and missions will be presented. A team of guest leaders will take the lead in presenting the convention program.

The team will be led by Orville M. Skeen of Lexington. The team pastor will be Dr. Paul Stauffer, minister of First Christian Church of Louisville and former president of the Kentucky Convention of Christian Churches.

Other team members are Dr. Frank A. Rose, president of Transylvania College in Lexington; Miss Mary Ellen LaRue of Lexington, executive secretary of the Kentucky Christian Men's Fellowship.

In a statement about the forthcoming conventions, State President Moak said, "The 16 district conventions are a part of the overall program of the State Convention of the Christian Churches. More than 600 Christian Churches in Kentucky cooperate in the total program."

## FORECASTS CENSURE VOTING



SENATOR JOSEPH MCCARTHY (R), Wisconsin, shown preparing to speak before TV cameras in Washington, said he expects Senate Democrats and liberal Republicans to "go down the line" in voting to censure him.

## EPISCOPALIANS—TAKE NOTICE

The "Parish by Mail", an undertaking of the Episcopal Church in Kentucky, wishes to take its ministrations to the members where Church attendance is difficult.

Many must feel a hunger for their own service and a desire that their children should have religious training.

"The Parish by Mail" wishes the names of all Episcopalians or any interested in the Episcopal Church, that it may keep in close contact with them and arrange for any service needed. Especially does the "Parish by Mail" wish the names of the dead and those who are blind, in order to minister to them.

Please write at once to the Director, Mrs. H. L. Maury, "Parish by Mail", 421 Second Street, Louisville 2, Kentucky, who is ready and most willing to serve you.

## FREE RIDE

PITTSFIELD, Mass. — Mrs. Katie Hoffman got an unexpected present on her 80th birthday. Mohawk Airlines gave her a round-trip ticket to Utica, N. Y., to visit a niece. Mrs. Hoffman had never been in an airplane.

## Read Today's Classifieds

## MURRAY LIVESTOCK CO.

### Market Report

Sales Each Tuesday at 2:00 O'Clock

November 9, 1954

### TOTAL HEAD 1051

Long Fed Steers	\$21.00-23.25
Short Fed Steers	17.00-20.00
Medium Quality Butcher Cattle	15.00-18.00
Baby Beeves	15.00-20.00
Fat Cows, Beef Type	9.00-11.00
Canners and Cutters	2.50- 8.50
Bulls	8.00-12.00
VEALS	
Fancy Veals	23.00
No. 1 Veals	21.80
No. 2 Veals	19.80
Throwouts	4.00-16.30
HOGS	
180 to 250 pounds	19.50

## QUEEN MOTHER MEETS THE PRESS



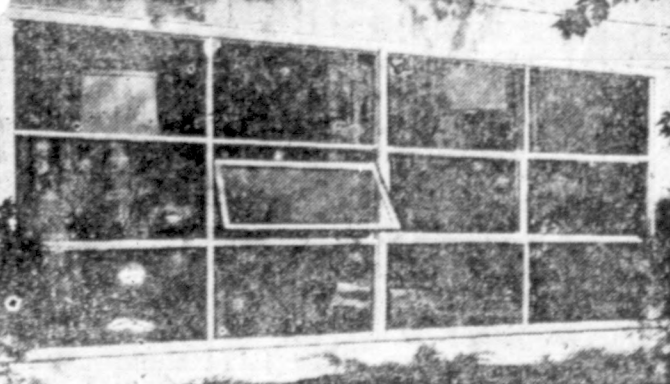
QUEEN MOTHER ELIZABETH of Great Britain is shown with women reporters around her after she addressed members of the various press clubs in Washington. She told the 1,000 Washington correspondents that "this precious freedom of communication and ideas" is "not the least of our many traditions that we share together."

## NON-STOP NEW YORK TO PARIS



VETERAN PILOT Max Conrad of San Francisco stands in front of his two-engine Piper Apache in Paris after a non-stop flight from New York. Conrad was in the air 22 hours, 19 minutes, had fuel for nearly five hours more.

## Wall Admits Sun, Scenery



A wall of windows gives an inviting look to this living room. All of the ponderosa pine sash are fixed in place, except the two center sash, which swing out for ventilation.

A wall of windows is an increasingly common sight both on new homes and on modernized older dwellings. It consists of a multiple arrangement of windows in vertical banks and horizontal rows, forming a glass "wall" that brings sunlight and scenery into the house.

Ponderosa pine stock sash can be arranged in an infinite number of ways. A popular installation consists of many fixed sash windows, with one or two awning or hopper sash for ventilation. The awning window swings out from the bottom, while the hopper swings in from the top.

A combination widely seen in areas where maximum ventilation is wanted is a wall of awning or hopper windows, with no fixed sash. Awning and hopper are really the same window, but can be installed in either position the

owner chooses. Installed vertically, this window becomes a casement. Regular casement windows can be made into a window wall by putting a number of them side by side. The sliding window, another type of ponderosa pine unit, and the familiar double-hung window also can be used.

It is generally best to install factory-made sash and frames for a wall of windows, rather than those made by small local mills or by carpenters on the job. Factory-made windows are treated with a water-repellent, preservative chemical.

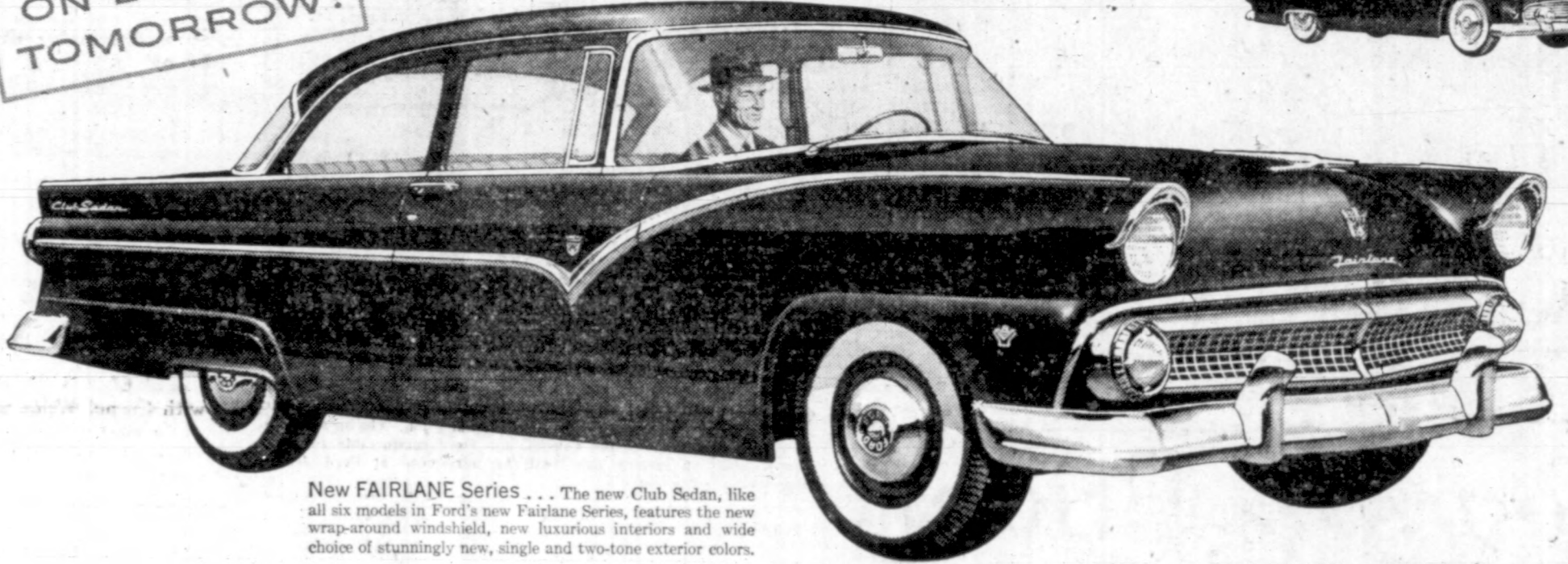
The scientifically dried lumber used in stock window units is selected for freedom from defects and is kept at the proper moisture content. Frame and sash are precision-manufactured and are glazed at the factory by experts.

The world's greatest builder of V-8's presents

# THE TOTALLY NEW '55 FORD!

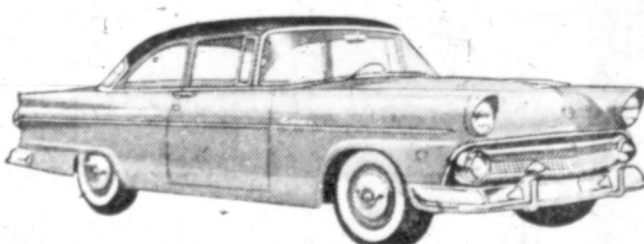
ON DISPLAY TOMORROW!

with styling inspired by the Ford THUNDERBIRD



New FAIRLANE Series . . . The new Club Sedan, like all six models in Ford's new Fairlane Series, features the new wrap-around windshield, new luxurious interiors and wide choice of stunningly new, single and two-tone exterior colors.

Longest, Lowest, Roomiest...most Powerful ever built!



New CUSTOMLINE Series . . . The Tudor Sedan (above) and Fordor offer a wide selection of exciting new color and upholstery combinations. Like all 1955 Fords, they have a new wider grille, new visored headlights and sturdier, extra-narrow pillar-posts for better visibility.



New STATION WAGON Series . . . The new 6-passenger, 4-door Country Sedan (above) is one of five new do-it-all beauties. There's also an 8-passenger Country Sedan, an 8-passenger Country Squire and a 2-door, 6-passenger Ranch Wagon and Custom Ranch Wagon.



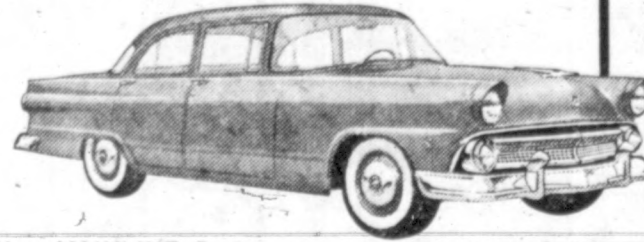
We invite you to see for yourself. And we tell you in advance you'll be amazed. This new Ford is totally new—outside, inside, and in thrillingly different performance.

The distinctive, long, low lines of the Thunderbird were its styling inspiration. Inside, you'll be greeted by rich, roomy luxury . . . by fabrics never before offered in a motorcar.

Mighty engines, mightier than in any Ford before—supply its exciting power. And each of Ford's three new engines offers you the safe, split-second response of Trigger-Torque Power.

Your ride will be up to 15% smoother. You'll find automatic driving at its most versatile, most obedient, with new Speed-Trigger Fordomatic. Best of all, you'll find your kind of car, for there are 16 body styles to choose from in four fresh new lines.

When you come in, don't be surprised if you tell yourself: why look farther—why delay—you just can't buy better than when you buy Ford.



New MAINLINE Series . . . Each of the three Mainline beauties offers the same engineering advancements, the same graceful contours and clean lines that distinguish all '55 Fords. Fordor Sedan is illustrated above.



## EXCLUSIVE TRIGGER-TORQUE POWER IN 3 MIGHTY ENGINES

1. 162-h.p. Y-block V-8
2. 182-h.p. Y-block Special V-8
3. 120-h.p. I-block Six

(1) The new 162-h.p. high-torque Y-block V-8 has a higher (7.6 to 1) compression ratio, greater displacement. And, like all '55 Ford engines, it has Ford's famous deep-block build for extra smoothness . . . short-stroke design for greater savings.

(2) The new 182-h.p. Y-block Special V-8 is offered in combination with new Speed-Trigger Fordomatic Drive on Fairlane and Station Wagon models. It features 4-barrel carburetion, dual exhausts and an extra-high (8.5 to 1) compression ratio.

(3) The new 120-h.p. I-block Six has a new higher (7.5 to 1) compression ratio, turbo-wedge combustion chambers, deep-block build. It's the most advanced six-cylinder engine in the industry.

ALL WITH TRADITIONAL FORD ECONOMY

## Plus all these other brand-new Worth-More Features

★ New Speed-Trigger Fordomatic Drive has an automatic low gear for quicker starts and better passing ability. ★ New Turbo-Action Spark Plugs resist "fouling" up to three times as long. ★ New 10% Larger Brakes mean smoother stopping and up to 50% longer brake lining life. ★ New Tubeless Tires are quieter and easier-riding, offer extra puncture and blowout protection, longer tire life. ★ New Angle-Poised Ball-Joint Front Suspension reduces "road-joint" jar.

(Fordomatic Drive optional.)

# '55 FORD

The fine car of its field

MURRAY MOTORS, Inc.

211 East Main Street

Murray, Kentucky



eds

CO.

lock

9, 1954

00-23.25

00-20.00

00-18.00

00-20.00

00-11.00

50-8.50

00-12.00

23.00

21.80

19.80

00-16.30

19.50

## NOTICE

**SPECIAL EQUIPMENT AT TURNERS IN Coldwater.** Caw grind crankshafts in all cars without removing engine. With a new gas-burner blocks repaired, cylinders rebored and rods aligned. I have the largest auto machine shop in Calloway County. You will save money by seeing me. Truman Turner in Coldwater.

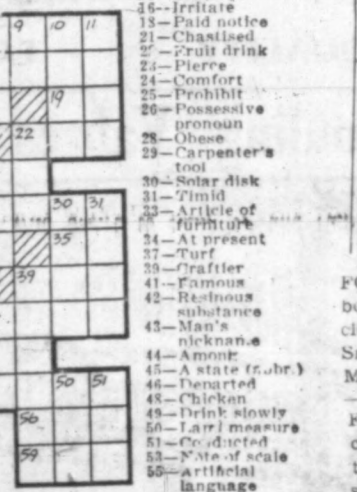
**PIANO CHRISTMAS CLUB:** \$10 will reserve the piano of your choice for delivery just before Christmas on our convenient Christmas Club Piano plan. Many famous names to choose from. Come in or write today. J. M. Turner Music Department, Union City, Tenn. Phone 1100. n11c

## CROSSWORD PUZZLE

**ACROSS**  
1—Device for carrying bricks.  
4—Mail.  
12—Collection of facts.  
13—Aroma.  
14—Jamaican ship.  
15—Death.  
16—Concerning.  
17—Gift with letter.  
18—Egg.  
19—Mature.  
20—Search for.  
21—Wager.  
22—Curious fish.  
23—Santana.  
24—Instant.  
25—Vapor.  
26—White.  
27—Fruit (pl.).  
28—Symbol for chlorine.  
29—Assail.



**DOWN**  
2—Hunt.  
3—Hypothetical.  
5—Recruit.  
6—Part of chain.  
7—Cushion.  
8—Good container.  
9—Female (col.).  
10—Printer's measure.  
11—Headgear.  
12—Informal party.  
13—You.  
14—Ireland.  
15—Before.  
16—Paradise.  
17—Information.  
18—Instant.  
19—Cinnamon.  
20—DOWN.  
21—Fruit (pl.).  
22—Symbol for chlorine.  
23—Assail.



## FOR SALE

**FOR SALE: CHILD'S COAT, SIZE 5, with cap, Muff & Leggings to match. NILE ROCKER for small child. Phone 888 W or 52 to 1829 Miller ave. o1ip**

**FOR SALE: 1951 CHEVROLET pickup, Deluxe Cab in good condition. Extremely nice. Would trade for car. Phone 1114 n1c**

**FOR SALE: NICE THREE BEDROOM house on Sycamore St. A bargain if sold at once. Call Murray Land Company, 1092 W. C. Hayes. a1ic**

**FOR SALE: PIANO, BALDWIN Grand. Excellent condition. Mahogany finish. See at 20' N. 16th at 5:00 p.m. or Sunday. n13p**

## SERVICES OFFERED

**WILL PAY REASONABLE ROOM and board for elderly woman convalescent. Not bed-ridden. Call 1321-W or 1340. n1ic**

**INSURANCE: FIRE, TRIP, AUTO, mobile, Life, Income, Hospitalization, Police. Galloway Insurance Agency, West side Court Sq., Murray, Ky. Phone 1082 or 151-M. n12p**

**DID YOU EVER GET A DOLLAR back on your fire insurance premium? We are paying back 20% (current dividend) on residential property. 303 Main Street, Phone 842, August F. Wilson, Agent. n1c**

**MAKE EXTRA MONEY. Address, Mail postcards special time each week. DICO, 143 Belmont, Belmont, Mass. o2c**

## FOR RENT

**FOR RENT: A NEW MODERN 2 bedroom house. Electric heat, 9 closets. Built-in, utility room. Small family desired. 1808 W. Main, White House (Glen). n1ip**

**FOR RENT: SLEEPING ROOM comfortably furnished. Private entrance and bath. One block from square. 208 South 8th Street. n1ip**

## Well Protected

**Huntz Hall is safe from jungle dangers as Laurette Luez runs interference in "Jungle Gents," new Allied Artists Bowery Boys comedy, opening tomorrow thru Saturday at the Varsity Theatre.**

**Not everybody in Calloway county subscribes to The Ledger & Times but nearly everybody reads it.**

**55 Drive-In**

**THURSDAY ONLY "TOP BANANA" starring Phil Silvers and Rose Marie PLUS "PRINCE OF PIRATES" in Technicolor with John Derek and Barbara Ruh**

**FRIDAY AND SATURDAY "TREASURE OF THE GOLDEN CONDOR" with Cornel Wilde and Constance Smith**

**Open week ends only from this date onward.**

**55 DE SOTO ON DISPLAY WED., NOW 17**

**55 DE SOTO ON DISPLAY WED., NOW 17**

**55 DE SOTO ON DISPLAY WED., NOW 17**

**55 DE SOTO ON DISPLAY WED., NOW 17**

**55 DE SOTO ON DISPLAY WED., NOW 17**

**55 DE SOTO ON DISPLAY WED., NOW 17**

**55 DE SOTO ON DISPLAY WED., NOW 17**

**55 DE SOTO ON DISPLAY WED., NOW 17**

**55 DE SOTO ON DISPLAY WED., NOW 17**

**55 DE SOTO ON DISPLAY WED., NOW 17**

**55 DE SOTO ON DISPLAY WED., NOW 17**

**55 DE SOTO ON DISPLAY WED., NOW 17**

**55 DE SOTO ON DISPLAY WED., NOW 17**

**55 DE SOTO ON DISPLAY WED., NOW 17**

**55 DE SOTO ON DISPLAY WED., NOW 17**

**55 DE SOTO ON DISPLAY WED., NOW 17**

**55 DE SOTO ON DISPLAY WED., NOW 17**

**55 DE SOTO ON DISPLAY WED., NOW 17**

**55 DE SOTO ON DISPLAY WED., NOW 17**

**55 DE SOTO ON DISPLAY WED., NOW 17**

**55 DE SOTO ON DISPLAY WED., NOW 17**

**55 DE SOTO ON DISPLAY WED., NOW 17**

**55 DE SOTO ON DISPLAY WED., NOW 17**

**55 DE SOTO ON DISPLAY WED., NOW 17**

**55 DE SOTO ON DISPLAY WED., NOW 17**

**55 DE SOTO ON DISPLAY WED., NOW 17**

**55 DE SOTO ON DISPLAY WED., NOW 17**

**55 DE SOTO ON DISPLAY WED., NOW 17**

**55 DE SOTO ON DISPLAY WED., NOW 17**

**55 DE SOTO ON DISPLAY WED., NOW 17**

**55 DE SOTO ON DISPLAY WED., NOW 17**

**55 DE SOTO ON DISPLAY WED., NOW 17**

**55 DE SOTO ON DISPLAY WED., NOW 17**

**55 DE SOTO ON DISPLAY WED., NOW 17**

## FOR SALE

**FOR SALE: CHILD'S COAT, SIZE 5, with cap, Muff & Leggings to match. NILE ROCKER for small child. Phone 888 W or 52 to 1829 Miller ave. o1ip**

**FOR SALE: 1951 CHEVROLET pickup, Deluxe Cab in good condition. Extremely nice. Would trade for car. Phone 1114 n1c**

**FOR SALE: NICE THREE BEDROOM house on Sycamore St. A bargain if sold at once. Call Murray Land Company, 1092 W. C. Hayes. a1ic**

**FOR SALE: PIANO, BALDWIN Grand. Excellent condition. Mahogany finish. See at 20' N. 16th at 5:00 p.m. or Sunday. n13p**

## SERVICES OFFERED

**WILL PAY REASONABLE ROOM and board for elderly woman convalescent. Not bed-ridden. Call 1321-W or 1340. n1ic**

**INSURANCE: FIRE, TRIP, AUTO, mobile, Life, Income, Hospitalization, Police. Galloway Insurance Agency, West side Court Sq., Murray, Ky. Phone 1082 or 151-M. n12p**

**DID YOU EVER GET A DOLLAR back on your fire insurance premium? We are paying back 20% (current dividend) on residential property. 303 Main Street, Phone 842, August F. Wilson, Agent. n1c**

**MAKE EXTRA MONEY. Address, Mail postcards special time each week. DICO, 143 Belmont, Belmont, Mass. o2c**

## FOR RENT

**FOR RENT: A NEW MODERN 2 bedroom house. Electric heat, 9 closets. Built-in, utility room. Small family desired. 1808 W. Main, White House (Glen). n1ip**

**FOR RENT: SLEEPING ROOM comfortably furnished. Private entrance and bath. One block from square. 208 South 8th Street. n1ip**

**FOR RENT: SLEEPING ROOM comfortably furnished. Private entrance and bath. One block from square. 208 South 8th Street. n1ip**

**FOR RENT: SLEEPING ROOM comfortably furnished. Private entrance and bath. One block from square. 208 South 8th Street. n1ip**

**FOR RENT: SLEEPING ROOM comfortably furnished. Private entrance and bath. One block from square. 208 South 8th Street. n1ip**

**FOR RENT: SLEEPING ROOM comfortably furnished. Private entrance and bath. One block from square. 208 South 8th Street. n1ip**

**FOR RENT: SLEEPING ROOM comfortably furnished. Private entrance and bath. One block from square. 208 South 8th Street. n1ip**

**FOR RENT: SLEEPING ROOM comfortably furnished. Private entrance and bath. One block from square. 208 South 8th Street. n1ip**

**FOR RENT: SLEEPING ROOM comfortably furnished. Private entrance and bath. One block from square. 208 South 8th Street. n1ip**

**FOR RENT: SLEEPING ROOM comfortably furnished. Private entrance and bath. One block from square. 208 South 8th Street. n1ip**

**FOR RENT: SLEEPING ROOM comfortably furnished. Private entrance and bath. One block from square. 208 South 8th Street. n1ip**

**FOR RENT: SLEEPING ROOM comfortably furnished. Private entrance and bath. One block from square. 208 South 8th Street. n1ip**

**FOR RENT: SLEEPING ROOM comfortably furnished. Private entrance and bath. One block from square. 208 South 8th Street. n1ip**

**FOR RENT: SLEEPING ROOM comfortably furnished. Private entrance and bath. One block from square. 208 South 8th Street. n1ip**

**FOR RENT: SLEEPING ROOM comfortably furnished. Private entrance and bath. One block from square. 208 South 8th Street. n1ip**

**FOR RENT: SLEEPING ROOM comfortably furnished. Private entrance and bath. One block from square. 208 South 8th Street. n1ip**

**FOR RENT: SLEEPING ROOM comfortably furnished. Private entrance and bath. One block from square. 208 South 8th Street. n1ip**

**FOR RENT: SLEEPING ROOM comfortably furnished. Private entrance and bath. One block from square. 208 South 8th Street. n1ip**

**FOR RENT: SLEEPING ROOM comfortably furnished. Private entrance and bath. One block from square. 208 South 8th Street. n1ip**

**FOR RENT: SLEEPING ROOM comfortably furnished. Private entrance and bath. One block from square. 208 South 8th Street. n1ip**

**FOR RENT: SLEEPING ROOM comfortably furnished. Private entrance and bath. One block from square. 208 South 8th Street. n1ip**

**FOR RENT: SLEEPING ROOM comfortably furnished. Private entrance and bath. One block from square. 208 South 8th Street. n1ip**

**FOR RENT: SLEEPING ROOM comfortably furnished. Private entrance and bath. One block from square. 208 South 8th Street. n1ip**

**FOR RENT: SLEEPING ROOM comfortably furnished. Private entrance and bath. One block from square. 208 South 8th Street. n1ip**

**FOR RENT: SLEEPING ROOM comfortably furnished. Private entrance and bath. One block from square. 208 South 8th Street. n1ip**

**FOR RENT: SLEEPING ROOM comfortably furnished. Private entrance and bath. One block from square. 208 South 8th Street. n1ip**

**FOR RENT: SLEEPING ROOM comfortably furnished. Private entrance and bath. One block from square. 208 South 8th Street. n1ip**

**FOR RENT: SLEEPING ROOM comfortably furnished. Private entrance and bath. One block from square. 208 South 8th Street. n1ip**

**FOR RENT: SLEEPING ROOM comfortably furnished. Private entrance and bath. One block from square. 208 South 8th Street. n1ip**

**FOR RENT: SLEEPING ROOM comfortably furnished. Private entrance and bath. One block from square. 208 South 8th Street. n1ip**

**FOR RENT: SLEEPING ROOM comfortably furnished. Private entrance and bath. One block from square. 208 South 8th Street. n1ip**

## FOR SALE

**FOR SALE: CHILD'S COAT, SIZE 5, with cap, Muff & Leggings to match. NILE ROCKER for small child. Phone 888 W or 52 to 1829 Miller ave. o1ip**

**FOR SALE: 1951 CHEVROLET pickup, Deluxe Cab in good condition. Extremely nice. Would trade for car. Phone 1114 n1c**

**FOR SALE: NICE THREE BEDROOM house on Sycamore St. A bargain if sold at once. Call Murray Land Company, 1092 W. C. Hayes. a1ic**

**FOR SALE: PIANO, BALDWIN Grand. Excellent condition. Mahogany finish. See at 20' N. 16th at 5:00 p.m. or Sunday. n13p**

## SERVICES OFFERED

**WILL PAY REASONABLE ROOM and board for elderly woman convalescent. Not bed-ridden. Call 1321-W or 1340. n1ic**

**INSURANCE: FIRE, TRIP, AUTO, mobile, Life, Income, Hospitalization, Police. Galloway Insurance Agency, West side Court Sq., Murray, Ky. Phone 1082 or 151-M. n12p**

**DID YOU EVER GET A DOLLAR back on your fire insurance premium? We are paying back 20% (current dividend) on residential property. 303 Main Street, Phone 842, August F. Wilson, Agent. n1c**

**MAKE EXTRA MONEY. Address, Mail postcards special time each week. DICO, 143 Belmont, Belmont, Mass. o2c**

## FOR RENT

**FOR RENT: A NEW MODERN 2 bedroom house. Electric heat, 9 closets. Built-in, utility room. Small family desired. 1808 W. Main, White House (Glen). n1ip**

**FOR RENT: SLEEPING ROOM comfortably furnished. Private entrance and bath. One block from square. 208 South 8th Street. n1ip**

**FOR RENT: SLEEPING ROOM comfortably furnished. Private entrance and bath. One block from square. 208 South 8th Street. n1ip**

**FOR RENT: SLEEPING ROOM comfortably furnished. Private entrance and bath. One block from square. 208 South 8th Street. n1ip**

**FOR RENT: SLEEPING ROOM comfortably furnished. Private entrance and bath. One block from square. 208 South 8th Street. n1ip**

**FOR RENT: SLEEPING ROOM comfortably furnished. Private entrance and bath. One block from square. 208 South 8th Street. n1ip**

**FOR RENT: SLEEPING ROOM comfortably furnished. Private entrance and bath. One block from square. 208 South 8th Street. n1ip**

**FOR RENT: SLEEPING ROOM comfortably furnished. Private entrance and bath. One block from square. 208 South 8th Street. n1ip**

**FOR RENT: SLEEPING ROOM comfortably furnished. Private entrance and bath. One block from square. 208 South 8th Street. n1ip**

**FOR RENT: SLEEPING ROOM comfortably furnished. Private entrance and bath. One block from square. 208 South 8th Street. n1ip**

**FOR RENT: SLEEPING ROOM comfortably furnished. Private entrance and bath. One block from square. 208 South 8th Street. n1ip**

**FOR RENT: SLEEPING ROOM comfortably furnished. Private entrance and bath. One block from square. 208 South 8th Street. n1ip**

**FOR RENT: SLEEPING ROOM comfortably furnished. Private entrance and bath. One block from square. 208 South 8th Street. n1ip**

**FOR RENT: SLEEPING ROOM comfortably furnished. Private entrance and bath. One block from square. 208 South 8th Street. n1ip**

**FOR RENT: SLEEPING ROOM comfortably furnished. Private entrance and bath. One block from square. 208 South 8th Street. n1ip**

**FOR RENT: SLEEPING ROOM comfortably furnished. Private entrance and bath. One block from square. 208 South 8th Street. n1ip**

**FOR RENT: SLEEPING ROOM comfortably furnished. Private entrance and bath. One block from square. 208 South 8th Street. n1ip**

**FOR RENT: SLEEPING ROOM comfortably furnished. Private entrance and bath. One block from square. 208 South 8th Street. n1ip**

**FOR RENT: SLEEPING ROOM comfortably furnished. Private entrance and bath. One block from square. 208 South 8th Street. n1ip**

**FOR RENT: SLEEPING ROOM comfortably furnished. Private entrance and bath. One block from square. 208 South 8th Street. n1ip**

**FOR RENT: SLEEPING ROOM comfortably furnished. Private entrance and bath. One block from square. 208 South 8th Street. n1ip**

**FOR RENT: SLEEPING ROOM comfortably furnished. Private entrance and bath. One block from square. 208 South 8th Street. n1ip**

**FOR RENT: SLEEPING ROOM comfortably furnished. Private entrance and bath. One block from square. 208 South 8th Street. n1ip**

**FOR RENT: SLEEPING ROOM comfortably furnished. Private entrance and bath. One block from square. 208 South 8th Street. n1ip**

**FOR RENT: SLEEPING ROOM comfortably furnished. Private entrance and bath. One block from square. 208 South 8th Street. n1ip**

**FOR RENT: SLEEPING ROOM comfortably furnished. Private entrance and bath. One block from square. 208 South 8th Street. n1ip**

**FOR RENT: SLEEPING ROOM comfortably furnished. Private entrance and bath. One block from square. 208 South 8th Street. n1ip**

**FOR RENT: SLEEPING ROOM comfortably furnished. Private entrance and bath. One block from square. 208 South 8th Street. n1ip**

**FOR RENT: SLEEPING ROOM comfortably furnished. Private entrance and bath. One block from square. 208 South 8th Street. n1ip**

**FOR RENT: SLEEPING ROOM comfortably furnished. Private entrance and bath. One block from square. 208 South 8th Street. n1ip**

**FOR RENT: SLEEPING ROOM comfortably furnished. Private entrance and bath. One block from square. 208 South 8th Street. n1ip**

## Five Years Ago Today

Ledger and Times File  
November 11, 1949

Mrs. Steven Edwards, 90, died early this morning at the Murray Hospital after a short illness.

Marvin L. Underwood, President of the Kentucky Bankers Association, today announced the appointment of Ray Brownfield, Agricultural Representative of the Bank of Murray, as a member of the Agricultural Committee of the Kentucky Bankers Association.

Services for George Lee, who died Tuesday following a heart attack were held yesterday at Palestine.

The cash income for farmers of Kentucky fell for the first 9 months of this year. The figure this year is more than \$20,000,000 below the figure for the corresponding period in 1948.

J. M. Turner, age 64, died yesterday afternoon following a heart attack.

## Insurance Warning Given Operators

FRANKFORT — Kentucky's truck and taxicab operators were warned today by the State Department of Motor Transportation that those found operating without proper insurance, or whose insurance has been canceled must cease operations and turn in tags and cash cards to the department.

"If the insurance is not reinstated within 30 days from the date of cancellation, the operating authority will become completely null and void and cannot be reinstated," Lyle E. White, director of the motor transportation agency's Division of Certification warned.

Meanwhile, the department has promised that renewal applications for 1955 will be furnished all operators during November in order to prevent any operating problems.

## 95 Drive-In

**THURSDAY ONLY "TOP BANANA" starring Phil Silvers and Rose Marie PLUS "PRINCE OF PIRATES" in Technicolor with John Derek and Barbara Ruh**

**FRIDAY AND SATURDAY "TREASURE OF THE GOLDEN CONDOR" with Cornel Wilde and Constance Smith**

Open week ends only from this date onward.

55 DE SOTO ON DISPLAY WED., NOW 17

55 DE SOTO ON DISPLAY WED., NOW 17

55 DE SOTO ON DISPLAY WED., NOW 17

55 DE SOTO ON DISPLAY WED., NOW 17

55 DE SOTO ON DISPLAY WED., NOW 17

55 DE SOTO ON DISPLAY WED., NOW 17

55 DE SOTO ON DISPLAY WED., NOW 17

55 DE SOTO ON DISPLAY WED., NOW 17

55 DE SOTO ON DISPLAY WED., NOW 17



## Potatoes A La Mom



Dad and your strenuous-playing, fast-growing brood announce a meal's not a meal without potatoes; and maybe you're sick of them the same old ways.

Tonight, how about concentrating your recipe prowess on the spuds and serve simply with sliced cold meat. These potato cheese croquettes fill the bill to a T for something fillingly different, go with practically anything else you have on hand, and will make the whole family wonder where you've been hiding your talents for improvising.

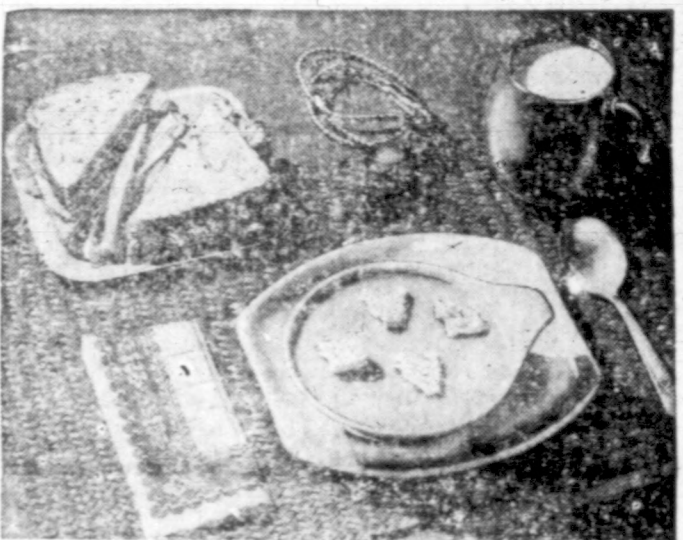
They'll sit up and take notice on taste too, when you include Ac'cent\* in the mixings. Ac'cent is the seasoning that points up subtle natural flavors, blends them together harmoniously for delectable enjoyment in the eating. Use it in all your meat and vegetable cooking for the best in good taste.

## Potato Cheese Croquettes

2 cups cold (leftover) mashed potatoes  
1 egg, beaten  
1 cup grated Cheddar cheese  
Salt to taste  
1/2 teaspoon Ac'cent\*  
1/2 cup fine dry bread crumbs  
1/2 cup milk

Break up potatoes. Beat egg in blender until frothy. Add potato pieces gradually, beating at medium speed until blended. Stir in cheese, salt and Ac'cent. Shape as desired. Dip into crumbs, then into milk, and again into crumbs. Fry in shallow hot fat until golden brown on all sides. Makes 4 to 6 servings.

\*—pure monosodium glutamate

Worth Whistling About  
Child's Lunch At Home

Tuna-Apple Sandwich, made with enriched bread, served with a hearty soup, forms the basis of the school child's lunch.

Whether mother blows the whistle for the sand-lot crowd or the noon dismissal bell releases them from school, youngsters arrive at the luncheon table starved. Their healthy appetites make it easy for mother to get a generous one-third to one-half of the day's needed food requirements into this meal.

Here is a pattern menu that earns high marks nutritionally—a hearty soup, flavor-filled sandwiches in quantity to fit appetites, fresh vegetable sticks, milk, and a cake dessert. This Tuna-Apple Sandwich, made with enriched bread, has a filling of chopped, unpeeled apples, blended with lemon juice and mayonnaise to which tuna is added.

Should mother need to be away from home at noon, freshly made sandwiches could be wrapped in moisture-vapor proof paper and stored in the refrigerator. The soup could be heated by an older child or poured from a vacuum bottle. Animal croutons, cut from bread and toasted, are mother's surprise.

## Tuna-Apple Sandwich

1/2 cup tuna, flaked  
1 cup finely chopped unpeeled apples  
1/2 tablespoon lemon juice  
2 tablespoons mayonnaise  
or salad dressing  
8 slices enriched bread  
1/4 cup butter or margarine

Combine flaked tuna, apples, lemon juice and mayonnaise or salad dressing. Butter bread. Make 4 sandwiches, using 1/2 cup filling for each sandwich.

Yield: 1 cup or filling for 4 sandwiches

Self-Propelled Pickers  
Sweep International Contest

1954 International Corn Picking Champions (left to right): first place winner Elmo M. Redding, Indiana state champion, Flora, Indiana; second place winner Richard Kraus, Wisconsin state champion, Whitewater, Wisconsin; third place winner William C. Frank, Canadian national champion, Hyde Park, Ontario. All three winners are shown on the Minneapolis-Moline Uni-Huskers they drove in the competition.

First, second, and third place winners at the 1954 International Mechanical Corn Picking contest used identical 2-row self-propelled huskers, topping all 1953 records. Nine American State Champions and the Canadian Champion competed on the 2400-acre Tracy Farms, east of Janesville, Wis.

Elmo M. Redding, 41-year-old Indiana State Champion, of Flora, Ind., won first place on his 3-year-old MM Uni-Husker with a score of 99.302 of a possible 100.

Richard Kraus, 23-year-old Wisconsin State Champion, Whitewater, Wis., placed second with 93.037. William C. Frank, Canadian Champion, Hyde Park, Ontario, took third place with 90.713. Kraus and Frank also operated 2-row MM Uni-Huskers.

All winners broke the 1953 records by wide margins. Redding topped 1953 first place by 15.4 points. Kraus scored 23.1 points higher than the 1953 second place winner, and Frank beat 1953 third place score by 22.8 points.

Scores of other State Champion contestants were: William Adams, Ellsworth, Ill., 88.31; Robert Frakes, Rushville, Mo., 83.52; Homer Conway, Marengo, Ohio, 82.91; Victor Frye, Hazelton, Iowa, 76.95; Herbert Salsbury, Atlanta, Ind., 69.77; Roy Becker, Easton, Minn., 64.58; and Herbert Ranschau, Humboldt, S. D., 59.81.

Field conditions were muddy from heavy rains, including a down-pour a few hours before the International Contest. Sun and a fair wind improved conditions for the finalists and the 50,000 guests on Saturday.

Secretary of Agriculture Ezra T. Benson addressed the crowd and presented the prizes. Sylvester J. Meyers, president of the Chicago Board of Trade, presented the trophies. General chairman of the contest was Ted Walton, Janesville, Wis.

Three Corner  
Tooth Pick  
Is Invented

By HARMAN W. NICHOLS

United Press Staff Correspondent

WASHINGTON — Did you

ever hear of a three cornered

tooth pick? The kind that would

fit the contours of the molars and

dig out the likes of partly chewed

fibers of veal and lamb chops?

OR ear corn?

Well, the other day a lawyer

friend of mine had an application

for a patent on just the sort of

thing. The applicant thought it was

brand new. So did the lawyer until

he looked into the record.

It took the lawyer a day and a

half to make the search in the patent

files, and he found that such a

thing was on the market 35 years

ago.

Point of this is that it takes a

minute of doing to make a search

through two and one-half million

things that already have been pat-

ented. Including the diaper pin and the tooth pick and the air cooled engine.

A Little Miffed

My lawyer friend is a little

miffed. He has learned that the

secretary of commerce has ap-

pointed an "advisory" committee

to consider putting machines, or

mechanical brains, or push buttons

in the patent office.

My friend howled his head off

when he heard the news.

"Heavenly days," he said, "how

in the world can a mechanical

brain make a search of all those

files with some office clerk push-

ing a button?"

My friend, who would just as

soon remain friendly with the Pa-

tent Office and its examiners be-

cause he likes to eat, asked this

question:

"Suppose you have a client who

wants to get on the market some-

thing that he thinks is new. Like

sav, a better mousetrap, it be real

silly about it. Know how many

"mouse" traps have been inven-

ted, not including muskrat traps and

rat traps and traps for other

things? They run into a consider-

able number. How is one small

boy going to push a button and

come up with the right answer to

a new spring on a trap—or a cheese that will attract a mouse where other cheeses have failed?"

Habit Of Sliding

The FBI, my friend, has a "file

on fingerprints. They can take

your curlicues on the thumb or

index finger and, if you have ever

been printed before, track you

down.

"But," he said, "if you are look-

ing for a new kind of match part,

the only thing you can do is to go

into the files of the Patent Of-

fice."

Not only that, but the files in

the mountainous stacks in the Pa-

tent Office, the lawyer said, have

a habit of sliding—one way or

the other.

"That would create a problem,"

he said. "You might be looking

for a precedent on a new kind of

match and wind up with informa-

tion about the whalebone in an

old-fashioned corset or a new er

old gimmick for fannies, the fixers

of flats."

USAF HAS 219 LIBRARIES

The Air Force Library Service

maintains for the benefit of USAF

personnel 159 main libraries in

continental limits of United States

and 60 abroad. There are 2,300,000

in the AFPS's collection.

Report Made On  
Crippled Children  
Society Donations

LEXINGTON — The annual

report of the Kentucky Society

for Crippled Children today show-

ed that Kentuckians gave a total

of \$217,914 during the fiscal year

ending Sept. 1, to aid handicapped

children and adults.

Briggs Lawson, Shelbyville, pres-

ident of the society, told a meet-

ing of volunteer workers here

even more funds will be needed

during the present fiscal year to

meet increased demands for aid

to crippled children. He said the

budget for the current fiscal

period already totals \$228,365.

The meeting of the society ends

tonight with election of officers

and a discussion of rehabilitation

by Dr. Alfred R. Shands Jr., med-

ical director of the Nemours

Foundation, Wilmington, Del. State

Superintendent of Public Instruc-

tion, Wendell Butler and some 200

members of the society will at-

tend the meeting.

Oil refining facilities in Texas

have been valued at a replacement

cost of \$2,300,000,000.

HOLLYWOOD'S PROFESSIONAL  
MOST GLAMOROUS SCHOOL

Half of Student Body Appears on Radio,  
Television, in Movies or Night Clubs

PARKER'S FOOD  
MARKET

Free Parking

South Fifth Street



HIGH QUALITY

LOW PRICES

Shop Parker's One-Stop Grocery Every Day For Outstanding Values - Ph. 1061

Maxwell House  
INSTANT COFFEE  
lrg. 6-oz. jar \$1.69

Nucoa  
MARGARINE  
one lb. 29c

Johnson's Super  
HARD GLOSS  
quart 98c

LUX TOILET SOAP  
Large Bath Size  
4 bars for 38c

SMOKED 4 to 6 Lb. Avg.  
Picnic Hams 29c  
No Charge For Slicing LB.

FRESH PORK  
BRAINS 29c lb

LARGE  
BOLOGNA Sliced or By The Piece 25c lb

HENS Young Choice Stewing or Baking 39c lb

WORTHMORE SLICED  
BACON Tray Packcd 47c lb

SUGAR CURED SMOKED  
BACON JOWLS No Charge For Slicing 25c lb

GRADE "A"  
FRYERS Cut-Up—Pan-Ready 39c lb

PURE PORK — Seasoned The Way You Like It  
SAUSAGE (Bulk) 39c lb



Florida Juicy  
ORANGES  
5-lb. bag 29c

Fancy Emperor  
GRAPES  
10c pound

Lrg. 2 1/2 Can  
Big Brother CUT GREEN BEANS 25c



2 Cans  
25c

Pure  
LARD  
50-Lb. Can  
\$8.99



39c

American Ace  
COFFEE  
1-Lb. Bag  
95c

16-Oz. Can  
Big Brother All Green LIMA BEANS 19c

5-Lb. Bag  
MARSH SEEDLESS  
GRAPEFRUIT 29c

NABISCO  
HONEY GRAHAMS 1 lb. 33c

PETER PAN  
PEANUT BUTTER 12-oz. 35c

SKINNER  
MACARONI OR  
SPAGHETTI 2 for 29c  
Diamond  
80 count  
NAPKINS

"We Grind It"  
Big Brother COFFEE 1 lb. 94c

Party Pak  
DILL  
PICKLES  
qt. 29c

Stokely's  
finest  
Crushed Pineapple  
No. 2 can 29c  
Early Party Peas  
17-oz. can 25c

Dial Soap  
Stops odor before it starts  
Bigger Bath Size 2 for 37c  
New Complexion Size 2 for 27c

GO FOR  
DINTY MOB  
BEEF STEW 45c

SUNSHINE  
KRISPY CRACKERS 1-lb. 25c  
UNDERWOOD  
DEVILED HAM 24c  
REGULAR SIZE  
SWEETHEART SOAP 4 bars 29c  
REGULAR SIZE  
WOODBURY SOAP 3 for 25c

BAGWELL'S "HOME MADE" BRAND  
HOT RELISH 12-oz. 19c  
KITCHEN CHARM  
WAXED PAPER 25c  
LINT  
LAUNDRY STARCH 15c  
BLU WHITE FLAKES 4 boxes 31c

AIR WICK 59c  
CLOVER LEAF—NON-FAT  
DRY SKIM MILK 13-oz. 29c  
BATH SIZE  
WOODBURY SOAP 4 bars 45c  
BATH SIZE  
SWEETHEART SOAP 2 bars 25c